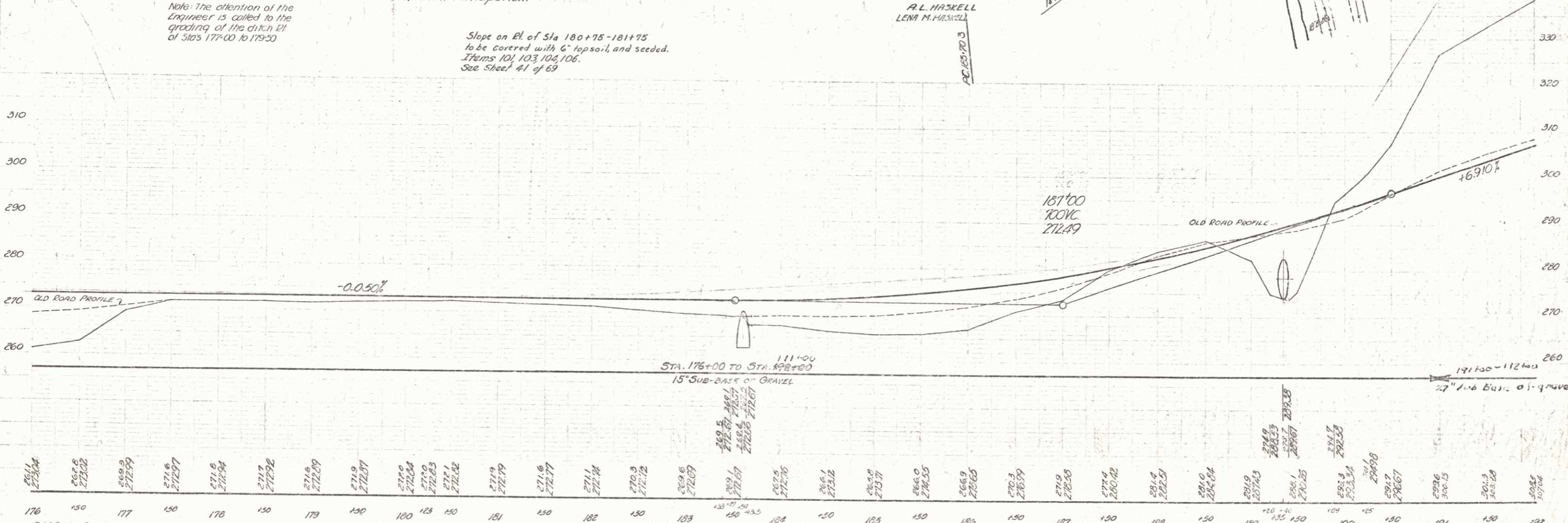
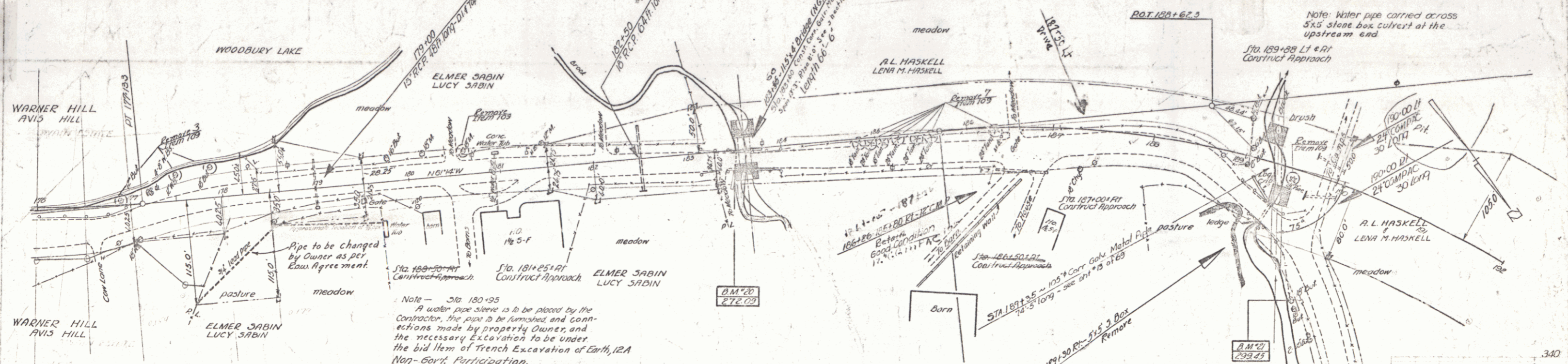


PARCEL INSTRUMENT	DATE	GRANTOR	GRANTEE	RECORDED	REMARK
C	CONDENT	12-7-44	WARNER & AVIS HILL	ST OF VT	24 98-105 12-16-44
R.C.D	CONDENT	12-7-44	ELMER & LUCY SABIN	ST OF VT	24 98-105 12-16-44
19'	W.D.O.E.	1-13-45	A.L. & LENA M. HASKELL	ST OF VT	24 114-15 1-18-45

FED. ROAD DIST. NO. 10
 DIST. NO. 10
 5 MAR 1947 8 69



WOODBURY
 S. 144 (3)
 Sheet 8 of 8 sheets

5