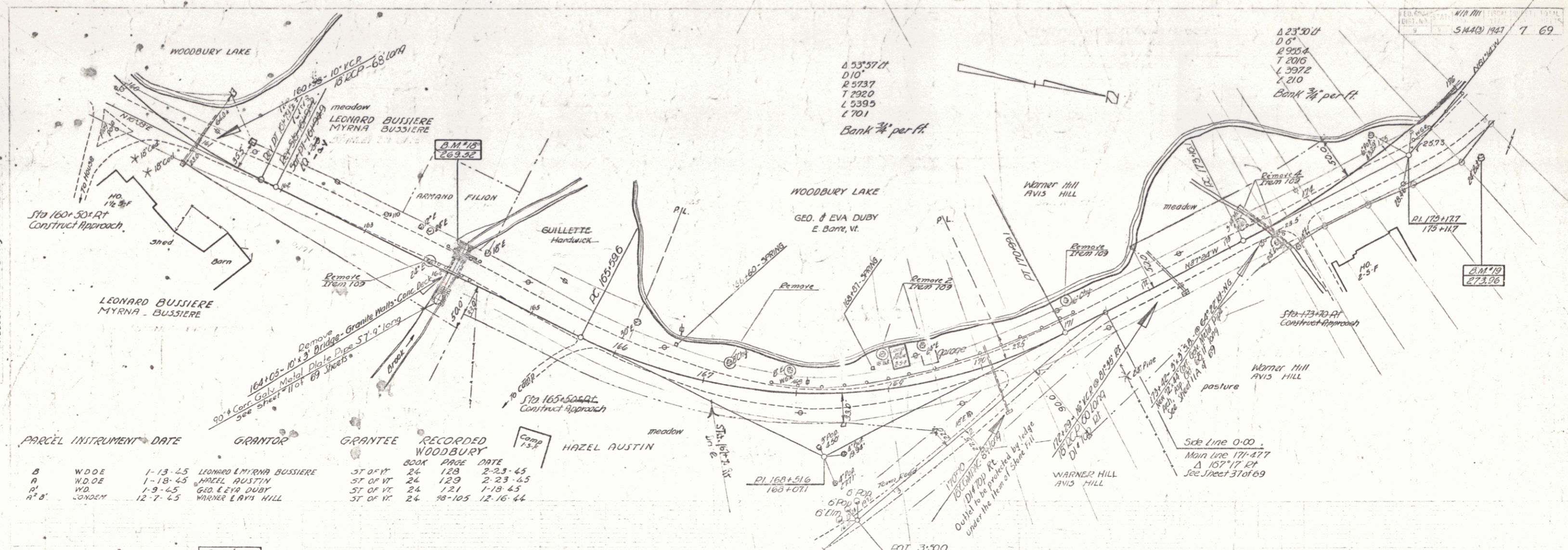
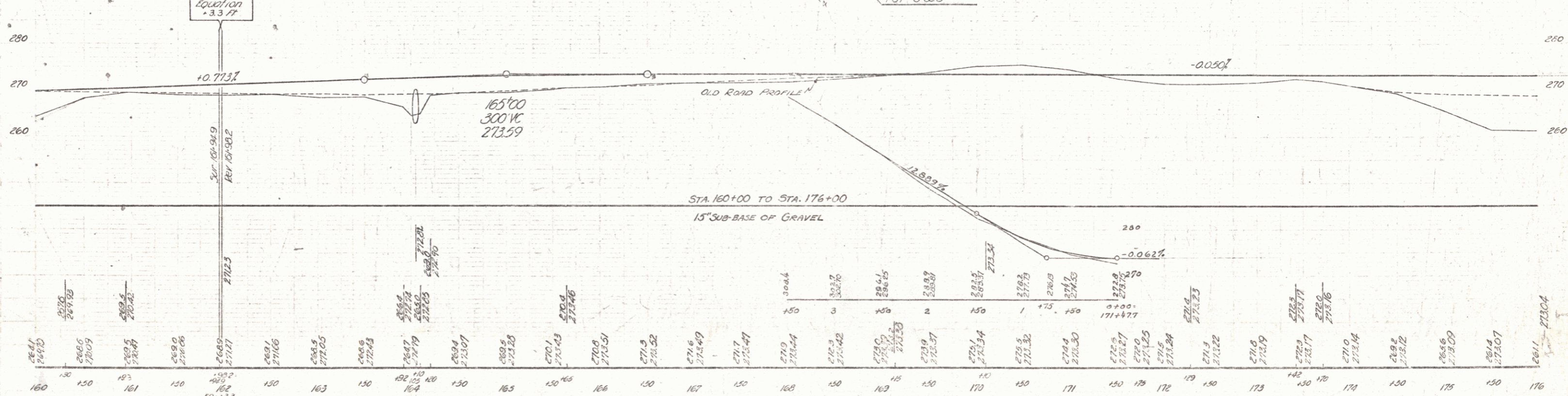


ED. P. STAN WITH THE TOTAL
 DISTANCE 5,440 1947 7 69



PARCEL	INSTRUMENT	DATE	GRANTOR	GRANTEE	RECORDED	BOOK	PAGE	DATE
B	W.D.O.E.	1-13-45	LEONARD MYRNA BUSSIÈRE	ST. OF VT.	24	129	2-23-45	
A	W.D.O.E.	1-18-45	HAZEL AUSTIN	ST. OF VT.	24	129	2-23-45	
P	W.D.	1-9-45	GEO. & EVA DUBY	ST. OF VT.	24	121	1-18-45	
H.B.	CONDEN.	12-7-45	WARNER ERVIN HILL	ST. OF VT.	24	98-105	12-16-44	



STA. 160+00 TO STA. 176+00
 15" SUB-BASE OF GRAVEL

B.M. #18 - SPOT ON CONC BRIDGE CURB - 25' LK 163+95 - ELEV 269.52
 B.M. #19 - SPIKE IN TRUNK OF 68 BUTTERNUT 71' RT 175+09 - ELEV 273.96

WOODBURY
 S. 144 (2)
 Sheet 7 of 9 sheets