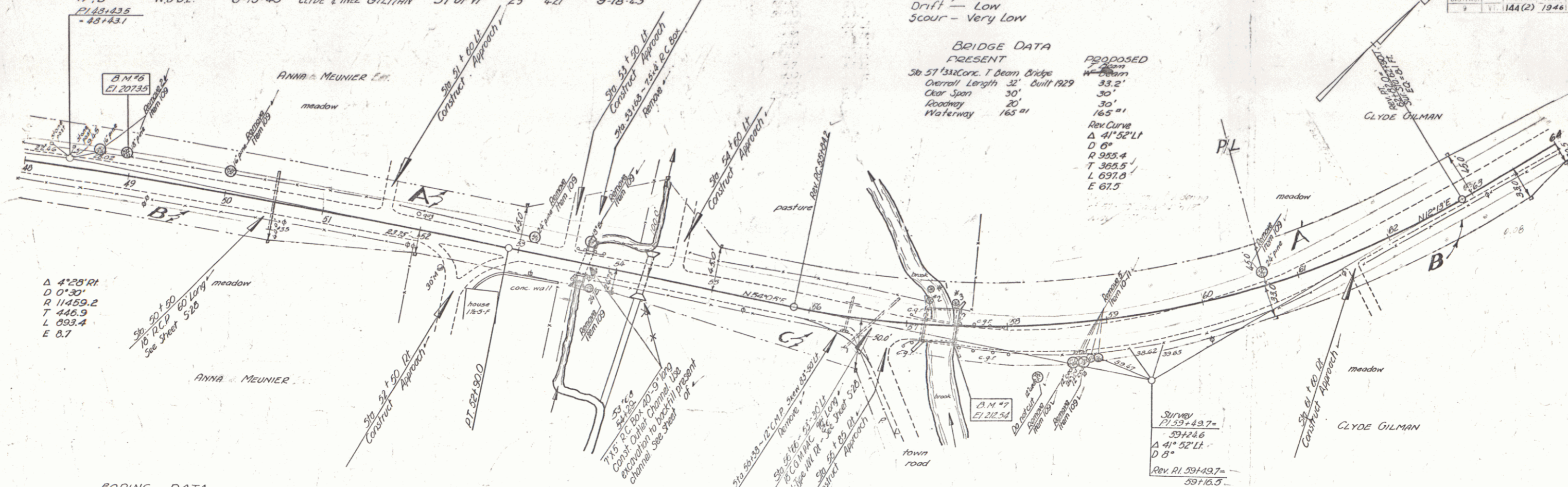


PARCEL	INSTRUMENT	DATE	GRANTOR	GRANTEE	RECORDED CALAIS	REMARKS
A, B, C	W.D.O.E.	9-15-43	ANNA MEUNIER	ST OF VT	BOOK PAGE DATE	1 COLK
A, B	W.D.O.E.	9-15-43	CLYDE L INEZ GILMAN	ST OF VT	23 421 9-18-43	

STREAM CHARACTER
 Velocity - slow
 Drift - Low
 Scour - Very Low

BRIDGE DATA	PRESENT	PROPOSED
5th 51'33" Conc. T Beam Bridge	33.2'	33.2'
Overall Length 32' Built 1929	30'	30'
Clear Span 30'	30'	30'
Roadway 165 ft	165 ft	165 ft
	R 985.4	R 985.4
	T 365.5	T 365.5
	L 697.6	L 697.6
	E 67.5	E 67.5

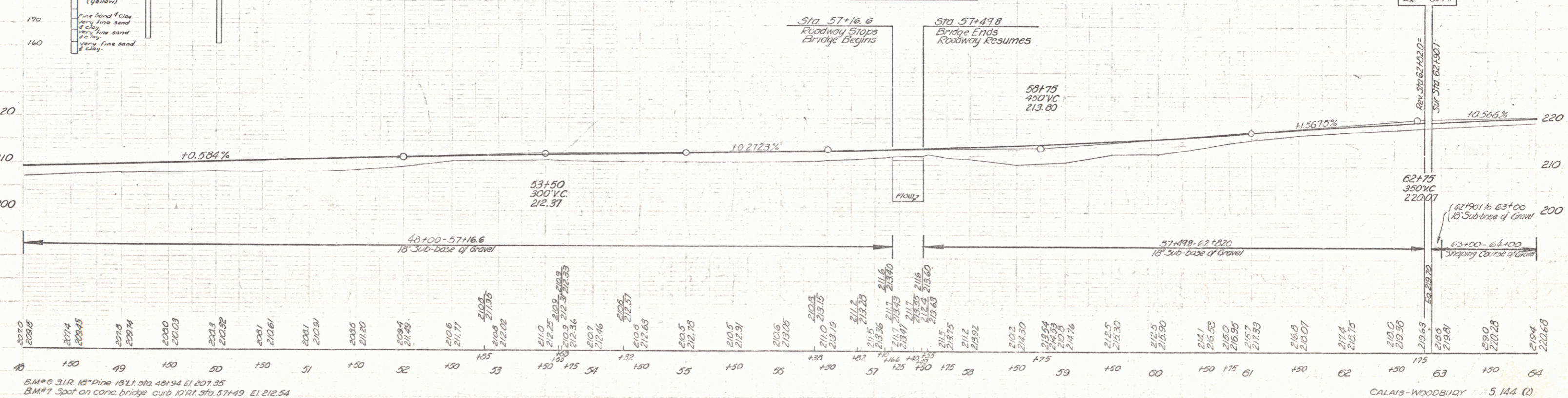
PL. ROAD STATE - 5
 DIST. AD. YEAR 1944
 144(2) 1944 9 83



BORING DATA

Station	Soil Profile
51	Coarse Gravel Medium to fine sand (grey) Fine Sand (yellow) Fine Sand & Clay Very fine sand Clay Very fine sand Clay
52	Coarse Gravel Medium Sand
53	Coarse Gravel Medium Sand

For Bridge Details
 See Sheets
 17, 18, 19 of 83



B.M. # 312 15" Pine 18" x 18" s.p. 45+94 El. 207.25
 B.M. # 7 Spot on conc. bridge curb 107 ft. s.p. 51+49 El. 212.54

CALAIS-WOODBURY 5.144 (2)
 Sheet of 83