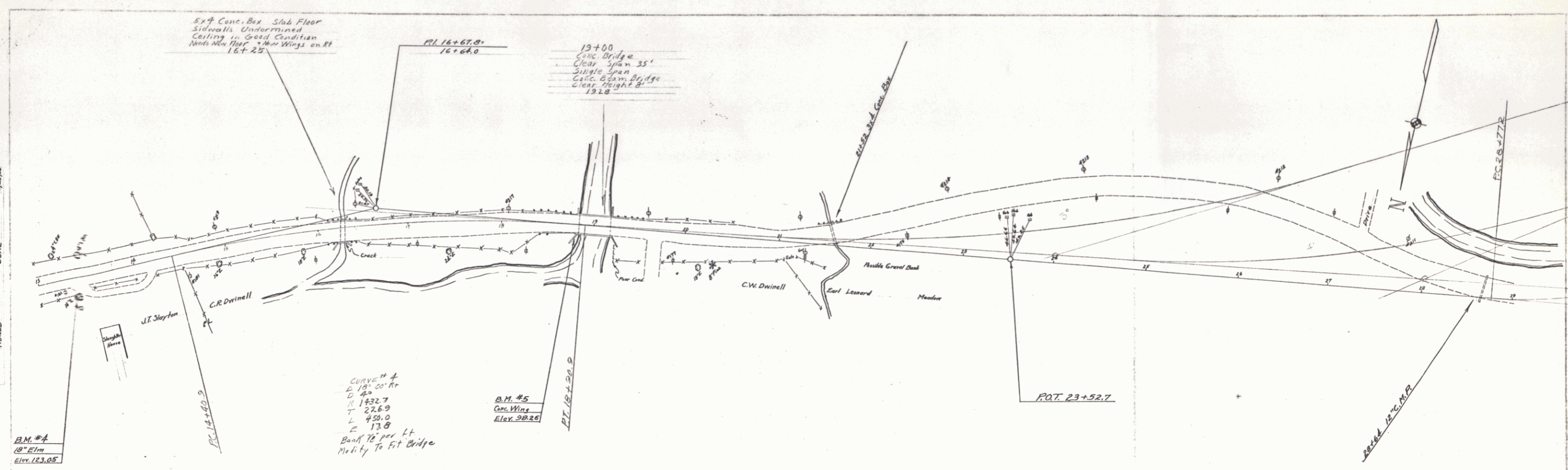
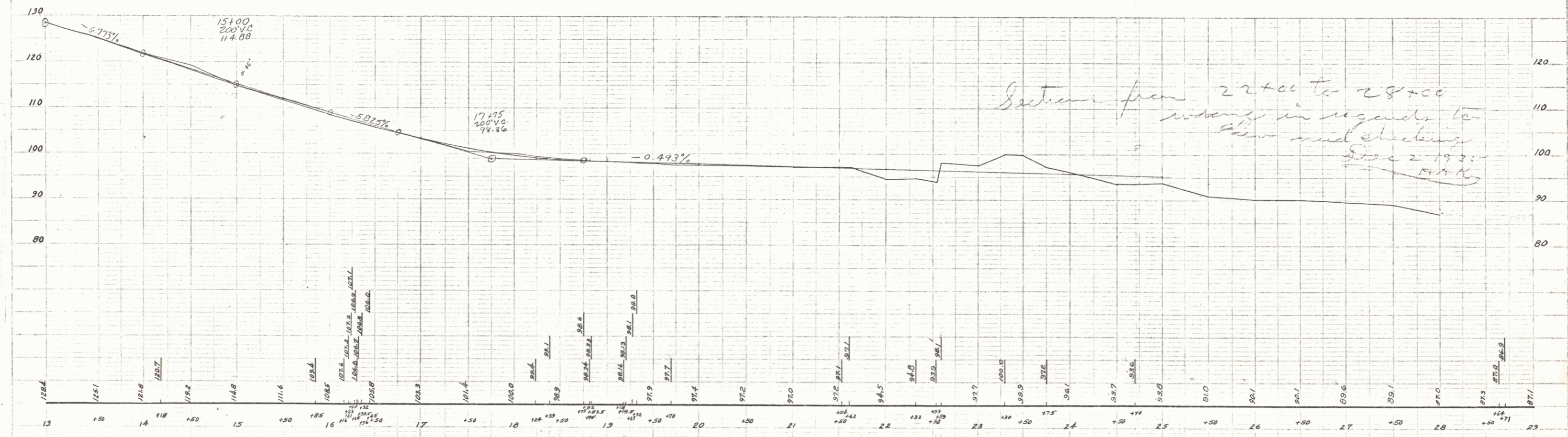


PARSONS
CORP.
CONSTRUCTION
CONCRETE
TRAINED
1/15/36



Curve # 4
D 18.00' R
L 132.7
22.69
430.0
13.8
Bank 75' per ft
Modify To Fit Bridge

B.M. #4
18" Elm
Elev. 123.05



Section from 22+00 to 28+00
shown in regard to
flow and checking
Dec 2 1935
E.H.K.

B.M. #2 SPIKE IN ROOT OF 18" ELM 18 FT. FT. OF STA. 13+25 ELEV. 123.05
B.M. #5 SPOT ON WING WALL CONC. BRIDGE 12 FT. FT. OF STA. 16+82 ELEV. 98.26

SHEET 12A

11