

| INDEX OF SHEETS | | | |
|-----------------|----------------------------|--------------------------------------|---|
| SHEET | NO. | TITLE | PAGE |
| - | 2 | TYPICAL CROSS-SECTION OF IMPROVEMENT | { Grading, Drainage, Base, Guard Rail and Double Tack Coat of Refined Tar, Item 29. |
| - | 3 | BANKING AND WIDENING TABLES | |
| - | 4-12 | PLAN AND PROFILE | |
| " | 13 | Standard Structure Sheet | S-28 Pipe Culverts |
| " | 14 | " | S-C 2-4 Box Culverts |
| " | 15 | " | SC 2-3 |
| " | 16 | " | SCW 4' |
| " | 17 | " | SCW 4x5 |
| " | 18 | " | SC 1 |
| " | 19 | " | S-30 Guard Rail |
| " | 20 | " | S-40 Barricodes, Signs & Lights |
| " | 21 | " | S-41 Typical Grading Cross Sections |
| " | 22-B4 Cross Section Sheets | | |

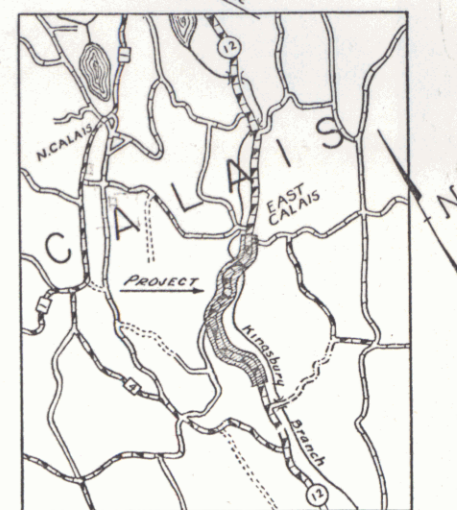
STATE OF VERMONT
STATE HIGHWAY DEPARTMENT
**PLAN AND PROFILE OF PROPOSED
STATE HIGHWAY**
STATE AID PROJECT

TOWN OF CALAIS Pin # 00R 758
ROUTE 14

MONTPELIER-HARDWICK ROAD

Project No. **ST 144P**

| FED. ROAD DIST. NO. | STATE | SECTION | FISCAL YEAR | SHEET NO. | TOTAL SHEETS |
|---------------------|-------|---------|-------------|-----------|--------------|
| 9 | VT. | 144P | 1941 | 1 | 87 |



Standard Sheets Approved by the Chief Engineer.

S-28 April 26, 1941.
S-40 Sept. 5, 1940.

BEGINNING AT A POINT 2.81± MILES NORTHERLY OF THE E. MONTPELIER TOWN LINE ON ROUTE 12, AND EXTENDING 1.760 MILES NORTHERLY TO THE VILLAGE OF EAST CALAIS.

LENGTH OF PROJECT 9294.7 FT. = 1.760 MILES.

RECORD PLANS
By - W. H. Chase

RIGHT-OF-WAY DIVISION
TOWN FILE

PERPETUAL

Town of VT 14
(To Be Returned To R.O.W. Division)

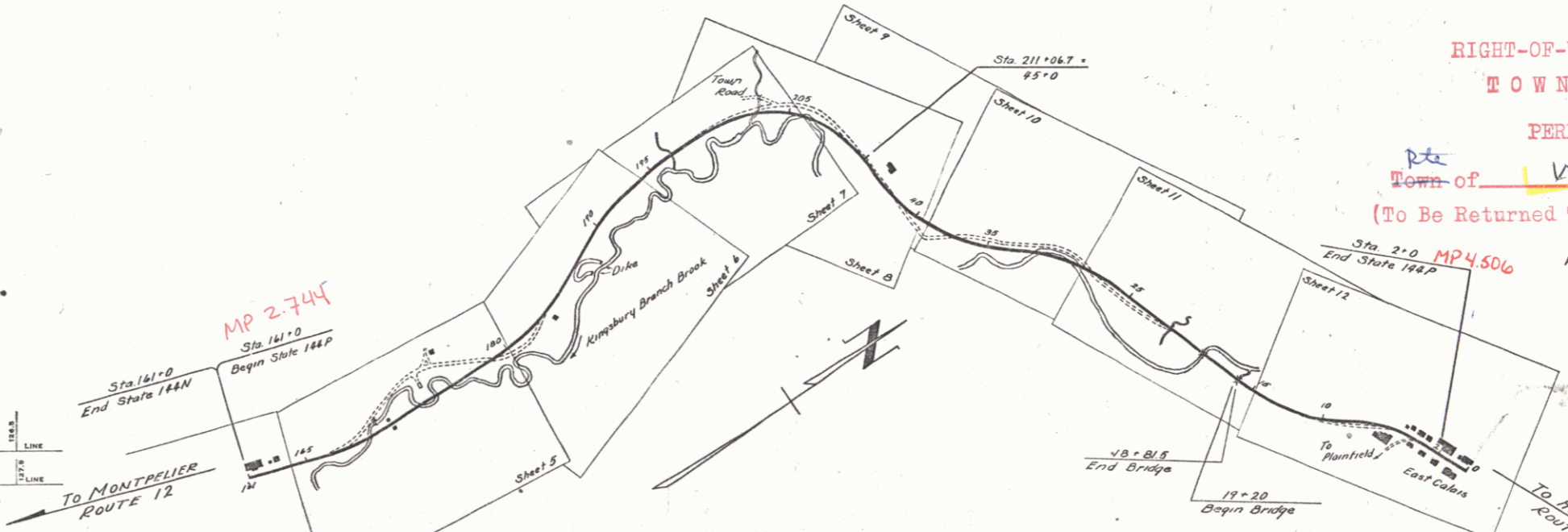
APPROVED: May 26, 1941
W. H. Chase
COMMISSIONER OF HIGHWAYS
SUBMITTED BY ORDER OF THE STATE HIGHWAY BOARD

- COUNTY LINE
- TOWN LINE
- FENCE LINE
- STONE WALL
- UNFENCED PROPERTY
- GUARD RAIL
- TRAVELED WAY
- RAILROAD
- RETAINING WALL
- CENTER LINE
- SURVEY LINE
- CULVERT
- DROP INLET
- TROLLEY POLE
- POWER POLE
- TELEPHONE POLE
- TREES
- HEDGE

- GROUND ELEVATION
- GRADE ELEVATION
- CURVE DATA
- DEFLECTION ANGLE
- DEGREE OF CURVE
- RADIUS OF CURVE
- TANGENT DISTANCE
- LENGTH OF CURVE
- EXTERNAL DISTANCE
- POINT OF INTERSECTION
- POINT OF CURVE
- POINT OF TANGENT
- POINT ON TANGENT

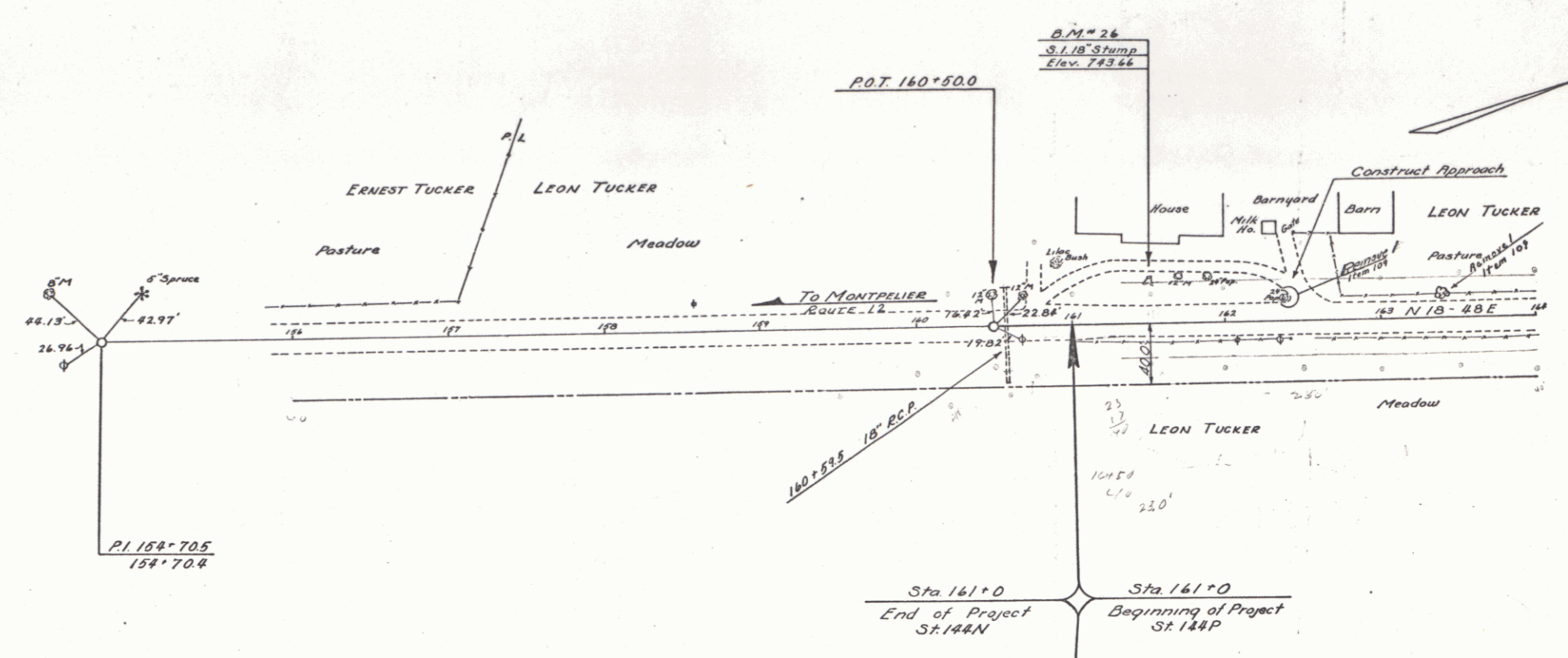
TITLE: STATE HIGHWAY DEPARTMENT
TYPICAL: 1" = 100'
PLAN: 1" = 50'
PROFILE: HORIZONTAL 1" = 50', VERTICAL 1" = 10'
CROSS SECTIONS: 1" = 5'

RECORD PLANS
CALAIS ST. 144-P
1941

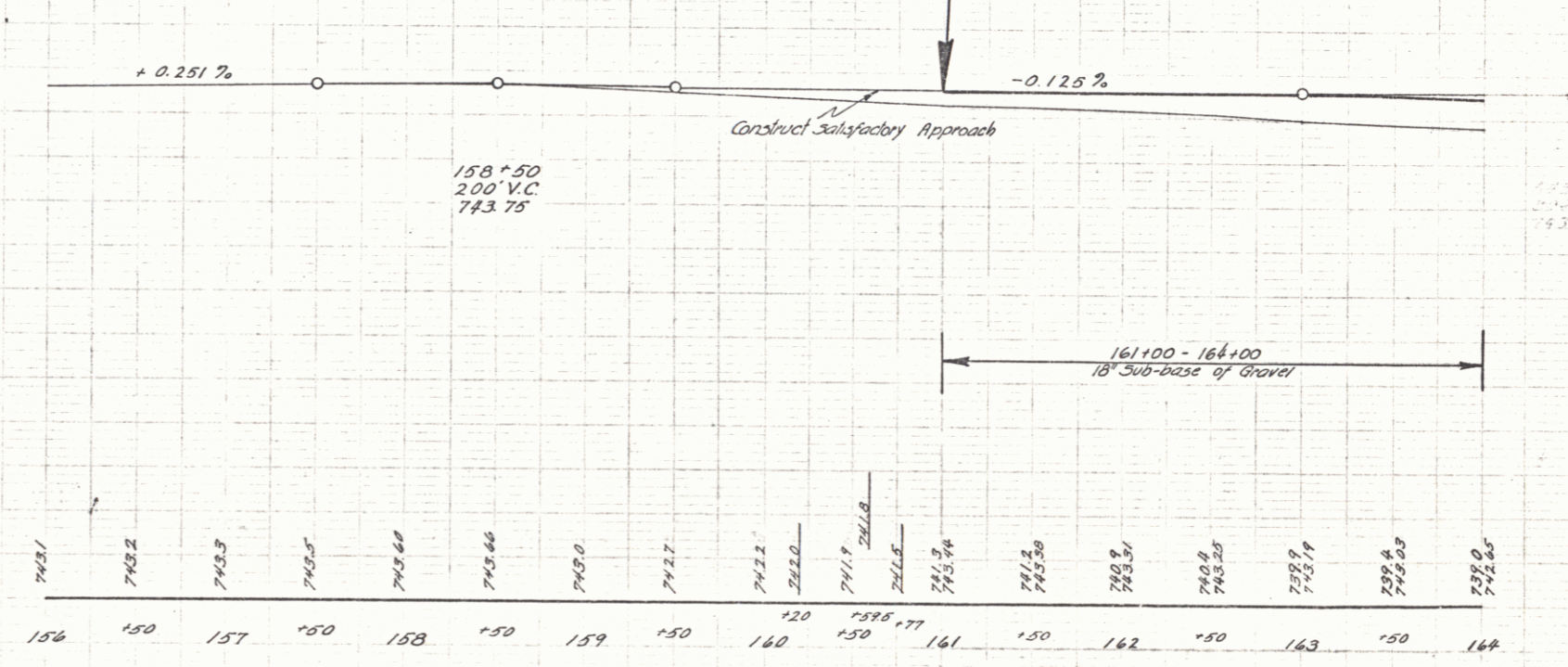


THESE PLANS ARE SUBJECT TO SUCH REVISIONS AS MAY BE REQUIRED BY THE PUBLIC ROADS ADMINISTRATION OR THE COMMISSIONER OF HIGHWAYS.
CONSTRUCTION IS TO BE CARRIED ON IN ACCORDANCE WITH THE PLANS AND THE STANDARD ROAD AND BRIDGE SPECIFICATIONS OF 1936, AS APPROVED DECEMBER 29TH, 1936 BY THE PUBLIC ROADS ADMINISTRATION, INCLUDING ALL SUBSEQUENT APPROVED REVISIONS AND SUCH REVISED SPECIFICATIONS AND SPECIAL PROVISIONS AS ARE SUBMITTED WITH THE PLANS.

APPROVED: May 26, 1941 DISTRICT ENGINEER
APPROVED: May 26, 1941 DISTRICT HIGHWAY COMMISSIONER
SERIES ST No. 144P FILED
SHEET 1 OF 87



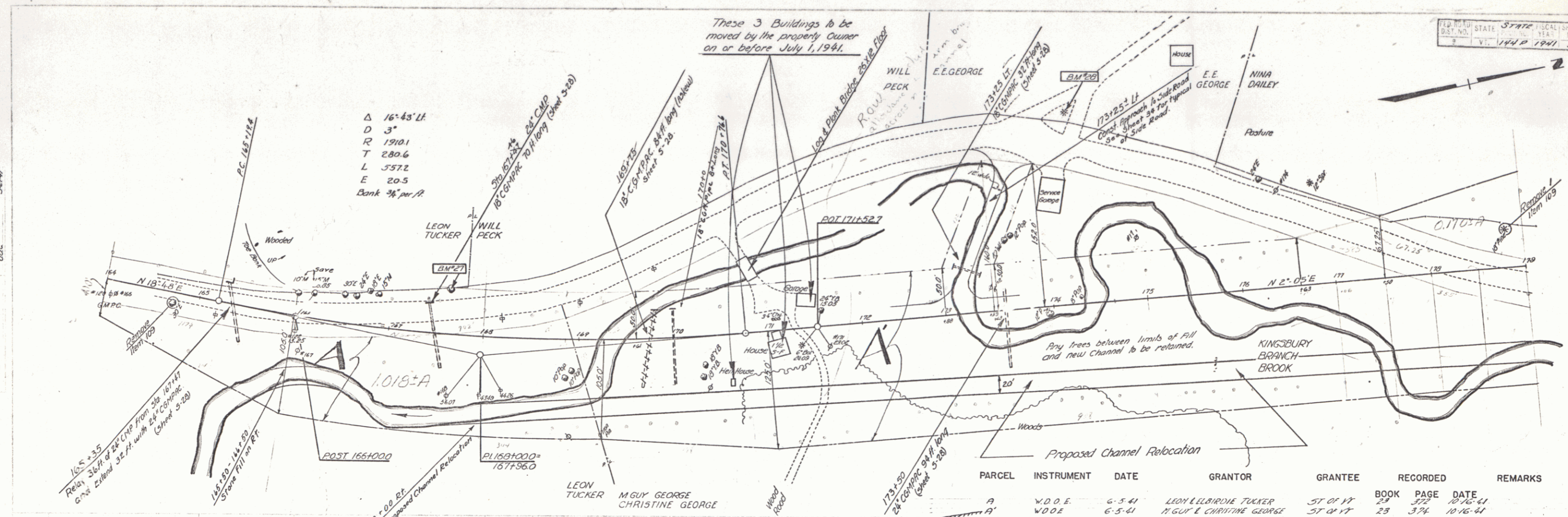
| PARCEL | INSTRUMENT | DATE | GRANTOR | GRANTEE | RECORDED BOOK | RECORDED PAGE | RECORDED DATE | REMARKS |
|--------|------------|------|---------|---------|---------------|---------------|---------------|---------|
|--------|------------|------|---------|---------|---------------|---------------|---------------|---------|



| | | | | | | | | | | | | | | | | | | | | | | | | | | | | | | | | | | | | | | | | | | | | | | | | | | | | | | | | | | | | | | | | | | | | | | | | | | | | | | |
|------|------|------|------|------|------|------|------|------|------|------|------|------|------|------|------|------|------|------|------|------|------|------|------|------|------|------|------|------|------|------|------|------|------|------|------|------|------|------|------|------|------|------|------|------|------|------|------|------|------|------|------|------|------|------|------|------|------|------|------|------|------|------|------|------|------|------|------|------|------|------|------|------|------|------|------|------|------|------|
| 7421 | 7422 | 7423 | 7425 | 7426 | 7427 | 7428 | 7429 | 7430 | 7431 | 7432 | 7433 | 7434 | 7435 | 7436 | 7437 | 7438 | 7439 | 7440 | 7441 | 7442 | 7443 | 7444 | 7445 | 7446 | 7447 | 7448 | 7449 | 7450 | 7451 | 7452 | 7453 | 7454 | 7455 | 7456 | 7457 | 7458 | 7459 | 7460 | 7461 | 7462 | 7463 | 7464 | 7465 | 7466 | 7467 | 7468 | 7469 | 7470 | 7471 | 7472 | 7473 | 7474 | 7475 | 7476 | 7477 | 7478 | 7479 | 7480 | 7481 | 7482 | 7483 | 7484 | 7485 | 7486 | 7487 | 7488 | 7489 | 7490 | 7491 | 7492 | 7493 | 7494 | 7495 | 7496 | 7497 | 7498 | 7499 | 7500 |
|------|------|------|------|------|------|------|------|------|------|------|------|------|------|------|------|------|------|------|------|------|------|------|------|------|------|------|------|------|------|------|------|------|------|------|------|------|------|------|------|------|------|------|------|------|------|------|------|------|------|------|------|------|------|------|------|------|------|------|------|------|------|------|------|------|------|------|------|------|------|------|------|------|------|------|------|------|------|------|

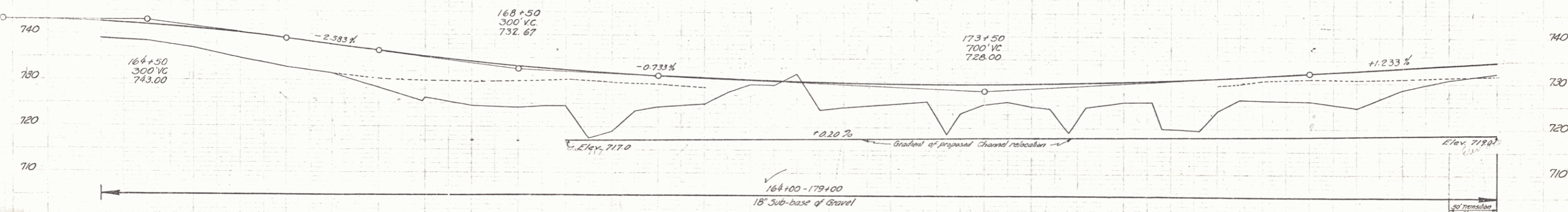
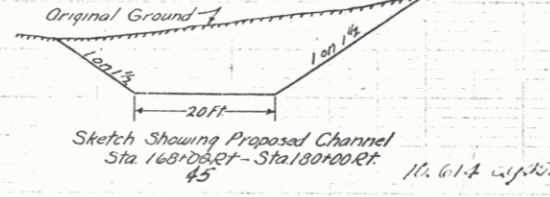
B.M. # 26 Spike in 18" Stump Sta. 161+50 - 30 Ft. Lt. Elev. 743.66

Galois
 Series ST 10, 144.P
 Sheet 4 of 84 Sheets



| PARCEL | INSTRUMENT | DATE | GRANTOR | GRANTEE | RECORDED | REMARKS |
|--------|------------|--------|----------------------------|----------|----------|---------|
| A | W.D.O.E. | 6-5-41 | LEON LELBIRDIE TUCKER | ST OF 17 | 23 | 372 |
| A | W.D.O.E. | 6-5-41 | M. GUY L. CHRISTINE GEORGE | ST OF 17 | 23 | 374 |

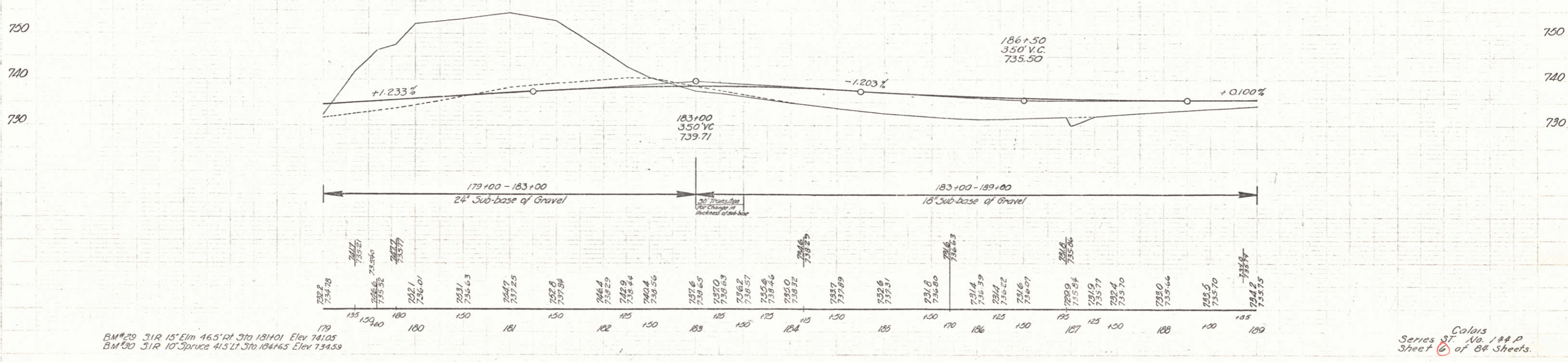
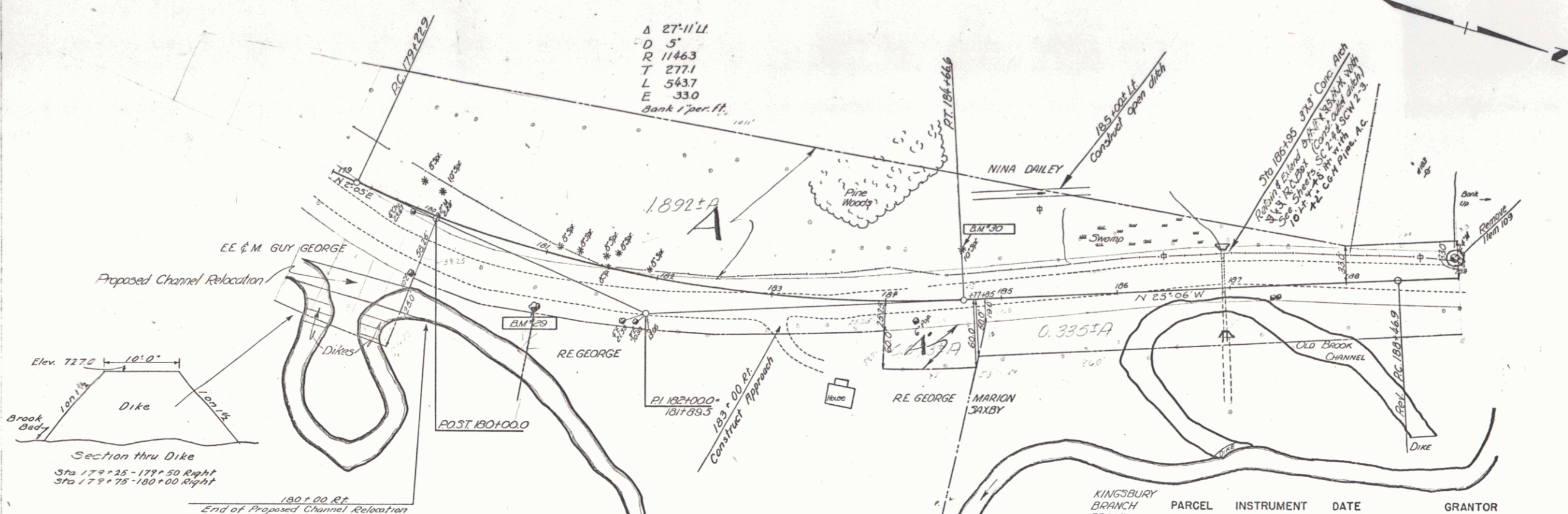
Clearing & Grubbing - Item 13
 Rt. of Sta 168+00 - Sta 180+00

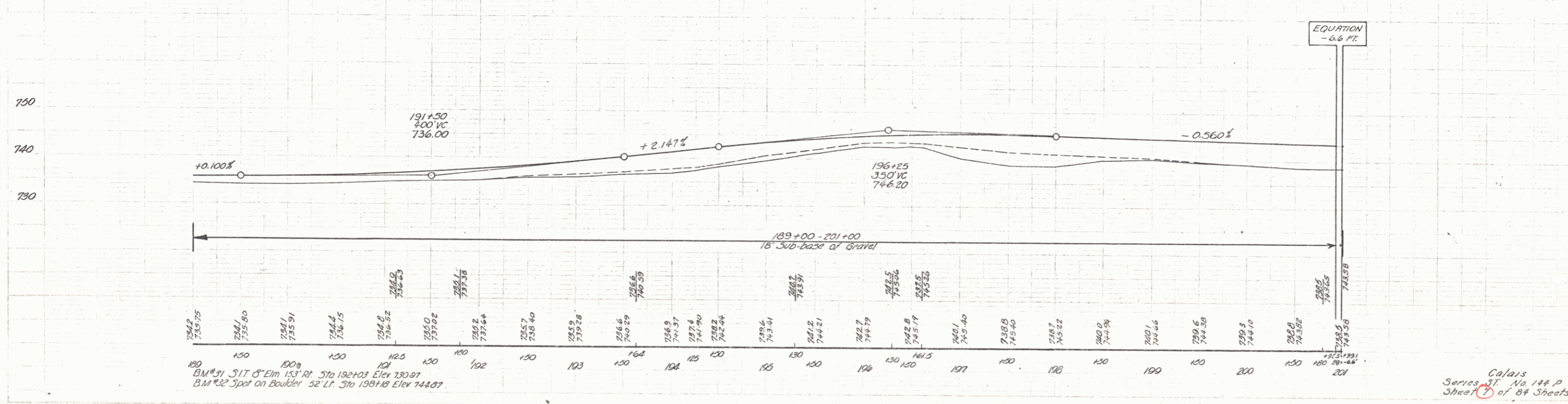
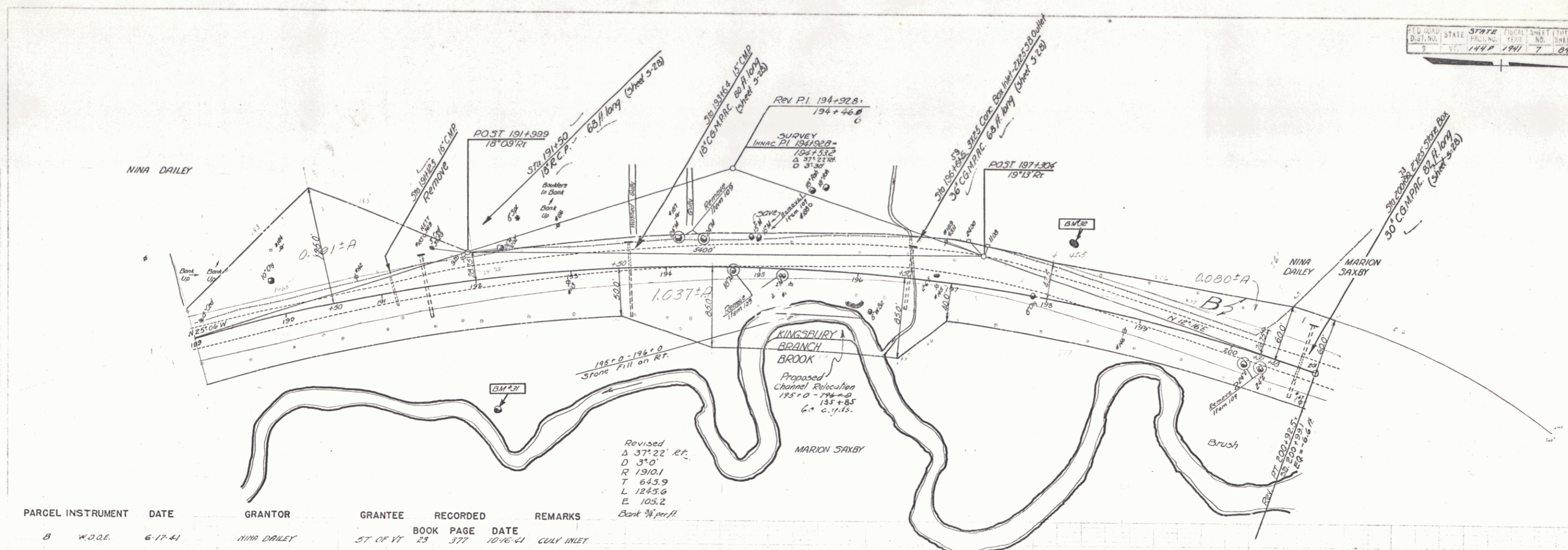


| Station | Elevation |
|---------|-----------|
| 164 | 742.45 |
| 165 | 742.08 |
| 166 | 741.30 |
| 167 | 740.52 |
| 168 | 739.75 |
| 169 | 738.97 |
| 170 | 738.20 |
| 171 | 737.42 |
| 172 | 736.65 |
| 173 | 735.87 |
| 174 | 735.10 |
| 175 | 734.32 |
| 176 | 733.55 |
| 177 | 732.77 |
| 178 | 732.00 |
| 179 | 731.22 |

BM#27 51R 15" Y.B. 43' LT. ST. 167A39 Elev. 735.50
 BM#29 51R 12" Pine 200' LT. ST. 174A29 Elev. 732.79

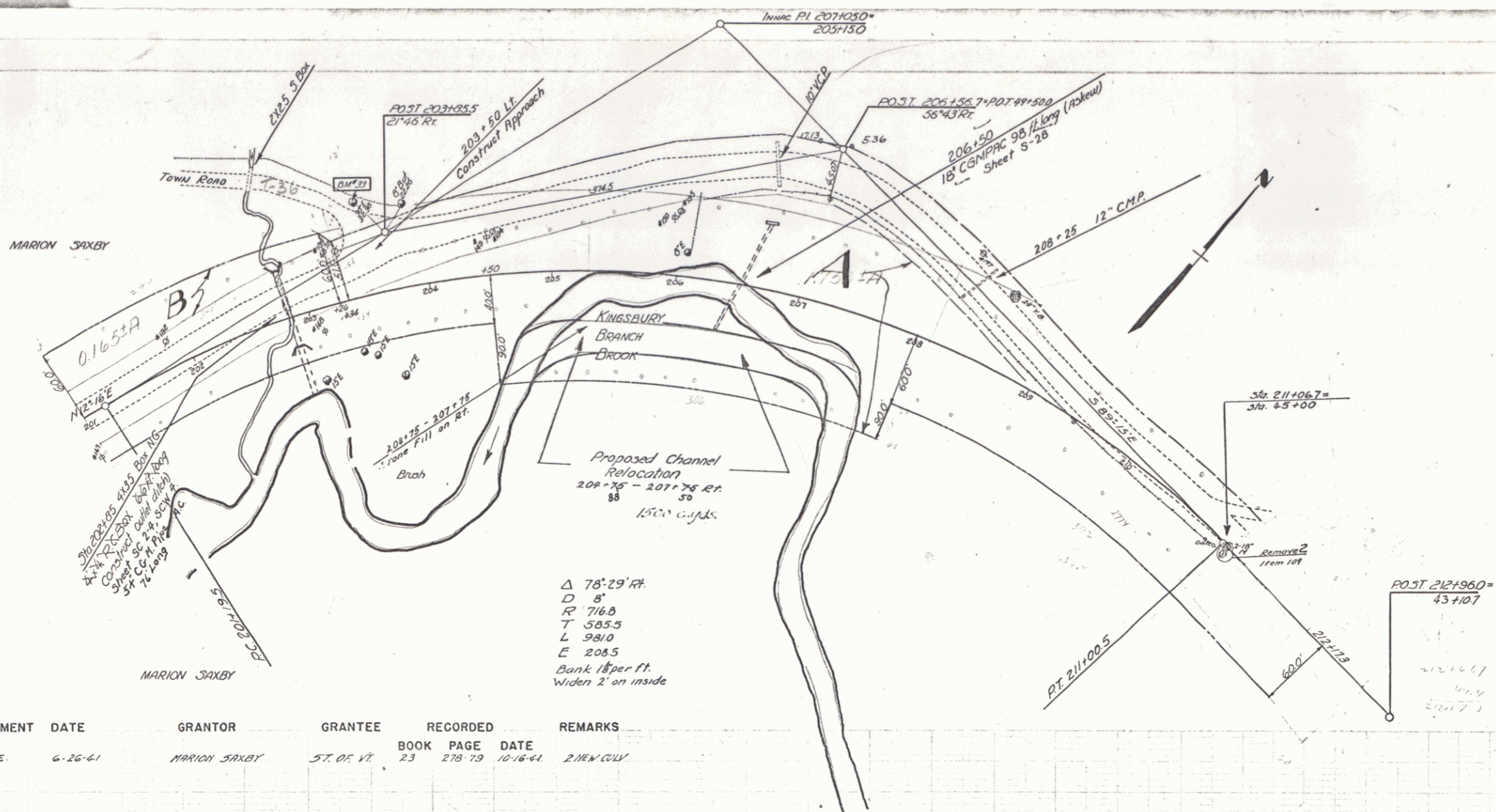
Calais
 Series ST. No. 144 P
 Sheet 5 of 84 Sheets.





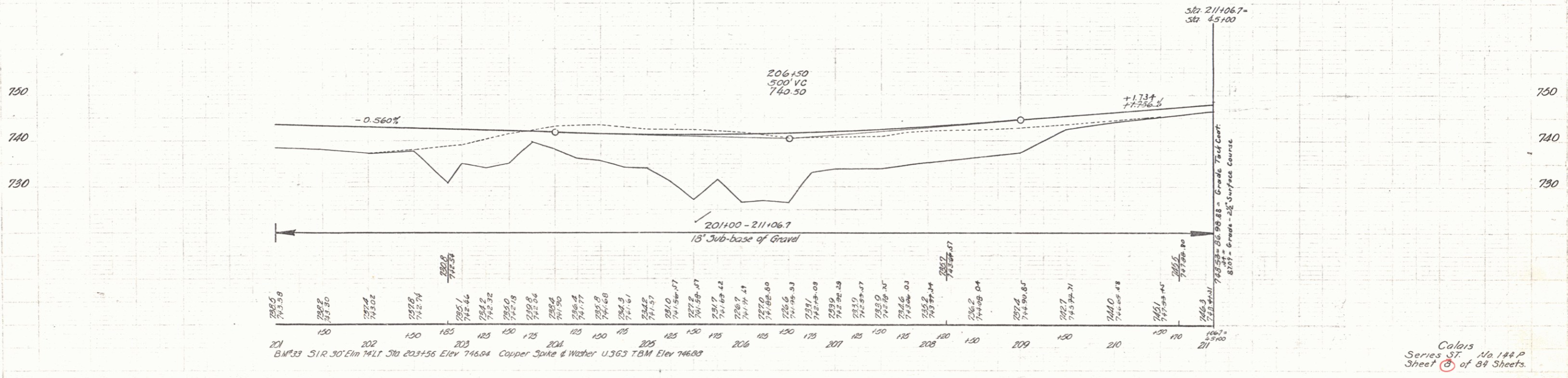
Calais
 Series ST No 144 P
 Sheet 7 of 84 Sheets.

FILE NO. 37972
 DIST. NO. 9
 SHEET NO. 84
 YEAR 1941



△ 78' 29" RT.
 D 8'
 R 716.8
 T 585.5
 L 981.0
 E 208.5
 Bank 1 1/2 per ft.
 Widen 2' on inside

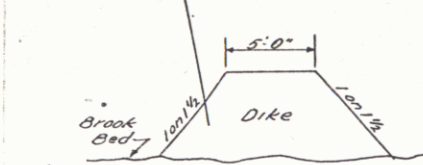
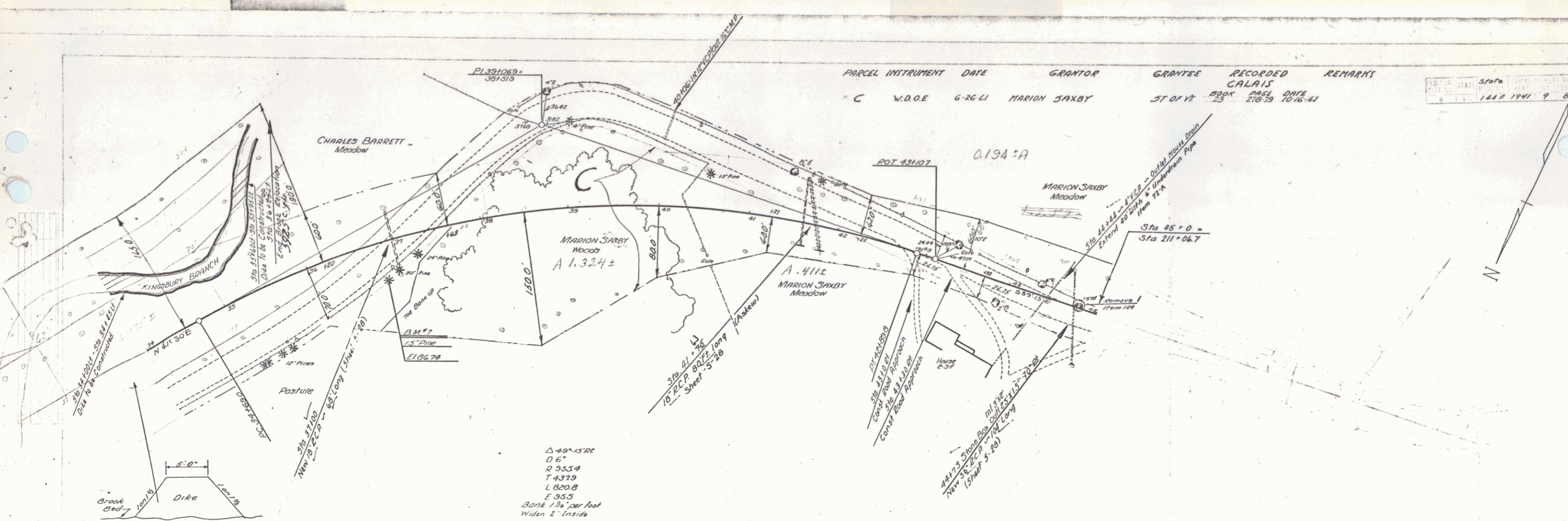
| PARCEL | INSTRUMENT | DATE | GRANTOR | GRANTEE | RECORDED | REMARKS |
|--------|------------|---------|--------------|------------|--------------------|--------------|
| | | | | | BOOK PAGE DATE | |
| A, B | W.D.O.E. | 6-26-41 | MARION SAXBY | ST. OF VT. | 23 278-79 10-16-41 | 2. NEW CULV. |



Calais
 Series 3T, No 144 P
 Sheet 84 of 84 Sheets

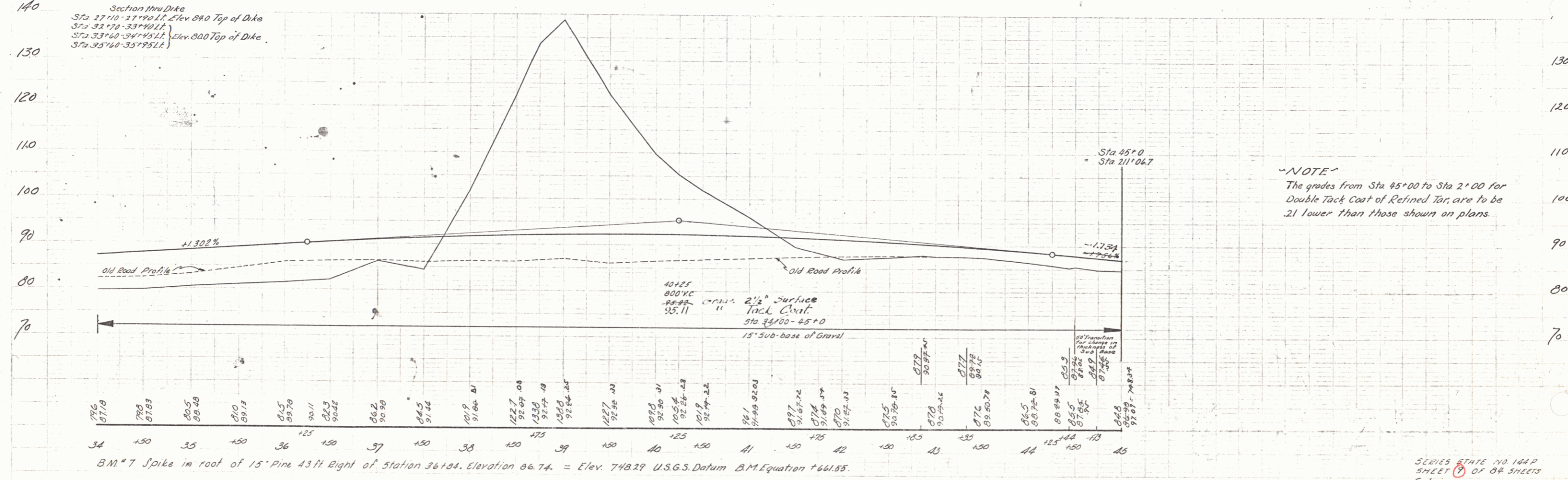
PARCEL INSTRUMENT DATE GRANTOR GRANTEE RECORDED
 C W.D.O.E 6-26-41 MARION SAXBY CALAIS
 ST OF VT BOOK PAGE DATE
 23 21879 10-16-41

Scale
 1" = 100'
 1447 1947 9 84



Section thru Dike
 Sta 27+10 - 27+90 Lt. Elev. 88.0 Top of Dike
 Sta 32+70 - 33+10 Lt. Elev. 88.0 Top of Dike
 Sta 33+00 - 34+10 Lt. Elev. 88.0 Top of Dike
 Sta 35+00 - 35+10 Lt. Elev. 88.0 Top of Dike

$\Delta 49^{\circ}15'10''$
 $D 6'$
 $R 953.4$
 $T 437.9$
 $L 820.8$
 $E 95.5$
 Bank $1\frac{1}{2}$ per foot
 Widen 2' inside

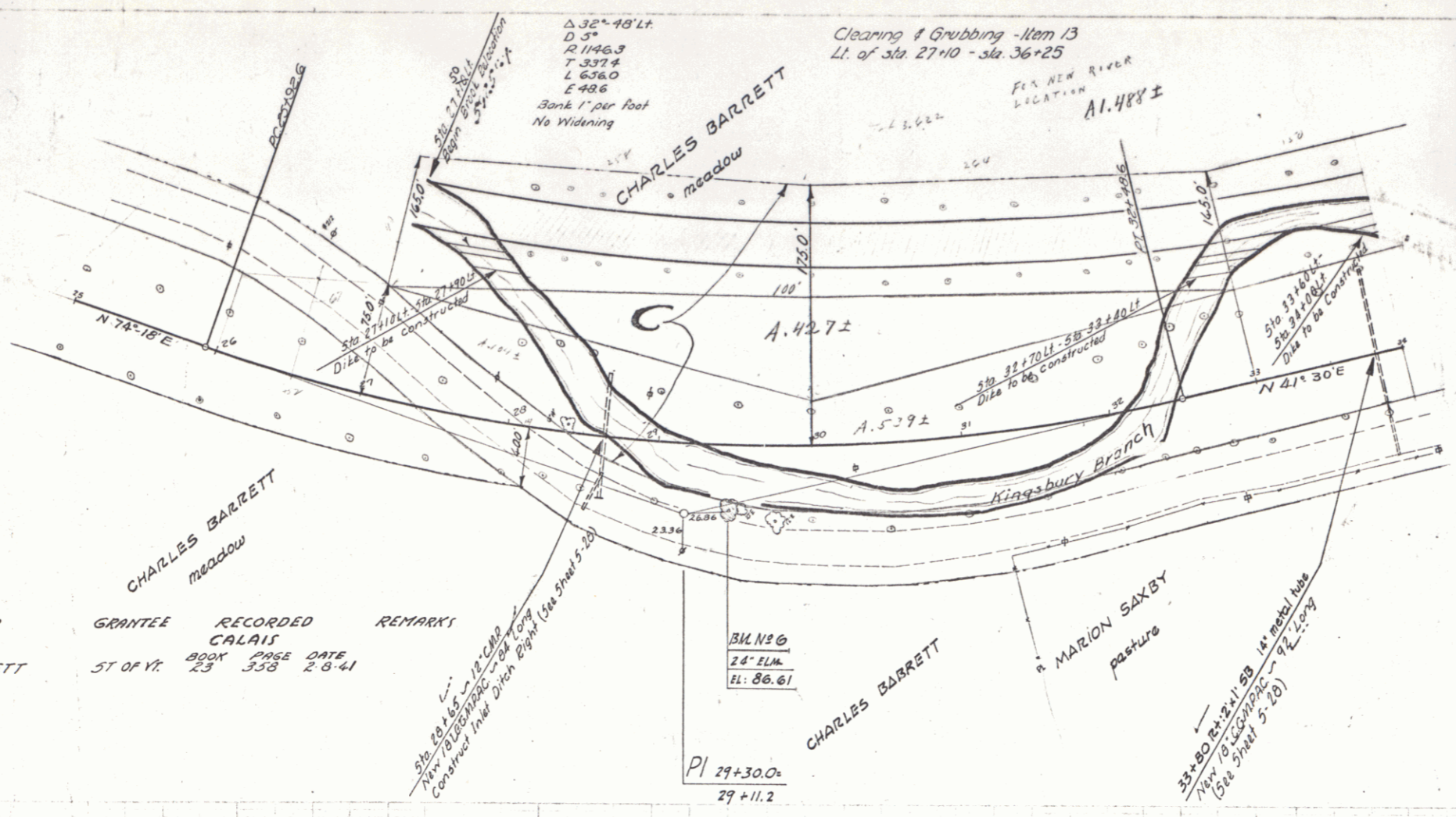


NOTE
 The grades from Sta 45+00 to Sta 2+00 for
 Double Tack Coat of Refined Tar, are to be
 .21 lower than those shown on plans.

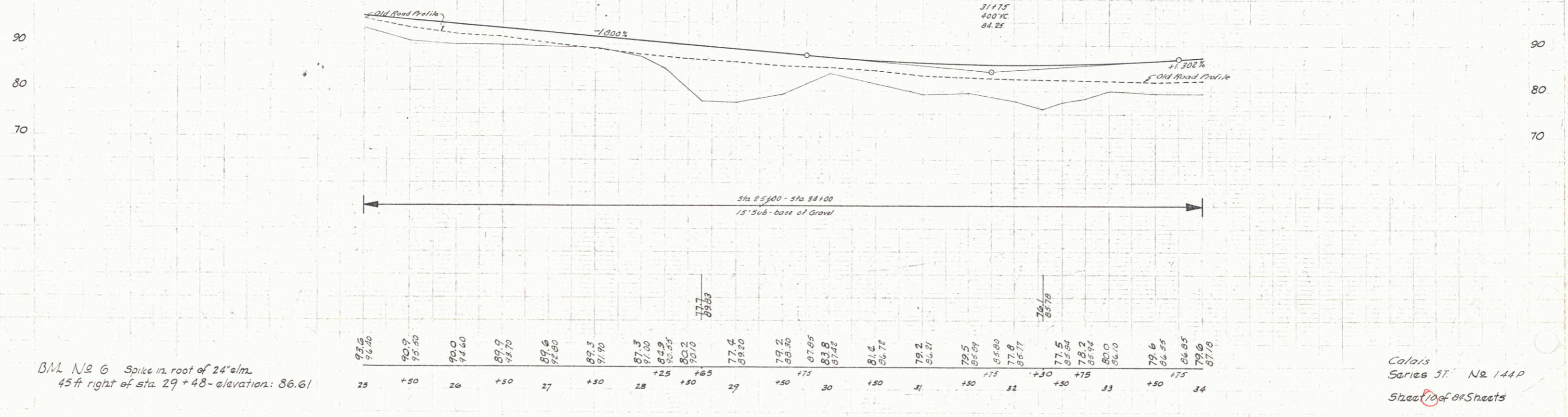
B.M. #7 Spike in root of 15' Pine 43 ft Right of Station 36+18. Elevation 86.74 = Elev. 748.29 U.S.G.S. Datum B.M. Equation +661.55.

SCALE STATE NO 104P
 SHEET 8 OF 84 SHEETS
 Calais

Scale
1" = 100'
144 P. 1941 10 84

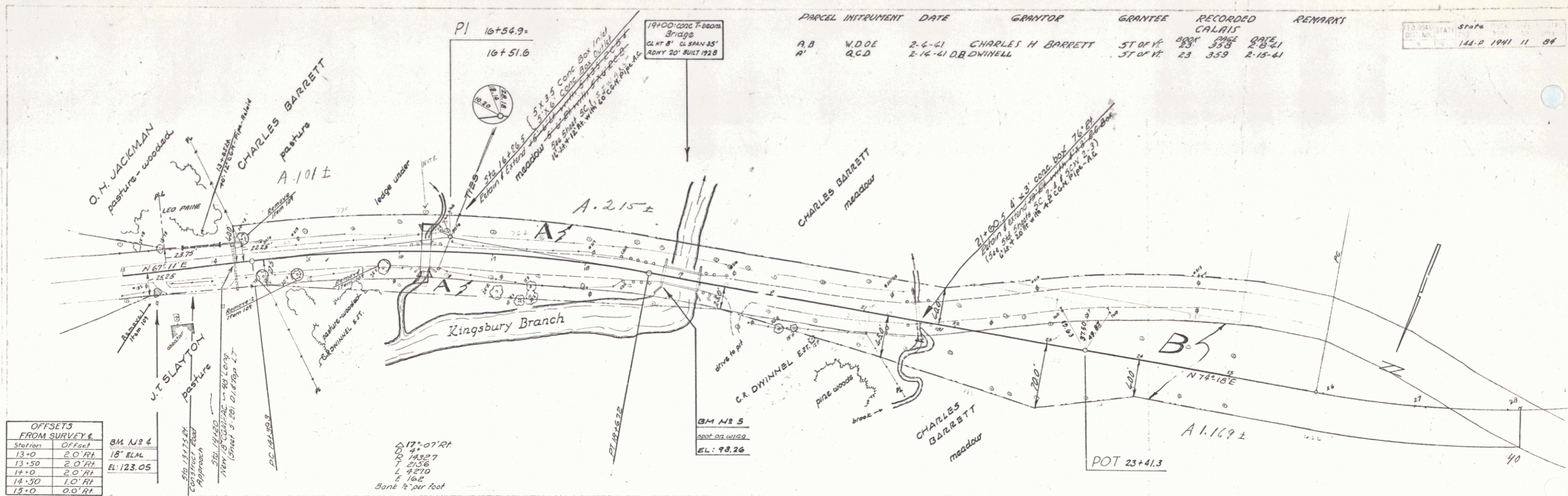


| PARCEL | INSTRUMENT | DATE | GRANTOR | GRANTEE | RECORDED | REMARKS |
|--------|------------|--------|--------------------|------------|----------|---------|
| C | W.D.O.E. | 2-4-41 | CHARLES H. BARRETT | ST. OF VT. | 23 353 | 2-8-41 |



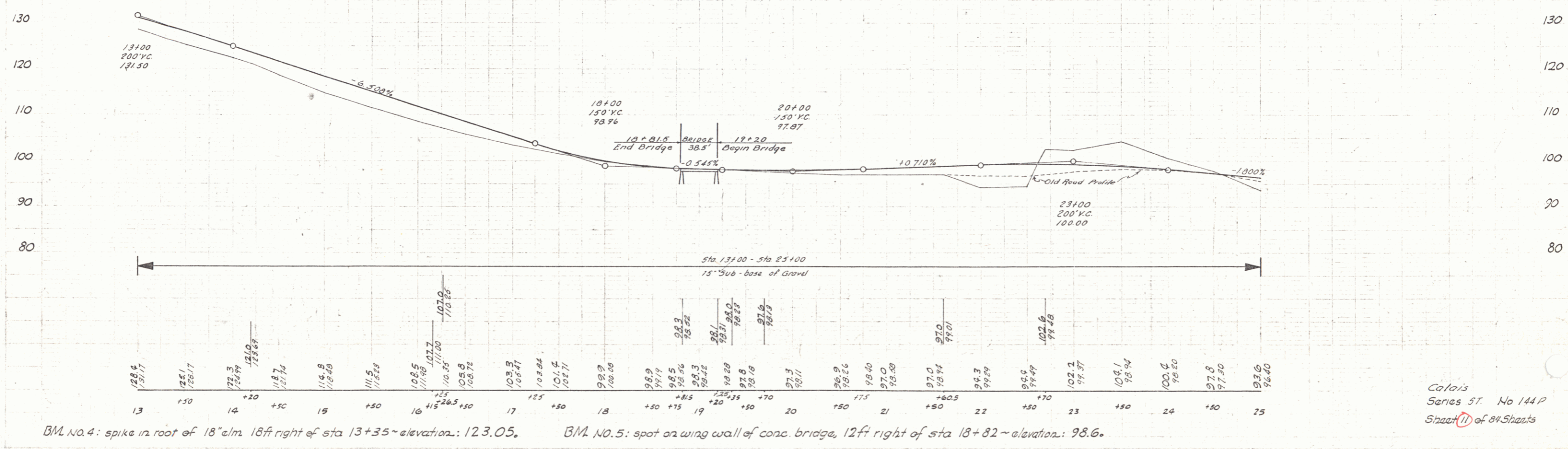
BM No 6 Spike in root of 24" elm
45 ft right of sta. 29+48 - elevation: 86.61

Calais
Series 5T. No 144P
Sheet 10 of 84 Sheets



| PARCEL INSTRUMENT | DATE | GRANTOR | GRANTEE | RECORDED | REMARKS |
|-------------------|---------|----------|--------------------|-------------------------|---------|
| A B | 2-6-41 | W.D.O.E. | CHARLES H. BARRETT | ST OF VT 23 338 2-8-41 | |
| A' | 2-16-41 | R.C.D. | D.B. DWINELL | ST OF VT 23 359 2-15-41 | |

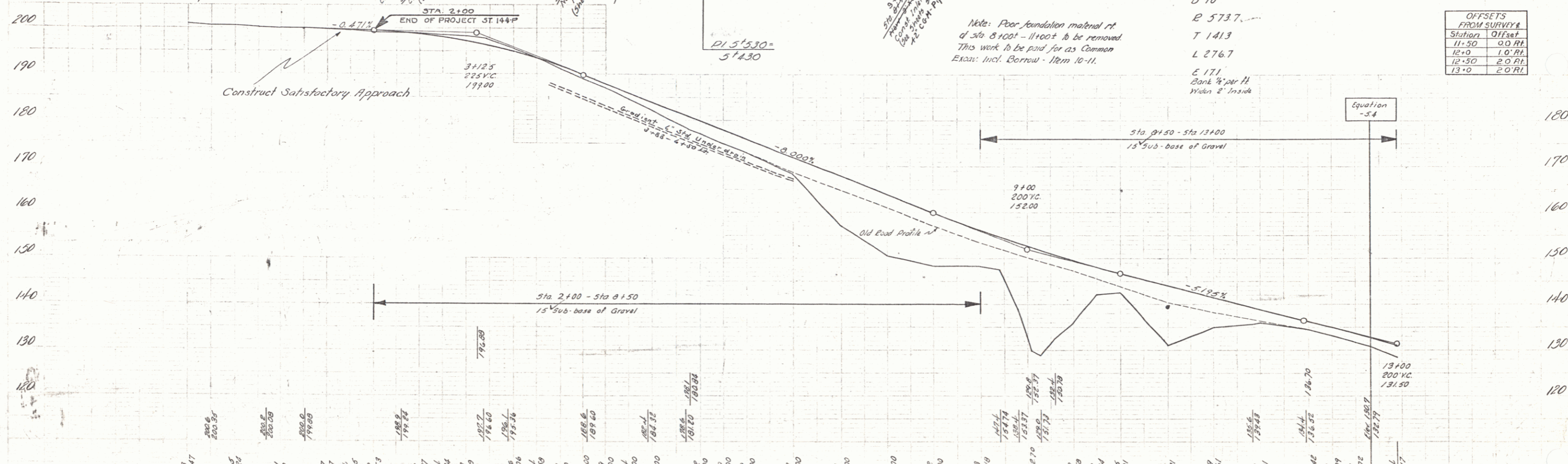
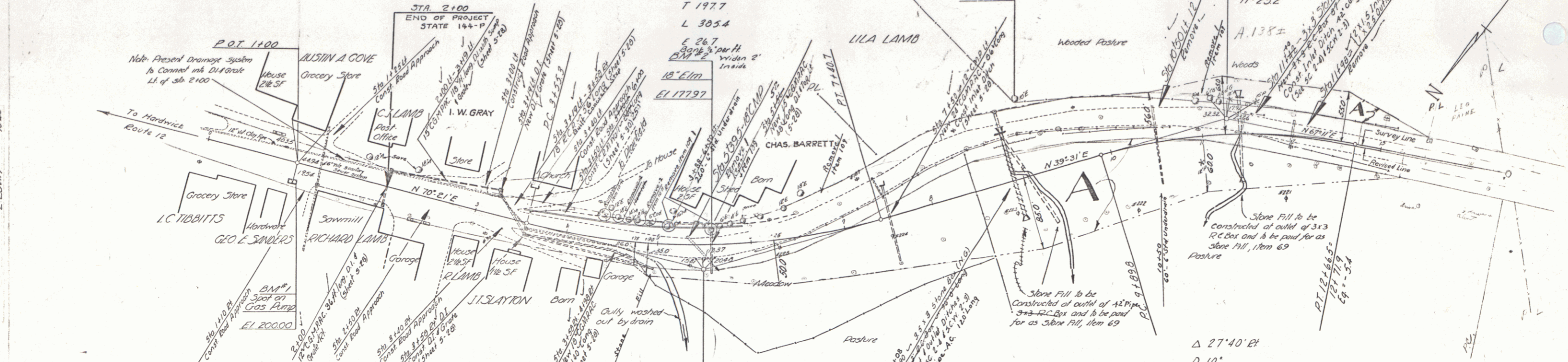
| OFFSETS FROM SURVEY E | STATION | OFFSET |
|-----------------------|---------|--------|
| 13+0 | 2.0' RL | |
| 13+50 | 2.0' RL | |
| 14+0 | 2.0' RL | |
| 14+50 | 1.0' RL | |
| 15+0 | 0.0' RL | |



Colais Series 5T. No 144 P Sheet 11 of 84 Sheets

| PARCEL INSTRUMENT | DATE | GRANTOR | GRANTEE | RECORDED | REMARKS |
|-------------------|-------------------|------------------|----------|---------------|---------|
| A | Q.C.D.D.E. 2-7-41 | JOHN T. SLAYTON | CALAIS | 23 354 2-8-41 | 2 CULV |
| A | W.O.D.E. 2-6-41 | ORBIN N. JACKSON | ST OF VT | 23 354 2-8-41 | |

$\Delta 30^{\circ} 50' 41''$
 $D 0'$
 $R 716.8$
 $T 1977$
 $L 305.4$

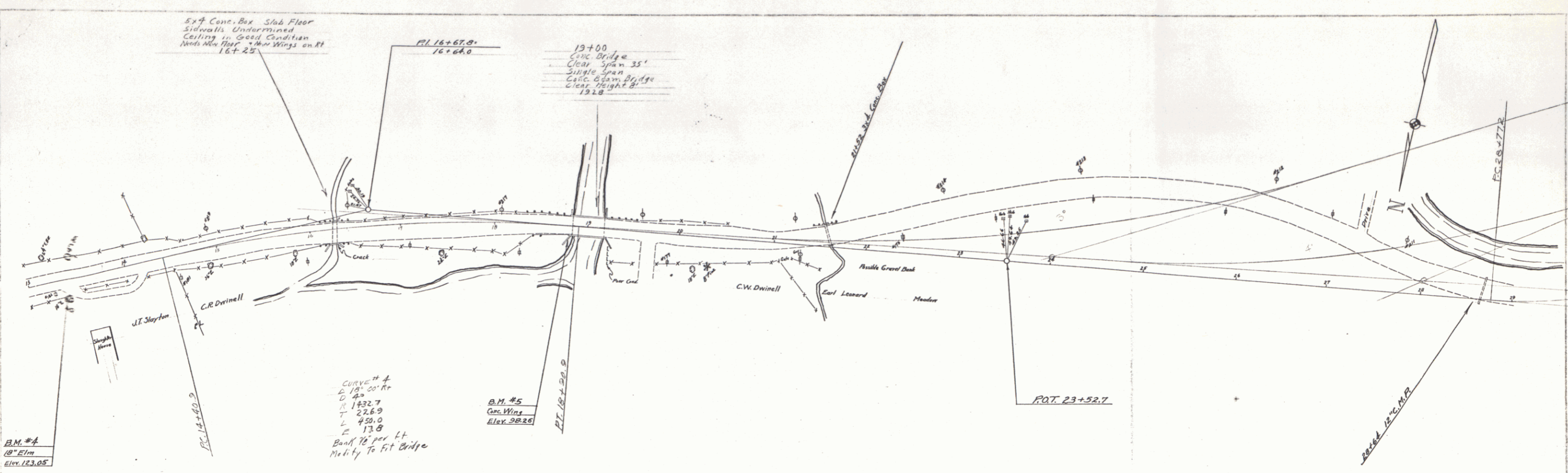


| Station | Offset |
|---------|--------|
| 11+50 | 0.0 RL |
| 12+0 | 1.0 RL |
| 12+50 | 2.0 RL |
| 13+0 | 2.0 RL |

STA 2+100 END OF PROJECT ST. 144+P
 STA 2+100 - STA 8+150
 STA 8+150 - STA 13+00
 STA 13+00
 15% Sub-base of Gravel
 15% Sub-base of Gravel
 15% Sub-base of Gravel

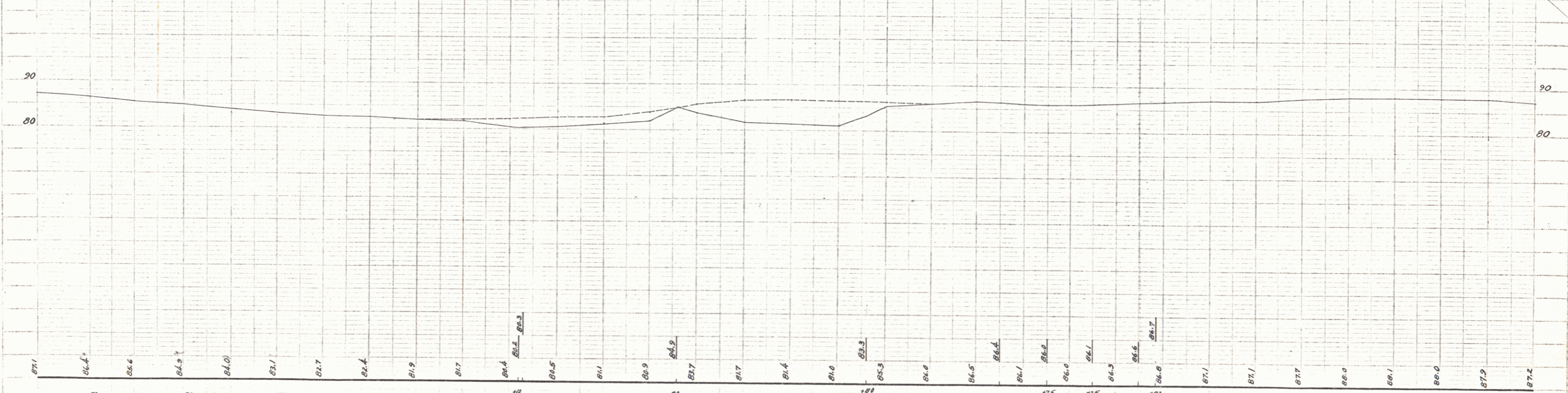
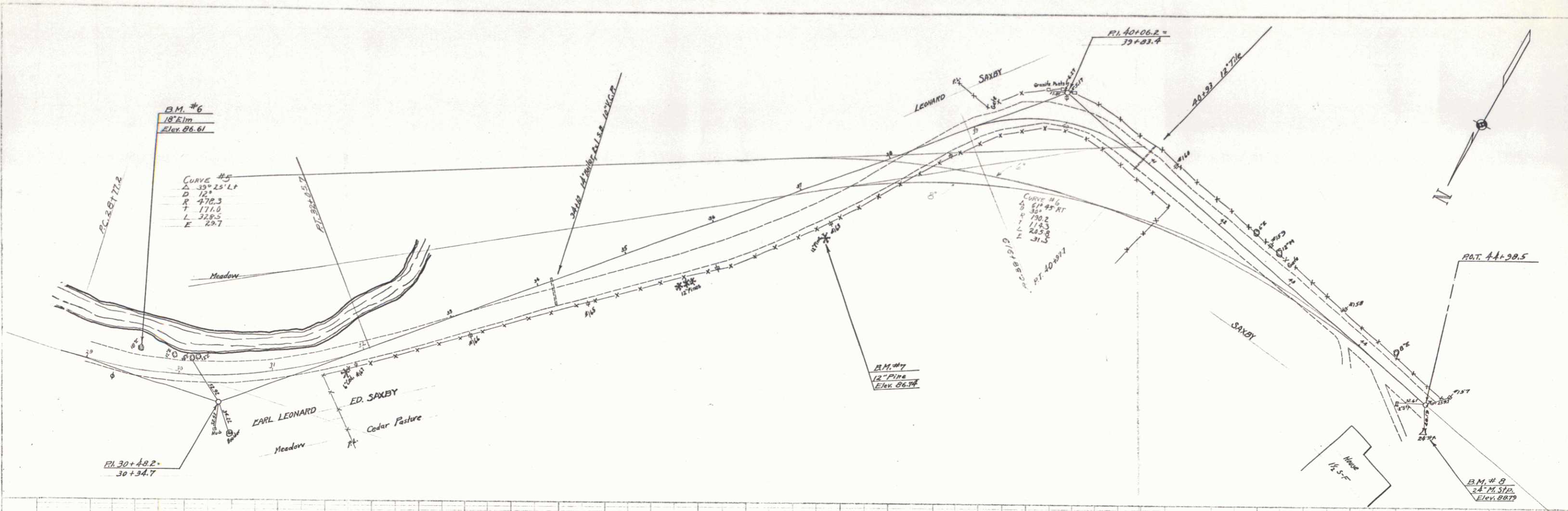
CALAIS
 SERIES STATE NO. 1144P
 SHEET 72 OF 84 SHEETS

PARSONS
CORP.
ENGINEERS
ARCHITECTS
CONSULTANTS



SHEET 12A

11



B.M. #6 SPIKE IN ROOT OF 18" ELM. 21 FT. LT. OF STA. 29+59 ELEV. 86.61
 B.M. #7 SPIKE IN ROOT OF 12" PINE 55 FT. RT. OF STA. 32+04 ELEV. 86.74
 B.M. #8 SPIKE IN ROOT OF 24" PINE STUMP 21 FT. RT. OF STA. 45+17 ELEV. 88.73

SHEET 12 B

Calvin W. P. 1946
 12

