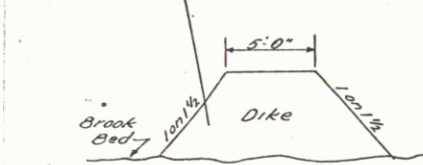
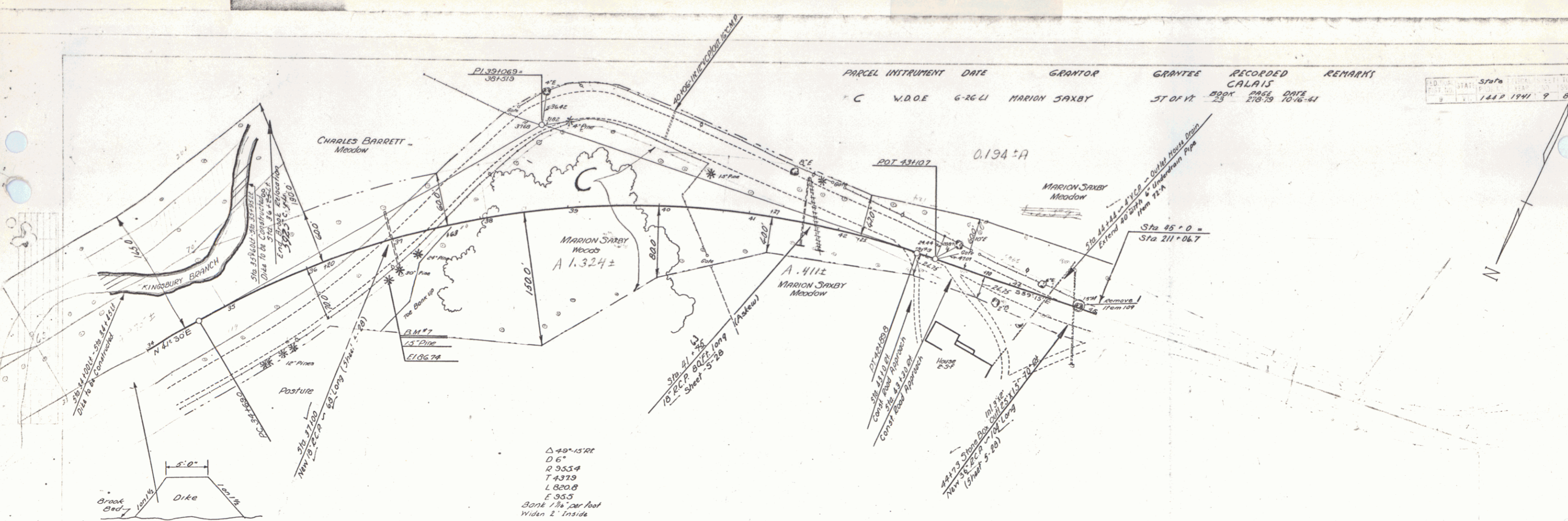


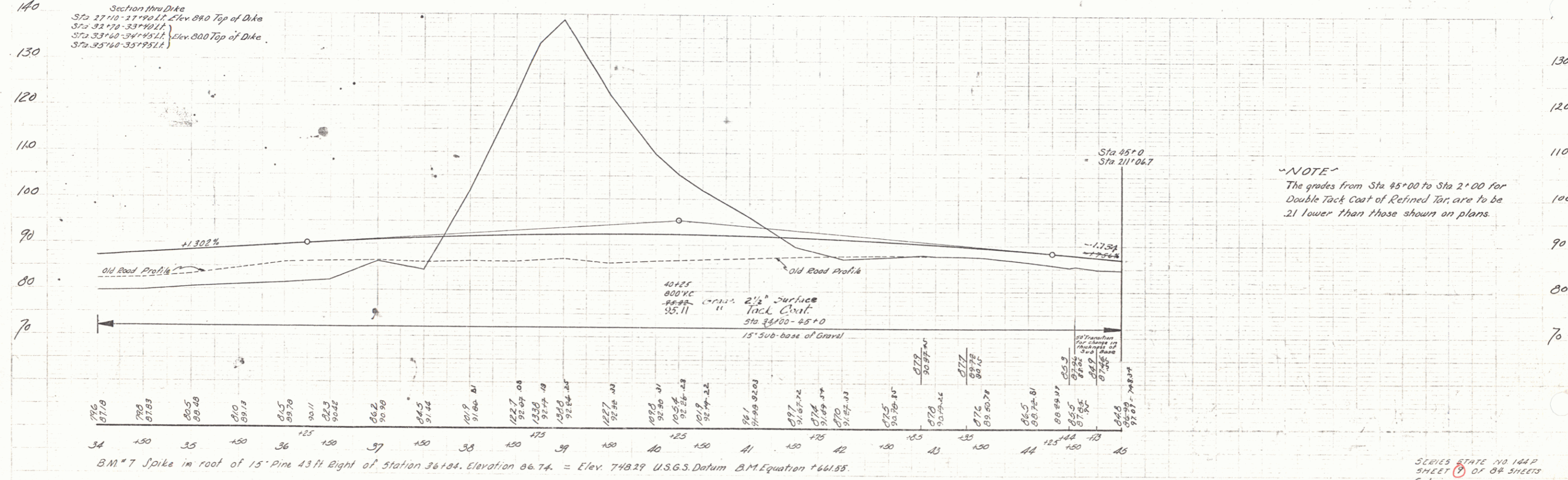
PARCEL INSTRUMENT DATE GRANTOR GRANTEE RECORDED
 C W.D.O.E 6-26-41 MARION SAXBY CALAIS
 BOOK PAGE DATE
 53 21879 10-16-41

Scale
 1" = 40'
 1447 1947 9 84



Section thru Dike
 Sta 27+10 - 27+90 Lt. Elev. 88.0 Top of Dike
 Sta 32+70 - 33+10 Lt. Elev. 88.0 Top of Dike
 Sta 33+00 - 34+15 Lt. Elev. 88.0 Top of Dike
 Sta 35+00 - 35+15 Lt. Elev. 88.0 Top of Dike

$\Delta 49^{\circ}15'10''$
 $D 6'$
 $R 953.4$
 $T 437.9$
 $L 820.8$
 $E 95.5$
 Bank $1\frac{1}{2}$ per foot
 widen 2' inside



B.M. #7 Spike in root of 15" Pine 43 ft Right of Station 36+134. Elevation 86.74 = Elev. 748.29 U.S.G.S. Datum B.M. Equation +661.55.

NOTE
 The grades from Sta 45+00 to Sta 2+00 for
 Double Tack Coat of Refined Tar, are to be
 2.1 lower than those shown on plans.

SCALE STATE NO 104P
 SHEET 8 OF 84 SHEETS
 Calais