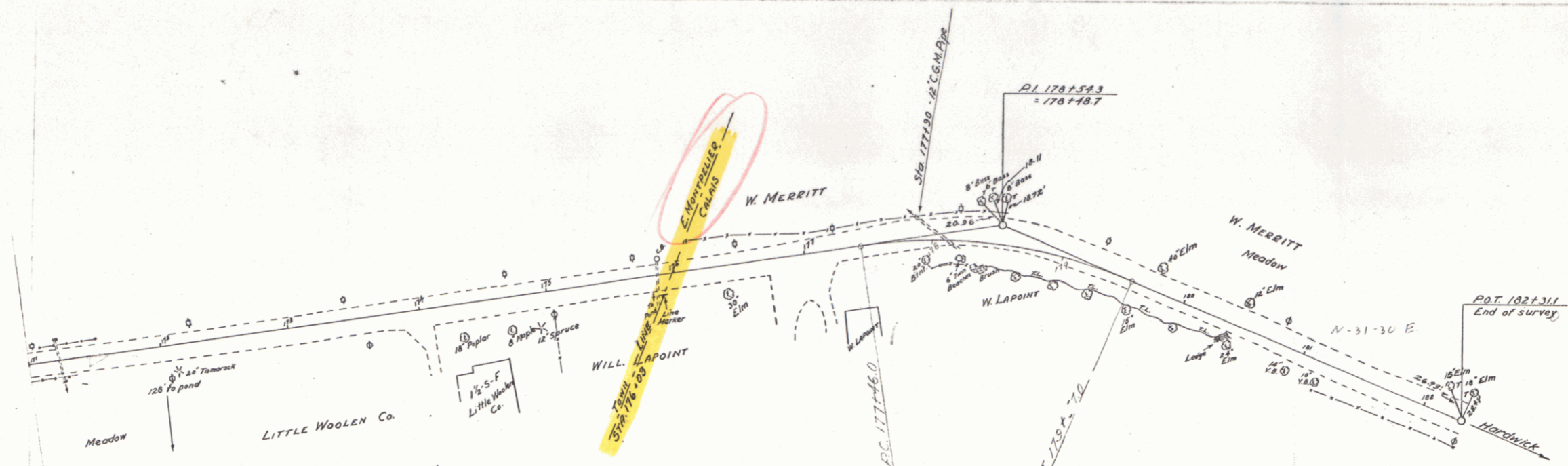
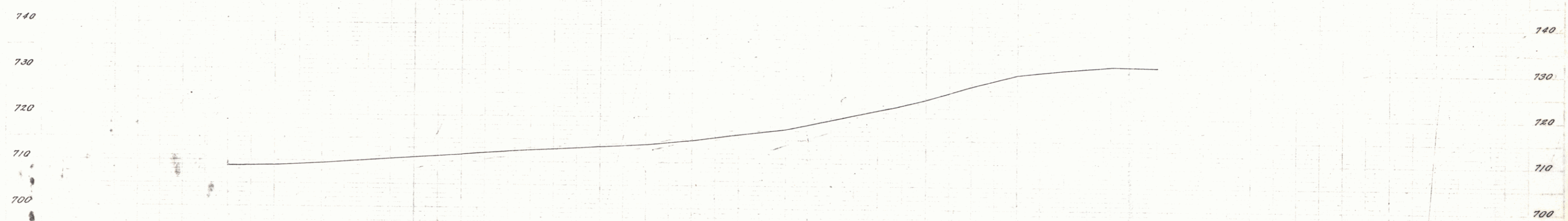


Albion  
Survey  
Group  
TAKED



CURVE #  
Δ 31° 39' 41\"/>  
D 15\"/>  
R 100.3  
L 211.0  
E 15.0

92 93 94 94 102 2.0 2.5 3.3 3.7 4.4 5.2 6.7 11.7 16 11.5 4.2 7.3 17 6.3 1.6 0



Station	Elevation
171	708.9
172	709.0
173	709.5
174	710.1
175	710.9
176	711.6
177	712.2
178	712.9
179	713.4
180	713.9
181	714.9
182	716.2
183	717.4
184	718.4
185	719.4
186	721.5
187	722.2
188	723.0
189	727.0
190	729.3
191	730.6
192	731.3
193	731.1

SHEET 16

14