

INDEX OF SHEETS

SHEET NO. 1	TITLE PAGE
2	TYPICAL CROSS-SECTION OF IMPROVEMENT
3	BANKING AND WIDENING TABLES
4-9	PLAN AND PROFILE SHEETS
10	STANDARD STRUCTURE SHEET 5-28 PIPE CULVERTS
11	STANDARD STRUCTURE SHEET 5-30 GUARDED EMBANKMENT
12	BRIDGES, SIGNS AND LIGHTS
13-18	CROSS SECTIONS
20A	STANDARDS FOR WIRE WIRE HIGHWAY GUARD

Standard sheet 5-28 submitted to the Chief Engineer on May 15, 1933.
Standard sheet 5-30 submitted to the Chief Engineer on Aug. 15, 1933.

FED. ROAD DIST. NO.	STATE	PROJECT NO.	FISCAL YEAR	SHEET NO.	TOTAL SHEETS
9	VT.	44	1933	1	20

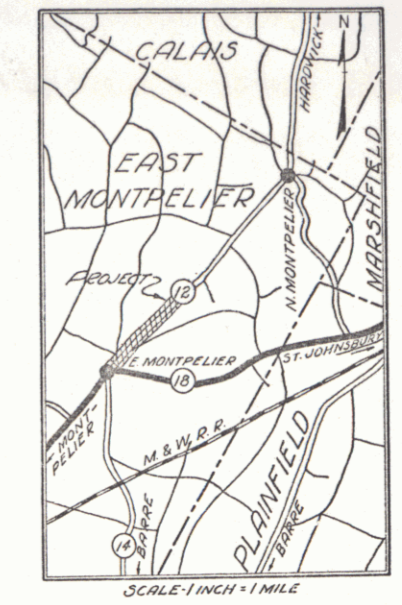
STATE OF VERMONT
STATE HIGHWAY DEPARTMENT

PLAN AND PROFILE OF PROPOSED
STATE HIGHWAY
NATIONAL RECOVERY SECONDARY PROJECT

TOWN OF EAST MONTPELIER Pin # 00R755
MONTPELIER-HARDWICK ROAD Route VT 14

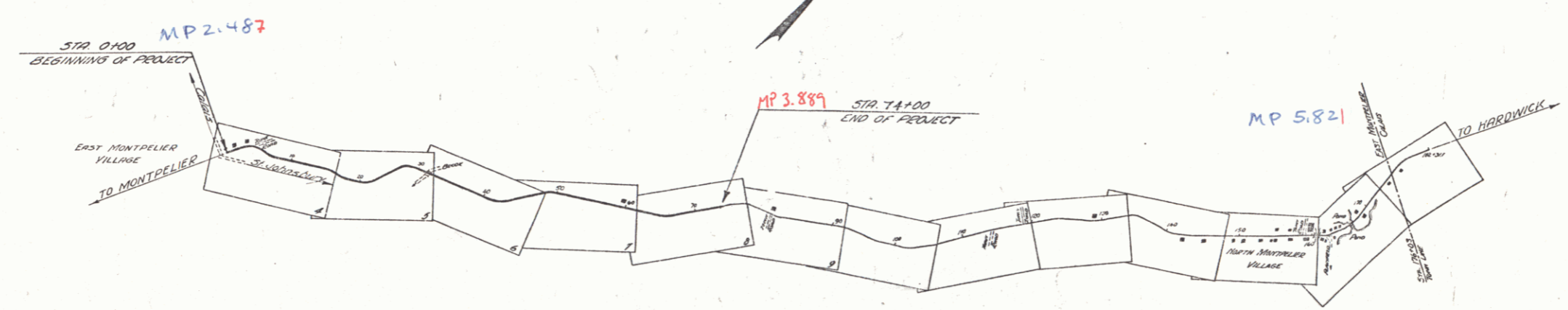
FROM A POINT 100 FT. NORTHERLY FROM THE INTERSECTION WITH ROUTE 18
NORTH-EASTERLY 1.399 MILES TO A POINT 750 FT. WEST-
ERLY FROM THE INTERSECTION OF TOWN ROAD

LENGTH OF PROJECT 7387.6 FT. = 1.399 MILES



Project No. NRS 144

RECORD PLANS



NOTE: ANY FURTHER INFORMATION CONCERNING FINAL QUANTITIES, AMOUNTS, OR OTHER DETAILS RELATIVE TO THIS PROJECT MAY BE OBTAINED EITHER IN THE FIELD BOOKS OR THE LATEST FILE.

Dec. 15, 1933
APPROVED: H.E. Sargent
COMMISSIONER OF HIGHWAYS

SUBMITTED BY ORDER OF THE STATE HIGHWAY BOARD
RIGHT-OF-WAY DIVISION
TOWN FILE

PERPETUAL
of VT 14
(To Be Returned To Owner)

Note - These plans are subject to such revisions as may be required by the Bureau of Public Roads or the Commissioner of Highways. Construction is to be carried on in accordance with the standard road and bridge specifications of 1930 with all subsequent approved revisions and such specifications and special provisions as are submitted with the plans.

CONVENTIONAL SIGNS

COUNTY LINE	GROUND ELEVATION	CURVE DATA
TOWN LINE	GRADE ELEVATION	
FENCE LINE		DEFLECTION ANGLE
STONE WALL		DEGREE OF CURVE
UNFENCED PROPERTY		RADIUS OF CURVE
GUARD RAIL		TANGENT DISTANCE
TRAVELED WAY		LENGTH OF CURVE
RAILROAD		EXTERNAL DISTANCE
RETAINING WALL		POINT OF INTERSECTION
CENTER LINE		POINT OF CURVE
SURVEY LINE		POINT OF TANGENT
CULVERT		POINT ON TANGENT
DROP INLET		
TROLLEY POLE		
POWER POLE		
TELEPHONE POLE		
TREES		
HEDGE		

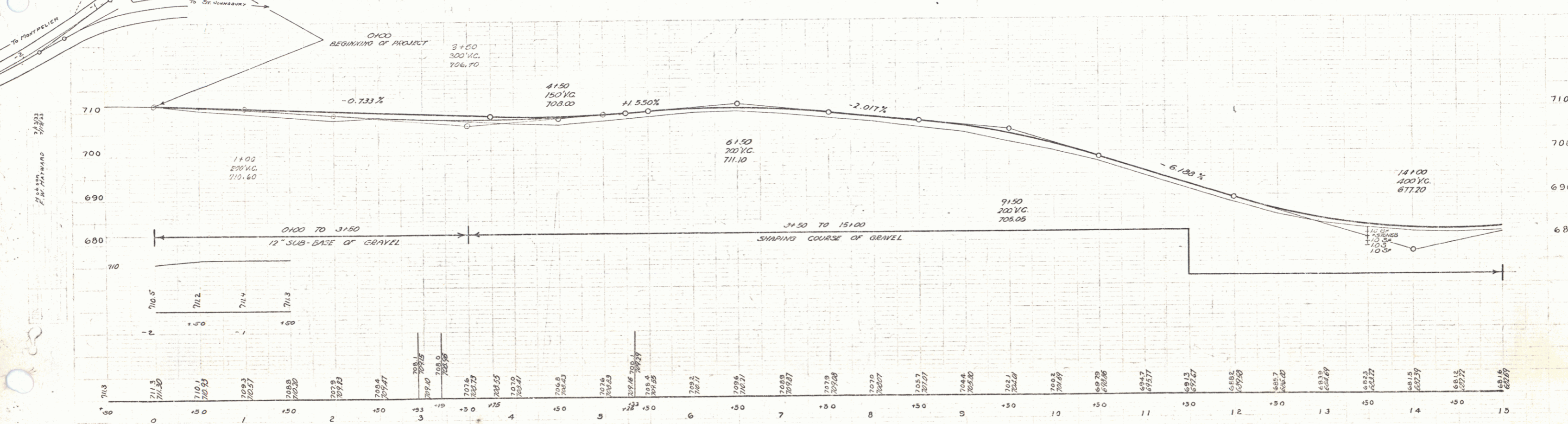
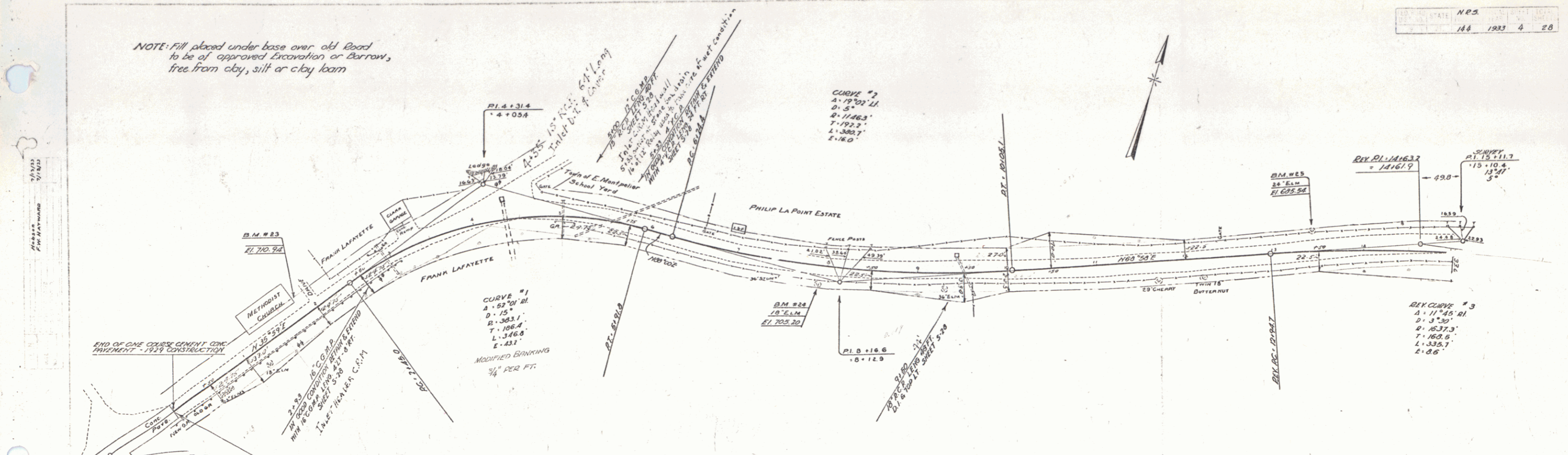
East Montpelier, NRS 144
Contract - 1000
Record Plans
Year Built - 1934

SCALES
TITLE - 1" = 1000'
PLAN - 1" = 50'
PROFILE - 1" = 20'
CROSS SECTIONS - 1" = 5'

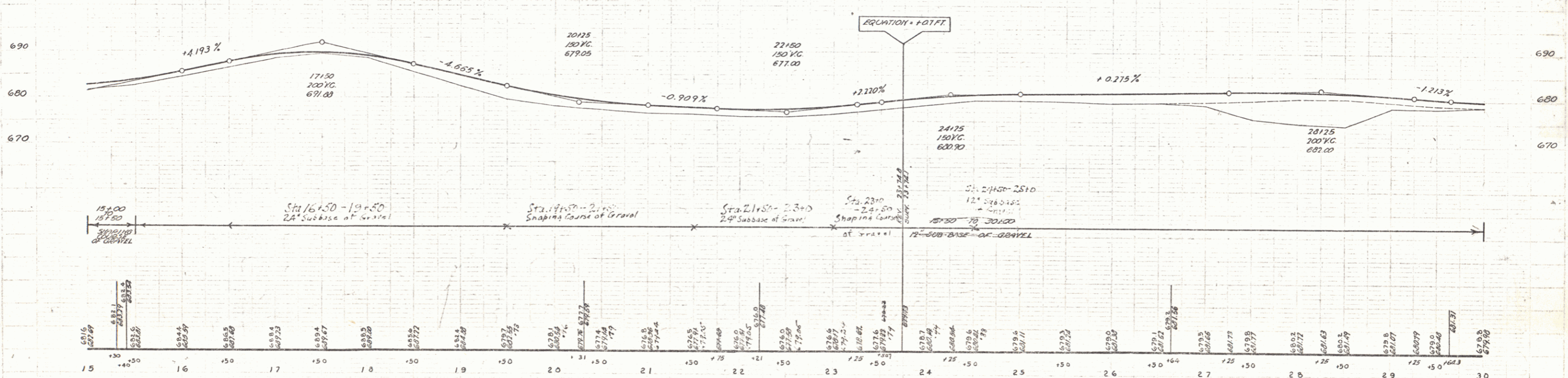
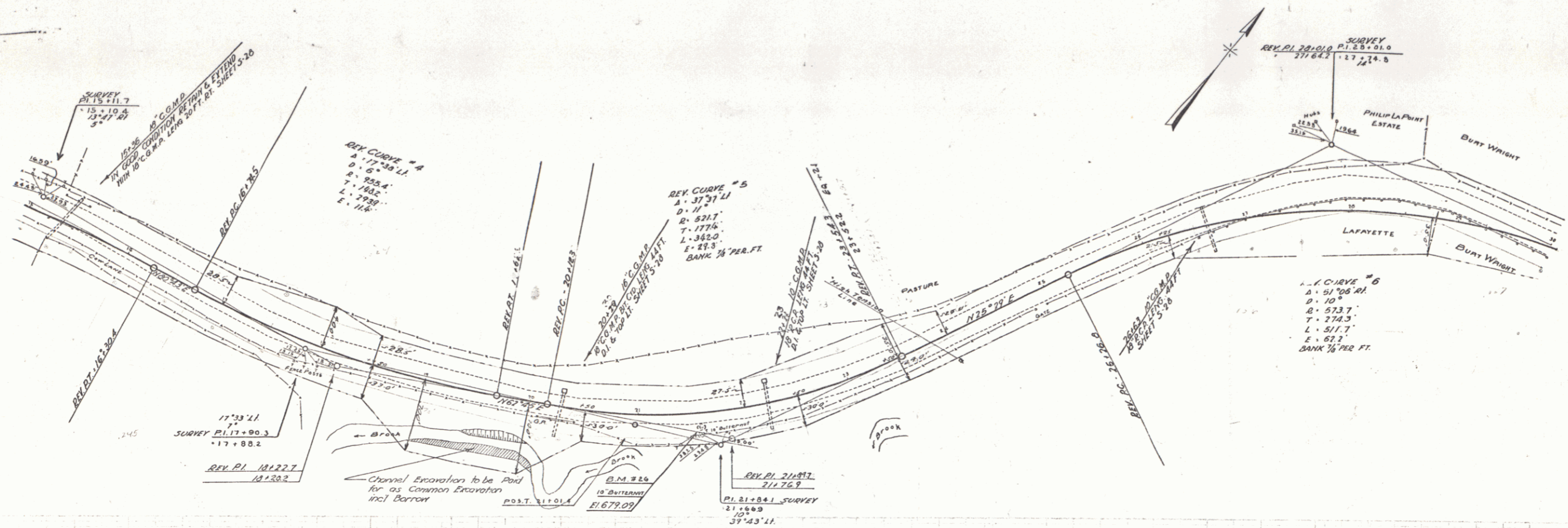
APPROVED Dec 15 1933
S. J. [Signature]
DIRECTOR - BUREAU OF PUBLIC ROADS

SERIES NEG. NO. 44
SHEET 1 OF 20

NOTE: Fill placed under base over old Road to be of approved Excavation or Borrow, free from clay, silt or clay loam

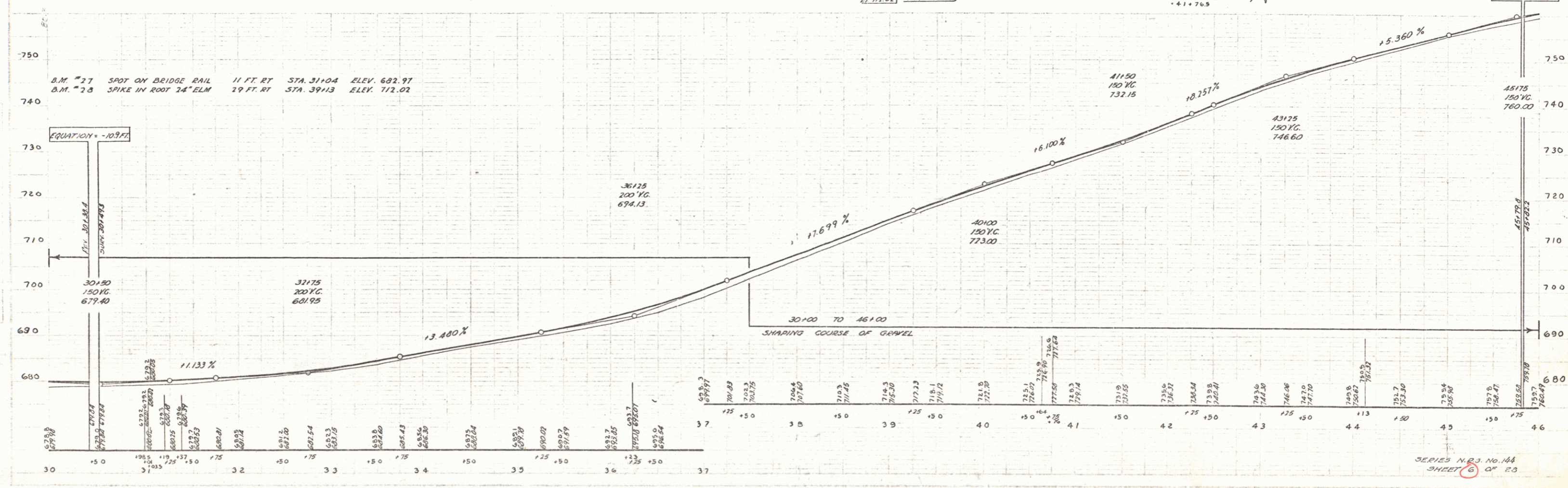
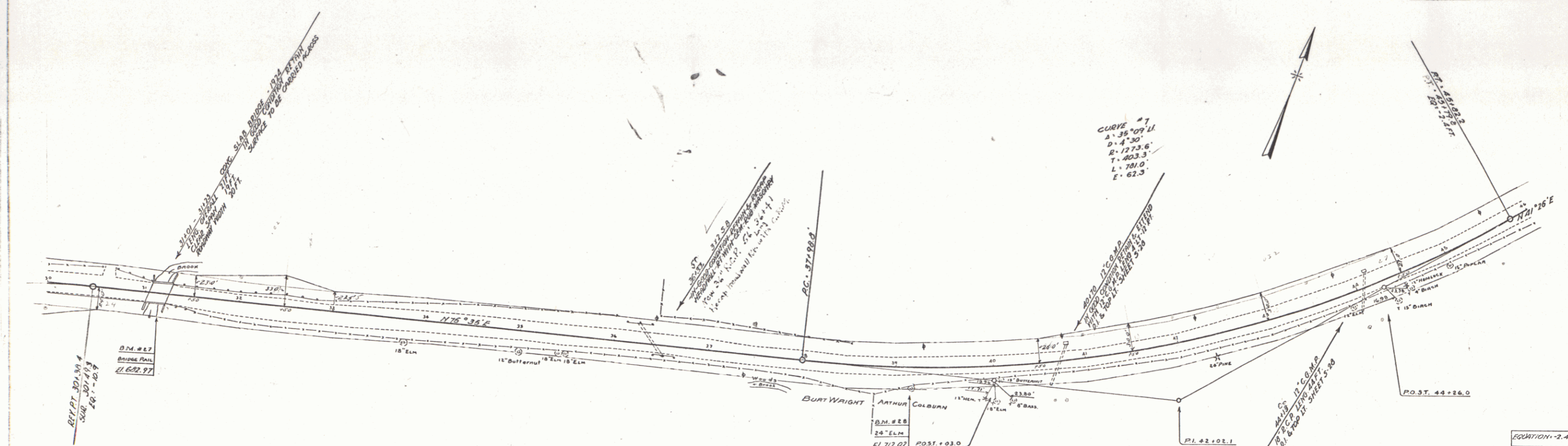


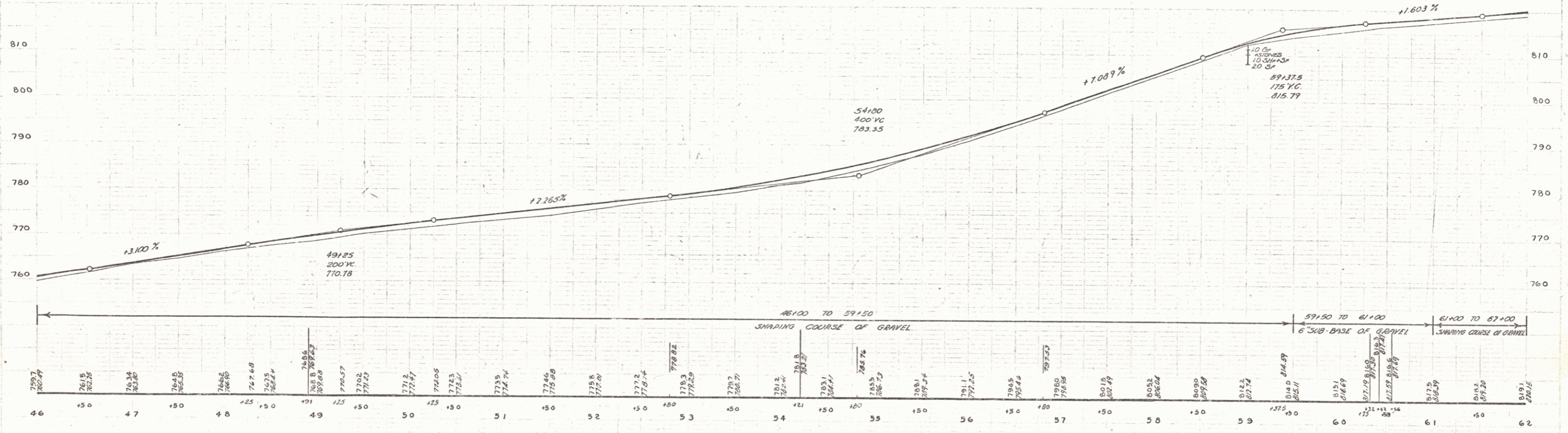
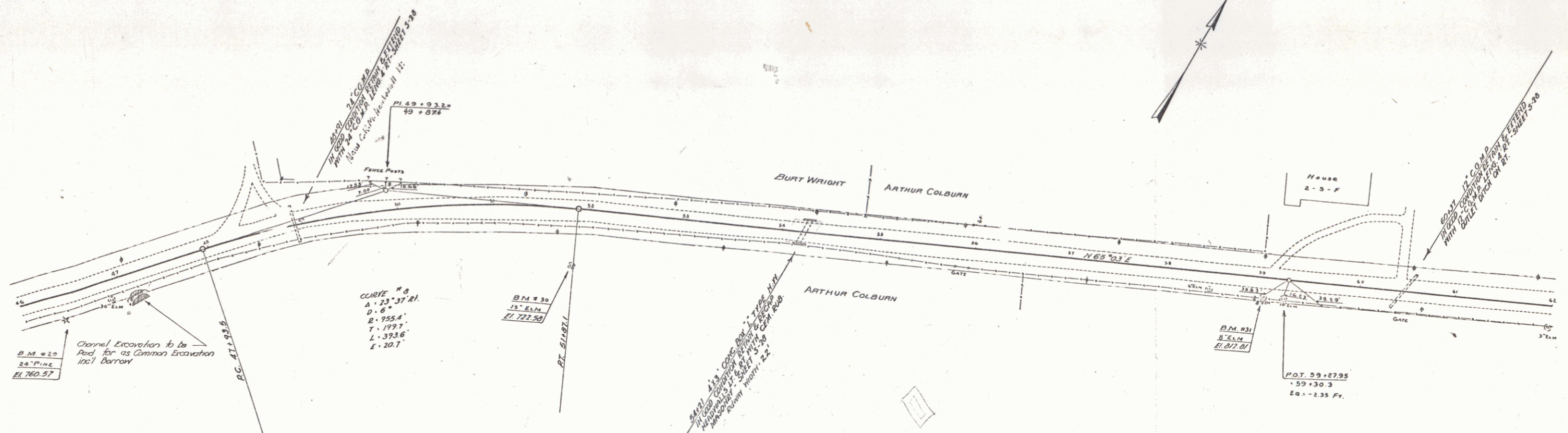
B.M. #23 PAINT SPOT ON NE COR. CHURCH 19 FT. LT. STA. 1+80 ELEV. 710.94
 B.M. #24 SPIKE IN ROOT 18" ELM. 10 FT. LT. STA. 7+93 ELEV. 705.20
 B.M. #25 SPIKE IN ROOT 24" ELM. 19 FT. LT. STA. 13+43 ELEV. 695.34



15+00 to 15+50: 24" Subbase of Gravel
 15+50 to 19+50: 24" Subbase of Gravel
 19+50 to 21+50: 24" Subbase of Gravel
 21+50 to 23+50: 24" Subbase of Gravel
 23+50 to 24+75: 24" Subbase of Gravel
 24+75 to 28+75: 12" Subbase of Gravel
 28+75 to 30+00: 12" Subbase of Gravel

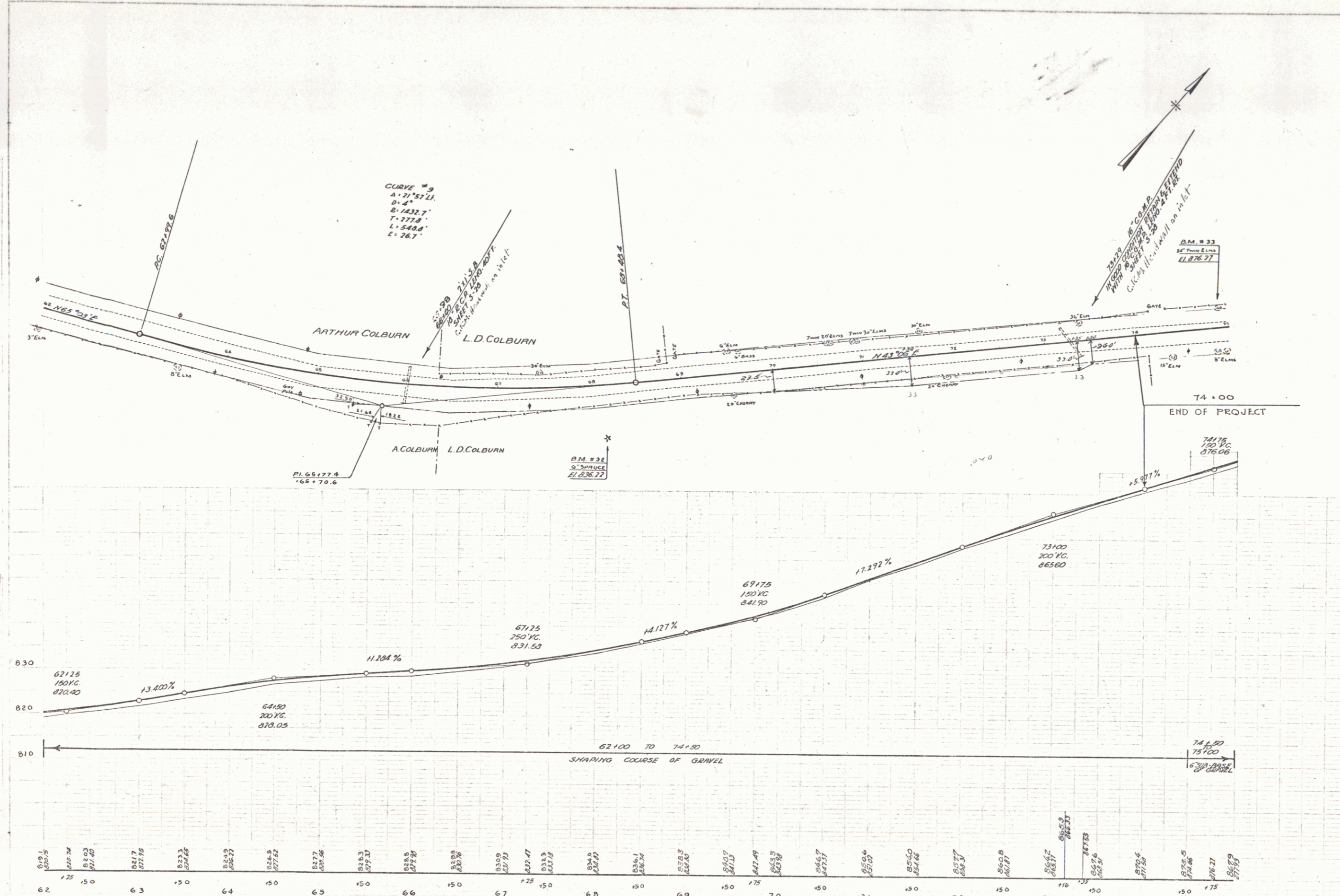
B.M. # 26 SPIKE IN ROOT 10 BUTTERNUT 19 FT RT STA. 21+59 ELEV. 679.09

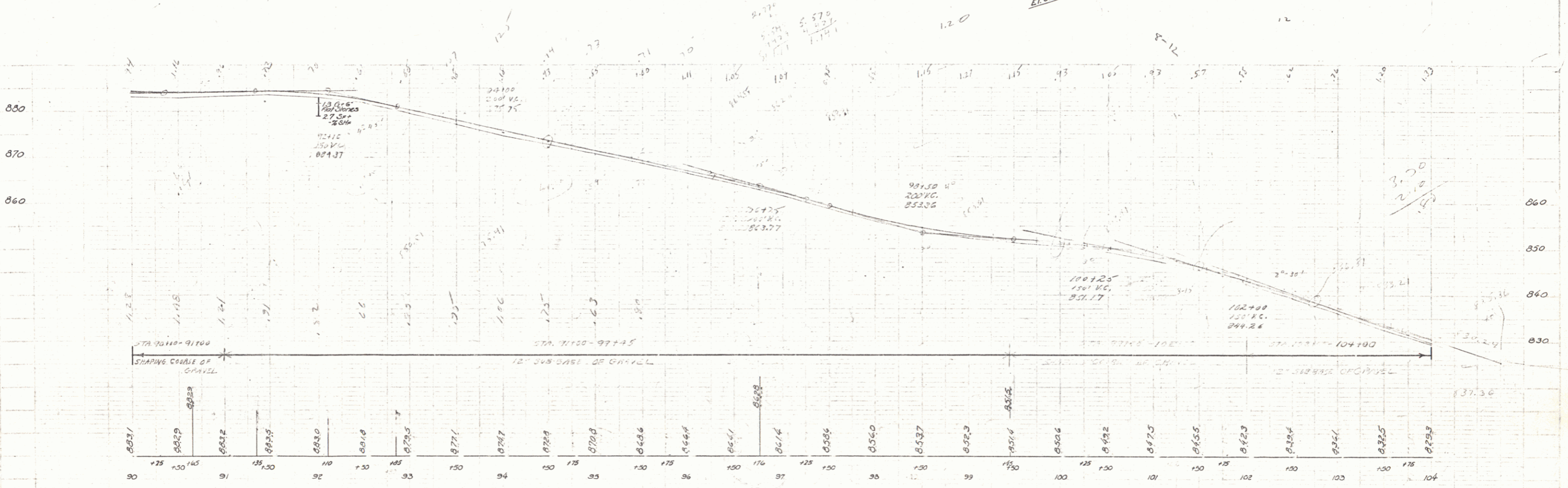
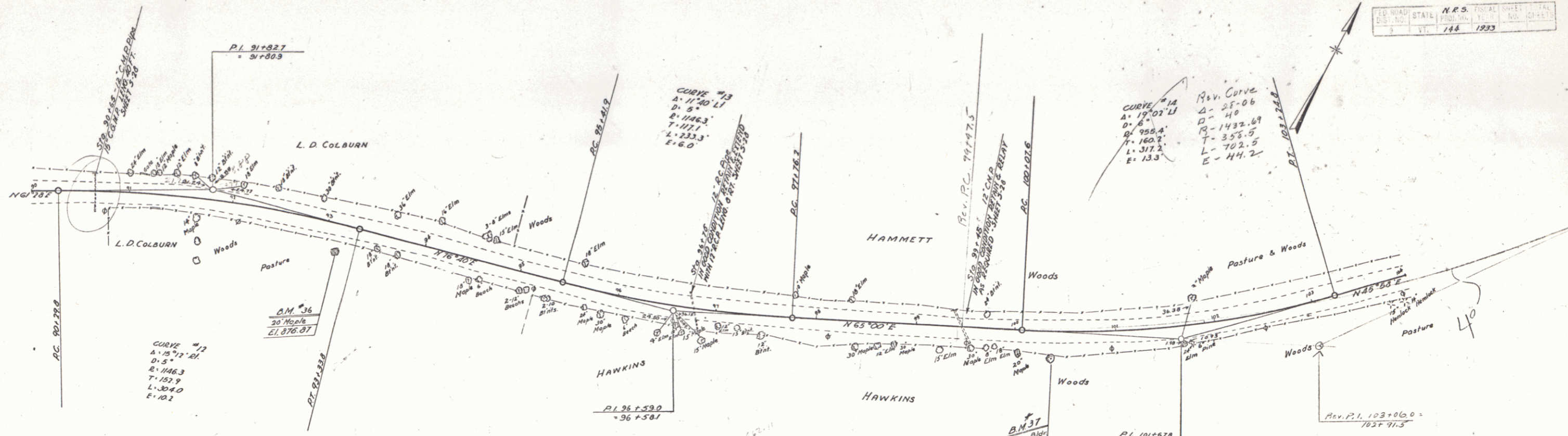




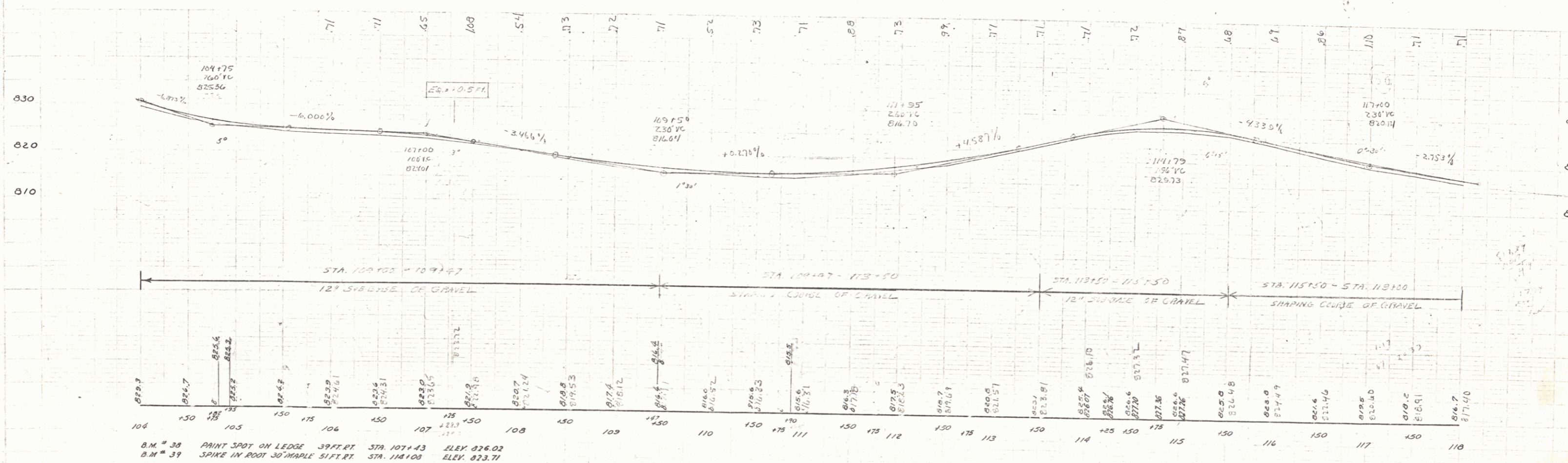
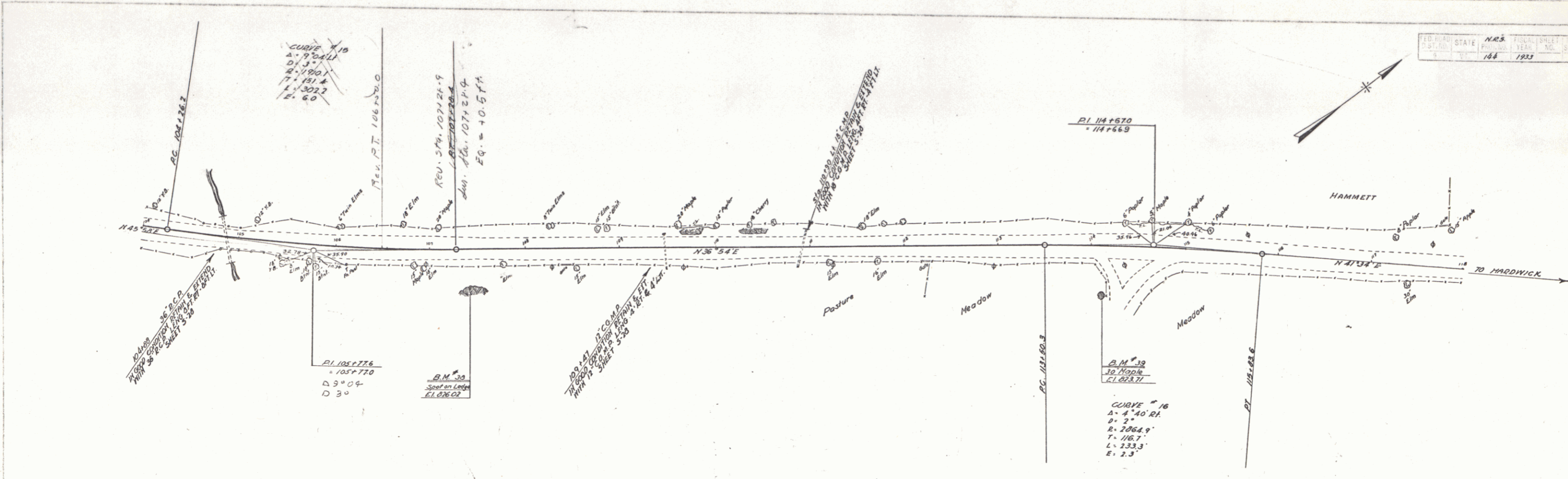
Hobson
 F. W. Hammond
 7/19/33

Hobson
 F. W. Hammond
 7/19/33



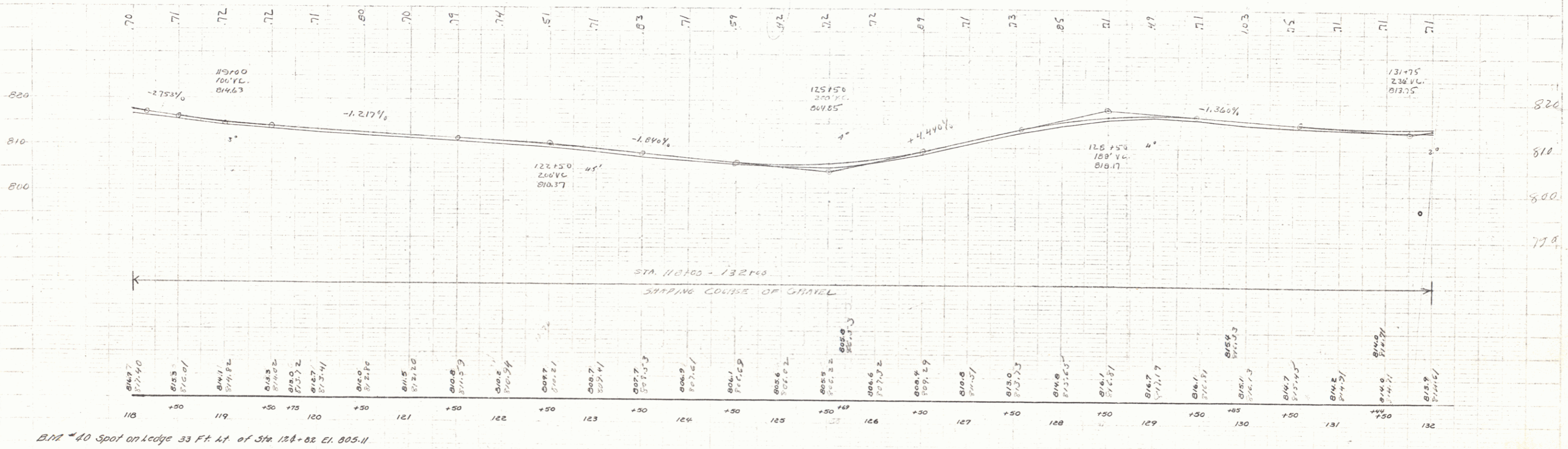
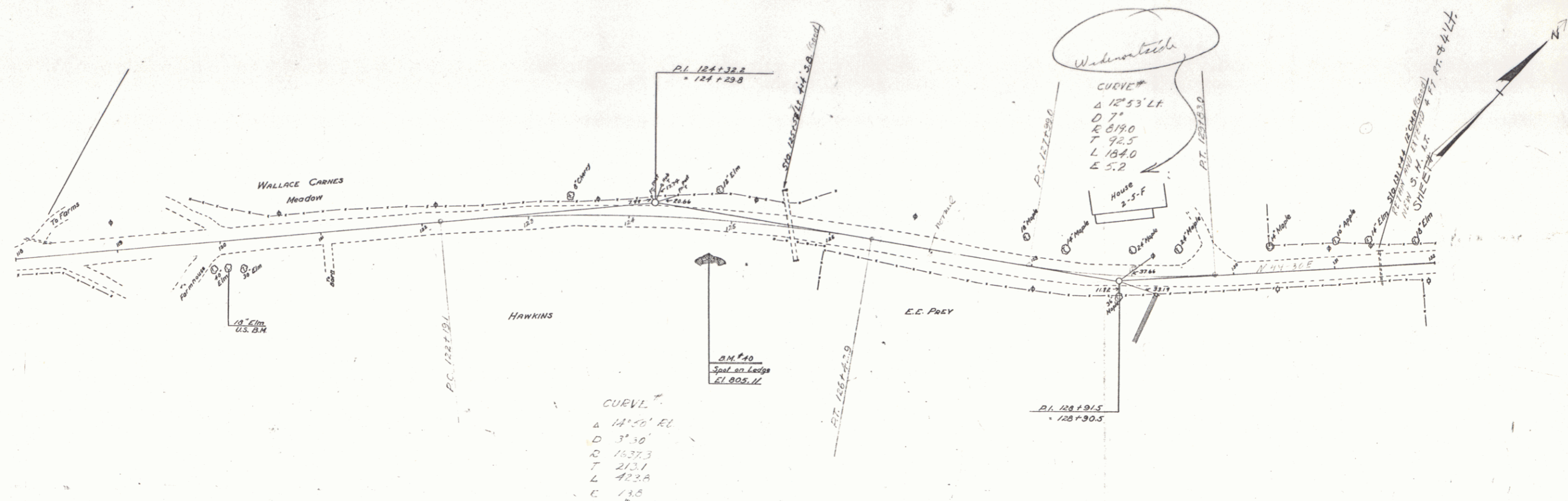


B.M. # 35 SPIKE IN ROOT 70" MAPLE 26 FT. STA. 93+10 ELEV. 816.87
 B.M. # 37 PAINT SPOT ON DOGWOOD 135 FT. STA. 100+35 ELEV. 850.59



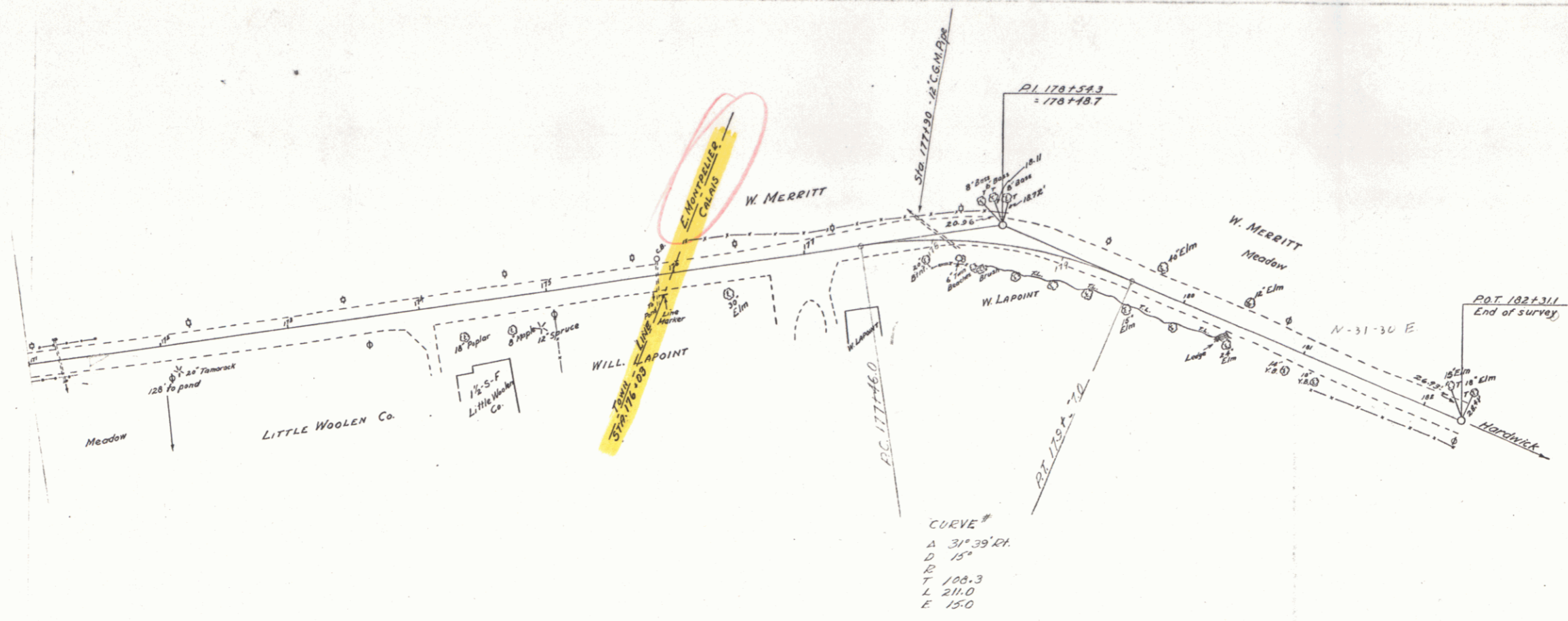
B.M. # 38 PAINT SPOT ON LEDGE 39 FT. RT. STA. 107+43 ELEV. 826.02
 B.M. # 39 SPIKE IN ROOT 30" MAPLE 5 FT. RT. STA. 114+08 ELEV. 823.71

Hobson
 Buckley
 Griggs
 1930

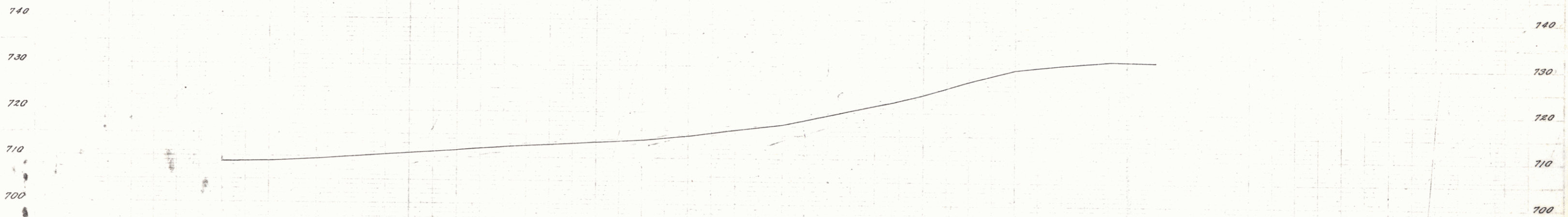


B.M. #40 Spot on ledge 33 Ft. N. of Sta. 124+82 EL. 805.11

Alison
Survey
Group
TAKED



92 93 94 94 102 2.0 3.3 3.7 4.4 5.2 6.7 11.7 16 11.5 4.2 7.3 17 6.3 1.6 0



Station	Elevation
171	708.9
172	709.0
173	709.5
174	710.1
175	710.9
176	711.6
177	712.2
178	712.9
179	713.4
180	713.9
181	714.9
182	716.2
183	717.4
184	718.4
185	719.4
186	721.5
187	722.2
188	723.0
189	724.0
190	725.3
191	730.6
192	731.3
193	731.1

SHEET 16

14