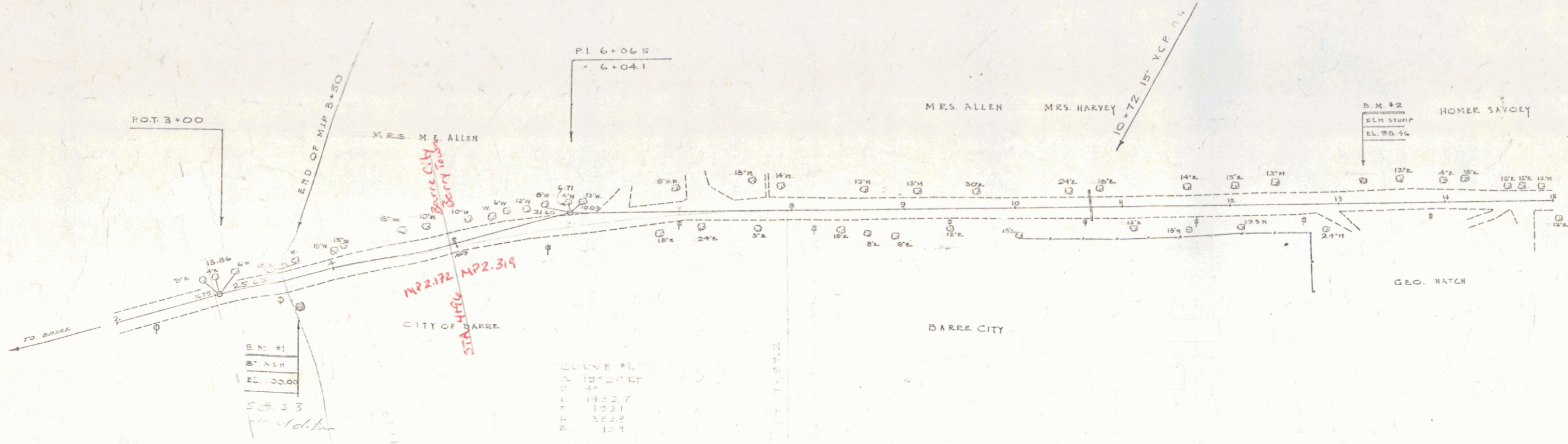


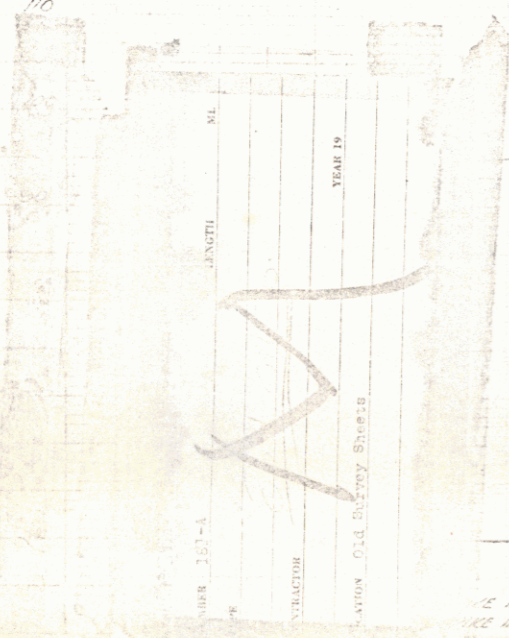
DRAWN BY
 I. MASCHI
 3/34



MP 2.172
 MP 2.319
 STA 1450

CURVE #1
 RADIUS 125.0 FT
 CHORD 48.0
 DELTA 143.7
 TANGENT 32.2
 OFFSET 12.1

Town: Barre Town
 Project No: 181A
 Date: 9/1/34
 Rte. VT 14
 Pin # 00R753
 MP 2.319-3.115



RIGHT-OF-WAY DIVISION
 TOWN FILE
 PERPETUAL
 Town of VT 14
 (To Be Returned To R.O.W. Division)

3	130	4	130	5	107	6	130	7	130	8	130	9	130	10	130	11	130	12	130	13	130	14	130	15
---	-----	---	-----	---	-----	---	-----	---	-----	---	-----	---	-----	----	-----	----	-----	----	-----	----	-----	----	-----	----

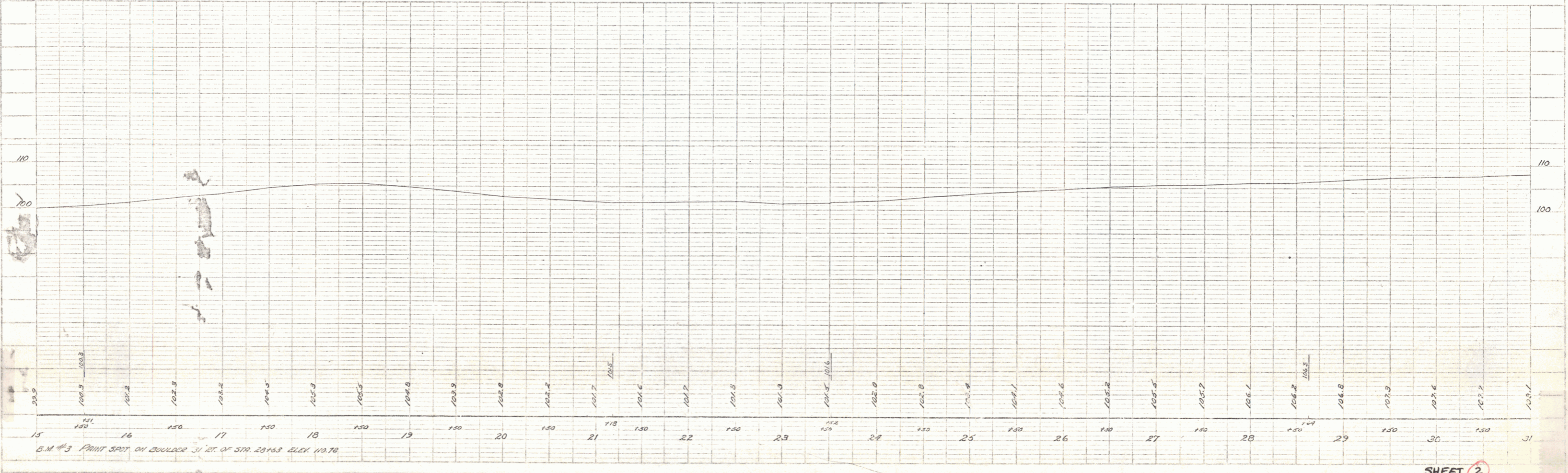
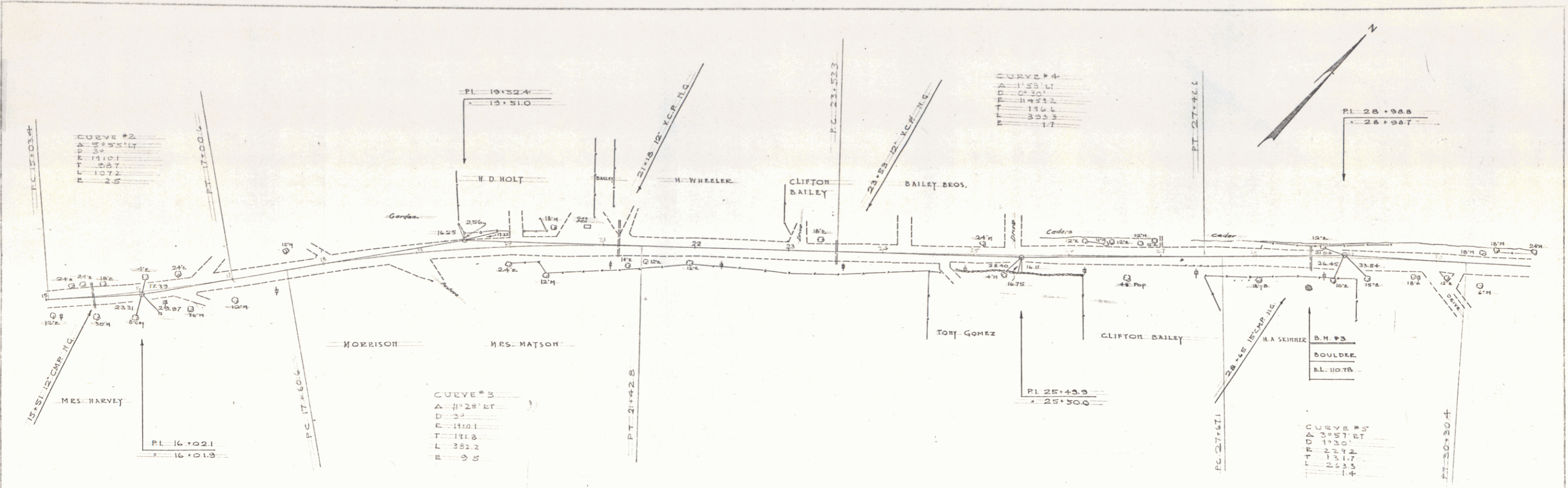
SHEET ①

STEARNS R. JENKINS

VT 14 1

PLAN
 DRAWN BY: NADOLSKI
 CHECKED BY: LAMAR, H.
 DATE: 9/34
 D. W. MCCHEE

PROFILE
 DRAWN BY: [illegible]
 CHECKED BY: [illegible]
 DATE: [illegible]



5 M #3 PRINT SHOP ON BOULDER ST. OF ST. 20163 ELEV. 119.70

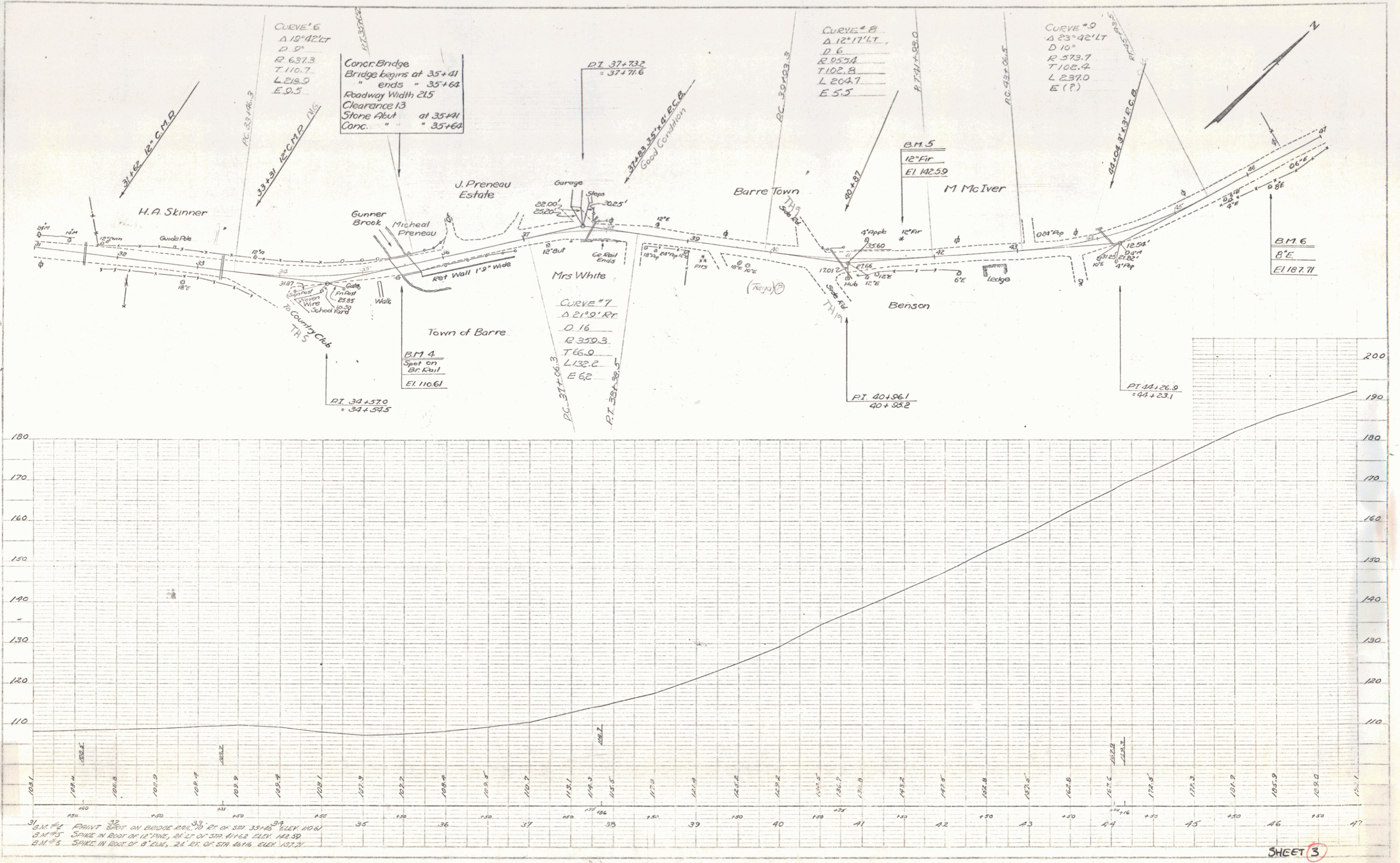
PLATE 1 - FLETCHER & PARRIS TABLES
 1912 EDITION, REVISED

SHEET 2

2

PROJECT: Barre, Vermont
 DRAWN BY: W. H. ...
 CHECKED BY: ...
 DATE: ...

PROFILE: Barre, Vermont
 SCALE: 1" = 40'
 DATE: ...



31 B.M. #1 PAINT SPOT ON BRIDGE PILE TO RT OF STA 35+43 ELEV 110.61
 32 B.M. #2 SPARK IN ROOT OF 12" PINE, 21' LT OF STA 41+62 ELEV 142.50
 33 B.M. #3 SPARK IN ROOT OF 8" CUM, 24' EX OF STA 46+16 ELEV 137.77

PART 1 - PLAN PROFILE 1:40 & 1:40
 SCALE: 1" = 40' HORIZ. & 1" = 40' VERT.

SHEET 3