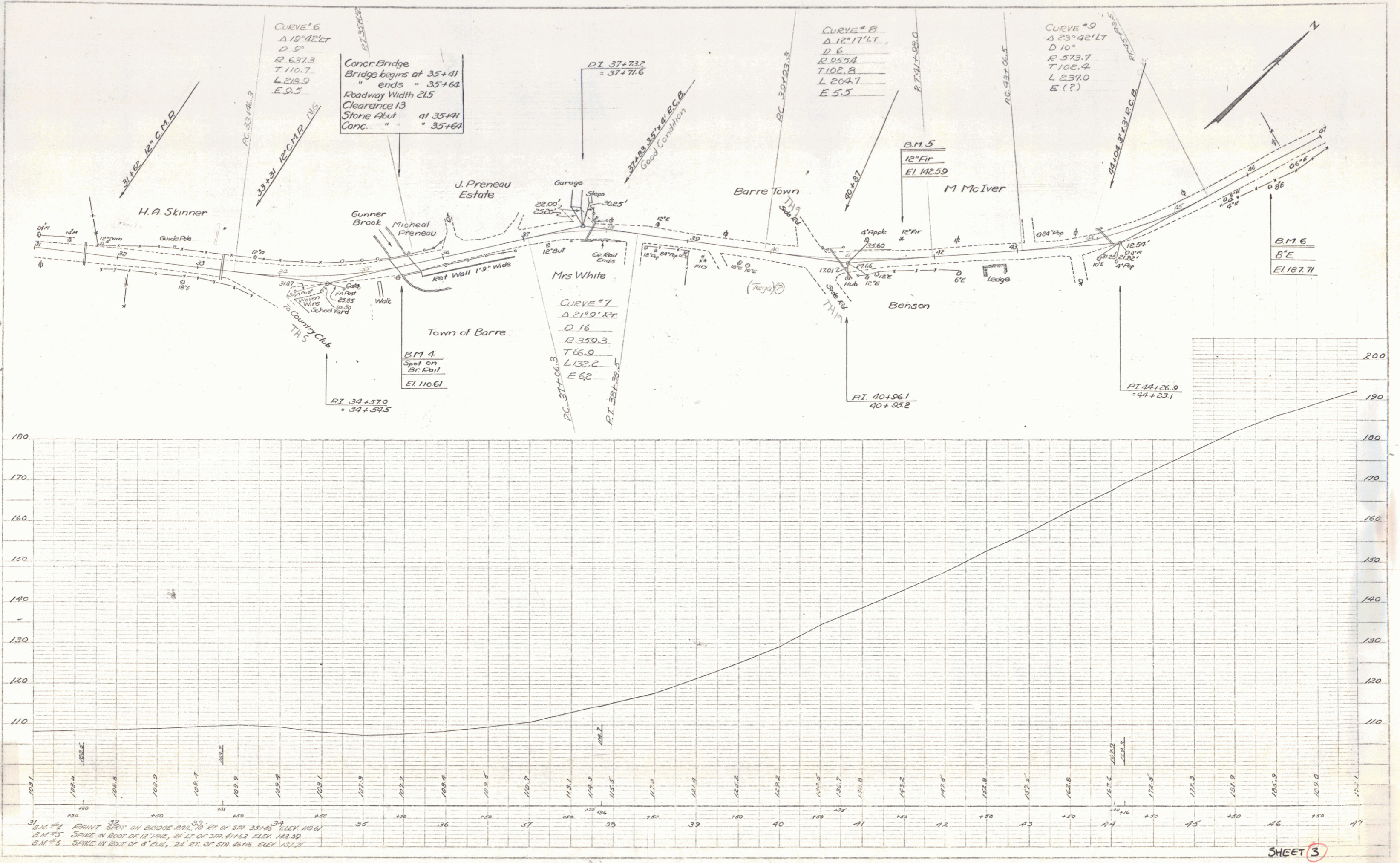


PROJECT: Barre, Vermont  
 DRAWN BY: W. H. ...  
 CHECKED BY: ...  
 DATE: ...

PROFILE: Barre, Vermont  
 SCALE: 1" = 100'  
 DATE: ...



31 B.M. #1 PAINT SPOT ON BRIDGE PILE TO RT OF STA 35+43 ELEV. 110.61  
 32 B.M. #2 SPARK IN ROOT OF 12" PINE, 21' LT OF STA 41+62 ELEV. 142.50  
 33 B.M. #3 SPARK IN ROOT OF 8" CUM, 24' EX OF STA 46+16 ELEV. 137.73

PART 1 - PLAN PROFILE 1:2 & 1:4 SHEET  
 10/11 & 10/12 100' X 100'

SHEET 3