

FED. ROAD DIST. NO.	STATE	W.P.S.S. DIST. NO.	FISCAL YEAR	SHEET NO.	TOTAL SHEETS
9	Vt.	181B	1936	1	49

INDEX OF SHEETS

SHEET NO.	TITLE PAGE
1	TITLE PAGE
2	TYPICAL CROSS-SECTION OF IMPROVEMENT WITH CRUSHED STONE FINE-PLACE SURFACE COURSE WITH CURB AND ASPHALT DECKS 24" & 24" AND PAVE COAT OF RETINED TAR-ITEM 24"
3	BANKING AND WIDENING TABLES
4-10	PLAN AND PROFILE SHEETS
11	STANDARD STRUCTURE SHEET 520; PIPE CULVERTS
12	" " " " 529; BOX CULVERTS
13	" " " " 530; GRADE PAIR
14	" " " " 531; BOUNDARY MARKERS
15	" " " " 540; BARRICADES, SIGNS & LIGHTS
16-49	CROSS-SECTION SHEETS

Standard Structure Sheets 520 & 529 approved by the Chief Engineer on July 11, 1935.

Standard Structure Sheet 530 approved by the Chief Engineer on Aug 25, 1935.

Standard Structure Sheet 531 approved by the Chief Engineer on July 15, 1934.

**STATE OF VERMONT
STATE HIGHWAY DEPARTMENT**

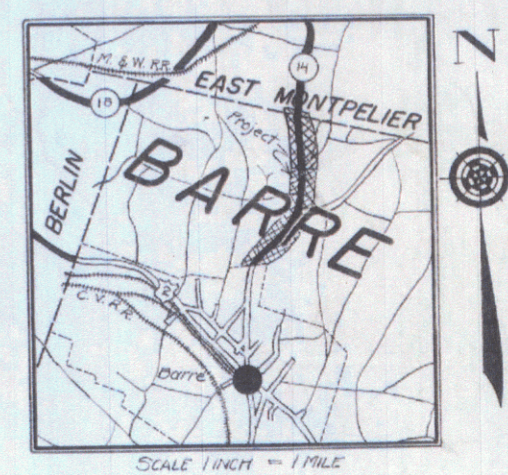
**PLAN AND PROFILE OF PROPOSED
STATE HIGHWAY**
U. S. WORKS PROGRAM STATE SECONDARY PROJECT (W.P.S.S. 181B)

BARRE TOWN-EAST MONTPELIER

BARRE - EAST MONTPELIER ROAD

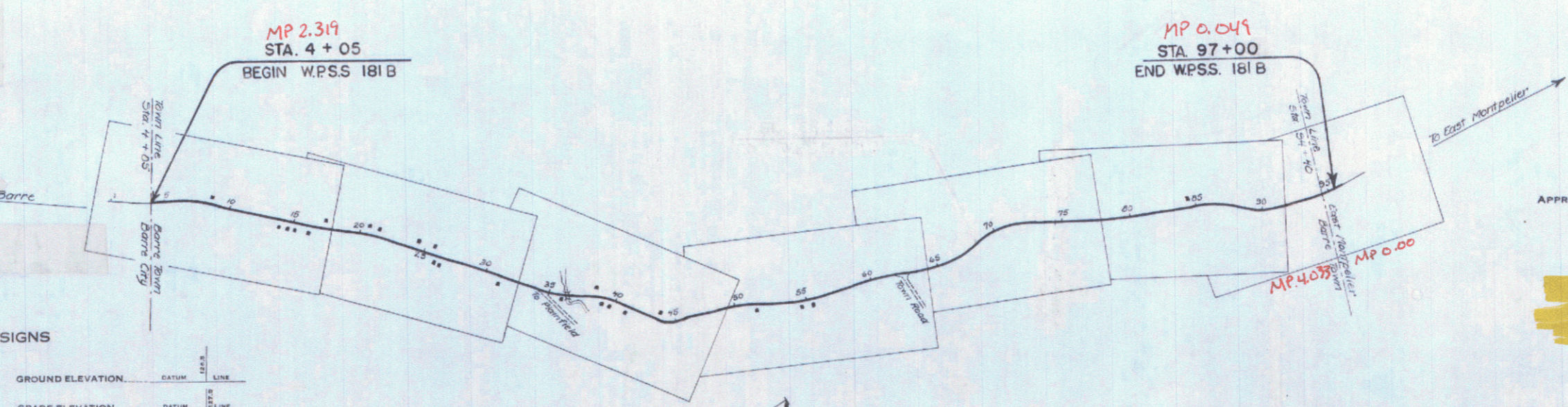
BEGINNING AT THE BARRE CITY-BARRE TOWN LINE AND EXTENDING NORTHERLY 1.756 MILES ON ROUTE 14 TO 102 FT. NORTH OF THE BARRE TOWN-EAST MONTPELIER TOWN LINE.

LENGTH OF PROJECT 9272.7 FT. = 1.756 MILES



CONVENTIONAL SIGNS

COUNTY LINE	-----
TOWN LINE	-----
FENCE LINE	-----
STONE WALL	-----
UNFENCED PROPERTY	-----
GUARD RAIL	-----
TRAVELED WAY	-----
RAILROAD	-----
RETAINING WALL	-----
CENTER LINE	-----
SURVEY LINE	-----
CULVERT	-----
DROP INLET	-----
TROLLEY POLE	-----
POWER POLE	-----
TELEPHONE POLE	-----
TREES	-----
HEDGE	-----



CONVENTIONAL SIGNS

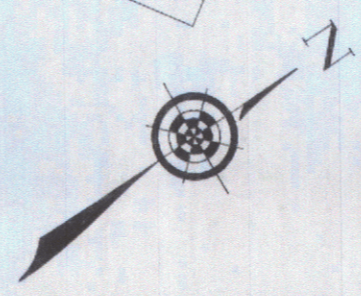
GROUND ELEVATION	DATUM	LINE
GRADE ELEVATION	DATUM	LINE

CURVE DATA

DEFLECTION ANGLE	Δ
DEGREE OF CURVE	D
RADIUS OF CURVE	R
TANGENT DISTANCE	T
LENGTH OF CURVE	L
EXTERNAL DISTANCE	E
POINT OF INTERSECTION	P. I.
POINT OF CURVE	P. C.
POINT OF TANGENT	P. T.
POINT ON TANGENT	P. O. T.

SCALES

TITLE	1" = 500'
PLAN	1" = 20'
PROFILE	1" = 30'
CROSS SECTIONS	1" = 5'



These plans are subject to such revisions as may be required by the Bureau of Public Roads or the Commissioner of Highways. Construction is to be carried on in accordance with the plans and Standard Road and Bridge Specifications of 1930, including all subsequent approved revisions and such revised specifications and special provisions as are submitted with the plans.

Attention of the contractor is called to the fact that the State Highway Board reserves the right to extend this project at the same Contract price. Said cost of extension not to exceed 25% of the amount of the Contract.

APPROVED: *January 20, 1936*
November 16, 1935
COMMISSIONER OF HIGHWAYS

SUBMITTED BY ORDER OF THE STATE HIGHWAY BOARD
Pin: COB752
Route: VT14
11/1936

RECOMMENDED _____
DISTRICT ENGINEER BUREAU OF PUBLIC ROADS

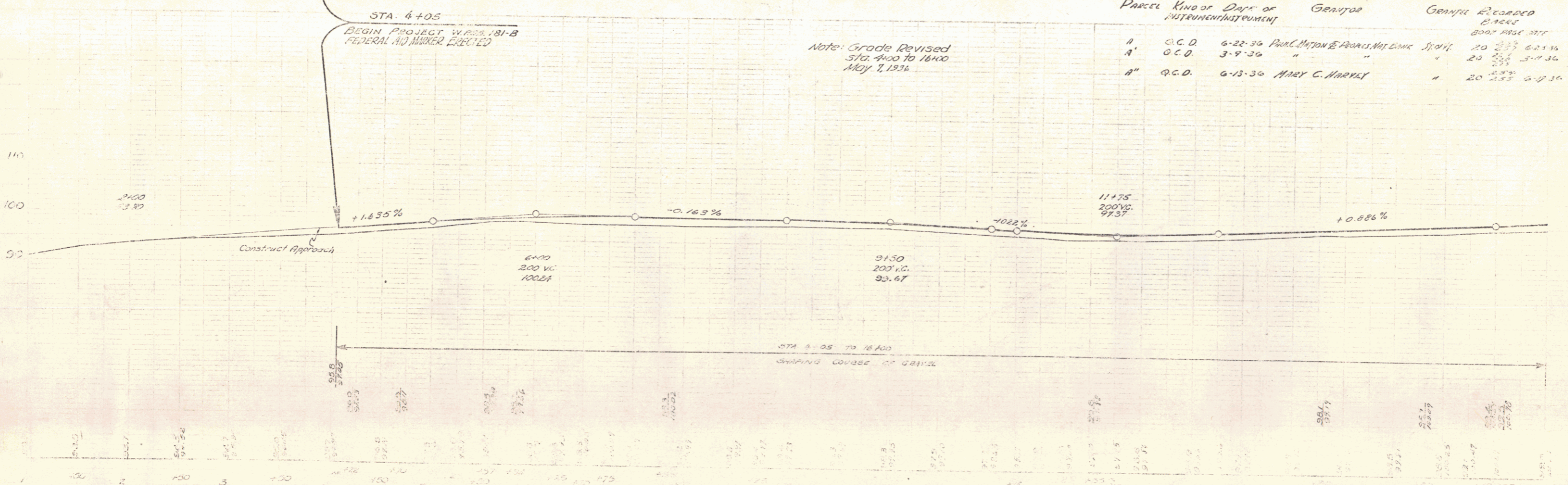
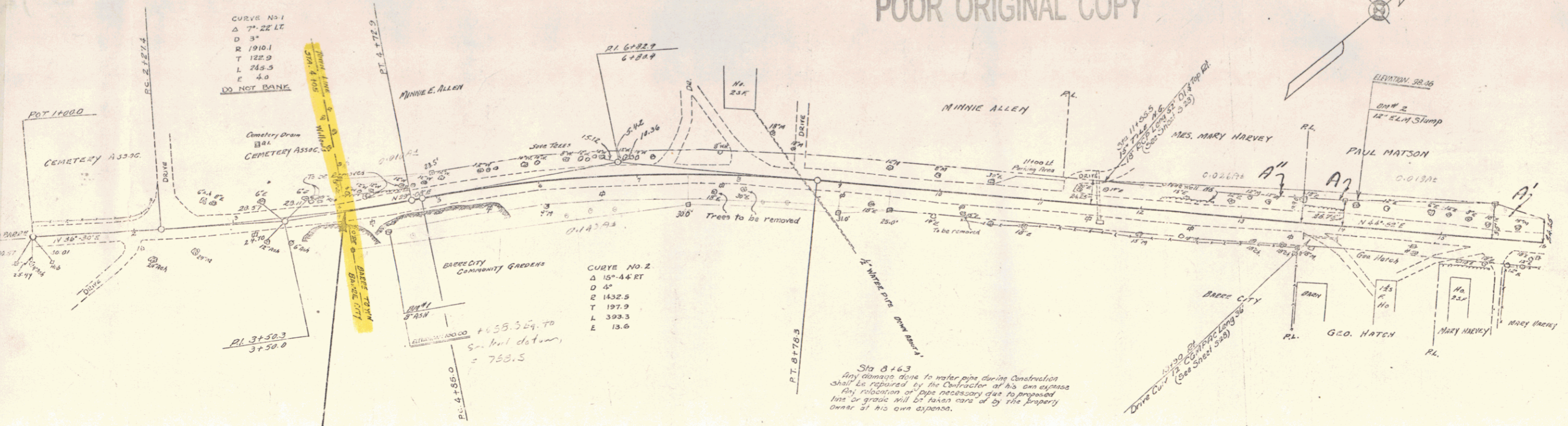
RECOMMENDED FOR APPROVAL _____
CHIEF ENGINEER BUREAU OF PUBLIC ROADS

APPROVED _____
DIRECTOR - BUREAU OF PUBLIC ROADS

Correct: *January 20, 1936*
November 16, 1935
Road Engineer

SERIES W.P.S.S. NO. 181B FILED
SHEET 1 OF 49

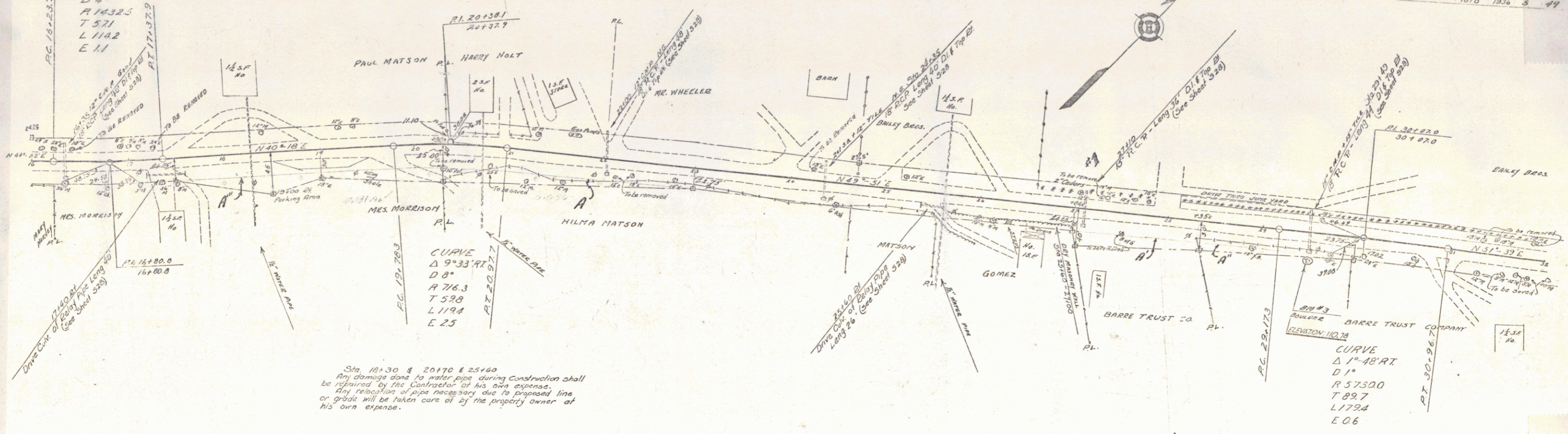
POOR ORIGINAL COPY



Profile	Kind of Data or Instrument/Instrument	Date of Genlog	Genlog	Genlog Elevation	Remarks
A	O.C.D.	6-22-36	PAUL MATSON & FRANCIS MATSON	20	2.55 6-2-36
A'	O.C.D.	3-9-36	"	20	2.54 3-7-36
A''	O.C.D.	6-13-36	MARY C. HARVEY	20	2.55 6-7-36

THE 10' GRADE IN LOT OF BUN LON, CORNER 181-B, 181-C, 181-D, 181-E, 181-F, 181-G, 181-H, 181-I, 181-J, 181-K, 181-L, 181-M, 181-N, 181-O, 181-P, 181-Q, 181-R, 181-S, 181-T, 181-U, 181-V, 181-W, 181-X, 181-Y, 181-Z, 181-AA, 181-AB, 181-AC, 181-AD, 181-AE, 181-AF, 181-AG, 181-AH, 181-AI, 181-AJ, 181-AL, 181-AM, 181-AN, 181-AO, 181-AP, 181-AQ, 181-AR, 181-AS, 181-AT, 181-AU, 181-AV, 181-AW, 181-AX, 181-AY, 181-AZ, 181-BA, 181-BB, 181-BC, 181-BD, 181-BE, 181-BF, 181-BG, 181-BH, 181-BI, 181-BJ, 181-BL, 181-BM, 181-BN, 181-BO, 181-BP, 181-BQ, 181-BR, 181-BS, 181-BT, 181-BU, 181-BV, 181-BW, 181-BX, 181-BY, 181-BZ, 181-CA, 181-CB, 181-CC, 181-CD, 181-CE, 181-CF, 181-CG, 181-CH, 181-CI, 181-CJ, 181-CL, 181-CM, 181-CN, 181-CP, 181-CQ, 181-CR, 181-CS, 181-CT, 181-CU, 181-CV, 181-CW, 181-CX, 181-CY, 181-CZ, 181-DA, 181-DB, 181-DC, 181-DD, 181-DE, 181-DF, 181-DG, 181-DH, 181-DI, 181-DJ, 181-DL, 181-DM, 181-DN, 181-DO, 181-DP, 181-DQ, 181-DR, 181-DS, 181-DT, 181-DU, 181-DV, 181-DW, 181-DX, 181-DY, 181-DZ, 181-EA, 181-EB, 181-EC, 181-ED, 181-EE, 181-EF, 181-EG, 181-EH, 181-EI, 181-EJ, 181-EL, 181-EM, 181-EN, 181-EO, 181-EP, 181-EQ, 181-ER, 181-ES, 181-ET, 181-EU, 181-EV, 181-EW, 181-EX, 181-EY, 181-EZ, 181-FA, 181-FB, 181-FC, 181-FD, 181-FE, 181-FG, 181-FH, 181-FI, 181-FJ, 181-FL, 181-FM, 181-FN, 181-FO, 181-FP, 181-FQ, 181-FR, 181-FS, 181-FT, 181-FU, 181-FV, 181-FW, 181-FX, 181-FY, 181-FZ, 181-GA, 181-GB, 181-GC, 181-GD, 181-GE, 181-GF, 181-GG, 181-GH, 181-GI, 181-GJ, 181-GL, 181-GM, 181-GN, 181-GO, 181-GP, 181-GQ, 181-GR, 181-GS, 181-GT, 181-GU, 181-GV, 181-GW, 181-GX, 181-GY, 181-GZ, 181-HA, 181-HB, 181-HC, 181-HD, 181-HE, 181-HF, 181-HG, 181-HH, 181-HI, 181-HJ, 181-HL, 181-HM, 181-HN, 181-HO, 181-HP, 181-HQ, 181-HR, 181-HS, 181-HT, 181-HU, 181-HV, 181-HW, 181-HX, 181-HY, 181-HZ, 181-IA, 181-IB, 181-IC, 181-ID, 181-IE, 181-IF, 181-IG, 181-IH, 181-II, 181-IL, 181-IM, 181-IN, 181-IO, 181-IP, 181-IQ, 181-IR, 181-IS, 181-IT, 181-IU, 181-IV, 181-IW, 181-IX, 181-IY, 181-IZ, 181-JA, 181-JB, 181-JC, 181-JD, 181-JE, 181-JF, 181-JG, 181-JH, 181-JI, 181-JJ, 181-JL, 181-JM, 181-JN, 181-JO, 181-JP, 181-JQ, 181-JR, 181-JS, 181-JT, 181-JU, 181-JV, 181-JW, 181-JX, 181-JY, 181-JZ, 181-KA, 181-KB, 181-KC, 181-KD, 181-KE, 181-KF, 181-KG, 181-KH, 181-KI, 181-KJ, 181-KL, 181-KM, 181-KN, 181-KO, 181-KP, 181-KQ, 181-KR, 181-KS, 181-KT, 181-KU, 181-KV, 181-KW, 181-KX, 181-KY, 181-KZ, 181-LA, 181-LB, 181-LC, 181-LD, 181-LE, 181-LF, 181-LG, 181-LH, 181-LI, 181-LJ, 181-LL, 181-LM, 181-LN, 181-LO, 181-LP, 181-LQ, 181-LR, 181-LS, 181-LT, 181-LU, 181-LV, 181-LW, 181-LX, 181-LY, 181-LZ, 181-MA, 181-MB, 181-MC, 181-MD, 181-ME, 181-MF, 181-MG, 181-MH, 181-MI, 181-MJ, 181-ML, 181-MM, 181-MN, 181-MO, 181-MP, 181-MQ, 181-MR, 181-MS, 181-MT, 181-MU, 181-MV, 181-MW, 181-MX, 181-MY, 181-MZ, 181-NA, 181-NB, 181-NC, 181-ND, 181-NE, 181-NF, 181-NG, 181-NH, 181-NI, 181-NJ, 181-NL, 181-NM, 181-NO, 181-NP, 181-NQ, 181-NR, 181-NS, 181-NT, 181-NU, 181-NV, 181-NW, 181-NX, 181-NY, 181-NZ, 181-OA, 181-OB, 181-OC, 181-OD, 181-OE, 181-OF, 181-OG, 181-OH, 181-OI, 181-OJ, 181-OL, 181-OM, 181-ON, 181-OO, 181-OP, 181-OQ, 181-OR, 181-OS, 181-OT, 181-OU, 181-OV, 181-OW, 181-OX, 181-OY, 181-OZ, 181-PA, 181-PB, 181-PC, 181-PD, 181-PE, 181-PF, 181-PG, 181-PH, 181-PI, 181-PJ, 181-PL, 181-PM, 181-PN, 181-PO, 181-PP, 181-PQ, 181-PR, 181-PS, 181-PT, 181-PU, 181-PV, 181-PW, 181-PX, 181-PY, 181-PZ, 181-QA, 181-QB, 181-QC, 181-QD, 181-QE, 181-QF, 181-QG, 181-QH, 181-QI, 181-QJ, 181-QL, 181-QM, 181-QN, 181-QO, 181-QP, 181-QL, 181-QM, 181-QN, 181-QO, 181-QP, 181-QR, 181-QS, 181-QU, 181-QV, 181-QW, 181-QX, 181-QY, 181-QZ, 181-RA, 181-RB, 181-RC, 181-RD, 181-RE, 181-RF, 181-RG, 181-RH, 181-RI, 181-RJ, 181-RL, 181-RM, 181-RN, 181-RO, 181-RP, 181-RQ, 181-RR, 181-RS, 181-RT, 181-RU, 181-RV, 181-RW, 181-RX, 181-RY, 181-RZ, 181-SA, 181-SB, 181-SC, 181-SD, 181-SE, 181-SF, 181-SG, 181-SH, 181-SI, 181-SJ, 181-SL, 181-SM, 181-SN, 181-SO, 181-SP, 181-SQ, 181-SR, 181-SS, 181-ST, 181-SU, 181-SV, 181-SW, 181-SX, 181-SY, 181-SZ, 181-TA, 181-TB, 181-TC, 181-TD, 181-TE, 181-TF, 181-TG, 181-TH, 181-TI, 181-TJ, 181-TL, 181-TM, 181-TN, 181-TO, 181-TP, 181-TQ, 181-TR, 181-TS, 181-TU, 181-TV, 181-TW, 181-TX, 181-TY, 181-TZ, 181-UA, 181-UB, 181-UC, 181-UD, 181-UE, 181-UF, 181-UG, 181-UH, 181-UI, 181-UJ, 181-UL, 181-UM, 181-UN, 181-UO, 181-UP, 181-UQ, 181-UR, 181-US, 181-UT, 181-UV, 181-UW, 181-UX, 181-UY, 181-UZ, 181-VA, 181-VB, 181-VC, 181-VD, 181-VE, 181-VF, 181-VG, 181-VH, 181-VI, 181-VJ, 181-VL, 181-VM, 181-VN, 181-VO, 181-VP, 181-VQ, 181-VR, 181-VS, 181-VT, 181-VU, 181-VV, 181-VW, 181-VX, 181-VY, 181-VZ, 181-WA, 181-WB, 181-WC, 181-WD, 181-WE, 181-WF, 181-WG, 181-WH, 181-WI, 181-WJ, 181-WL, 181-WM, 181-WN, 181-WO, 181-WP, 181-WQ, 181-WR, 181-WS, 181-WT, 181-WU, 181-WV, 181-WW, 181-WX, 181-WY, 181-WZ, 181-XA, 181-XB, 181-XC, 181-XD, 181-XE, 181-XF, 181-XG, 181-XH, 181-XI, 181-XJ, 181-XL, 181-XM, 181-XN, 181-XO, 181-XP, 181-XQ, 181-XR, 181-XS, 181-XT, 181-XU, 181-XV, 181-XW, 181-XX, 181-XY, 181-XZ, 181-YA, 181-YB, 181-YC, 181-YD, 181-YE, 181-YF, 181-YG, 181-YH, 181-YI, 181-YJ, 181-YL, 181-YM, 181-YN, 181-YO, 181-YP, 181-YQ, 181-YR, 181-YS, 181-YT, 181-YU, 181-YV, 181-YW, 181-YX, 181-YY, 181-YZ, 181-ZA, 181-ZB, 181-ZC, 181-ZD, 181-ZE, 181-ZF, 181-ZG, 181-ZH, 181-ZI, 181-ZJ, 181-ZL, 181-ZM, 181-ZN, 181-ZO, 181-ZP, 181-ZQ, 181-ZR, 181-ZS, 181-ZT, 181-ZU, 181-ZV, 181-ZW, 181-ZX, 181-ZY, 181-ZZ

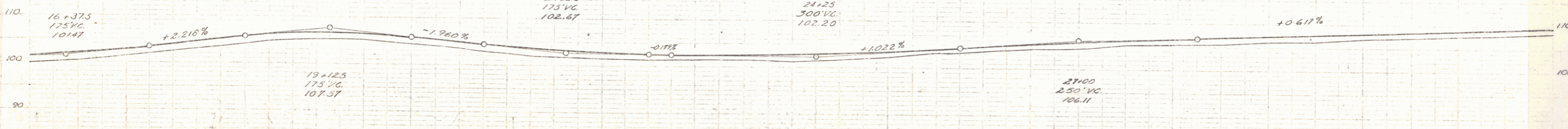
CURVE
Δ 4°34.1'
D 4°
R 1432.5
T 571
L 1142
E 1.1



Sta. 18+30 & 20+70 & 25+60
Any damage done to water pipe during construction shall be repaired by the Contractor at his own expense. Any relocation of pipe necessary due to proposed line or grade will be taken care of by the property owner at his own expense.

Note: Grade Revised
Sta. 16+00 to 32+00
May 2, 1936

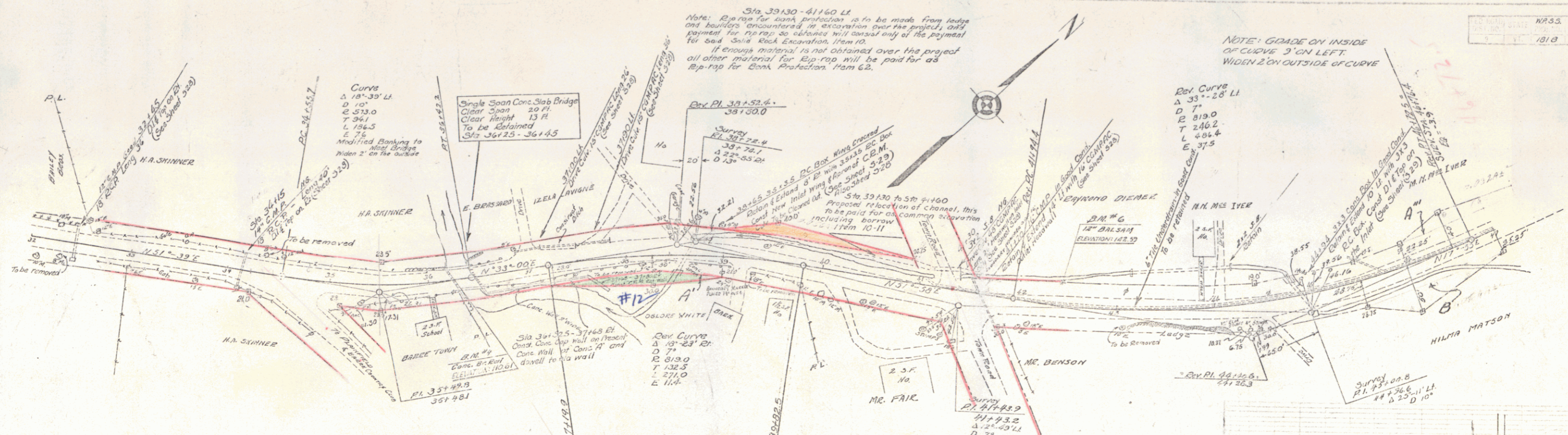
Parcel	Kind of	Date of	Grantor	Grantee	Recorded	Book	Page	Date
88C	O.C.D.	3-0-36	Hilma Matson & Paul Matson	Barre Trust Co.	20	234	3-4-36	
88A	O.C.D.	7-2-36	Barre Trust Co.	"	20	235	7-4-36	
88B	O.C.D.	2-18-36	Florence H. Morrison	"	20	233	2-27-36	
88D	O.C.D.	2-14-36	Barre Trust Co.	"	20	232	2-27-36	



STA. 16+00 TO 32+00
SHAPING COURSE OF GRAVEL

Station	Elevation	Station	Elevation	Station	Elevation	Station	Elevation
16+00	101.47	17+00	102.20	18+00	102.20	19+00	102.20
16+25	101.47	17+25	102.20	18+25	102.20	19+25	102.20
16+50	101.47	17+50	102.20	18+50	102.20	19+50	102.20
16+75	101.47	17+75	102.20	18+75	102.20	19+75	102.20
17+00	101.47	18+00	102.20	19+00	102.20	20+00	102.20
17+25	101.47	18+25	102.20	19+25	102.20	20+25	102.20
17+50	101.47	18+50	102.20	19+50	102.20	20+50	102.20
17+75	101.47	18+75	102.20	19+75	102.20	21+00	102.20
18+00	101.47	19+00	102.20	20+00	102.20	21+25	102.20
18+25	101.47	19+25	102.20	20+25	102.20	21+50	102.20
18+50	101.47	19+50	102.20	20+50	102.20	22+00	102.20
18+75	101.47	19+75	102.20	20+75	102.20	22+25	102.20
19+00	101.47	20+00	102.20	21+00	102.20	22+50	102.20
19+25	101.47	20+25	102.20	21+25	102.20	23+00	102.20
19+50	101.47	20+50	102.20	21+50	102.20	23+25	102.20
19+75	101.47	20+75	102.20	22+00	102.20	23+50	102.20
20+00	101.47	21+00	102.20	22+25	102.20	24+00	102.20
20+25	101.47	21+25	102.20	22+50	102.20	24+25	102.20
20+50	101.47	21+50	102.20	23+00	102.20	24+50	102.20
20+75	101.47	22+00	102.20	23+25	102.20	25+00	102.20
21+00	101.47	22+25	102.20	23+50	102.20	25+25	102.20
21+25	101.47	22+50	102.20	24+00	102.20	25+50	102.20
21+50	101.47	23+00	102.20	24+25	102.20	26+00	102.20
21+75	101.47	23+25	102.20	24+50	102.20	26+25	102.20
22+00	101.47	23+50	102.20	25+00	102.20	26+50	102.20
22+25	101.47	24+00	102.20	25+25	102.20	27+00	102.20
22+50	101.47	24+25	102.20	25+50	102.20	27+25	102.20
22+75	101.47	24+50	102.20	26+00	102.20	27+50	102.20
23+00	101.47	25+00	102.20	26+25	102.20	28+00	102.20
23+25	101.47	25+25	102.20	26+50	102.20	28+25	102.20
23+50	101.47	25+50	102.20	27+00	102.20	28+50	102.20
23+75	101.47	26+00	102.20	27+25	102.20	29+00	102.20
24+00	101.47	26+25	102.20	27+50	102.20	29+25	102.20
24+25	101.47	26+50	102.20	28+00	102.20	29+50	102.20
24+50	101.47	27+00	102.20	28+25	102.20	30+00	102.20
24+75	101.47	27+25	102.20	28+50	102.20	30+25	102.20
25+00	101.47	27+50	102.20	29+00	102.20	30+50	102.20
25+25	101.47	28+00	102.20	29+25	102.20	31+00	102.20
25+50	101.47	28+25	102.20	29+50	102.20	31+25	102.20
25+75	101.47	28+50	102.20	30+00	102.20	31+50	102.20
26+00	101.47	29+00	102.20	30+25	102.20	32+00	102.20

B.M. NO. 3: PAINT-SPOT ON BOULDER: 19 FT. RIGHT OF STA. 29+50; ELEVATION: 110.78

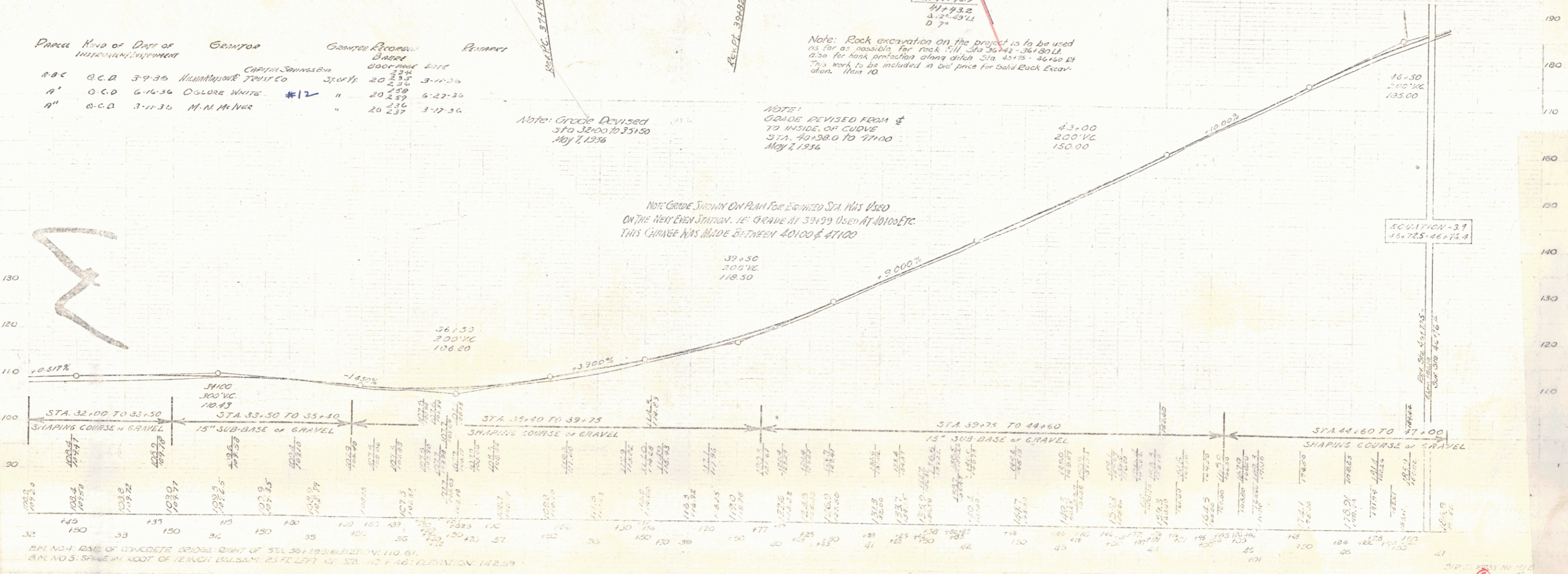


Parcel	Kind of Data or Instrument	Date of Instrument	Owner	Corner	Corner Elevation	Remarks
A.B.C.	O.C.D.	3-9-36	H.A. SHINNER	Capitol	20 237.5	3-11-36
A'	O.C.D.	6-16-36	OLDFIELD WHITE	#12	20 237.5	6-22-36
A''	O.C.D.	3-11-36	M. M. M. IVER	"	20 237	3-17-36

Note: Grade Revised STA 32+00 TO 35+50 May 7, 1936

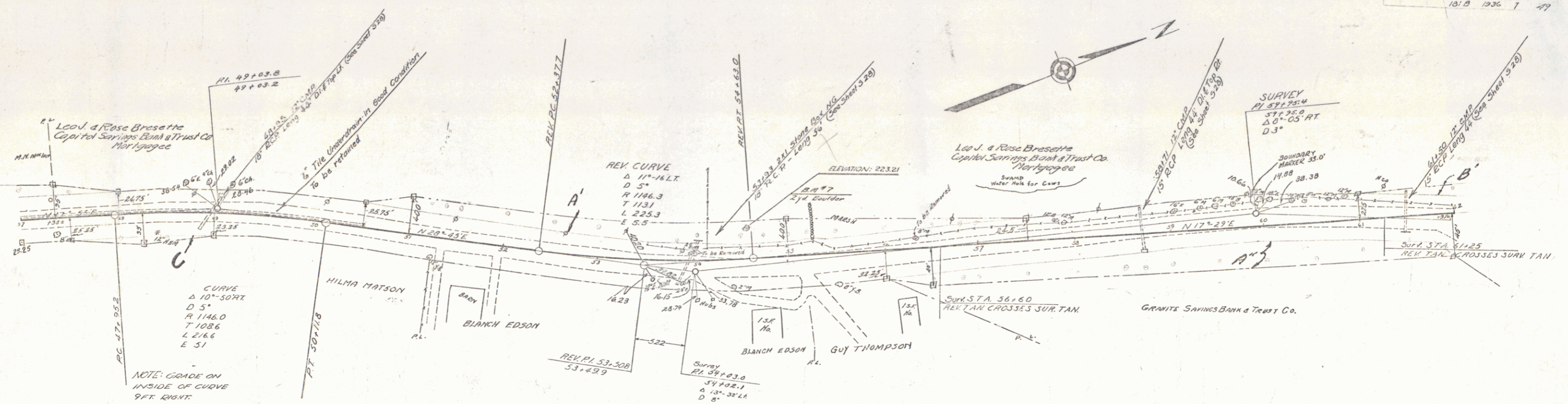
Note: GRADE REVISED FROM 4 TO INSIDE OF CURVE STA. 40+50.0 TO 47+00 May 7, 1936

Note: Grade Shown on Plan for Existing Sta. Was Used on the Next Even Station. i.e. Grade at 33+00 Used at 40+00 etc. This Change Was Made Between 40+00 & 41+00



BM NO. 1: DATE OF CONCRETE BRIDGE: RIGHT OF STA. 30+75 TO ELEVATION: 110.61.
BM NO. 5: SAME IN FOOT OF 12 INCH BALSAM: 25 FEET LEFT OF STA. 42+46: ELEVATION: 142.59

ELEVATION - 37
45+72.5 = 46+16.4

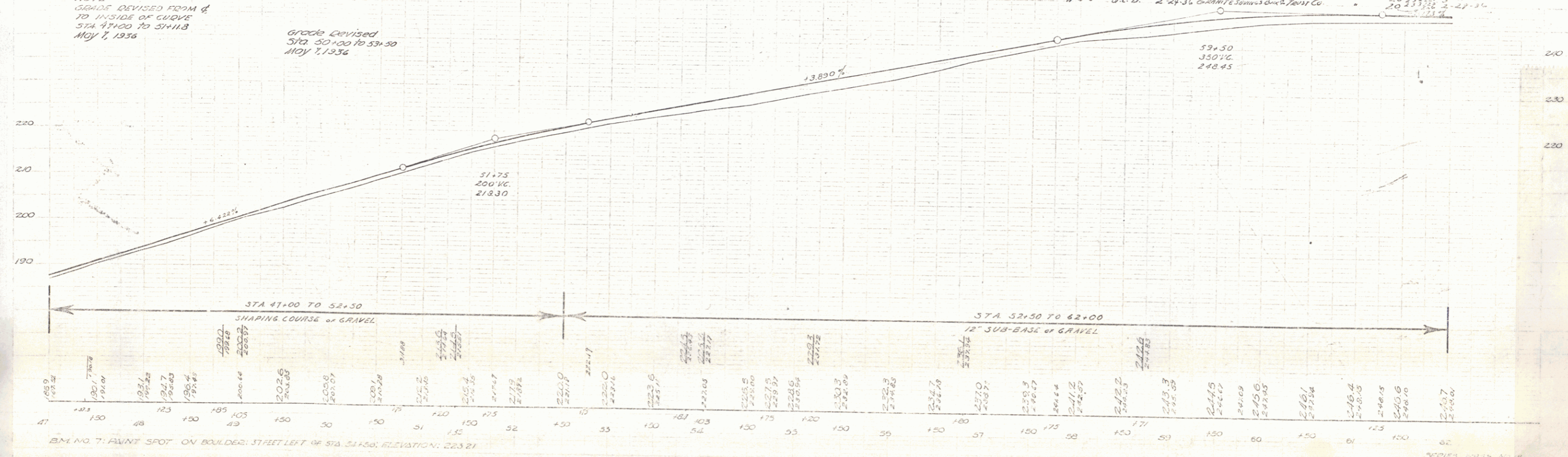


NOTE: GRADE ON INSIDE OF CURVE 9 FT RIGHT

NOTE: GRADE DEVIATED FROM Δ TO INSIDE OF CURVE STA 47+00 TO 51+18 MAY 7, 1936

Grade Deviated STA 50+00 TO 53+50 NOV 7, 1936

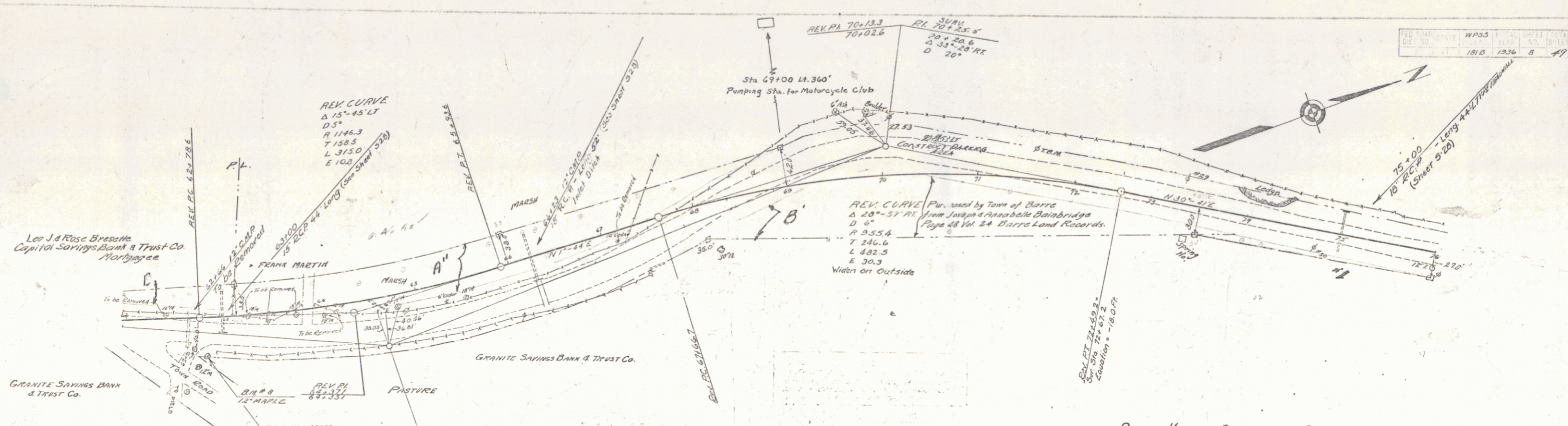
Parcel	Kind of	Date of	Owner	Grantee	Recorded	Remarks
A-B-C	O.C.D.	3-9-36	Leo J. & Rose Brosette Capital Savings Bank & Trust Co.	Storff	20336	3-11-36
A-B-C	O.C.D.	3-9-36	Leo J. & Rose Brosette Capital Savings Bank & Trust Co.	"	20337	3-11-36
A-B-C	O.C.D.	2-27-36	Leo J. & Rose Brosette Capital Savings Bank & Trust Co.	"	20338	3-29-36



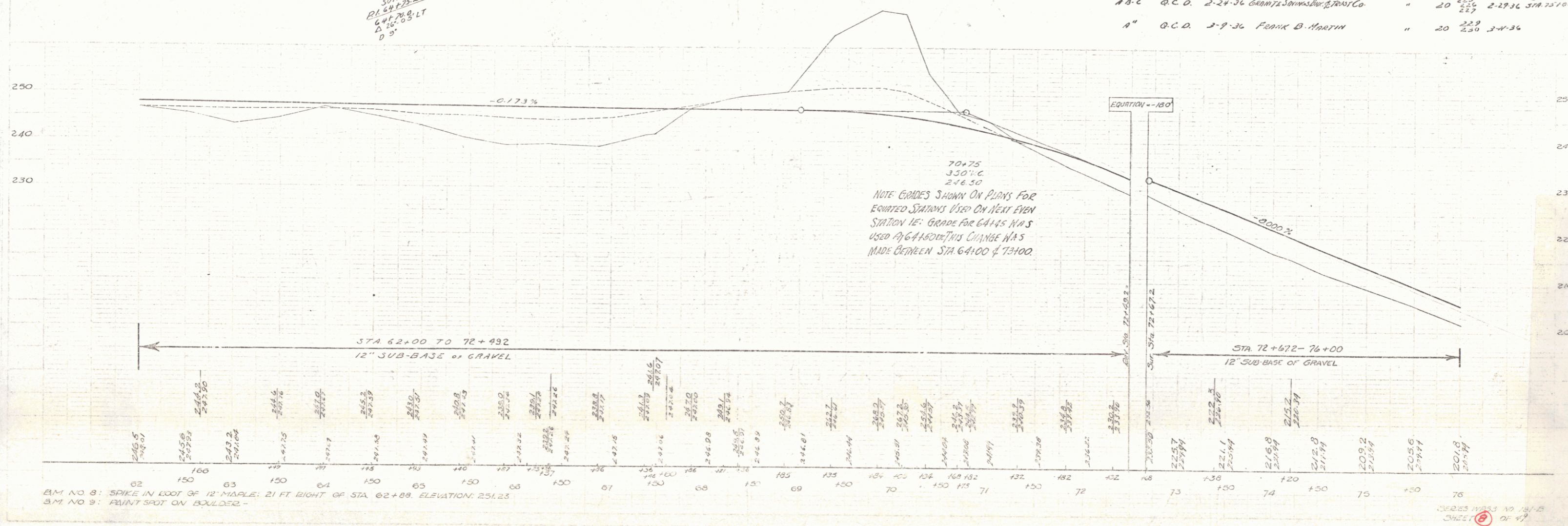
B.M. NO. 7: AVINE SPOT ON BOULDER; 27 FEET LEFT OF STA 51+56; ELEVATION: 223.21

REVISIONS
 1. 11/15/35
 2. 11/15/35
 3. 11/15/35
 4. 11/15/35
 5. 11/15/35
 6. 11/15/35
 7. 11/15/35
 8. 11/15/35
 9. 11/15/35
 10. 11/15/35
 11. 11/15/35
 12. 11/15/35
 13. 11/15/35
 14. 11/15/35
 15. 11/15/35
 16. 11/15/35
 17. 11/15/35
 18. 11/15/35
 19. 11/15/35
 20. 11/15/35
 21. 11/15/35
 22. 11/15/35
 23. 11/15/35
 24. 11/15/35
 25. 11/15/35
 26. 11/15/35
 27. 11/15/35
 28. 11/15/35
 29. 11/15/35
 30. 11/15/35
 31. 11/15/35
 32. 11/15/35
 33. 11/15/35
 34. 11/15/35
 35. 11/15/35
 36. 11/15/35
 37. 11/15/35
 38. 11/15/35
 39. 11/15/35
 40. 11/15/35
 41. 11/15/35
 42. 11/15/35
 43. 11/15/35
 44. 11/15/35
 45. 11/15/35
 46. 11/15/35
 47. 11/15/35
 48. 11/15/35
 49. 11/15/35
 50. 11/15/35
 51. 11/15/35
 52. 11/15/35
 53. 11/15/35
 54. 11/15/35
 55. 11/15/35
 56. 11/15/35
 57. 11/15/35
 58. 11/15/35
 59. 11/15/35
 60. 11/15/35
 61. 11/15/35
 62. 11/15/35
 63. 11/15/35
 64. 11/15/35
 65. 11/15/35
 66. 11/15/35
 67. 11/15/35
 68. 11/15/35
 69. 11/15/35
 70. 11/15/35
 71. 11/15/35
 72. 11/15/35
 73. 11/15/35
 74. 11/15/35
 75. 11/15/35
 76. 11/15/35
 77. 11/15/35
 78. 11/15/35
 79. 11/15/35
 80. 11/15/35
 81. 11/15/35
 82. 11/15/35
 83. 11/15/35
 84. 11/15/35
 85. 11/15/35
 86. 11/15/35
 87. 11/15/35
 88. 11/15/35
 89. 11/15/35
 90. 11/15/35
 91. 11/15/35
 92. 11/15/35
 93. 11/15/35
 94. 11/15/35
 95. 11/15/35
 96. 11/15/35
 97. 11/15/35
 98. 11/15/35
 99. 11/15/35
 100. 11/15/35

9-25-35
 E. B. HARTMAN

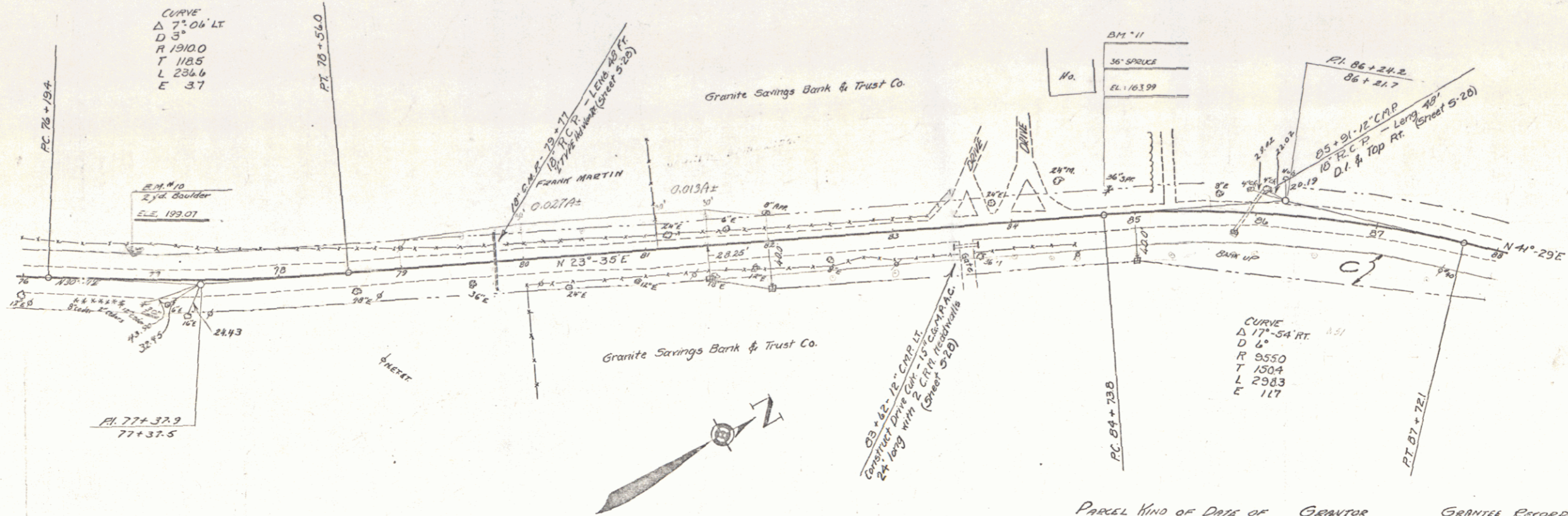


Parcel	Kind of Date of Instrument	Date of Instrument	Grantee	Grantee Record	Grantee Book Page	Grantee Date	Comments
A-B	O.C.D.	3-9-36	Leo J. & Rose Brasca	Capital Savings Bank & Trust Co.	20 234	3-11-36	
A-B-C	O.C.D.	2-24-36	Frank B. Martin	Granite Savings Bank & Trust Co.	20 233	2-29-36	Vol. 1
A"	O.C.D.	3-9-36	Frank B. Martin	"	20 233	3-4-36	Vol. 1

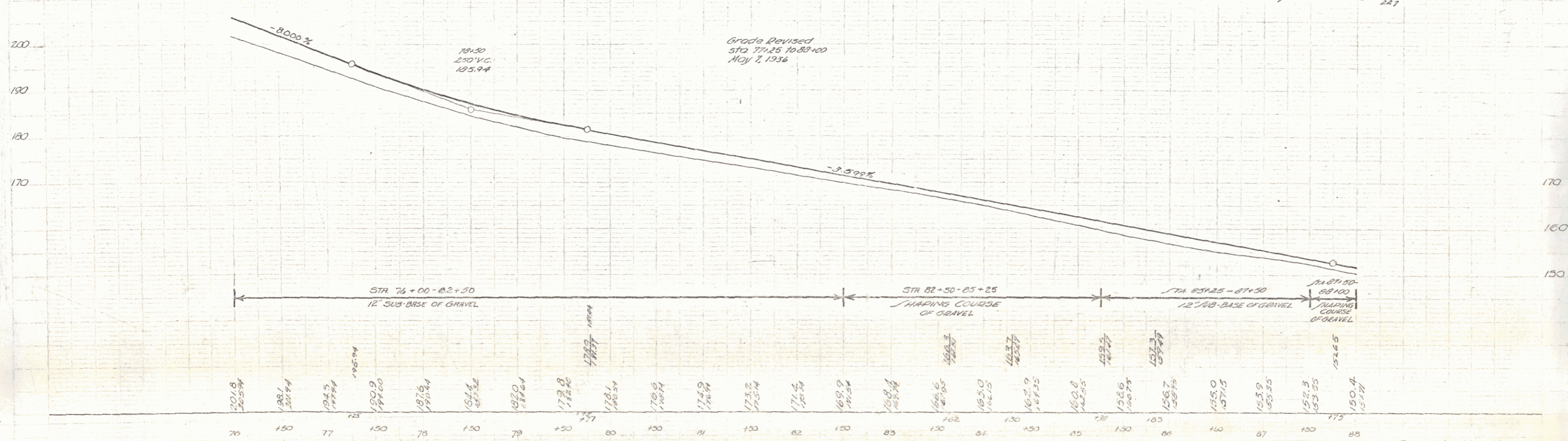


BM NO 8: SPIKE IN FOOT OF 12" MAPLE; 21 FT. RIGHT OF STA. 62+89. ELEVATION: 251.23
 BM NO 9: Faint spot on boulder

SHEET NO. 181-B
 OF 17



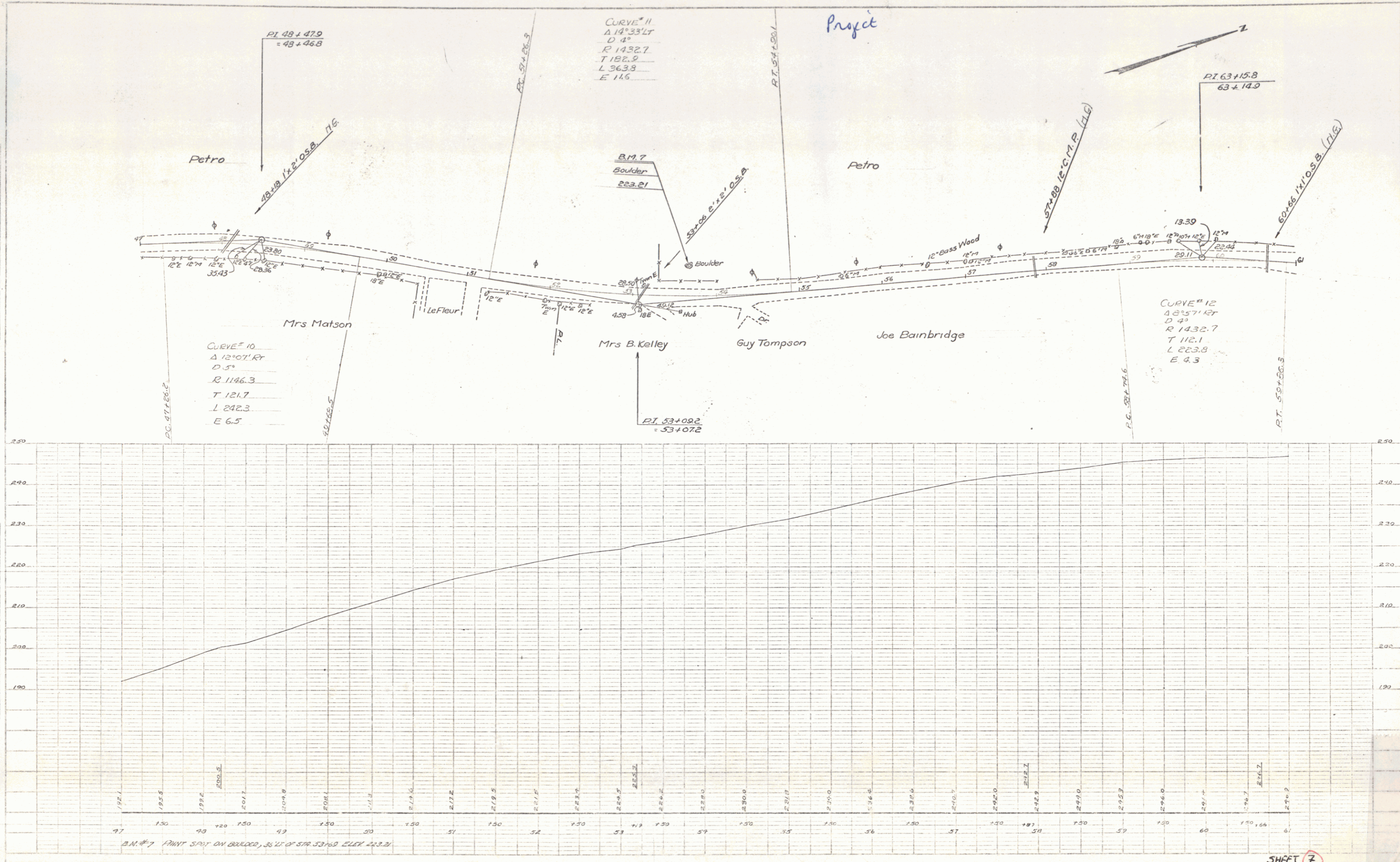
PARCEL	KIND OF DATE OF INSTRUMENT	GRANTOR	GRANTEE	RECORDED BOOKS
A B C	Q.C.D.	2-24-36	GRANITE SAVINGS BANK TRUST CO.	225
			STOTT	226
				227



B.M. NO. 10: SPOT ON BOULDER 18" LT. STA. 76+84. ELEVATION: 195.07
 B.M. NO. 11: NAIL IN ROOT OF 36" SPURGE 19" LT. STA. 84+77. ELEVATION: 163.99.

PLAN
 PROJECT: Petro
 DRAWN BY: [Name]
 CHECKED BY: [Name]
 DATE: [Date]

PROFILE
 APPROVED: [Signature]
 DATE: [Date]

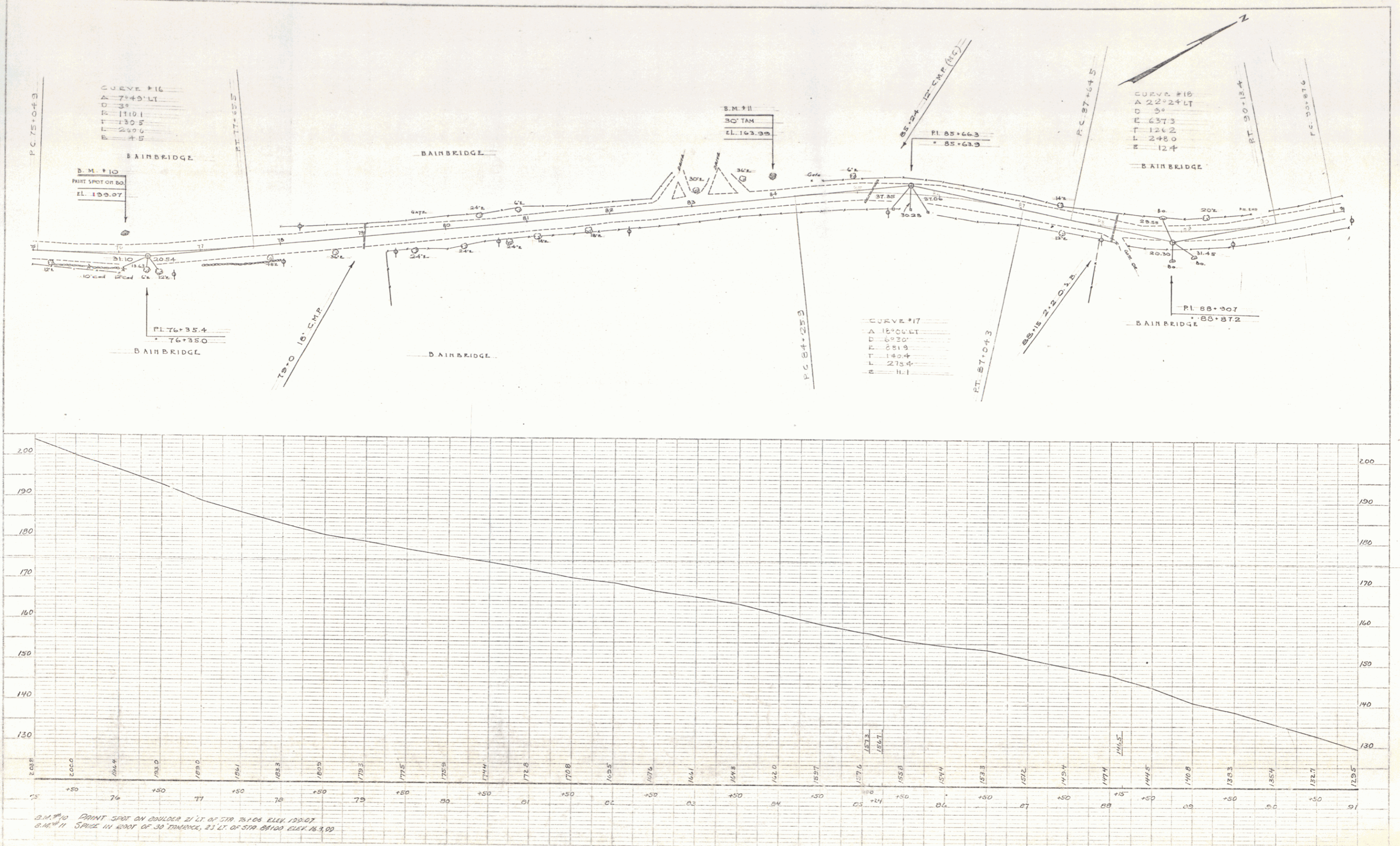


SHEET 7

9

PLUM
 DRAWN BY: NADOLSKI 8/24
 DATE: 8/24
 CHECKED BY: D. W. CASCHL 8/24
 TRACED

PROFILE
 DRAWN BY: NADOLSKI 8/24
 DATE: 8/24
 CHECKED BY: D. W. CASCHL 8/24
 TRACED



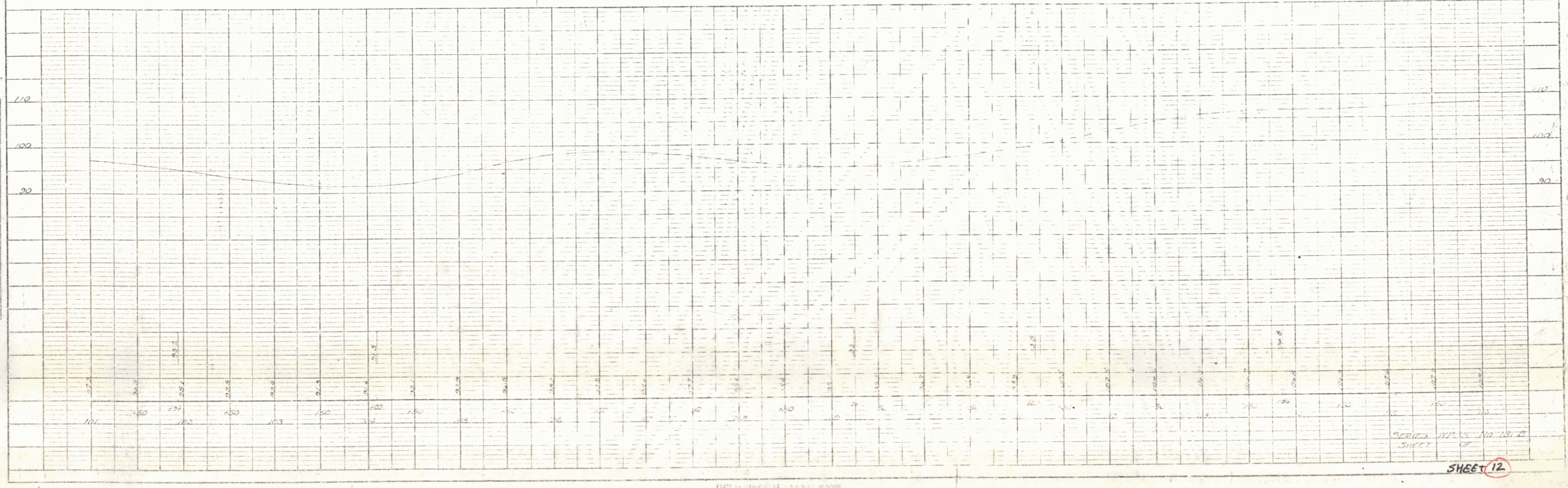
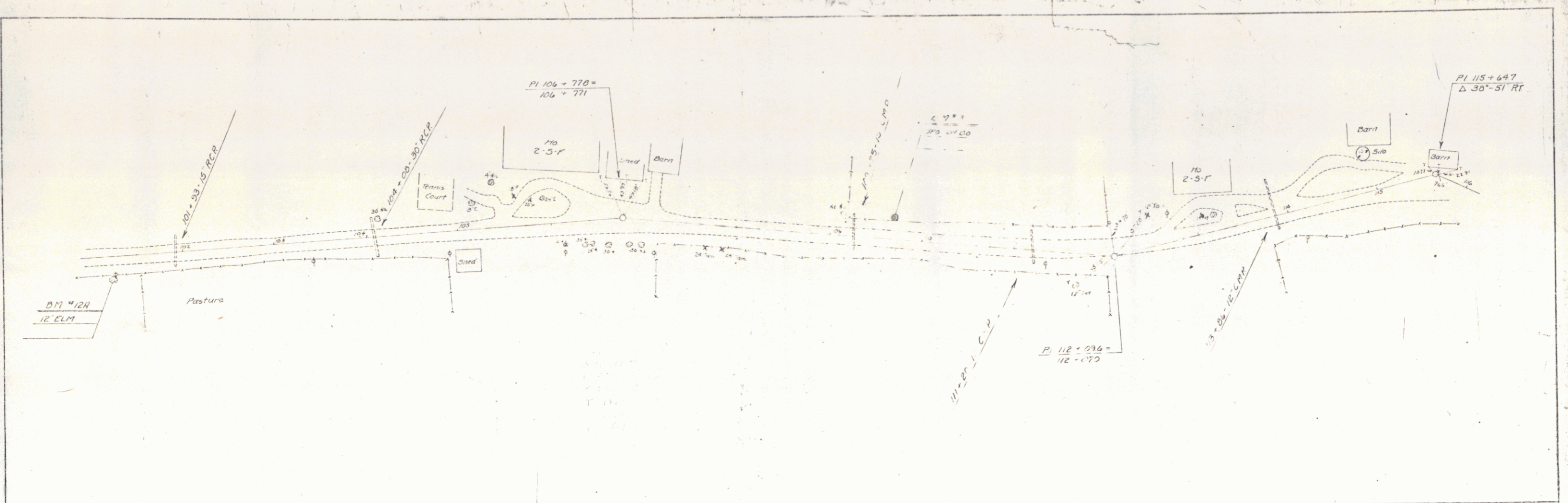
B.M. #10 POINT SPOT ON SHOULDER 21' LT OF STA 76+35.4 ELEV. 155.07
 B.M. #11 SPRUCE IN ROOT OF 30' TRUNK, 23' LT. OF STA 81+00 ELEV. 163.98

PLATE 1 - PLAN PROFILE OF P.A. & E. TRACED
 1954

SHEET 9

PLAN
 DATE: 1942
 DRAWN BY: [Name]
 CHECKED BY: [Name]
 PROJECT: [Name]
 SHEET NO.: 12

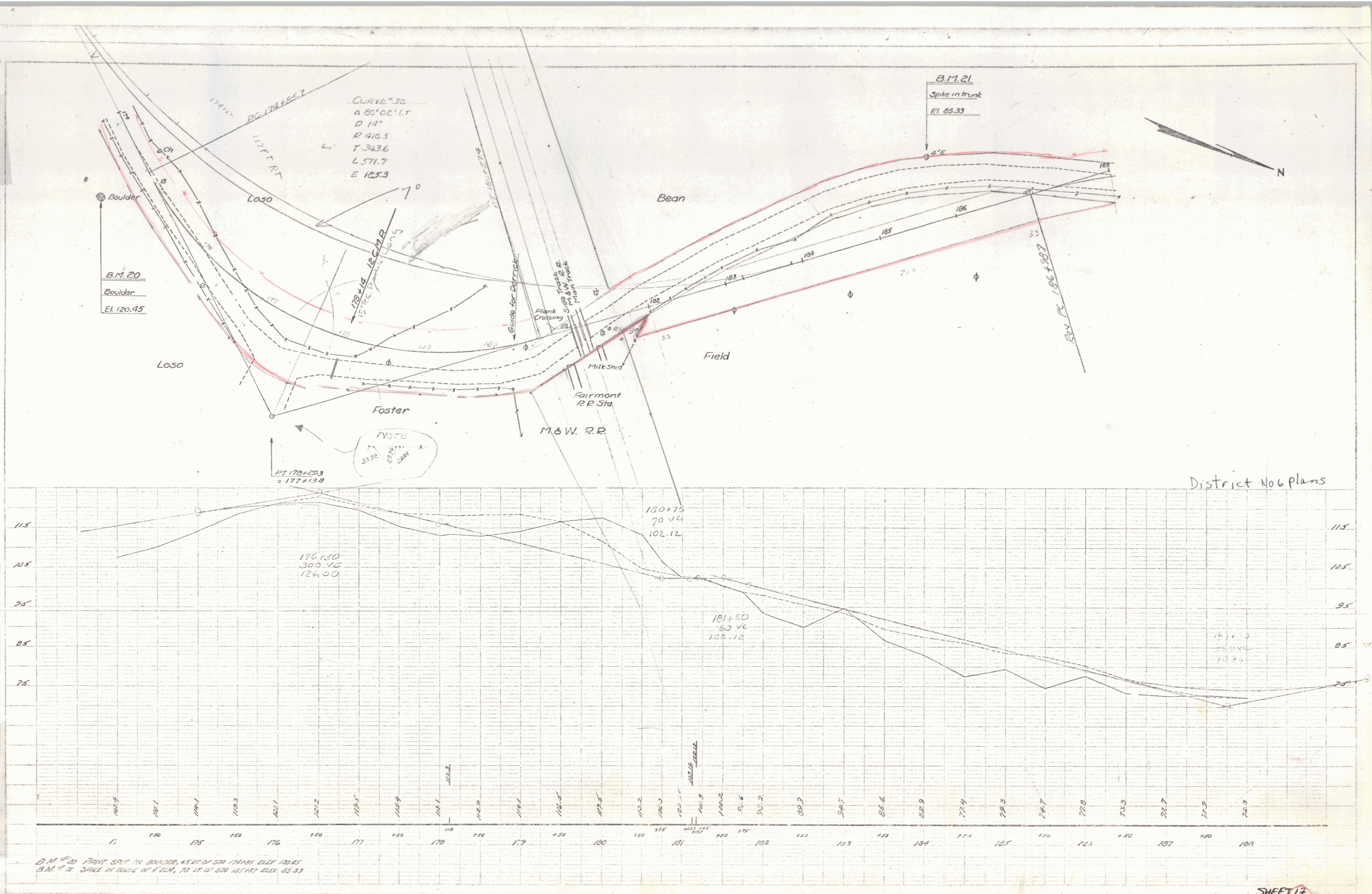
FILE NO.: [Number]
 DATE: [Date]
 DRAWN BY: [Name]
 CHECKED BY: [Name]
 PROJECT: [Name]
 SHEET NO.: 12



SERIES: [Number]
 SHEET: 12

PLAN
 PROJECT: LANTARACHE
 DRAWN BY: LANTARACHE
 CHECKED BY: LANTARACHE
 DATE: 1915

PROJECT: LANTARACHE
 DRAWN BY: LANTARACHE
 CHECKED BY: LANTARACHE
 DATE: 1915



B.M. 20 POINT SET ON BOULDER, 45 FT. OF SIDE FROM ELEV. 120.45
 B.M. 21 SPIKE IN TRUNK OF B.M., 70 FT. OF SIDE FROM ELEV. 65.33

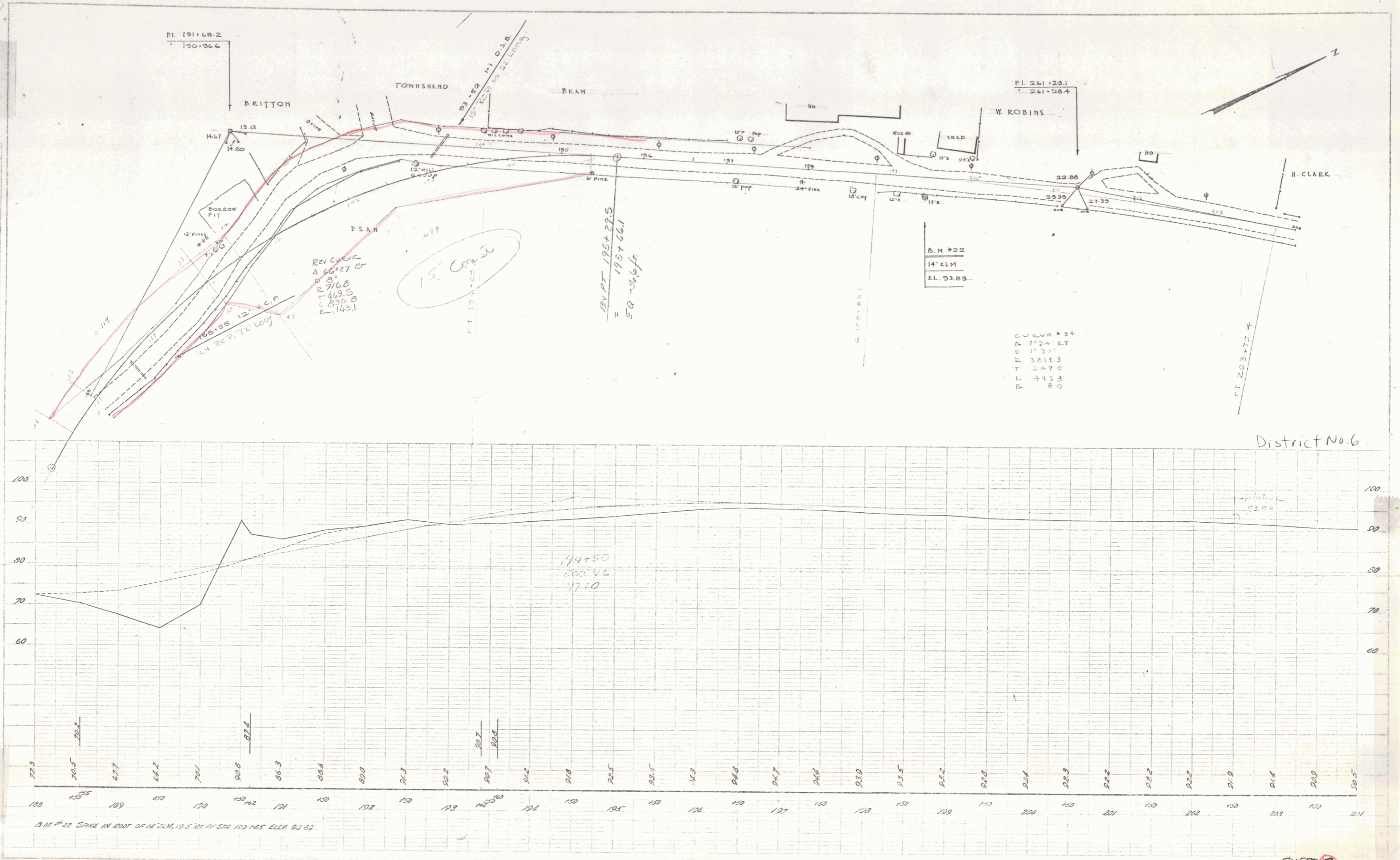
District No. 6 Plans

SHEET 17

19

PLAN
 DRAWN BY: NADOLSKI
 CHECKED BY: LAMARCA
 DATE: 8/24/54
 PROJECT: BRITTON
 SHEET: 20

PROPOSED
 GRADE
 DATE: 8/24/54



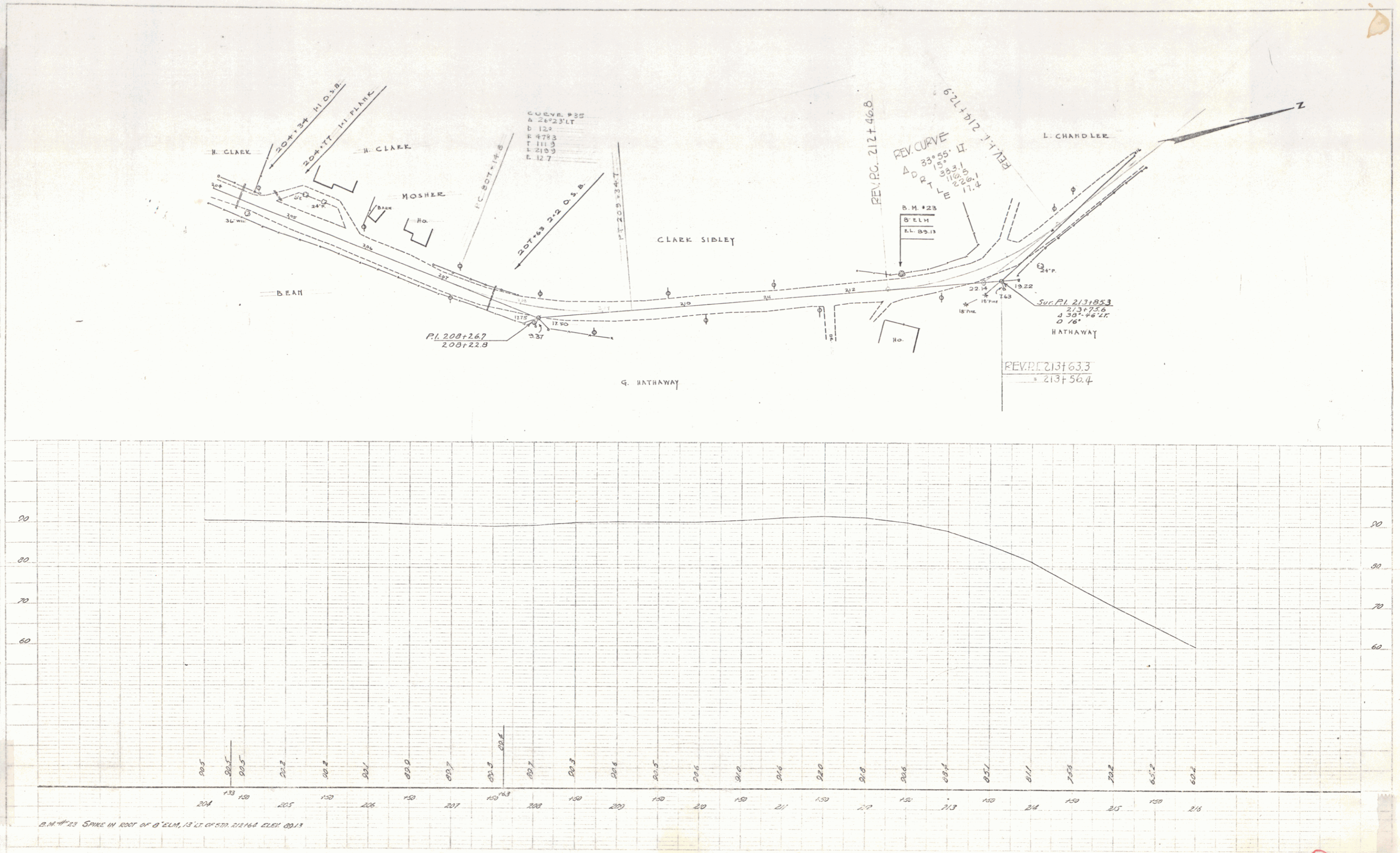
District No. 6

SHEET 20

20

FIELD BOOK
 DATE: 8/24
 MAP: 1000
 PROJECT: 1000
 DRAWN BY: D. MASCHI
 CHECKED BY:

PROJECT: 1000
 DATE: 8/24
 DRAWN BY: D. MASCHI
 CHECKED BY:



SHEET 19

