

INDEX OF SHEETS
 SHEET NO. 1 TITLE PAGE
 2 TYPICAL CROSS-SECTION OF IMPROVEMENT 3-12
 3 PLAN AND PROFILE STA 107+00 TO 117+00
 4-6 BRIDGE STA 113+50
 7-9 CROSS SECTIONS

STATE OF VERMONT
 STATE HIGHWAY DEPARTMENT

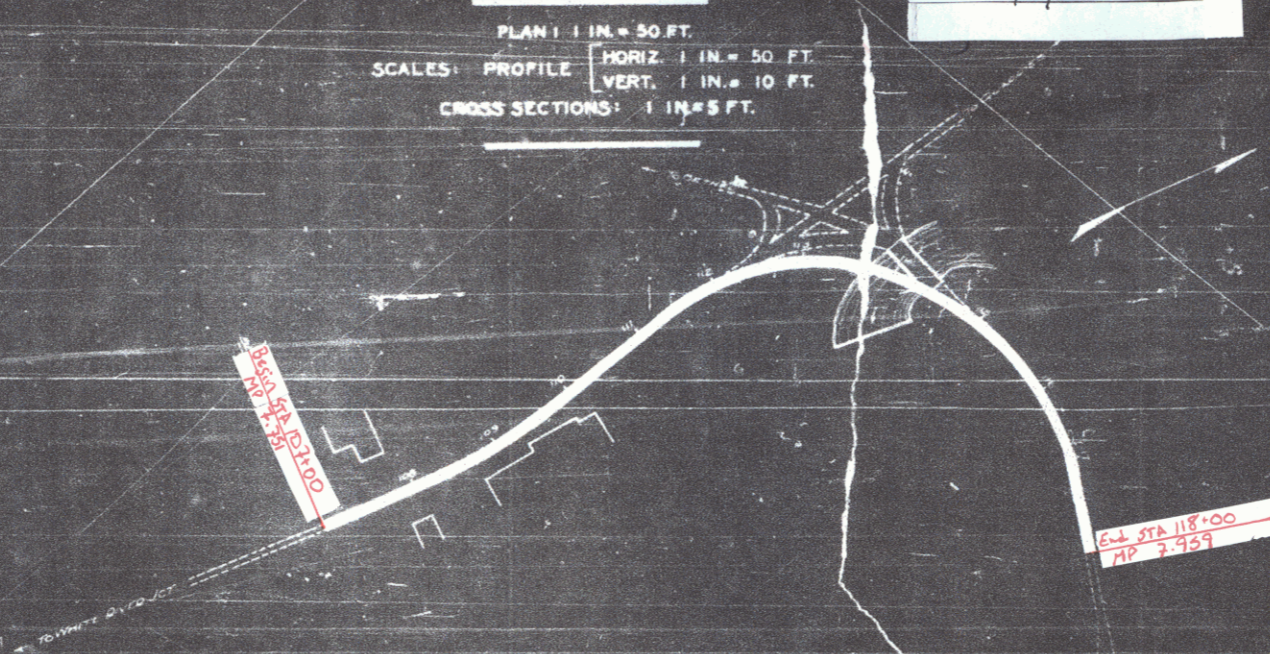
PLAN AND PROFILE OF PROPOSED
 STATE HIGHWAY
 FEDERAL AID PROJECT

TOWN OF ROYALTON
 SPAULDING BRIDGE

Pin # 00R748
 Project F80A
 Route VT14
 1/1/1926



PLAN: 1 IN. = 50 FT.
 PROFILE: HORIZ. 1 IN. = 50 FT.
 VERT. 1 IN. = 10 FT.
 CROSS SECTIONS: 1 IN. = 5 FT.



PROPOSED PLANS
 NOVEMBER 3, 1925
 C. H. G.

ROYALTON HIGHWAY DIVISION
 TOWN FILE
 PERMANENT
 Concrete Beam
 Free Bridge of Prof. S. Knight
 to be Replaced by R.C.C. 11/1/26
 Spaulding Bridge
 VT14

CONVENTIONAL SIGNS

GROUND ELEVATION	DATE	UNIT
GRADE ELEVATION	DATE	UNIT
CURVE DATA		
DEFLECTION ANGLE	Δ	
DEGREE OF CURVE	D	
RADIUS OF CURVE	R	
TANGENT DISTANCE	T	
LENGTH OF CURVE	L	
EXTERNAL DISTANCE	E	
POINT OF INTERSECTION P.I.		
POINT OF CURVE P.C.		
POINT OF TANGENT P.T.		

APPROVED

SUBMITTED BY _____

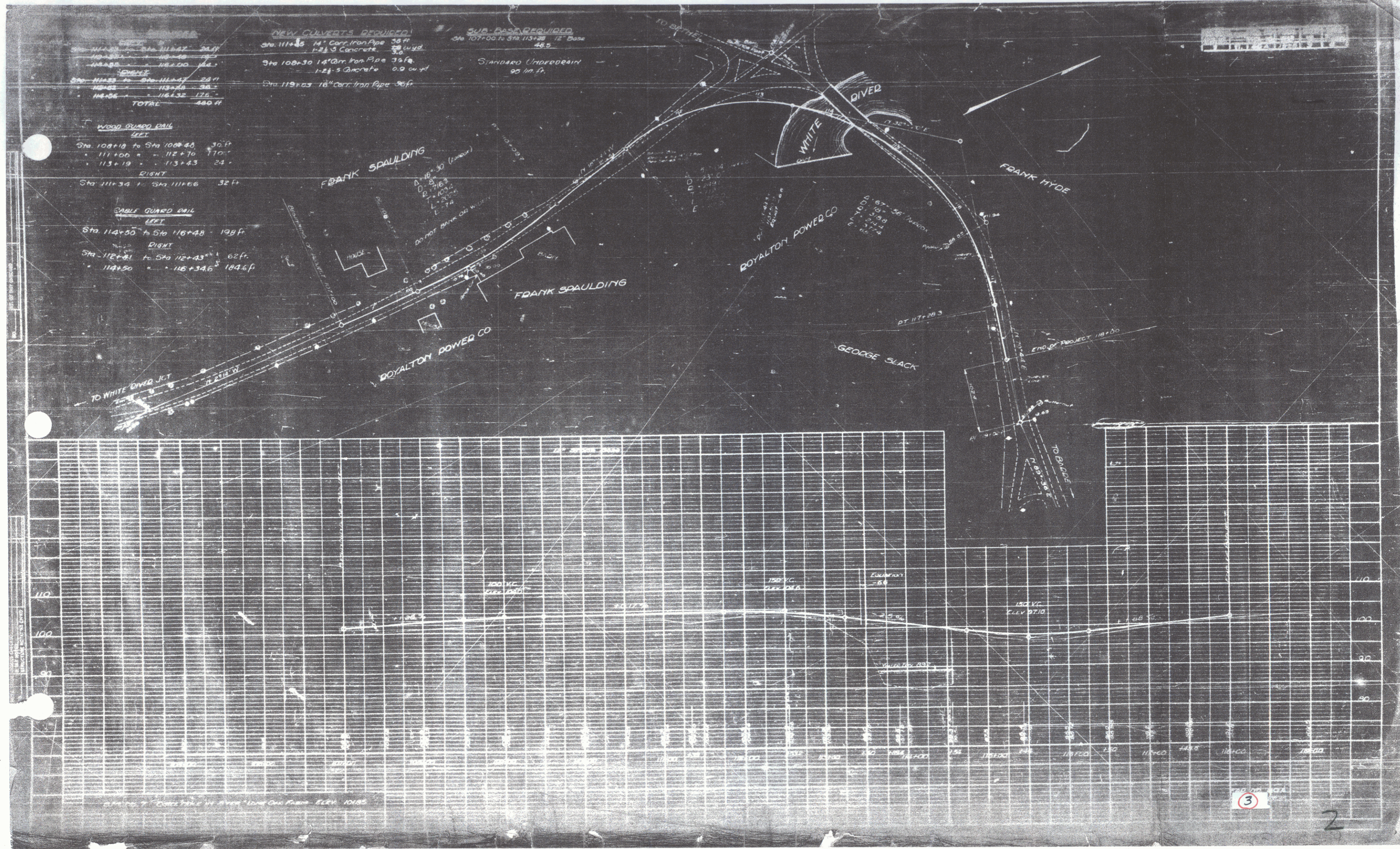
RECOMMENDED FOR APPROVAL

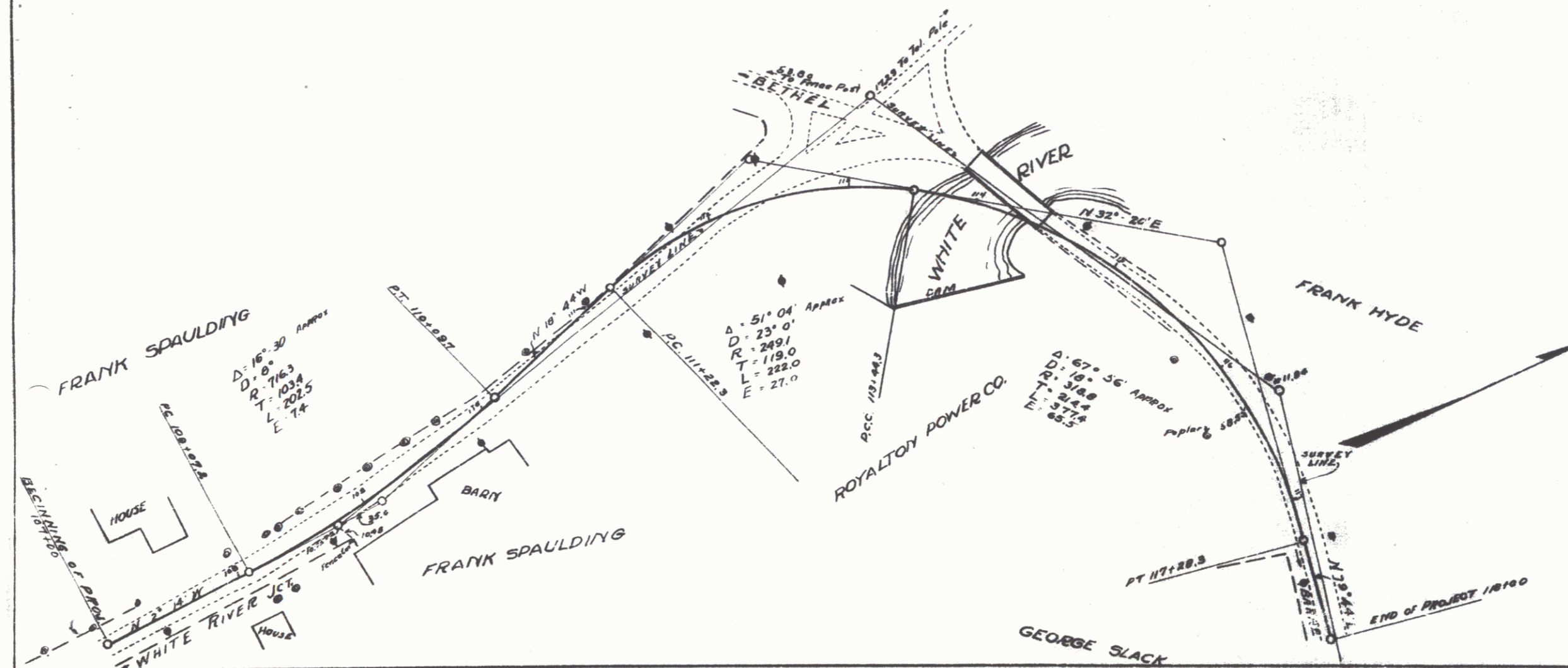
CHIEF ENGINEER

APPROVED

DIRECTOR - BUREAU OF PUBLIC ROADS

SERIES F. NON-AFILED
 SHEET 1 OF 3



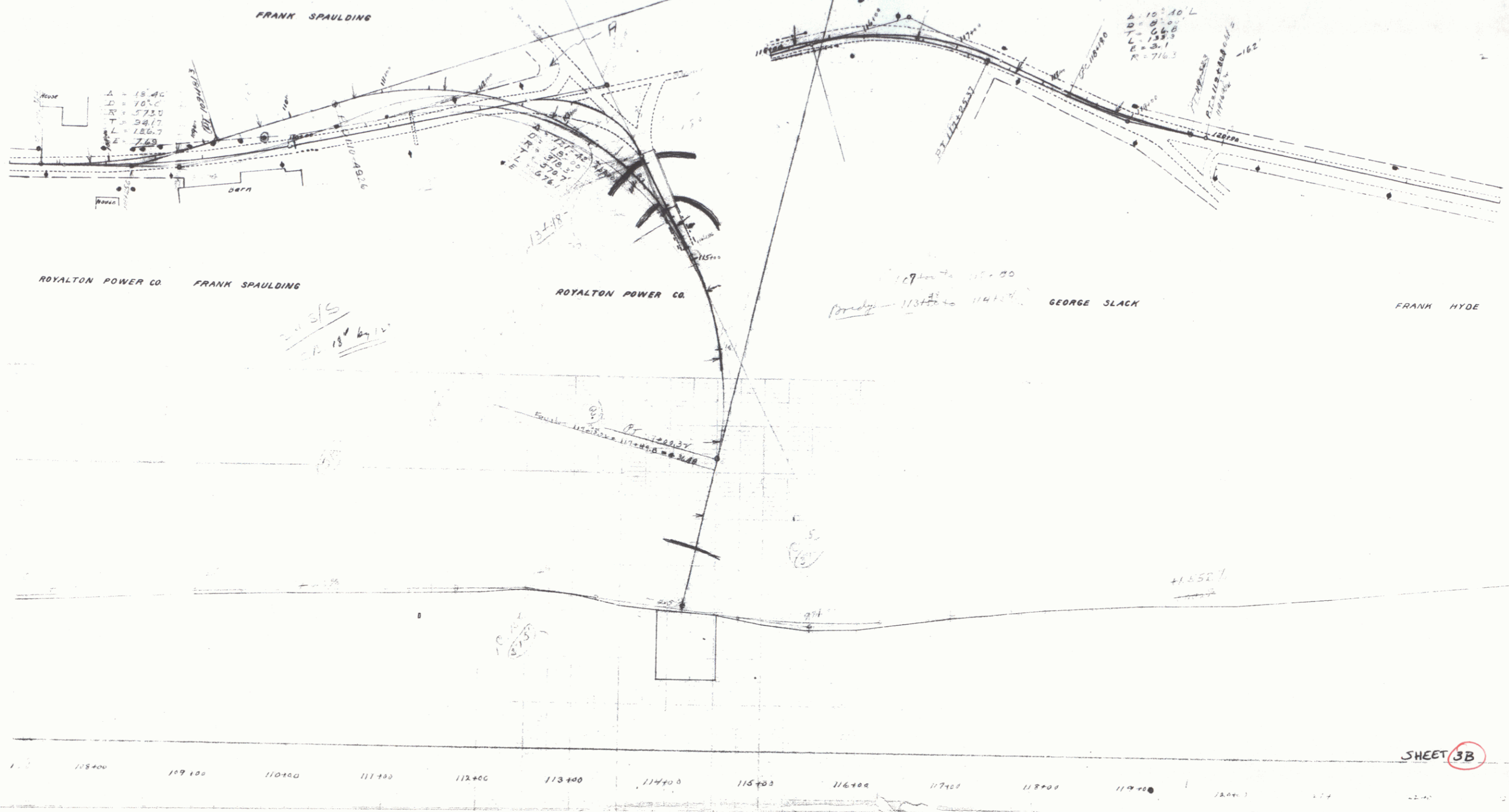


SHEET 3A

POOR ORIGINAL COPY

FRANK SPAULDING

FRANK HYDE



SHEET 3B

4