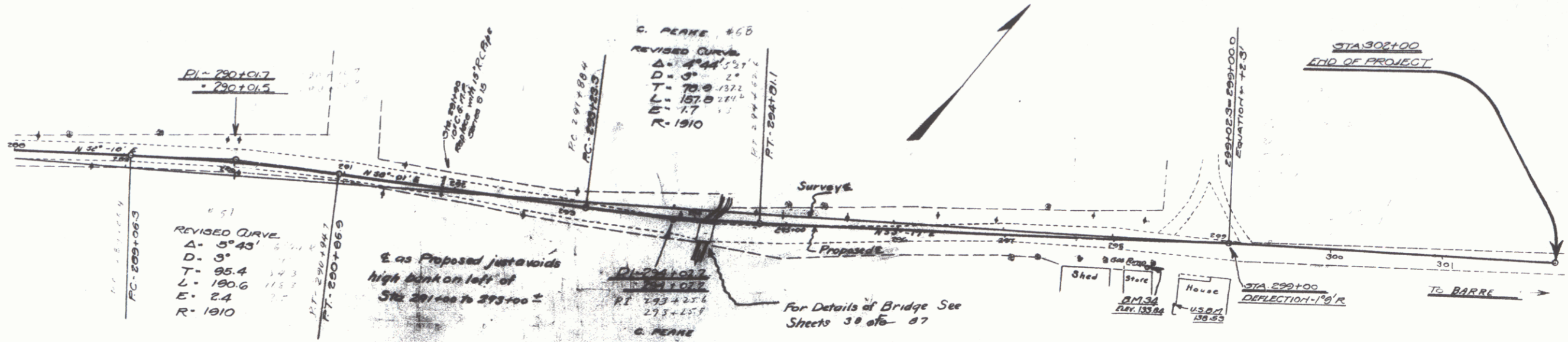


NEW CULVERTS REQUIRED
 STA 291+90- 15' REIN. CONCRETE PIPE 30' LONG
 CONCRETE CLASS 20 (4-8" x 19 cu yds)
 REINF. STEEL - 33 lbs

FIELD, ROAD, STATICAL, AND
 TYPICAL ROADWAY DESIGN
 1957



REVISED CURVE
 $\Delta = 5^{\circ}43'$
 $D = 3''$
 $T = 95.4$
 $L = 190.6$
 $E = 2.4$
 $R = 1910$

C. PERKE #68
 REVISED CURVE
 $\Delta = 4^{\circ}44'$
 $D = 3''$
 $T = 79.9$
 $L = 157.8$
 $E = 1.7$
 $R = 1910$

Use Proposed justavoids
 high bank on left of
 Sta 291+00 to 293+00

For Details of Bridge See
 Sheets 38 of 67

