

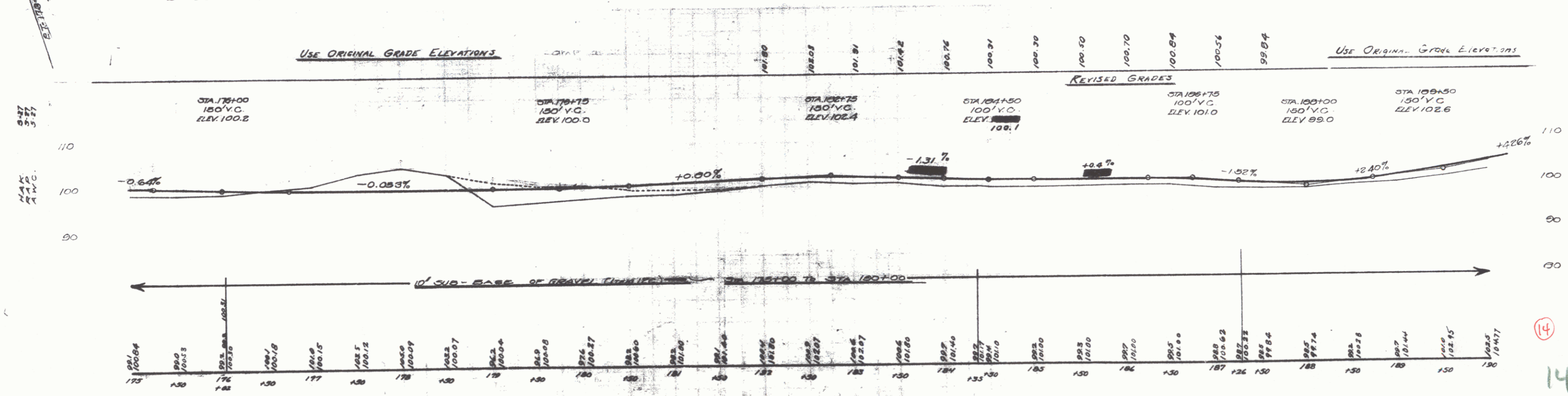
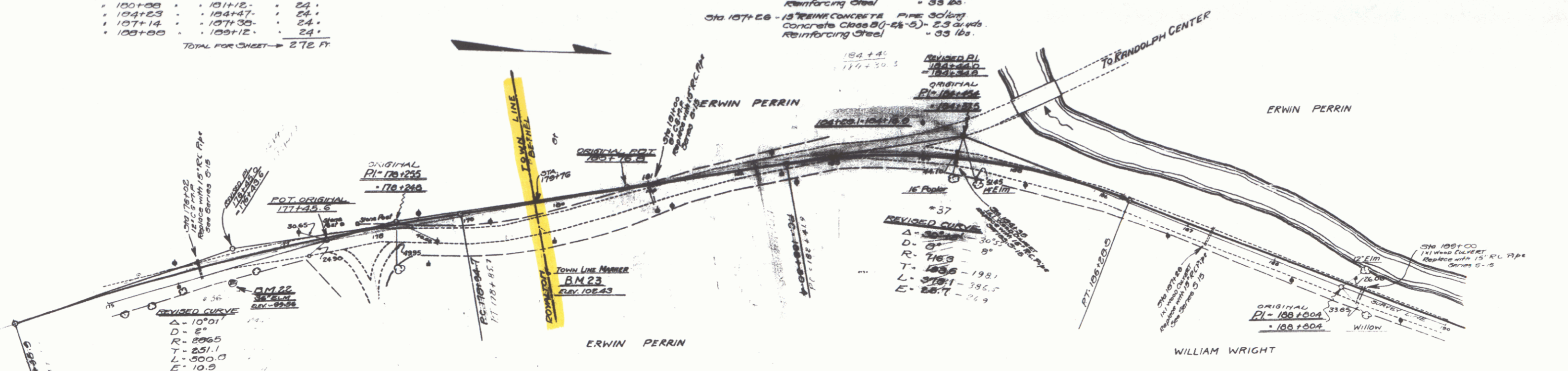
**WOOD GUARD RAIL REQUIRED**  
 LEFT  
 STA 180+89 TO STA 181+12 - LENGTH 24 FT  
 \* 181+00 \* 181+20 \* 20 \*  
 \* 184+23 \* 184+47 \* 24 \*  
 \* 187+14 \* 187+38 \* 24 \*  
 RIGHT  
 STA 175+00 TO STA 176+14 - LENGTH 24 FT  
 \* 180+08 \* 181+12 \* 24 \*  
 \* 184+23 \* 184+47 \* 24 \*  
 \* 187+14 \* 187+38 \* 24 \*  
 \* 189+00 \* 189+12 \* 24 \*  
 TOTAL FOR SHEET - 272 FT

**CABLE GUARD RAIL REQUIRED**  
 LEFT  
 STA 175+00 TO STA 177+28 - LENGTH 228 FT  
 \* 178+20 \* 178+24 \* 104 \*  
 \* 188+08 \* 190+00 \* 112 \*  
 TOTAL FOR SHEET - 444 FT

**NEW CULVERTS REQUIRED**  
 STA 176+02 - 15" REINFORCED CONCRETE PIPE 30' LONG  
 Concrete Class B (1-2 1/2 - 5) - 1.8 cu yds  
 Reinforcing Steel - 33 lbs  
 STA 181+00 - 15" REINFORCED CONCRETE PIPE 20' LONG  
 Concrete Class B (1-2 1/2 - 5) - 1.6 cu yds  
 Reinforcing Steel - 33 lbs  
 STA 184+35 - 15" REINFORCED CONCRETE PIPE 34' LONG  
 Concrete Class B (1-2 1/2 - 5) - 2.3 cu yds  
 Reinforcing Steel - 33 lbs  
 STA 187+28 - 15" REINFORCED CONCRETE PIPE 30' LONG  
 Concrete Class B (1-2 1/2 - 5) - 2.3 cu yds  
 Reinforcing Steel - 33 lbs

STA 189+00 - 15" REINFORCED CONCRETE PIPE 30' LONG  
 Concrete Class B (1-2 1/2 - 5) - 2.3 cu yds  
 Reinforcing Steel - 33 lbs

DATE	BY	APP'D	FR	SCALE
1921	...	...	...	...



14