

INDEX OF SHEETS

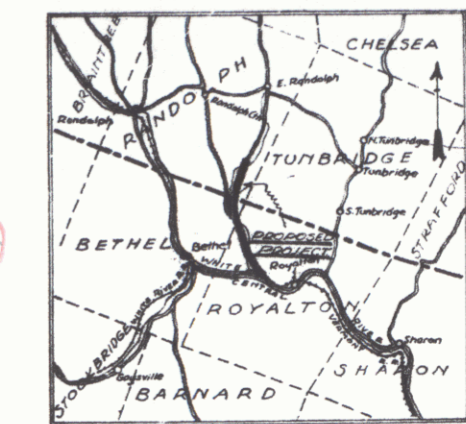
SHEET NO.	TITLE PAGE
1	TYPICAL CROSS-SECTION OF IMPROVEMENT
2	PLAN AND PROFILE STA. 0+00 TO 13+00
3	13+00 TO 29+00
4	29+00 TO 45+00
5	45+00 TO 61+00
6	61+00 TO 74+00
7	74+00 TO 90+00
8	90+00 TO 105+64.8
9	105+64.8 TO 118+00
10	118+00 TO 134+00
11	134+00 TO 150+00
12	150+00 TO 164+00
13	164+00 TO 175+00
14	175+00 TO 190+00
15	190+00 TO 204+00
16	204+00 TO 218+00
17	218+00 TO 232+00
18	232+00 TO 247+00
19	247+00 TO 259+00
20	259+00 TO 273+00
21	273+00 TO 288+00
22	288+00 TO 302+00
23 to 31	BRIDGE STA. 86+75
32 to 37	BRIDGE STA. 274+25
38	BRIDGE STA. 294+00
39-87	CROSS SECTIONS

STATE OF VERMONT
STATE HIGHWAY DEPARTMENT

PLAN AND PROFILE OF PROPOSED
STATE HIGHWAY
FEDERAL AID PROJECT

TOWNS OF ROYALTON-BETHEL-RANDOLPH *Pin# 00R747*
WILLIAMSTOWN GULF ROAD
BEGINNING .09 MILES SOUTH OF ROAD LEADING TO BETHEL, AND
EXTENDING NLY. 5.6 MILES TO PRINCE'S STORE IN SO. RANDOLPH

FED. ROAD DIST. NO.	STATE	FED. AID PROJ. NO.	DATE	SHEET NO.	TOTAL SHEETS
5	Vt.	80B		1	



Project No. **FA 80B**



CONVENTIONAL SIGNS

COUNTY LINE	GROUND ELEVATION
TOWN LINE	GRADE ELEVATION
FENCE LINE	
STONE WALL	
UNFENCED PROPERTY	
GUARD RAIL	
TRAVELED WAY	CURVE DATA
RAILROAD	DEFLECTION ANGLE Δ
RETAINING WALL	DEGREE OF CURVE D
CENTER LINE	RADIUS OF CURVE R
SHOULDER LINE	

THESE PLANS SUBJECT TO SUCH REVISIONS AS MAY BE REQUIRED
BY THE BUREAU OF PUBLIC ROADS OR THE CHIEF ENGINEER

FA 80B

APRIL 30 1927
H. D. Doughty
SUPERVISOR
SUBMITTED BY ORDER OF THE STATE HIGHWAY BOARD
APRIL 30 1927
V. B. Baker
CHIEF ENGINEER
BUREAU OF PUBLIC ROADS

SHEET 1

DISTRICT ENGINEER
BUREAU OF PUBLIC ROADS
RECOMMENDED FOR APPROVAL
CHIEF ENGINEER
BUREAU OF PUBLIC ROADS
APPROVED

WOOD GUARD RAIL REQUIRED

STA. 0+67 TO STA. 1+23 - LENGTH 56 feet
4+06 " 4+70 " 24 "
5+37 " 6+01 " 24 "
6+71 " 7+35 " 24 "
8+06 " 8+70 " 24 "
9+41 " 10+05 " 24 "
11+12 " 11+76 " 24 "
12+51 " 13+15 " 24 "
TOTAL FOR SHEET - 360 feet

CABLE GUARD RAIL REQUIRED

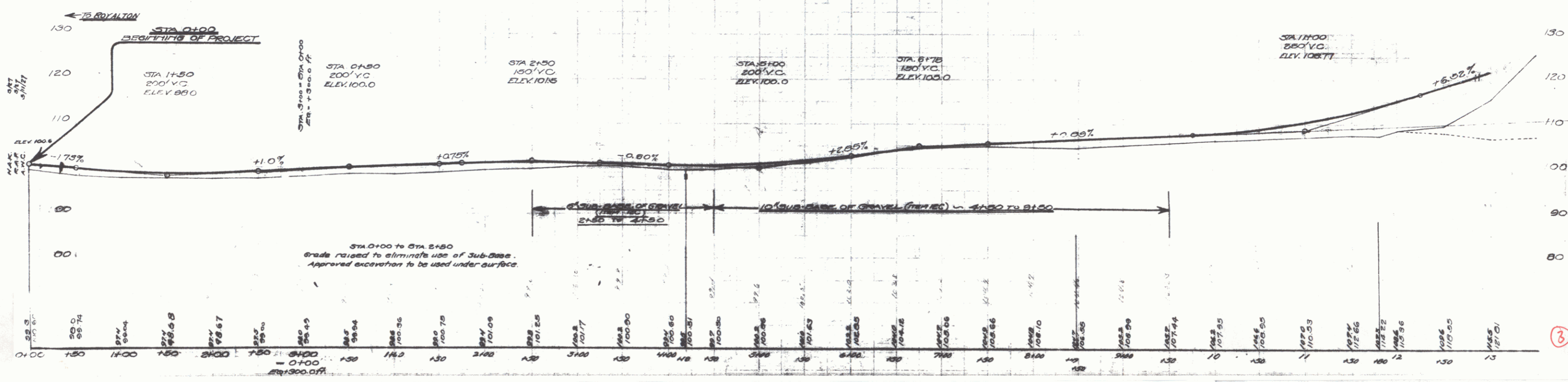
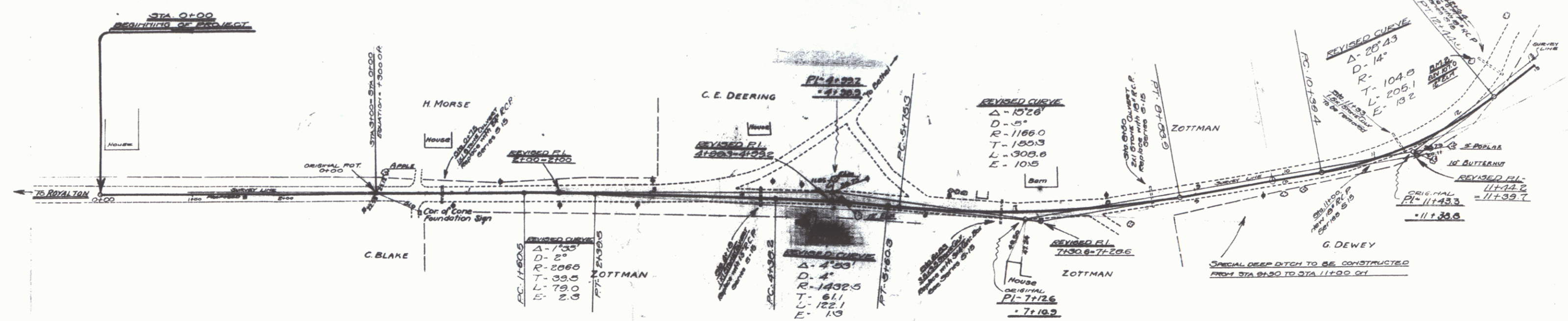
LEFT

STA. 9+80 TO STA. 13+00 - LENGTH 320 ft.
--

NEW CULVERT REQUIRED

STA. 0+75 - 24" REINF. CONCRETE PIPE 30' LONG Concrete Class B (1-2 1/2") - 4.1 cu yds Reinforcing Steel - 33 lbs.
STA. 4+10 - 15" REINF. CONCRETE PIPE - 36' LONG Concrete Class B (1-2 1/2") - 1.9 cu yds Reinforcing Steel - 33 lbs.
STA. 6+53 - 36" REINF. CONC. BOX CULVERT Concrete Class A (1-2 1/2") - 17.8 cu yds Reinforcing Steel - 1190 lbs.
STA. 8+50 - 10" REINF. CONCRETE PIPE 30' LONG Concrete Class B (1-2 1/2") - 2.7 cu yds Reinforcing Steel - 33 lbs.

STA. 11+00 - 18" REINF. CONCRETE PIPE 36' LONG Concrete Class B (1-2 1/2") - 2.7 cu yds Reinforcing Steel - 33 lbs.
STA. 12+64 - 10" REINF. CONCRETE PIPE - 42' LONG Concrete Class B (1-2 1/2") - 2.7 cu yds Reinforcing Steel - 33 lbs.



NO. 0 GUARD RAIL REQUIRED

LEFT
 STA 15+40 TO STA 17+12 - LENGTH 72 FEET
 STA 10+30 TO STA 10+62 - 24'

RIGHT
 STA 10+30 TO STA 10+62 - LENGTH 24 FEET
 TOTAL FOR SHEET - 120 FEET

CABLE GUARD RAIL REQUIRED

LEFT
 STA 13+00 TO STA 13+85 - LENGTH - 85 FT
 STA 24+00 TO STA 27+00 - LENGTH - 263 FT
 STA 29+57 TO STA 29+57

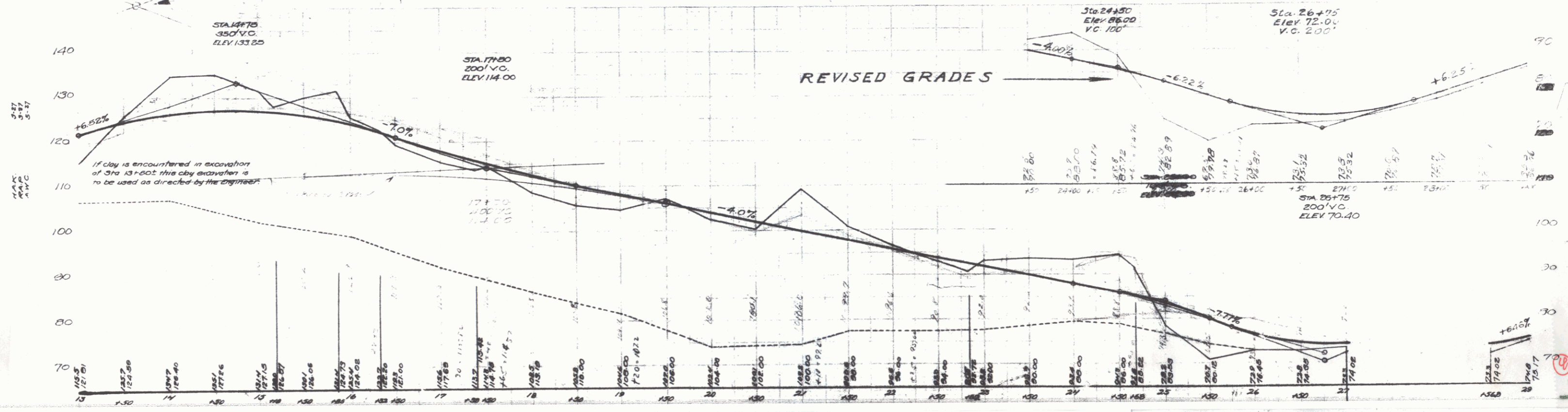
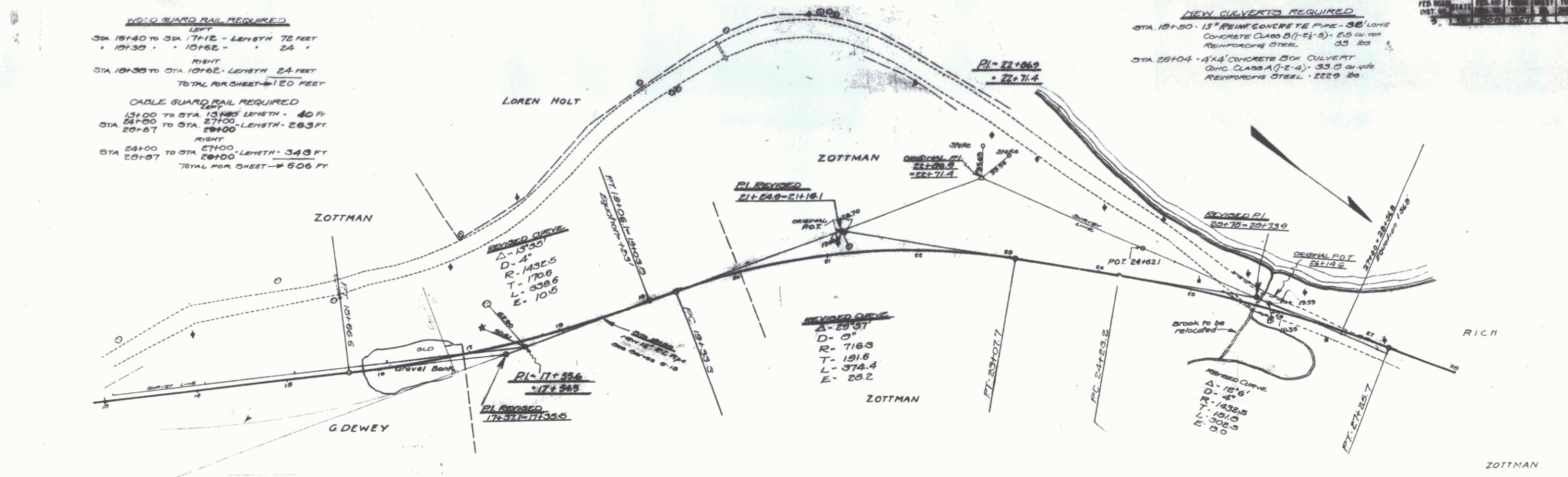
RIGHT
 STA 24+00 TO STA 27+00 - LENGTH - 343 FT
 STA 29+57 TO STA 29+57 - 606 FT

NEW CULVERTS REQUIRED

STA 18+50 - 15" REINFORCED CONCRETE PIPE - 36' LONG
 CONCRETE CLASS B (1-2-2) - 25 cu yds
 REINFORCING STEEL - 35 lbs

STA 26+04 - 4x4' CONCRETE BOX CULVERT
 CONC CLASS A (1-2-4) - 33.0 cu yds
 REINFORCING STEEL - 2229 lbs

PER HOUR	PER DAY	PER WEEK	TOTAL
1	1	1	1
2	2	2	2
3	3	3	3



WOOD GUARD RAIL REQUIRED

LEFT	RIGHT
STA 30+00 TO STA 31+12 - LENGTH 24 FT	STA 30+00 TO STA 31+12 - LENGTH 24 FT
33+30 - 33+62 - 24'	33+30 - 33+62 - 24'
34+00 - 34+26 - 26'	34+00 - 34+26 - 26'
34+30 - 35+12 - 24 FT	34+30 - 35+12 - 24 FT
35+30 - 35+62 - 24'	35+30 - 35+62 - 24'
36+00 - 36+07 - 24'	36+00 - 36+07 - 24'
41+40 - 41+72 - 24'	41+40 - 41+72 - 24'
42+56 - 43+00 - 24'	42+56 - 43+00 - 24'
TOTAL FOR SHEET - 192 FT	

CABLE GUARD RAIL REQUIRED

LEFT	RIGHT
STA 29+00 TO STA 29+25 - LENGTH 25 FT	STA 29+00 TO STA 29+25 - LENGTH 25 FT
34+00 - 44+26 - 576'	34+00 - 44+26 - 576'
	TOTAL FOR SHEET - 1026 FT

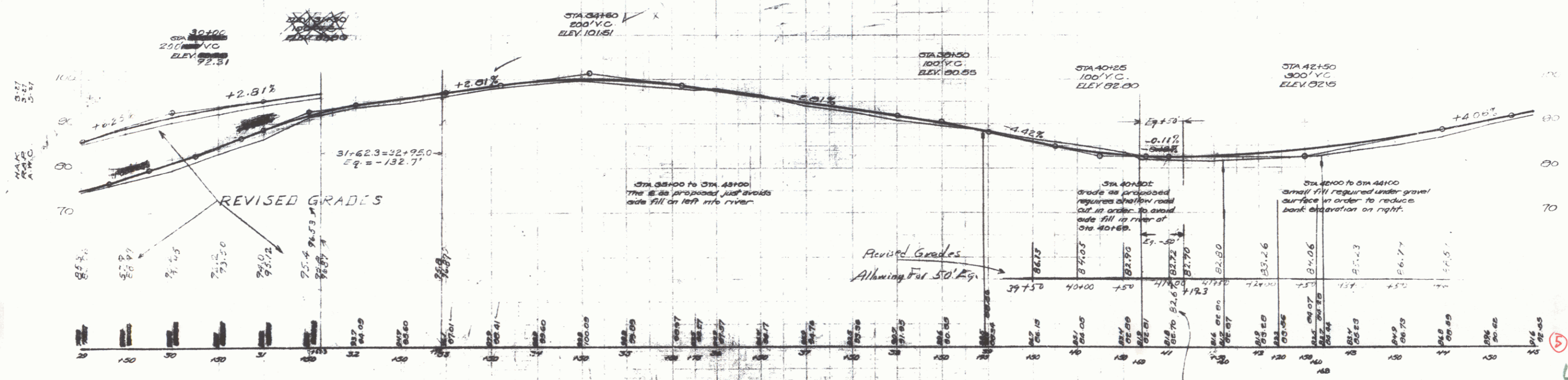
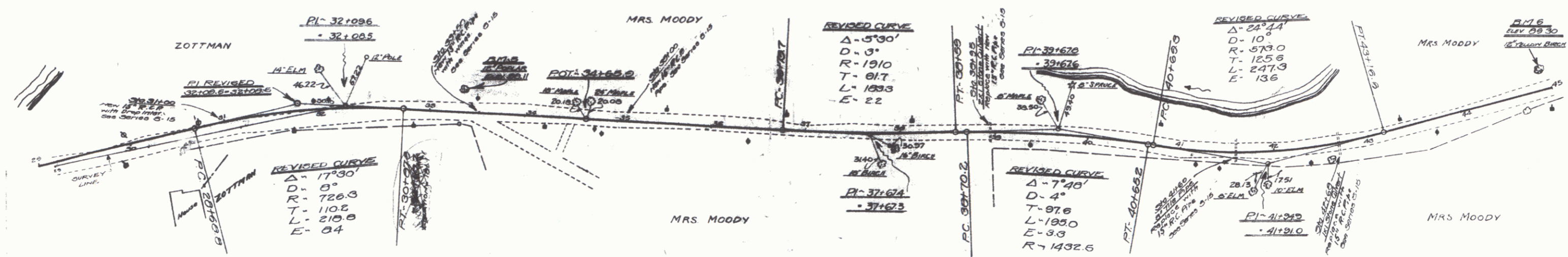
NEW CULVERTS REQUIRED

STA 31+00: 18" REIN. CONCRETE PIPE - 30' LONG WITH 24" INLET Concrete Class A (C-2-4) - 1.0 cu yds Reinforcing Steel - 1.2 cu yds Reinforcing Steel - 100 lbs
STA 33+50: 18" REIN. CONCRETE PIPE - 30' LONG WITH WINGS Concrete Class A (C-2-4) - 1.0 cu yds Reinforcing Steel - 60 lbs
STA 35+00: 15" REIN. CONCRETE PIPE - 20' LONG Concrete Class B (C-2-5) - 0.3 cu yds Reinforcing Steel - 33 lbs
Sta. 39+95: 18" REIN. CONCRETE PIPE - 25' LONG Concrete Class B (C-2-5) - 0.7 cu yds Reinforcing Steel - 33 lbs

REINFORCING STEEL REQUIRED

Sta. 41+60: 18" REIN. CONCRETE PIPE - 30' LONG Concrete Class B (C-2-5) - 1.0 cu yds Reinforcing Steel - 33 lbs
Sta. 42+60: 18" REIN. CONCRETE PIPE - 42' LONG Concrete Class B (C-2-5) - 2.3 cu yds Reinforcing Steel - 33 lbs

NO.	DATE	BY	REVISION
1			
2			



4

WOOD GUARD RAIL REQUIRED

LEFT	
STA. 55+50 TO STA. 56+70 - LENGTH 20 FT.	
• 55+50 • 56+00 • 04	
RIGHT	
STA. 47+00 TO STA. 47+24 - LENGTH 24 FT.	
• 51+00 • 51+32 • 24	
• 54+56 • 55+20 • 64	
• 56+30 • 57+10 • 80	
• 58+16 • 59+00 • 84	
TOTAL FOR SHEET → 440 FT	

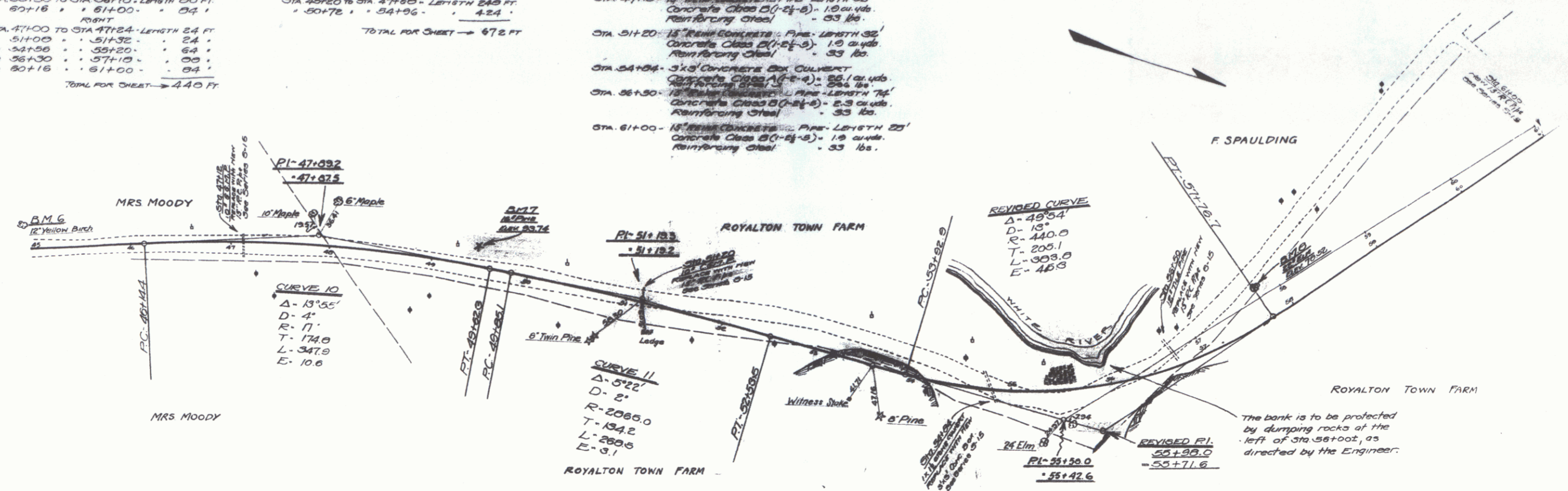
CABLE GUARD RAIL REQUIRED

LEFT	
STA. 45+20 TO STA. 47+60 - LENGTH 240 FT.	
• 50+76 • 54+96 • 424	
TOTAL FOR SHEET → 672 FT	

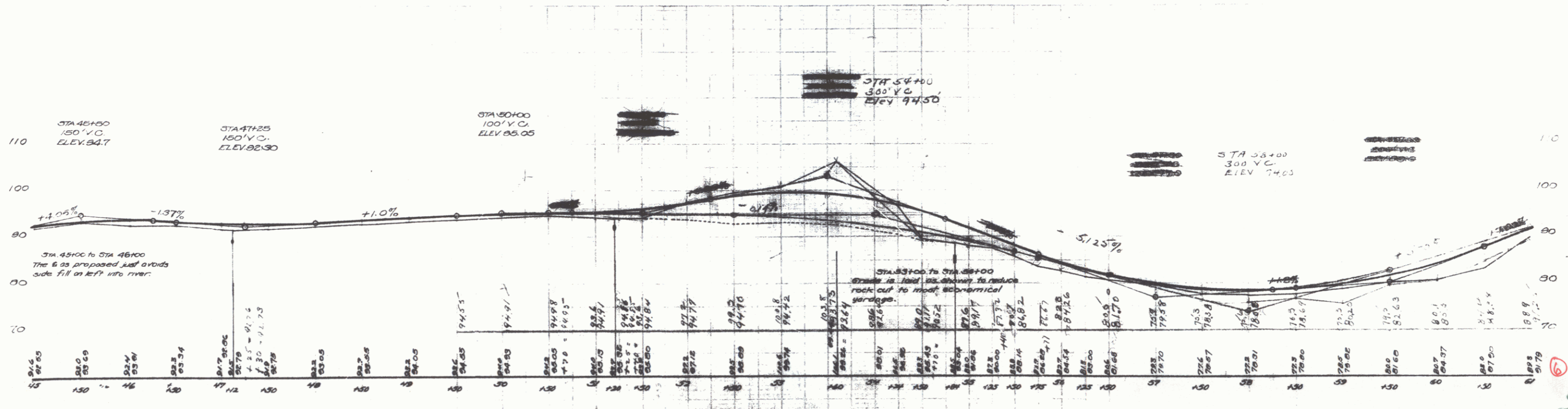
PIPE CONCRETE REQUIRED

STA. 47+10 - 12" REINFORCED CONCRETE PIPE - LENGTH 32'	Concrete Class B (1-2-8) - 1.9 cu yds.	Reinforcing Steel - 33 lbs.
STA. 51+20 - 12" REINFORCED CONCRETE PIPE - LENGTH 32'	Concrete Class B (1-2-8) - 1.9 cu yds.	Reinforcing Steel - 33 lbs.
STA. 54+56 - 3x6 CONCRETE BOX CULVERT	Concrete Class A (1-4) - 56.1 cu yds.	Reinforcing Steel - 266 lbs.
STA. 56+30 - 12" REINFORCED CONCRETE PIPE - LENGTH 74'	Concrete Class B (1-2-8) - 5.3 cu yds.	Reinforcing Steel - 53 lbs.
STA. 61+00 - 12" REINFORCED CONCRETE PIPE - LENGTH 20'	Concrete Class B (1-2-8) - 1.9 cu yds.	Reinforcing Steel - 33 lbs.

10. PLAN STATE 1200' ASU 1" = 100' HORIZ. 1" = 10' VERT. 1" = 10' HORIZ. 1" = 10' VERT. 1" = 10' HORIZ. 1" = 10' VERT.



5.2
5.2
5.2
5.2
5.2



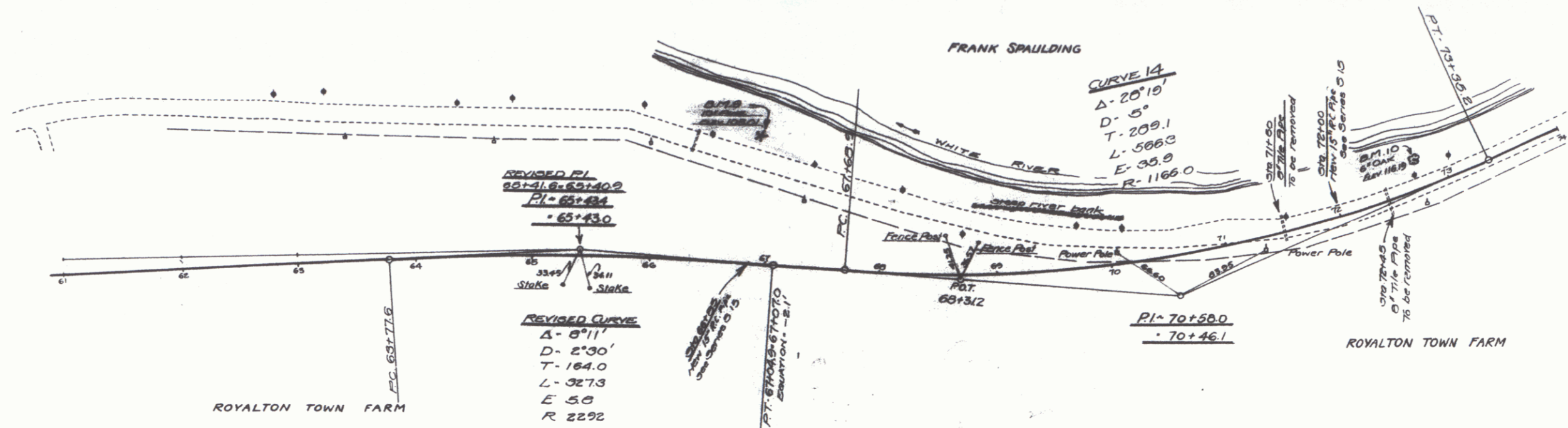
6

WOOD GUARD RAIL REQUIRED
 LEFT
 STA 61+00 TO STA 61+12 - LENGTH 12 FT
 RIGHT
 STA 61+00 TO STA 61+12 - LENGTH 12 FT
 • 66+73 • 68+97 • 24'
 • 71+00 • 72+12 • 24'
 TOTAL FOR CHEST -> 72 FT

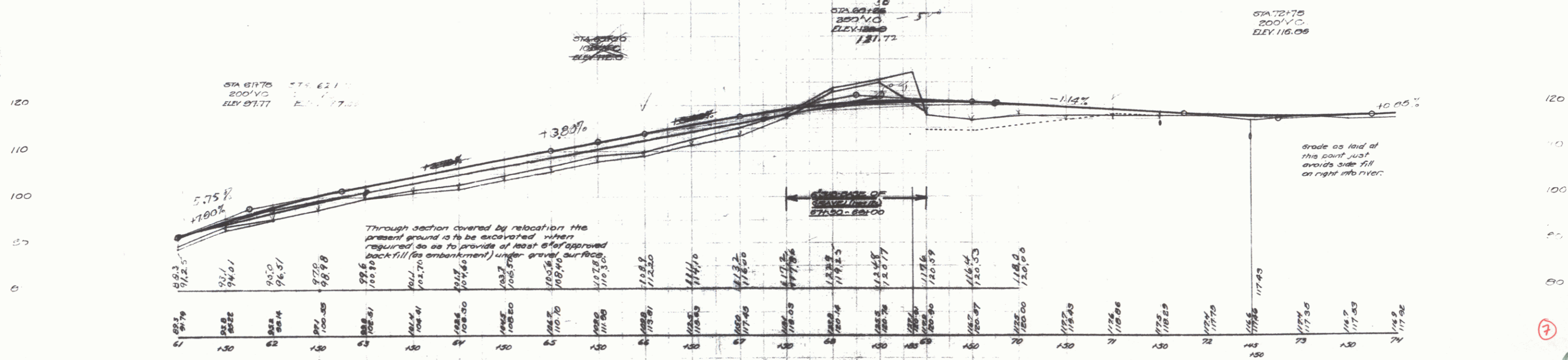
CABLE GUARD RAIL REQUIRED
 LEFT
 STA 65+00 TO STA 67+24 - LENGTH 144'
 • 66+00 • 70+24 • 144'
 • 71+20 • 73+04 • 284'
 TOTAL FOR CHEST -> 362 FT

REINFORCING STEEL REQUIRED
 STA 65+00 - 18" REINFORCING STEEL PIPE - LENGTH 36'
 Concrete Class B(1-2)-1.9 cu yds.
 Reinforcing Steel - 33 lbs
 STA 70+00 - 18" REINFORCING STEEL PIPE - LENGTH 30'
 Concrete Class B(1-2)-1.9 cu yds.
 Reinforcing Steel - 33 lbs

PAID - ROAD STATE 2004.00
 DIST. IN. STATE 2004.00
 YEAR 2004.00
 ELEV. 116.00



5-27
 5-27
 5-27

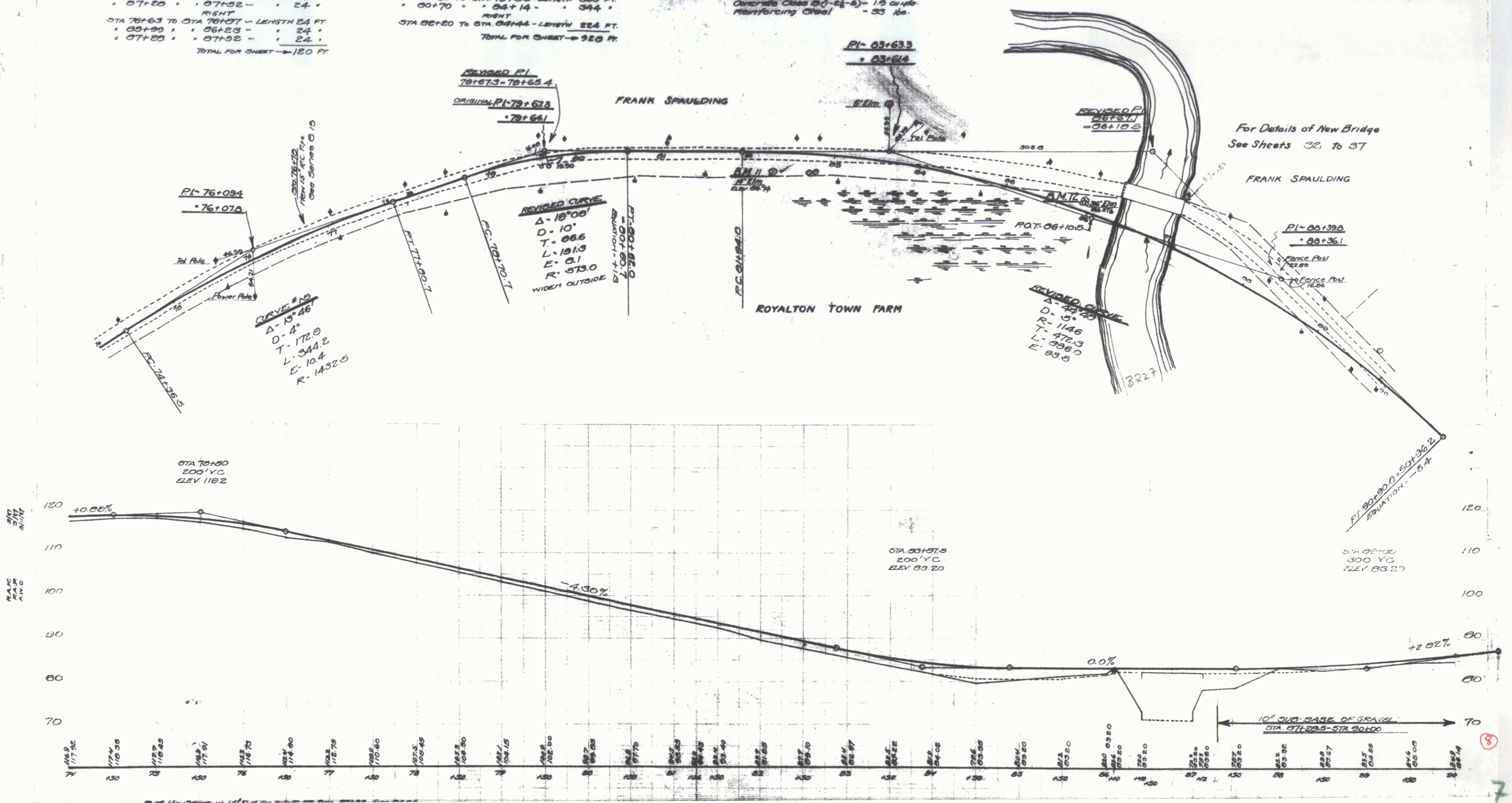


WOOD GUARD RAIL REQUIRED
 LEFT
 STA 05+00 TO STA 06+23 - LENGTH 24 FT.
 * 07+20 * 07+52 - 24 *
 RIGHT
 STA 76+63 TO STA 76+07 - LENGTH 24 FT.
 * 05+00 * 05+23 - 24 *
 * 07+20 * 07+52 - 24 *
 TOTAL FOR SHEET - 180 FT.

CABLE GUARD RAIL REQUIRED
 LEFT
 STA 76+20 TO STA 76+00 - LENGTH 360 FT.
 * 00+70 * 04+14 - 344 *
 RIGHT
 STA 05+20 TO STA 04+44 - LENGTH 224 FT.
 TOTAL FOR SHEET - 584 FT.

NEW CURVES REQUIRED
 STA 76+75 (1) Curve Description: Pave - 32' wide.
 Concrete Class B (1-5 1/2") 1.5 cu yds.
 Reinforcing Steel - 33 lbs.

TED ROAD	STATE	FED. RD.	TRAIL	DATE	NO.	SHEET
1957	MD	115	10	1957	10	27



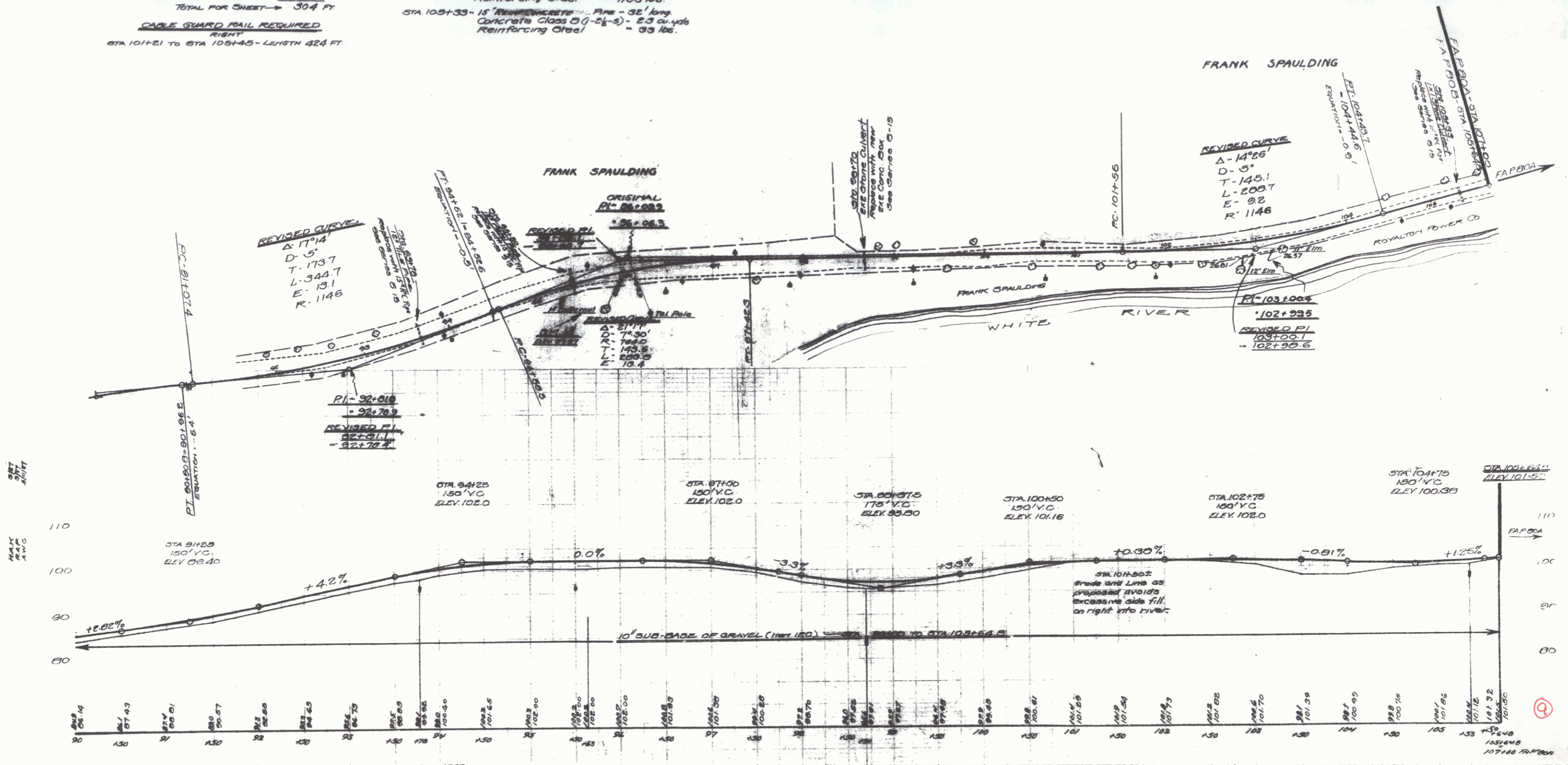
For Details of New Bridge
 See Sheets 32 to 37

3

WOOD GUARD RAIL REQUIRED
 LEFT
 STA 93+66 TO STA 93+80 - LENGTH 14'
 " 95+30 " " 95+62 " " 32'
 " 98+58 " " 98+82 " " 24'
 " 105+21 " " 105+45 " " 24'
 RIGHT
 STA 93+64 TO STA 93+80 - LENGTH 16'
 " 95+30 " " 95+70 " " 40'
 " 98+55 " " 98+82 " " 27'
 " 100+30 " " 100+70 " " 40'
 TOTAL FOR SHEET - 304 FT

CABLE GUARD RAIL REQUIRED
 RIGHT
 STA 101+21 TO STA 105+45 - LENGTH 424 FT

NEW CULVERTS REQUIRED
 STA 93+70 - 18" REINFORCED CONCRETE PIPE - 36' long
 Concrete Class B (1-2-2) - 2.3 cu. yds.
 Reinforcing Steel - 33 lbs.
 STA 95+50 - 18" REINFORCED CONCRETE PIPE - 42' long
 Concrete Class B (1-2-2) - 2.3 cu. yds.
 Reinforcing Steel - 33 lbs.
 STA 98+70 - 24" CONCRETE BOX CULVERT
 Concrete Class A (1-2-4) - 18.7 cu. yds.
 Reinforcing Steel - 1103 lbs.
 STA 105+33 - 18" REINFORCED CONCRETE PIPE - 32' long
 Concrete Class B (1-2-2) - 2.3 cu. yds.
 Reinforcing Steel - 33 lbs.



SET
 MARK
 PINS
 1/4" DIA.

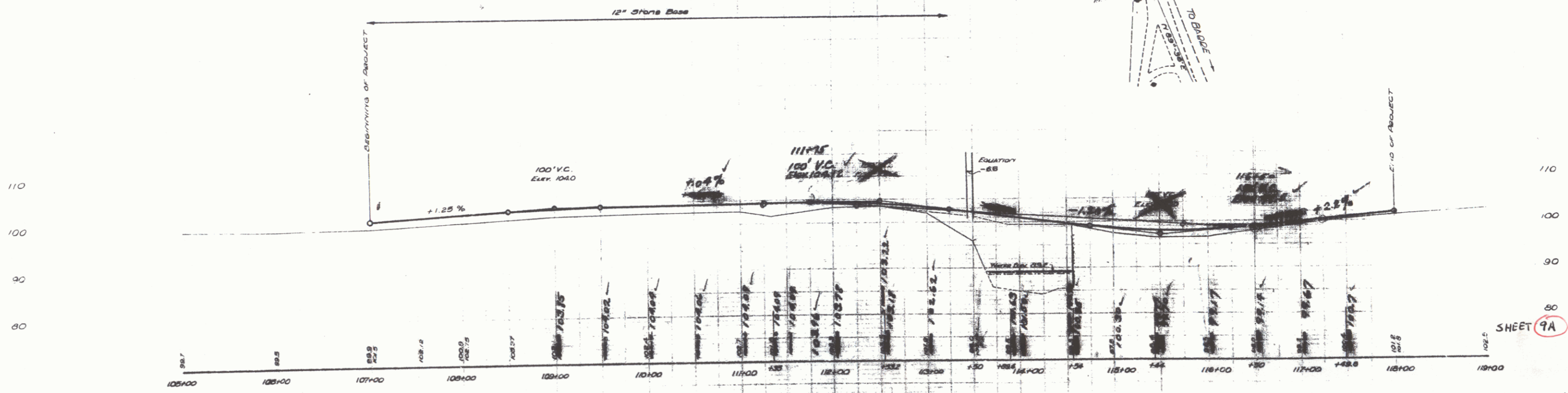
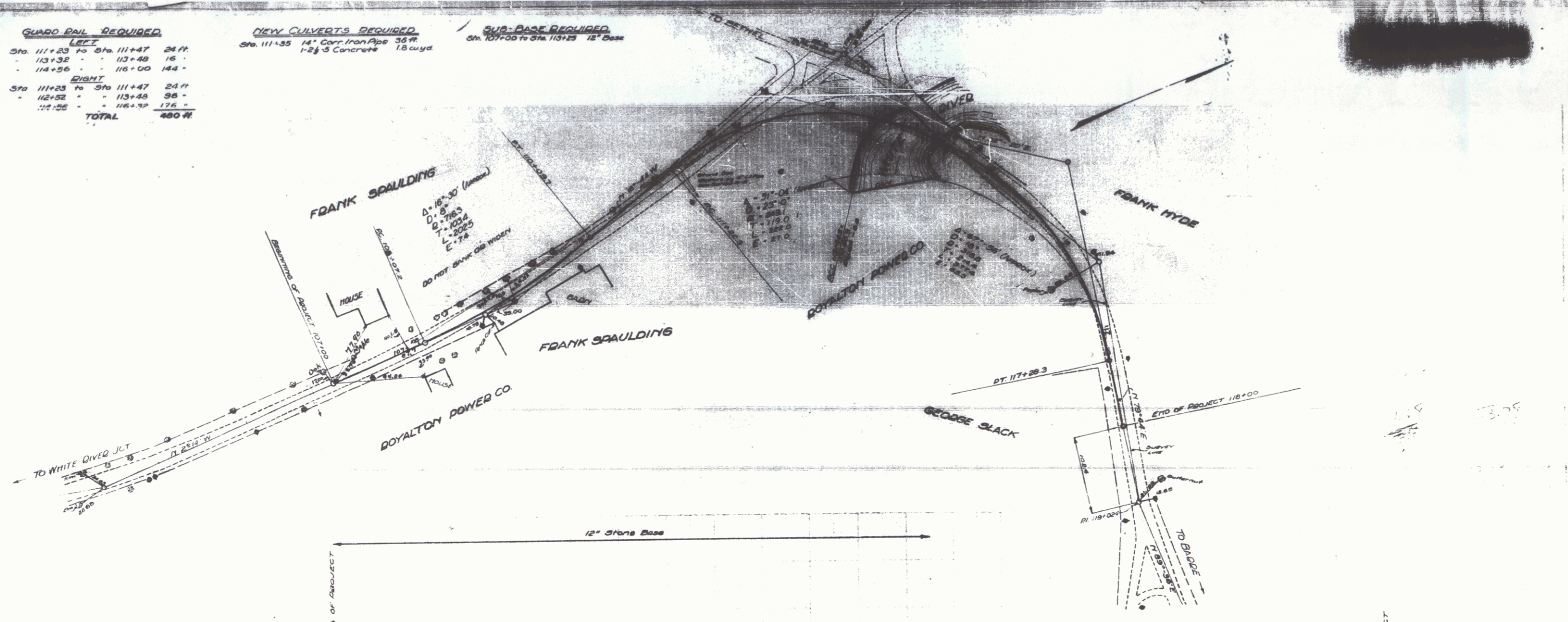
9

GUARD RAIL REQUIRED

LEFT		
Sta. 111+23 To Sta. 111+47	24 ft	
113+32	16	
114+56	14	
RIGHT		
Sta. 111+23 To Sta. 111+47	24 ft	
112+52	36	
115+25	17.6	
TOTAL	480 ft	

NEW CULVERTS REQUIRED
 Sta. 111+35 14" Cor. Iron Pipe 35 ft
 1-2 3 Concrete 1.8 cu yd

SUB-BASE REQUIRED
 Sta. 107+00 to Sta. 113+23 12" Base



SHEET 9A

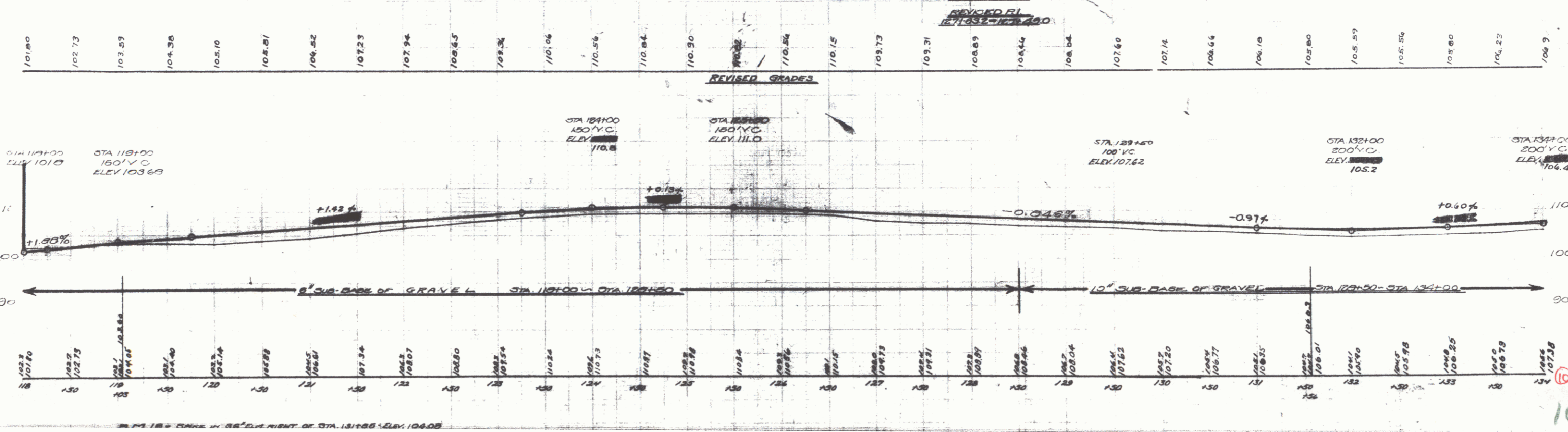
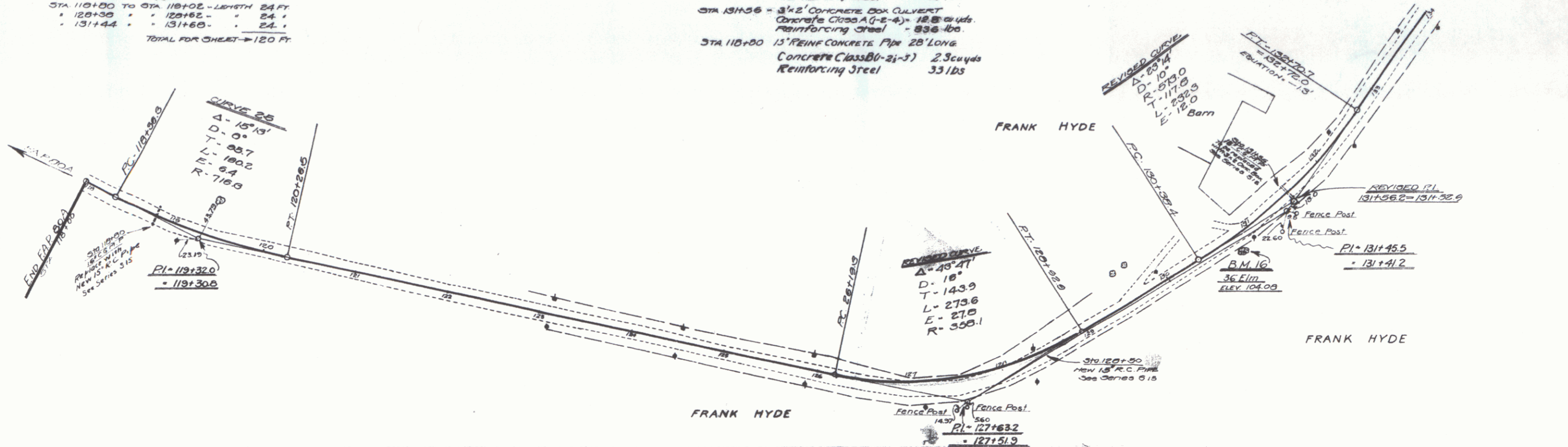
9

WOOD GUARD RAIL REQUIRED
 LEFT
 STA 120+35 TO STA 120+55 - LENGTH 20 FT.
 • 131+44 • 131+60 • 54 •
 RIGHT
 STA 110+00 TO STA 110+20 - LENGTH 20 FT.
 • 120+35 • 120+55 • 24 •
 • 131+44 • 131+60 • 24 •
 TOTAL FOR SHEET - 120 FT.

CABLE GUARD RAIL REQUIRED
 LEFT
 STA 110+00 TO STA 110+12 - LENGTH 12 FT.

NEW CULVERTS REQUIRED
 STA 118+50 - 15' REINFORCED CONCRETE PIPE 34" LONG
 Concrete Class B(1-2-5) - 1.9 cu yds.
 Reinforcing Steel - 33 lbs.
 STA 131+56 - 3 1/2' CONCRETE BOX CULVERT
 Concrete Class A(1-2-4) - 18.8 cu yds.
 Reinforcing Steel - 836 lbs.
 STA 115+00 - 15' REINFORCED CONCRETE PIPE 28" LONG
 Concrete Class B(1-2-5) - 2.3 cu yds.
 Reinforcing Steel - 33 lbs.

DATE	BY	SCALE	NO.	SHEETS
			10	12



DATE
 3-27
 3-27
 3-27

10

PRO. ROAD	DATE	BY	CHKD	APP'D
037 26	05/27	05/27	11	12

WOOD GUARD RAIL REQUIRED
 LEFT
 STA 146+57 TO STA 147+21 - LENGTH 64 FT
 RIGHT
 STA 142+30 TO STA 142+62 - LENGTH 32 FT
 " 146+57 " 146+81 " 24 "
 TOTAL FOR SHEET - 112 FT

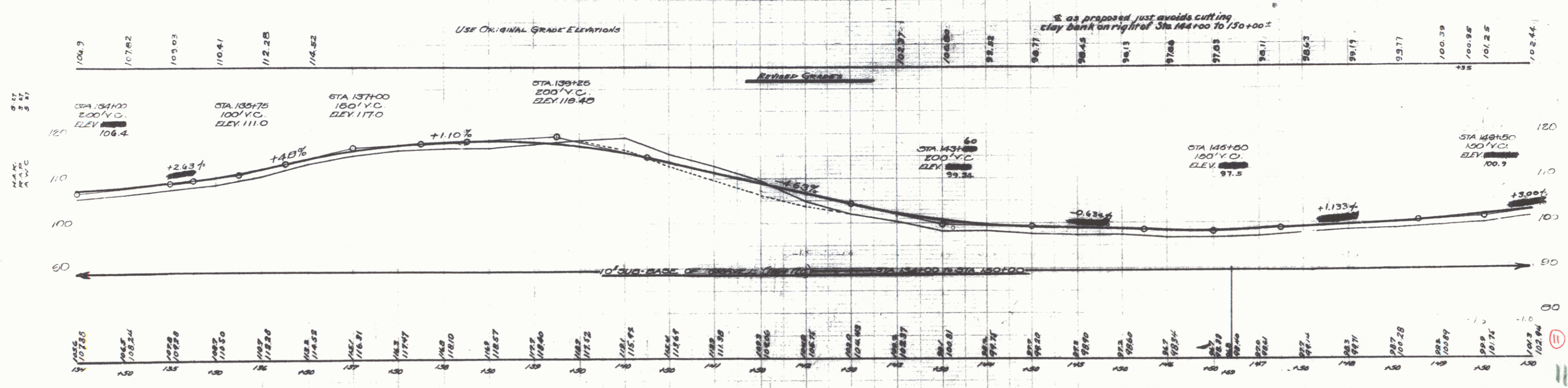
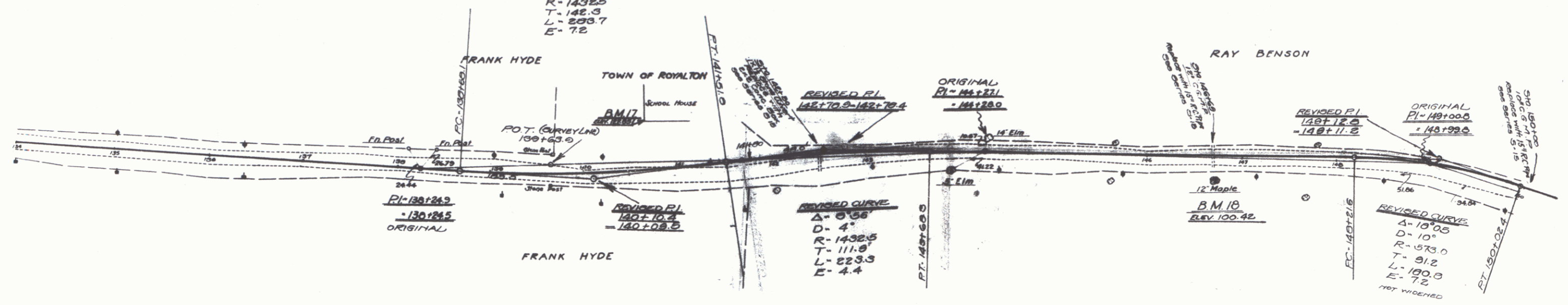
CABLE GUARD RAIL REQUIRED
 LEFT
 STA 141+50 TO STA 143+55 - LENGTH 205 FT
 " 143+40 " 150+00 " 160 "
 TOTAL FOR SHEET - 400 FT

NEW CULVERTS REQUIRED
 STA 142+90 - 2'x2' CONCRETE BOX CULVERT
 Concrete Class A (-2-A) - 117 cu yds
 Reinforcing Steel - 763 lbs

STA 146+50 - 15" REINF CONCRETE PIPE 34' LONG
 Concrete Class B (-2-B) - 23 cu yds
 Reinforcing Steel - 33 lbs

STA 150+00 - 15" REINF CONCRETE PIPE 30' LONG
 Concrete Class B (-2-B) - 19 cu yds
 Reinforcing Steel - 33 lbs

REVISED CURVE
 $\Delta = 11^{\circ}21'$
 $D = 4^{\circ}$
 $R = 1432.5$
 $T = 142.3$
 $L = 223.7$
 $E = 7.2$

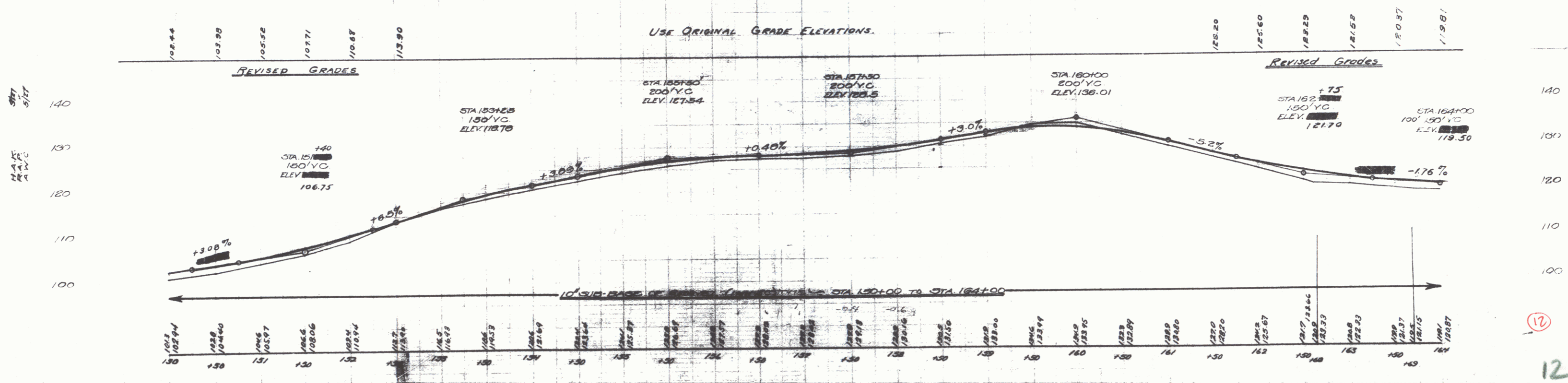
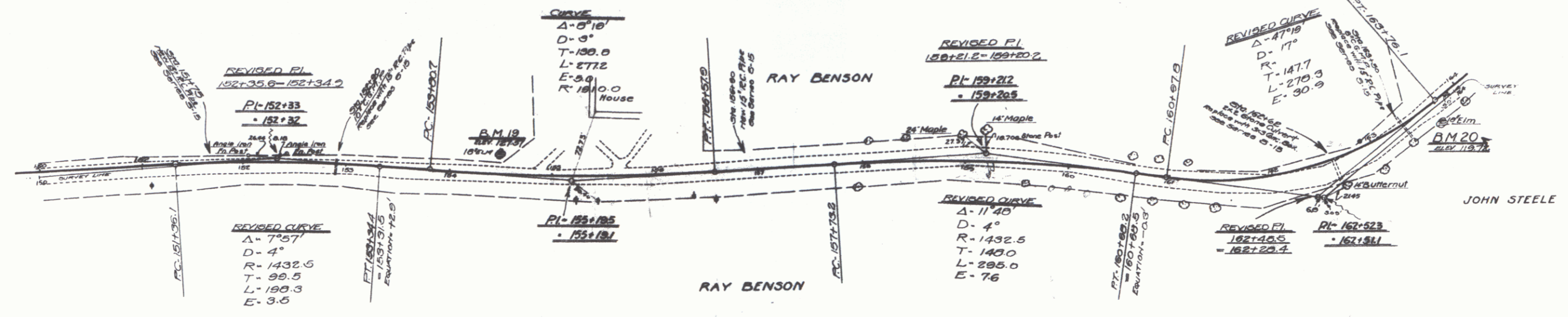


FED. DIST.	STATE	PROJECT NO.	SHEET NO.
9	VT	008 1021	12

WOOD GUARD RAIL REQUIRED
 LEFT
 STA 160+20 TO STA 160+92 - LENGTH 72 FT
 RIGHT
 STA 150+38 TO STA 150+62 - LENGTH 24 FT
 STA 152+50 TO STA 152+54 - " 4 FT
 STA 153+30 TO STA 153+62 - " 32 FT
 TOTAL FOR SHEET - 144 FT

CABLE GUARD RAIL REQUIRED
 LEFT
 STA 152+20 TO STA 164+00 - LENGTH 118 FT
 STA 150+100 TO STA 150+140 - " 40 FT
 TOTAL FOR SHEET - 220 FT

NEW CULVERTS REQUIRED
 STA 151+70 - 15" REINFORCED CONCRETE PIPE 36' LONG
 Concrete Class B (1-2-5) - 1.8 cu yds.
 Reinforcing Steel - 33 lbs.
 STA 152+50 - 15" REINFORCED CONCRETE PIPE - 36' LONG
 Concrete Class B (1-2-5) - 2.3 cu yds.
 Reinforcing Steel - 33 lbs.
 STA 155+80 - 15" REINFORCED CONCRETE PIPE 30' LONG
 Concrete Class B (1-2-5) - 1.9 cu yds.
 Reinforcing Steel - 33 lbs.
 STA 152+62 - 3x3 CONCRETE BOX CULVERT
 Concrete Class A (1-2-4) - 22.2 cu yds.
 Reinforcing Steel - 1464 lbs.
 STA 153+50 - 15" REINFORCED CONCRETE PIPE 36' LONG
 Concrete Class B (1-2-5) - 1.9 cu yds.
 Reinforcing Steel - 33 lbs.



12

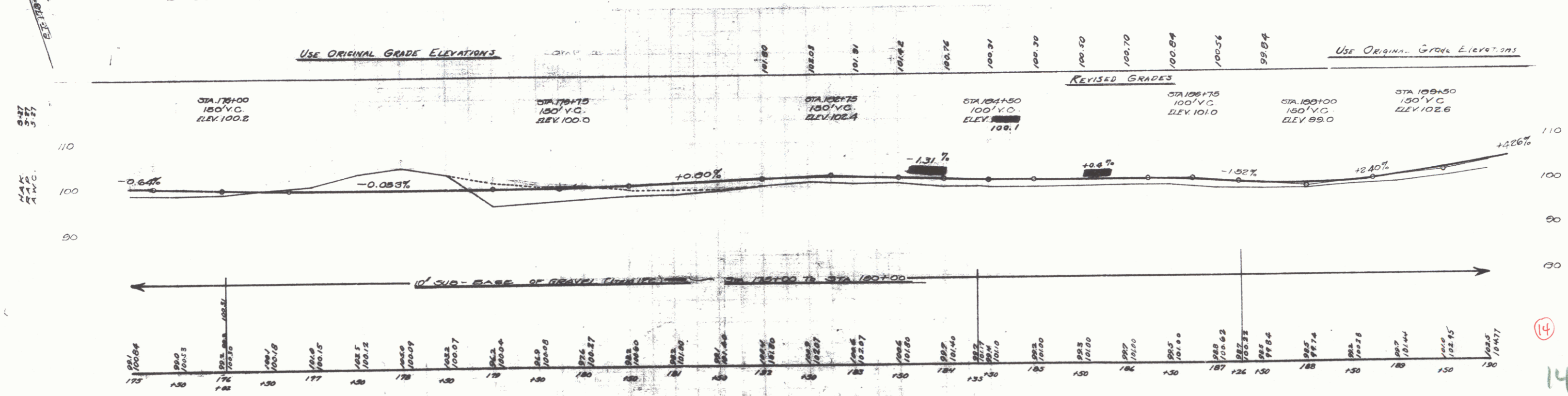
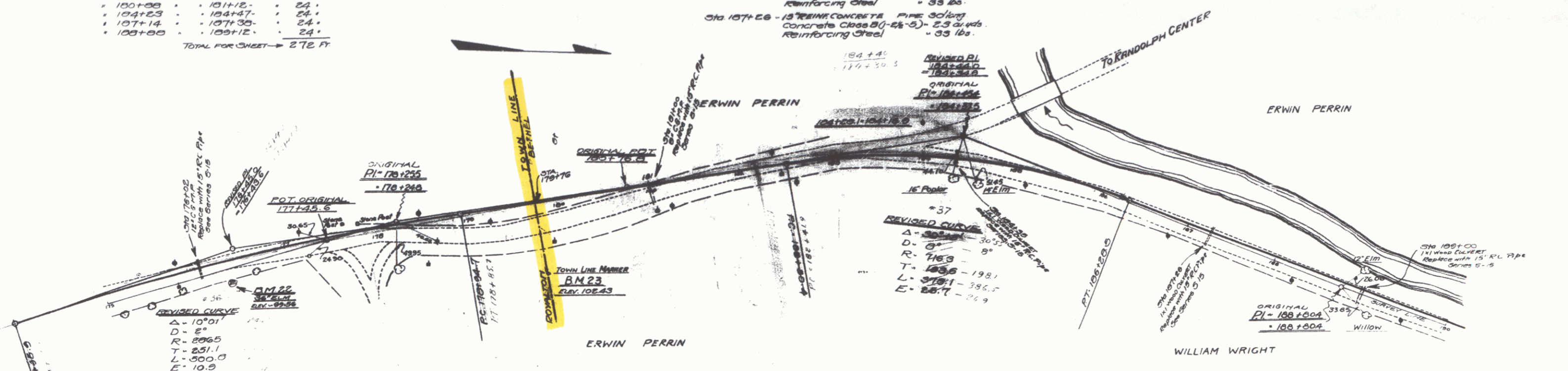
WOOD GUARD RAIL REQUIRED
 LEFT
 STA 180+89 TO STA 181+12 - LENGTH 24 FT
 * 181+00 * * 181+00 * 00 *
 * 184+23 * * 184+27 * 24 *
 * 187+14 * * 187+38 * 24 *
 RIGHT
 STA 175+00 TO STA 176+14 - LENGTH 24 FT
 * 180+08 * * 181+12 * 24 *
 * 184+23 * * 184+27 * 24 *
 * 187+14 * * 187+38 * 24 *
 * 188+00 * * 189+12 * 24 *
 TOTAL FOR SHEET - 272 FT

CABLE GUARD RAIL REQUIRED
 LEFT
 STA 175+00 TO STA 177+28 - LENGTH 228 FT
 * 178+20 * * 178+24 * 04 *
 * 188+08 * * 190+00 * 112 *
 TOTAL FOR SHEET - 444 FT

NEW CULVERTS REQUIRED
 STA 176+02 - 15" REINFORCED CONCRETE PIPE 30' LONG
 Concrete Class B (1-2 1/2 - 5) - 1.8 cu yds
 Reinforcing Steel - 33 lbs
 STA 181+00 - 15" REINFORCED CONCRETE PIPE 20' LONG
 Concrete Class B (1-2 1/2 - 5) - 1.6 cu yds
 Reinforcing Steel - 33 lbs
 STA 184+35 - 15" REINFORCED CONCRETE PIPE 34' LONG
 Concrete Class B (1-2 1/2 - 5) - 2.3 cu yds
 Reinforcing Steel - 33 lbs
 STA 187+28 - 15" REINFORCED CONCRETE PIPE 30' LONG
 Concrete Class B (1-2 1/2 - 5) - 2.3 cu yds
 Reinforcing Steel - 33 lbs

STA 189+00 - 15" REINFORCED CONCRETE PIPE 30' LONG
 Concrete Class B (1-2 1/2 - 5) - 2.3 cu yds
 Reinforcing Steel - 33 lbs

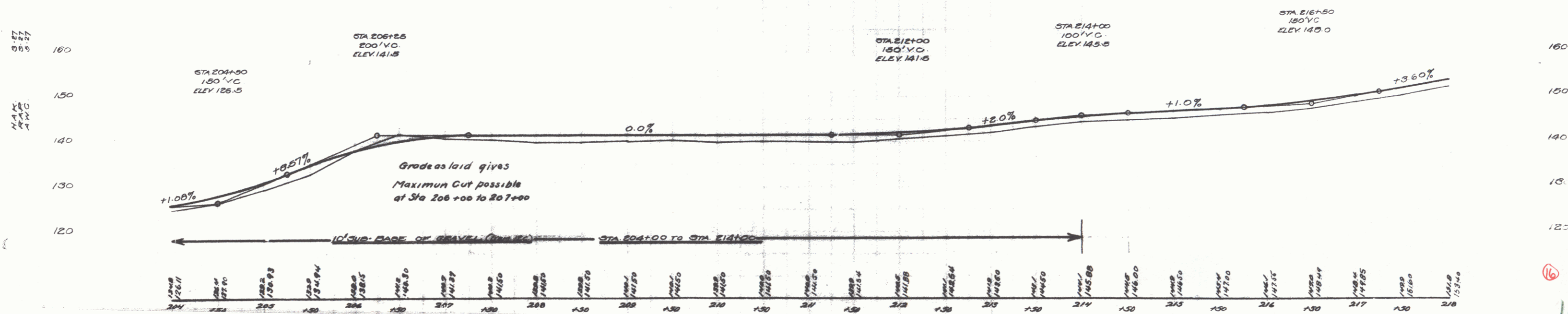
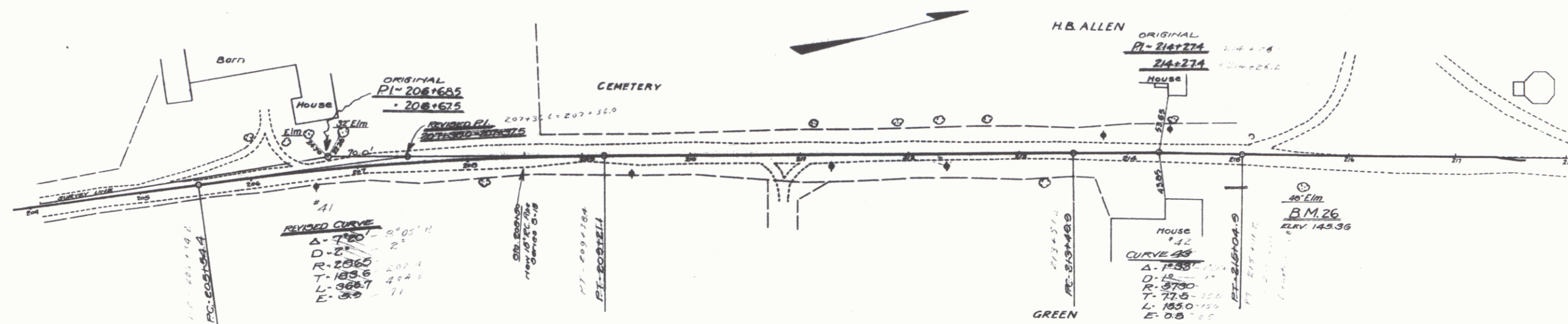
DATE	BY	REVISED	REASON
1921



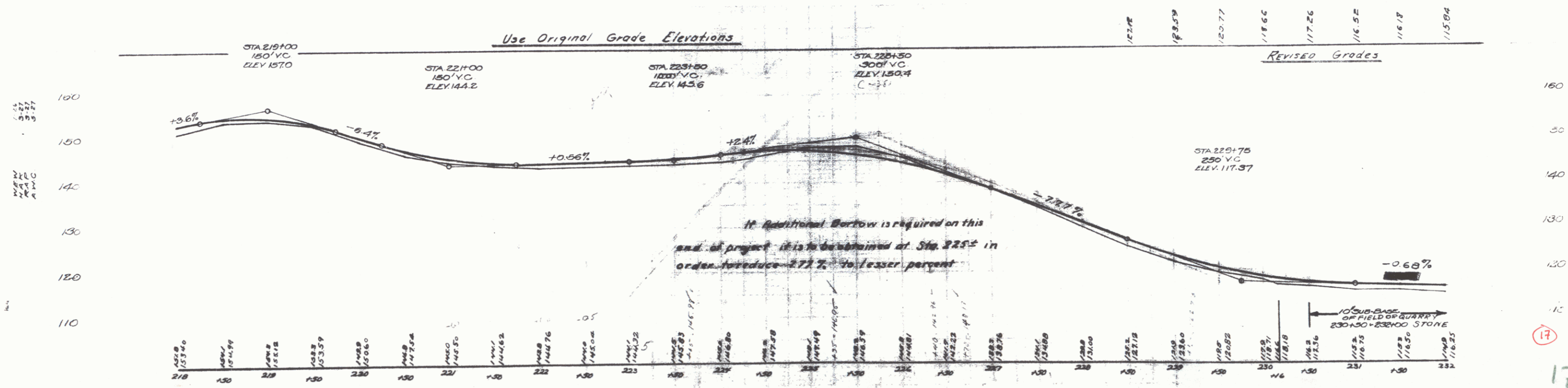
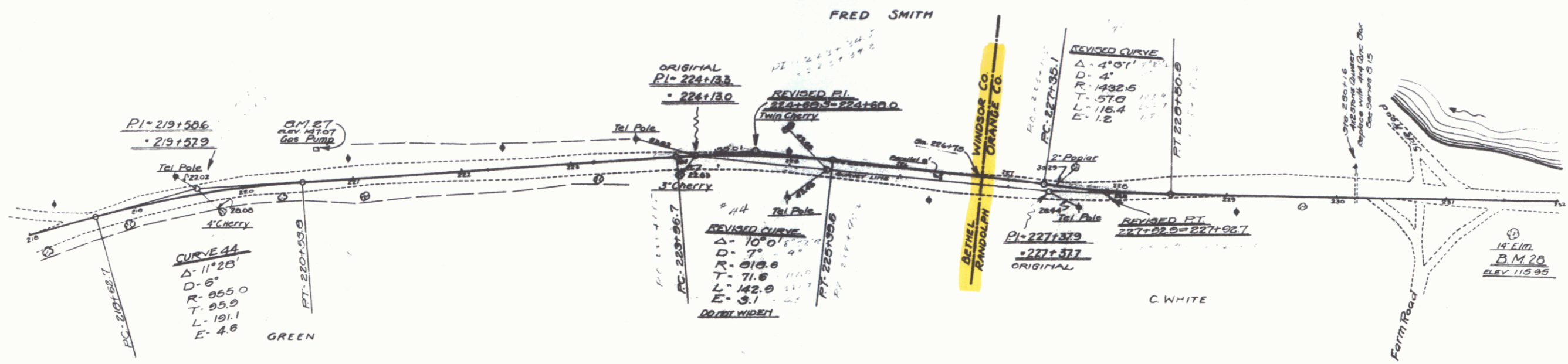
14

WOOD GUARD RAIL REQUIRED
 LEFT
 STA 205+30 TO STA 209+56. LENGTH 24 FT.
 RIGHT
 STA 209+30 TO STA 209+56. LENGTH 24 FT.
 TOTAL FOR SHEET → 48 FT.

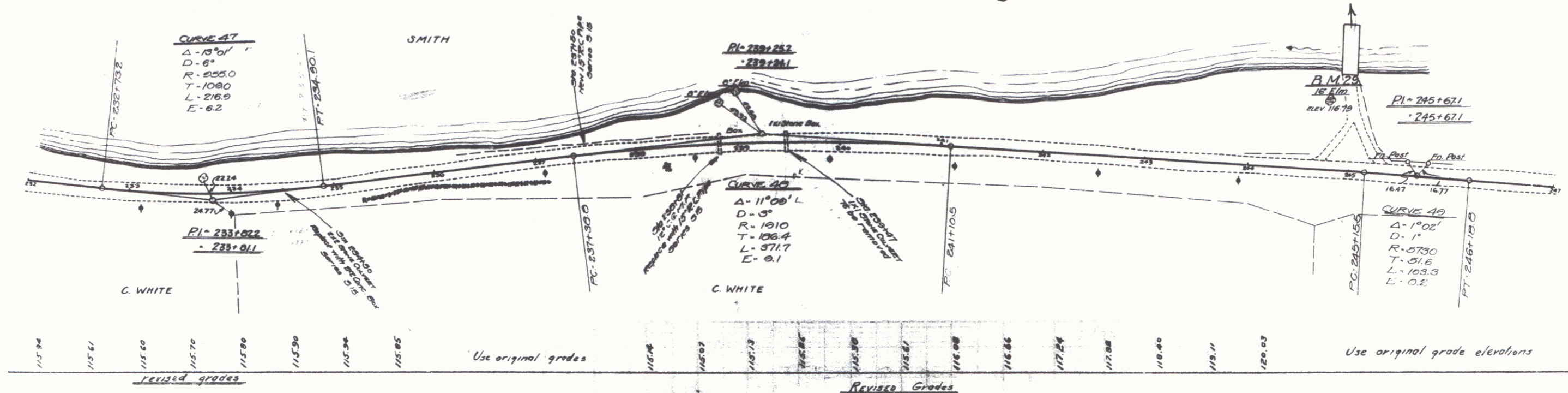
NEW CULVERTS REQUIRED
 STA 206+50 - 15" REINFORC CONCRETE - 20' LONG
 Concrete Class B (1-2 1/2 - 3) - 2.5 cu yds.
 Reinforcing Steel - 33 lbs.



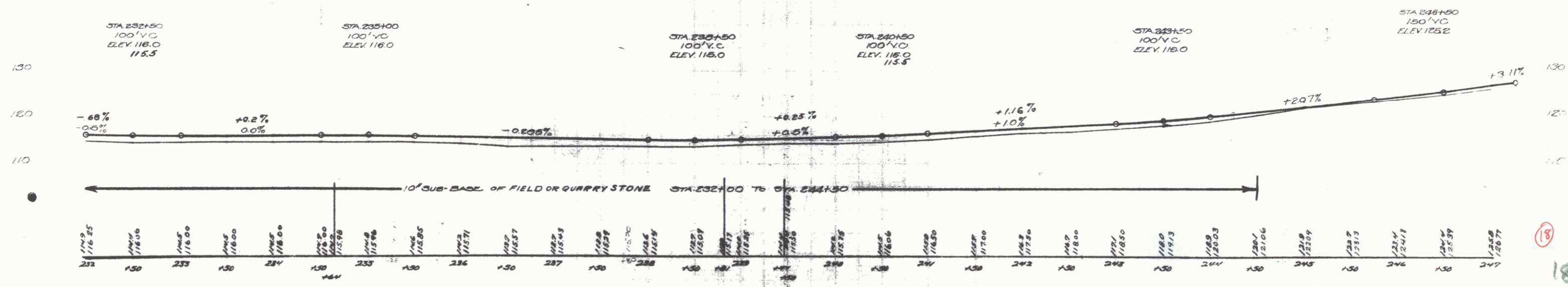
NEW CULVERTS REQUIRED
 STA 230+16 - 4x4 CONC BOX CULVERT
 CONC CLASS A (1-1-4) - 27' 4" cu yds
 RENT CREDIT - 1314.16



NEW CULVERTS REQUIRED
 STA 234+50 - 2x2 CONCRETE BOX CULVERT
 CONC. CLASS A (1-2-4) - 11.7 cu yds
 REINF. STEEL - 76.3 lbs
 STA 237+50 - 18" REINF. CONCRETE PIPE 30' LONG
 CONC. CLASS B (1-2-2) - 1.9 cu yds
 REINF. STEEL - 33 lbs
 STA 238+51 - 18" REINF. CONCRETE PIPE 30' LONG
 CONC. CLASS B (1-2-2) - 1.9 cu yds
 REINF. STEEL - 33 lbs



4-55
 5-27
 4-56
 5-27
 4-56
 5-27



18

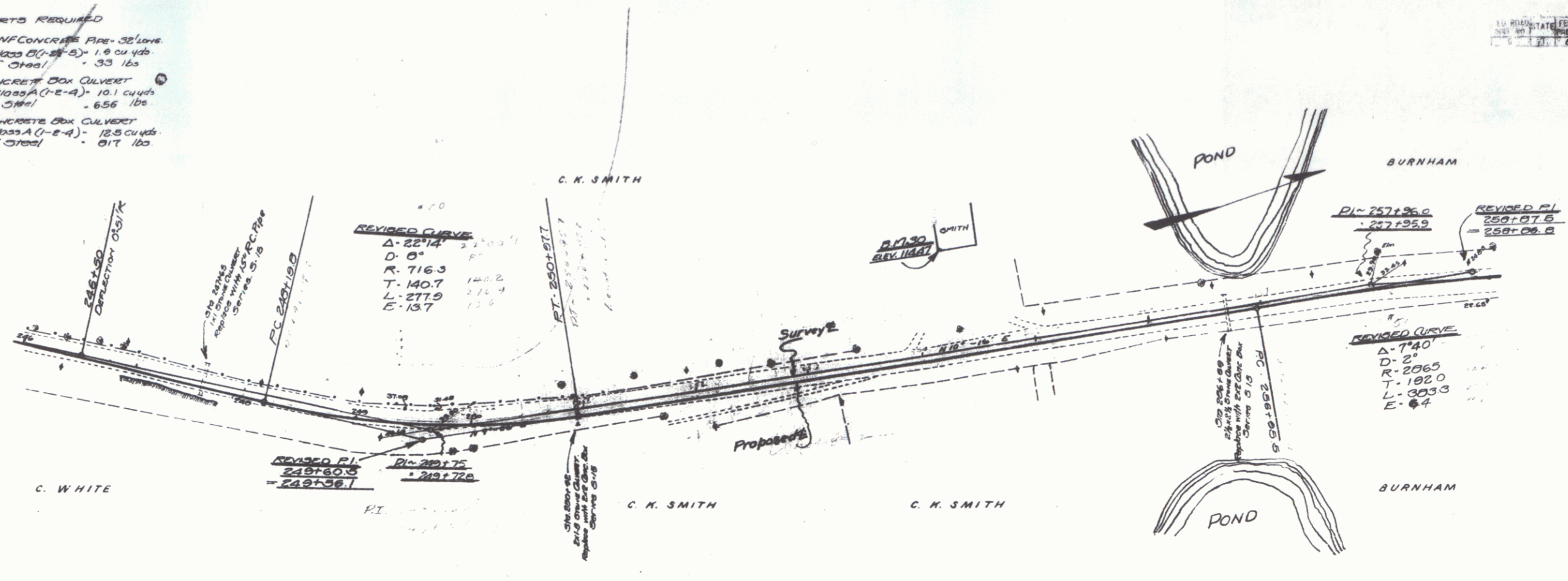
NEW CULVERTS REQUIRED

STA 247+65- 15" REINFC CONCRETE PIPE - 35' LONG
 CONC CLASS B (1-E-3) - 1.9 CU YDS
 REINF #3 @ 4' - 33 lbs

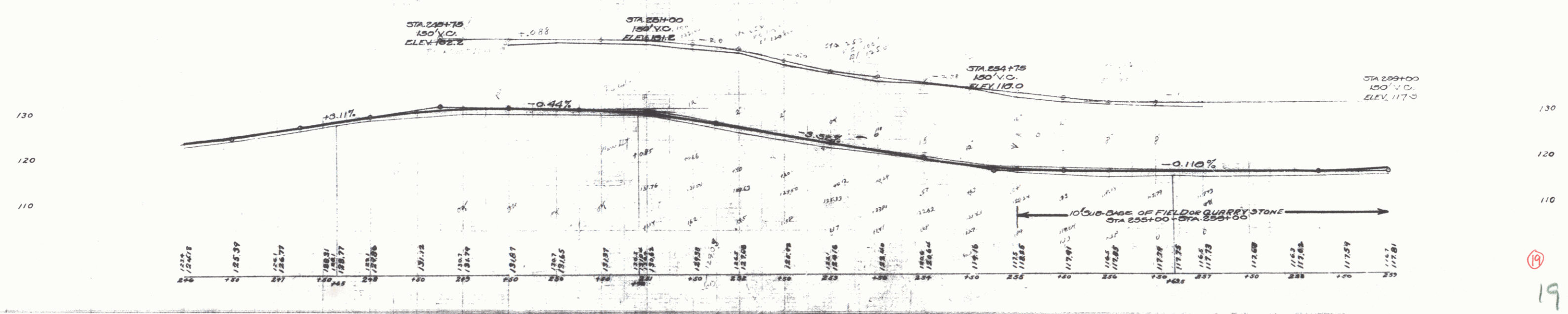
STA 250+52- 24" CONCRETE BOX CULVERT
 CONC CLASS A (1-E-4) - 10.1 CU YDS
 REINF #4 @ 1' - 656 lbs

STA 255+69- 24" CONCRETE BOX CULVERT
 CONC CLASS A (1-E-4) - 12.5 CU YDS
 REINF #4 @ 1' - 817 lbs

110 ROAD STATE FEEL AND DESIGN
 DIST. NO. 141 P. 101 1/2
 7/1 200 1927 19 87

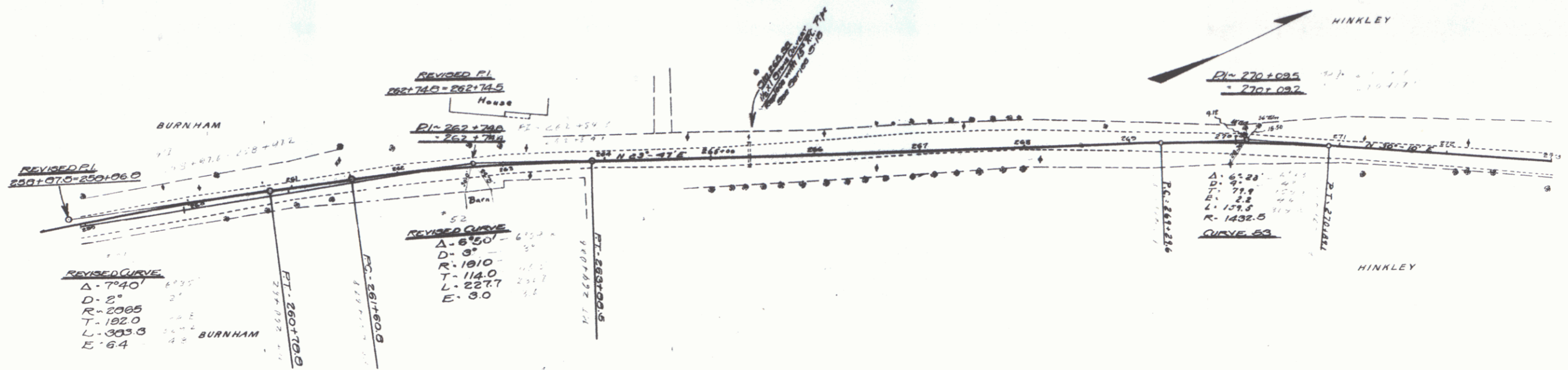


Use ORIGINAL GRADE ELEVATIONS

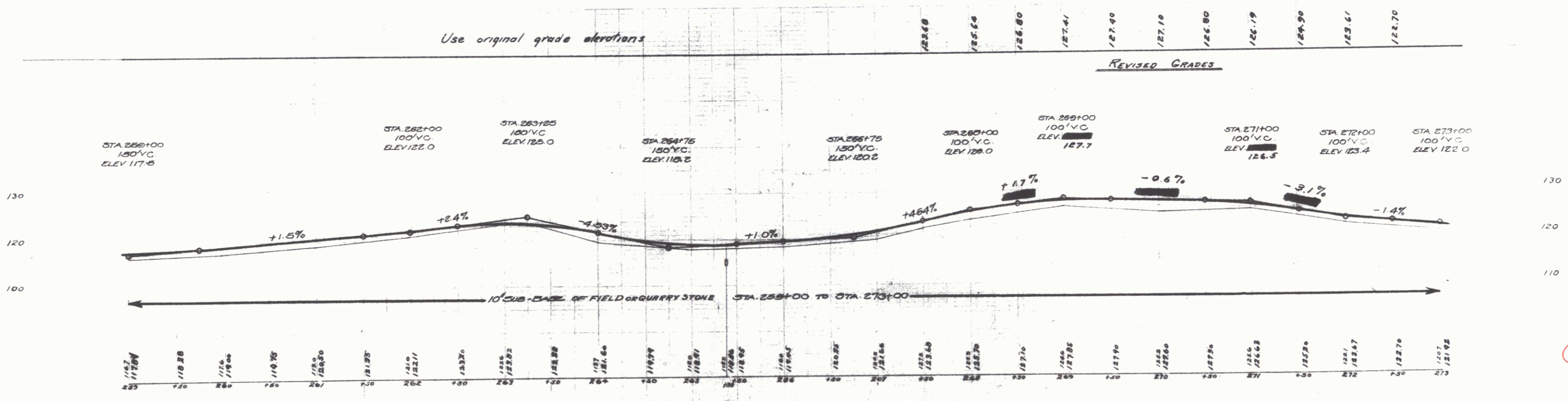


NEW CURBINGS REQUIRED
 STA 265+30 - 13' REINP CONCRETE PINE 30' LONG
 Conc. Class B(-2 1/2" - 3) - 5.3 cu yds
 Reinf. Steel - 331 lbs.

DATE: 1957 20 87

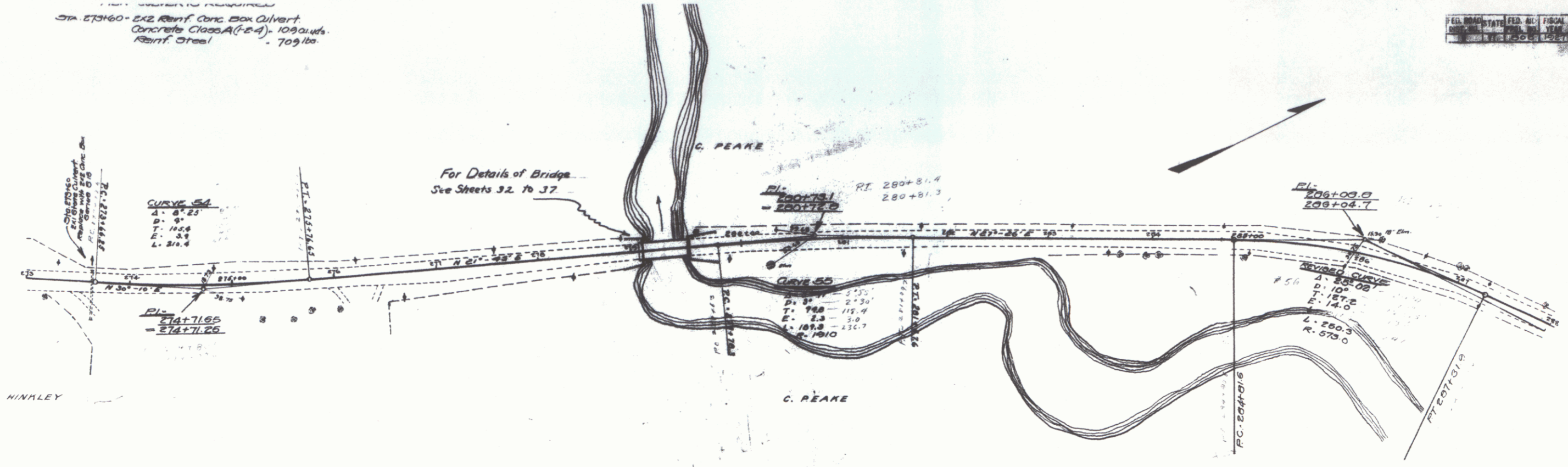


Use original grade elevations



STA 273+60 - 5x2 Reinf. Conc. Box Culvert.
Concrete Class A (f=4) - 109 cu yds.
Reinf. Steel - 709 lbs.

For Details of Bridge
See Streets 32, 36, 37



NEW CULVERTS REQUIRED
 STA 291+90- 15' REIN. CONCRETE PIPE 30' LONG
 CONCRETE CLASS 20 (4-8" x 19 cu yds)
 REINF. STEEL - 33 lbs

FIELD, ROAD, UTILITY, AND
 SURVEYING INSTRUMENTS
 MADE IN U.S.A. 1957

