

**WOOD GUARD RAIL REQUIRED**

LEFT	
STA. 55+00 TO STA. 56+70 - LENGTH 20 FT.	
• 55+16 • 56+00 • 04	
RIGHT	
STA. 47+00 TO STA. 47+24 - LENGTH 24 FT.	
• 51+00 • 51+32 • 24	
• 54+56 • 55+20 • 64	
• 56+30 • 57+10 • 80	
• 58+16 • 59+00 • 84	
TOTAL FOR SHEET → 440 FT	

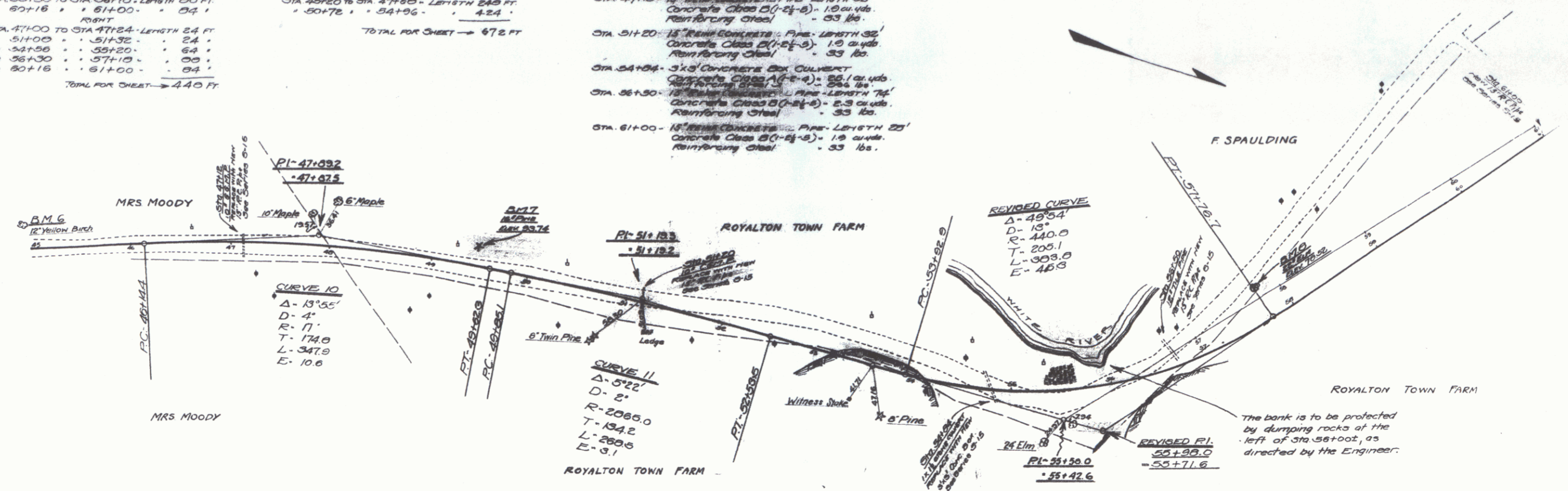
**CABLE GUARD RAIL REQUIRED**

LEFT	
STA. 45+20 TO STA. 47+60 - LENGTH 240 FT.	
• 50+76 • 54+96 • 424	
TOTAL FOR SHEET → 672 FT	

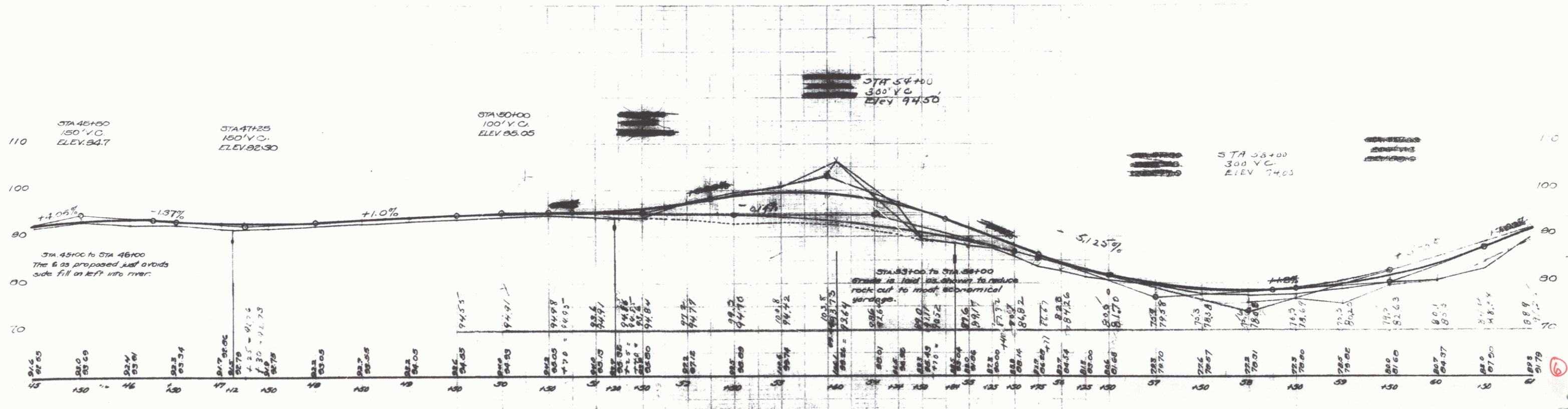
**PIPE CONCRETE REQUIRED**

STA. 47+10 - 12" REINFORCED CONCRETE PIPE - LENGTH 32'	
Concrete Class B (1-2-8) - 1.9 cu yds.	
Reinforcing Steel - 33 lbs.	
STA. 51+20 - 12" REINFORCED CONCRETE PIPE - LENGTH 32'	
Concrete Class B (1-2-8) - 1.9 cu yds.	
Reinforcing Steel - 33 lbs.	
STA. 54+56 - 3x6 CONCRETE BOX CULVERT	
Concrete Class A (1-4) - 56.1 cu yds.	
Concrete Class B (1-2-8) - 2.5 cu yds.	
Concrete Class C (1-1-6) - 5.3 cu yds.	
Reinforcing Steel - 33 lbs.	
STA. 56+30 - 12" REINFORCED CONCRETE PIPE - LENGTH 24'	
Concrete Class B (1-2-8) - 1.9 cu yds.	
Reinforcing Steel - 33 lbs.	
STA. 61+00 - 12" REINFORCED CONCRETE PIPE - LENGTH 20'	
Concrete Class B (1-2-8) - 1.9 cu yds.	
Reinforcing Steel - 33 lbs.	

10. PLAN STATE 1200' HORIZ. SCALE 1" = 100' 11. ELEV. 1" = 10'



5.2  
5.2  
5.2  
5.2  
5.2



6