

WOOD GUARD RAIL REQUIRED

LEFT	RIGHT
STA 30+00 TO STA 31+12 - LENGTH 24 FT	STA 30+00 TO STA 31+12 - LENGTH 24 FT
33+30 - 33+62 - 24'	33+30 - 33+62 - 24'
34+00 - 34+26 - 26'	34+00 - 34+26 - 26'
34+30 - 35+12 - 24 FT	34+30 - 35+12 - 24 FT
35+30 - 35+62 - 24'	35+30 - 35+62 - 24'
36+00 - 36+07 - 24'	36+00 - 36+07 - 24'
41+40 - 41+72 - 24'	41+40 - 41+72 - 24'
42+56 - 43+00 - 24'	42+56 - 43+00 - 24'
TOTAL FOR SHEET - 192 FT	

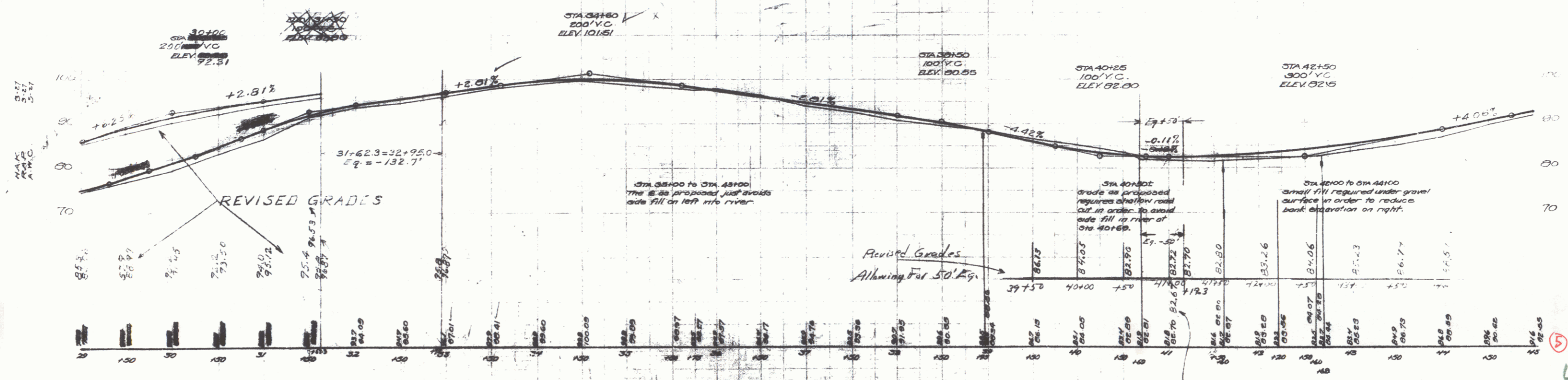
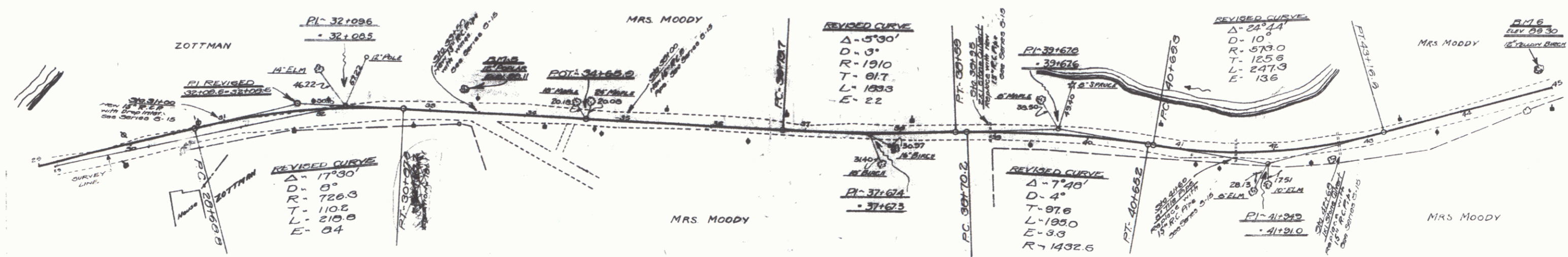
CABLE GUARD RAIL REQUIRED

LEFT	RIGHT
STA 29+00 TO STA 29+25 - LENGTH 25 FT	STA 29+00 TO STA 29+25 - LENGTH 25 FT
34+00 - 44+26 - 576'	34+00 - 44+26 - 576'
TOTAL FOR SHEET - 1026 FT	

NEW CULVERTS REQUIRED

STA 31+00 - 18" REIN. CONCRETE PIPE - 30' LONG WITH 24" INLET Concrete Class A (C-2-4) - 1.0 cu yds Reinforcing Steel - 1.2 cu yds	Sta. 41+60 - 18" REIN. CONCRETE PIPE - 30' LONG Concrete Class B (C-2-5) - 1.5 cu yds Reinforcing Steel - 33 lbs
STA 33+50 - 18" REIN. CONCRETE PIPE - 30' LONG WITH WINGS Concrete Class A (C-2-4) - 1.0 cu yds Reinforcing Steel - 60 lbs	Sta. 42+00 - 18" REIN. CONCRETE PIPE - 42' LONG Concrete Class B (C-2-5) - 2.3 cu yds Reinforcing Steel - 33 lbs
STA 35+00 - 18" REIN. CONCRETE PIPE - 20' LONG Concrete Class B (C-2-5) - 2.3 cu yds Reinforcing Steel - 33 lbs	
Sta. 39+95 - 18" REIN. CONCRETE PIPE - 25' LONG Concrete Class B (C-2-5) - 2.7 cu yds Reinforcing Steel - 33 lbs	

NO.	DATE	BY	REVISION
1			
2			



4