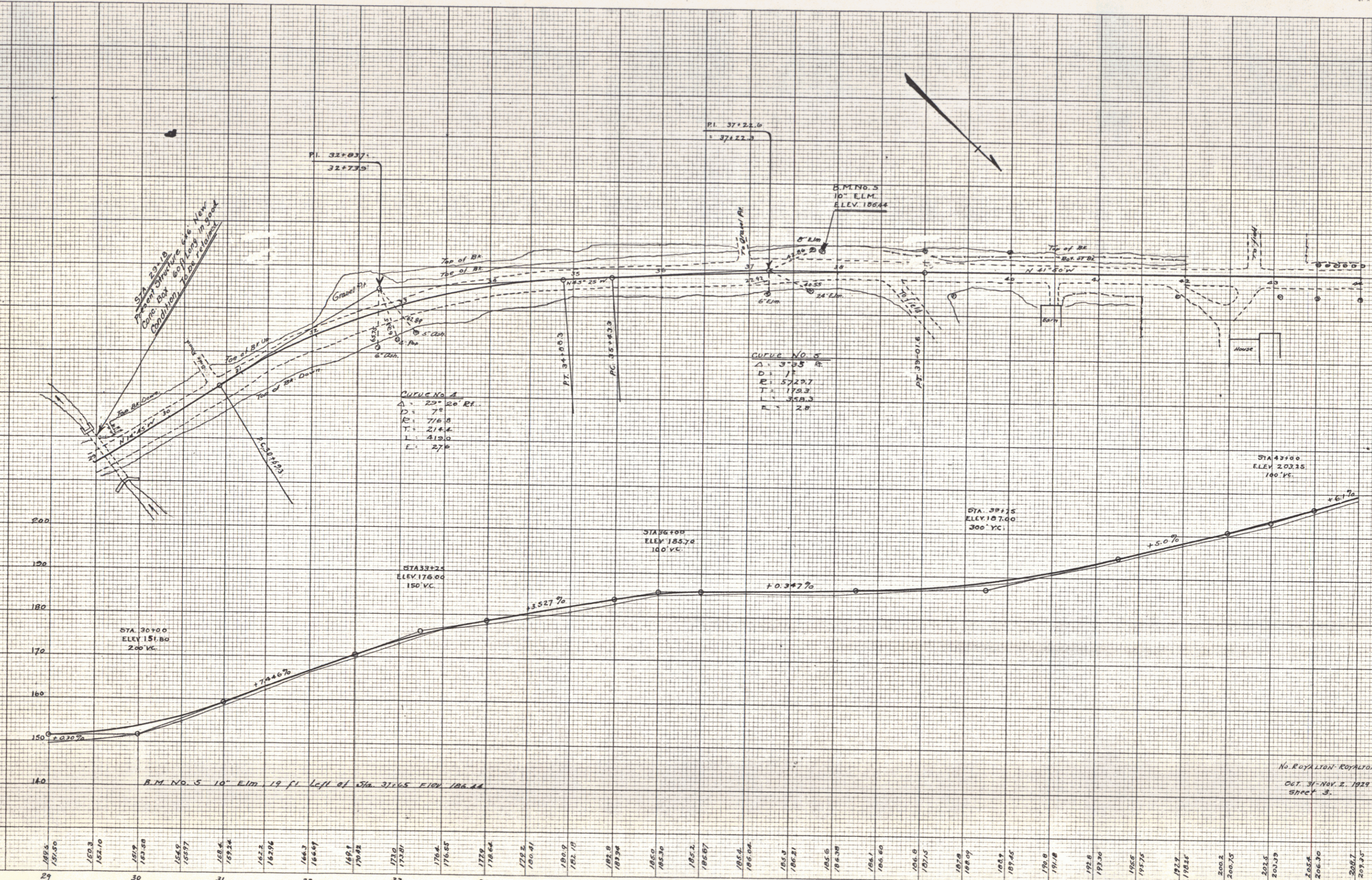


B.M. No. 1 Ledge 26 ft. E. of Sta. 3+05 Elev. 100.0
 B.M. No. 2 18" Elm. 18 ft. W. of Sta. 10+62 Elev. 120.35

PLANS COMPLETED NOV. 5, 1923	
1st REV.	Character of Revision Date

TOWN OF ROYALTON
 No. ROYALTON - BETHEL ROAD.
 OCT. NOV. 1923 PUTNAM
 STREET 1.



Sta 29+10
Proposed Structure 46' High
Comp. Box with Light in front
Condition Top of Structure

CURVE NO. 4
Δ = 29° 20' RT.
D = 79'
E = 716.8
T = 216.4
L = 419.0
R = 270'

CURVE NO. 5
Δ = 3° 05' RT.
D = 17'
E = 5729.7
T = 178.3
L = 358.3
R = 200'

R.M. NO. 5 10' E.L.M. 19 ft Left of Sta 31+65 ELEV 186.22

No. ROYALTON-ROYALTON-BELHEL ROAD.
Oct. 21 - Nov. 2, 1929
SHEET 3.