

INDEX OF SHEETS

SHEET NO.	TITLE PAGE
1	TITLE PAGE
2	TYPICAL CROSS-SECTION OF IMPROVEMENT 2 1/2" CRUSHED GRAVEL MIXED IN PLACE SURFACE COURSE, WITH REFINED TAR, ITEMS 25 & 30
3	BANKING AND WIDENING TABLES

STATE OF VERMONT
STATE HIGHWAY DEPARTMENT

PLAN AND PROFILE OF PROPOSED
STATE HIGHWAY

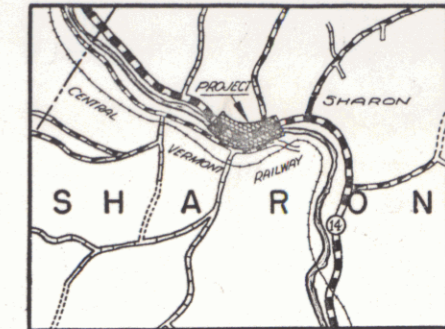
FEDERAL AID PROJECT
TOWN OF SHARON Pin# 00R738

VERMONT ROUTE 14

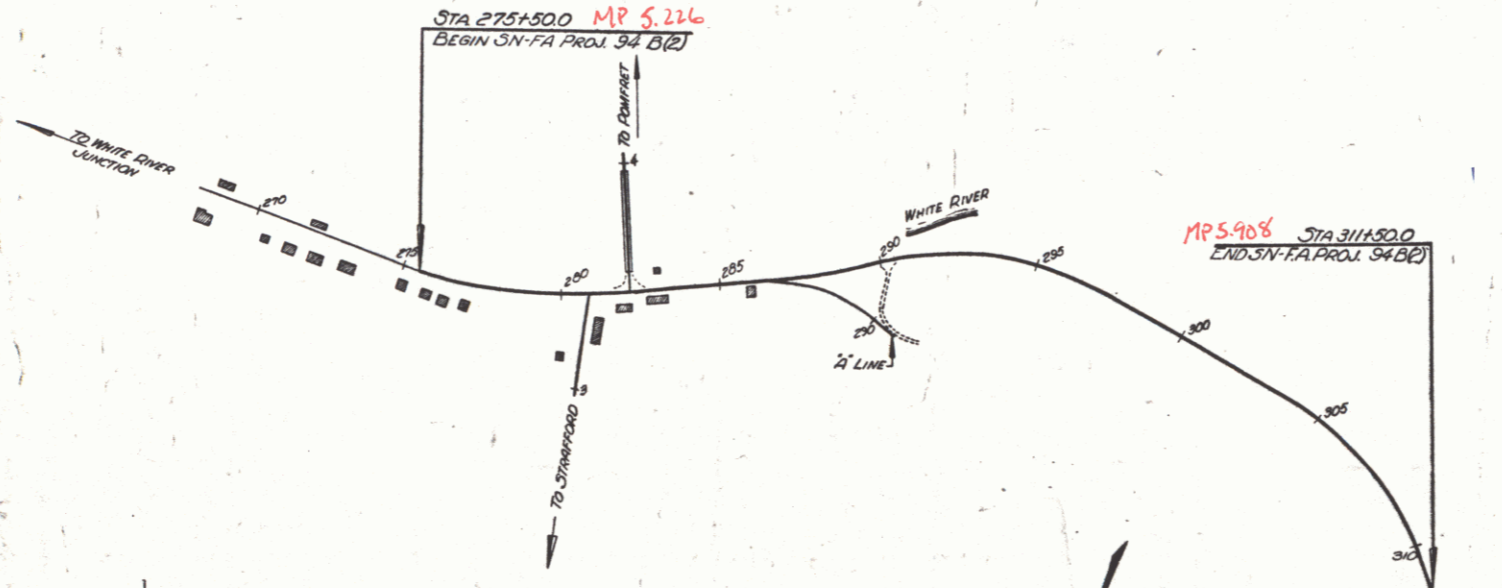
WHITE RIVER JUNCTION-ROYALTON ROAD
BEGINNING AT A POINT 664 FEET EAST OF THE INTERSECTION WITH THE TOWN ROAD TO POMFRET,
ACROSS THE WHITE RIVER, IN SHARON VILLAGE AND EXTENDING WESTERLY ON VT. ROUTE 14
0.681 MILES

LENGTH OF PROJECT: 3600 FEET=0.681 MILES

FED. ROAD DIST. NO.	STATE	FED. AID PROJ. NO.	FISCAL YEAR	SHEET NO.	TOTAL SHEETS
9	VT.	94B(2)	1942	1	3



SCALE: 1"=1 MILE



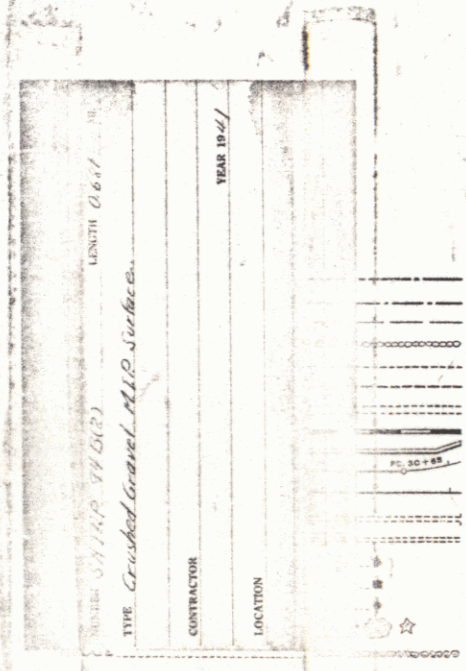
Documentation shows
MP 6.439-7.461

RIGHT-OF-WAY DIVISION
TOWN FILE

PERPETUAL
Rte of VT 14
(To Be Returned To R.O.W. Division)

APPROVED: JUNE 23, 1941
H. W. Stewart
COMMISSIONER OF HIGHWAYS
SUBMITTED BY ORDER OF THE STATE HIGHWAY BOARD

Project No. SN-FAP 94B(2)



GROUND ELEVATION	DATUM	LINE
.....
GRADE ELEVATION	DATUM	LINE
.....

CURVE DATA

DEFLECTION ANGLE.....	Δ
DEGREE OF CURVE.....	D
RADIUS OF CURVE.....	R
TANGENT DISTANCE.....	T
LENGTH OF CURVE.....	L
EXTERNAL DISTANCE.....	E
POINT OF INTERSECTION.....	P. I.
POINT OF CURVE.....	P. C.
POINT OF TANGENT.....	P. T.
POINT ON TANGENT.....	P. O. T.

SCALES

TITLE	1"=300'
TYPICAL	1"=2'
PLAN	1"=2'
PROFILE HORIZONTAL	1"=100'
PROFILE VERTICAL	1"=10'
CROSS SECTIONS	1"=10'

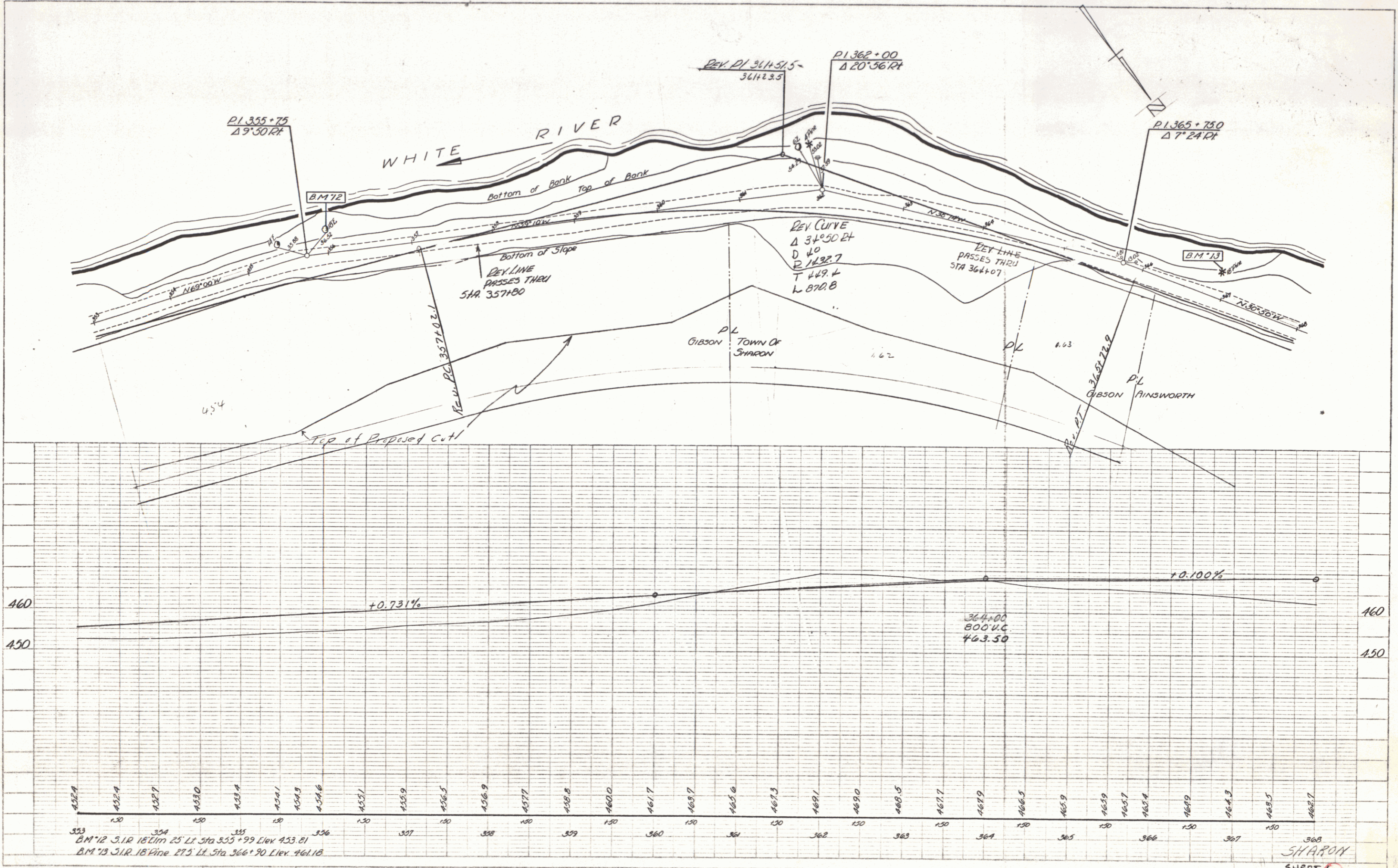
THESE PLANS ARE SUBJECT TO SUCH REVISIONS AS MAY BE REQUIRED BY THE PUBLIC ROADS ADMINISTRATION OR THE COMMISSIONER OF HIGHWAYS.
CONSTRUCTION IS TO BE CARRIED ON IN ACCORDANCE WITH THE PLANS AND THE STANDARD ROAD AND BRIDGE SPECIFICATIONS OF 1936, AS APPROVED DECEMBER 29TH, 1939 BY THE PUBLIC ROADS ADMINISTRATION, INCLUDING ALL SUBSEQUENT APPROVED REVISIONS AND SUCH REVISED SPECIFICATIONS AND SPECIAL PROVISIONS AS ARE SUBMITTED WITH THE PLANS.

APPROVED: <u>June 19, 1941</u> C. P. [Signature] ROAD ENGINEER	APPROVED: <u>June 23, 1941</u> H. W. Stewart DISTRICT HIGHWAY COMMISSIONER	SERIES FAP NO. 94B(2) FILED SHEET 1 OF 3
--	--	---

DIST. # 4 PLANS 1

PLAN
 DATE: 11-30
 DRAWN BY: Rogers
 CHECKED BY: [blank]
 PROJECT: [blank]

PROFILE
 DATE: 11-30
 DRAWN BY: Rogers
 CHECKED BY: [blank]
 PROJECT: [blank]



PLAN
 DATE 11-20
 BY B. W. B. / J. R. S.
 CHECKED BY J. R. S.
 SCALE 1" = 40'

PROFILE
 DATE 11-20
 BY B. W. B. / J. R. S.
 CHECKED BY J. R. S.
 SCALE 1" = 10'

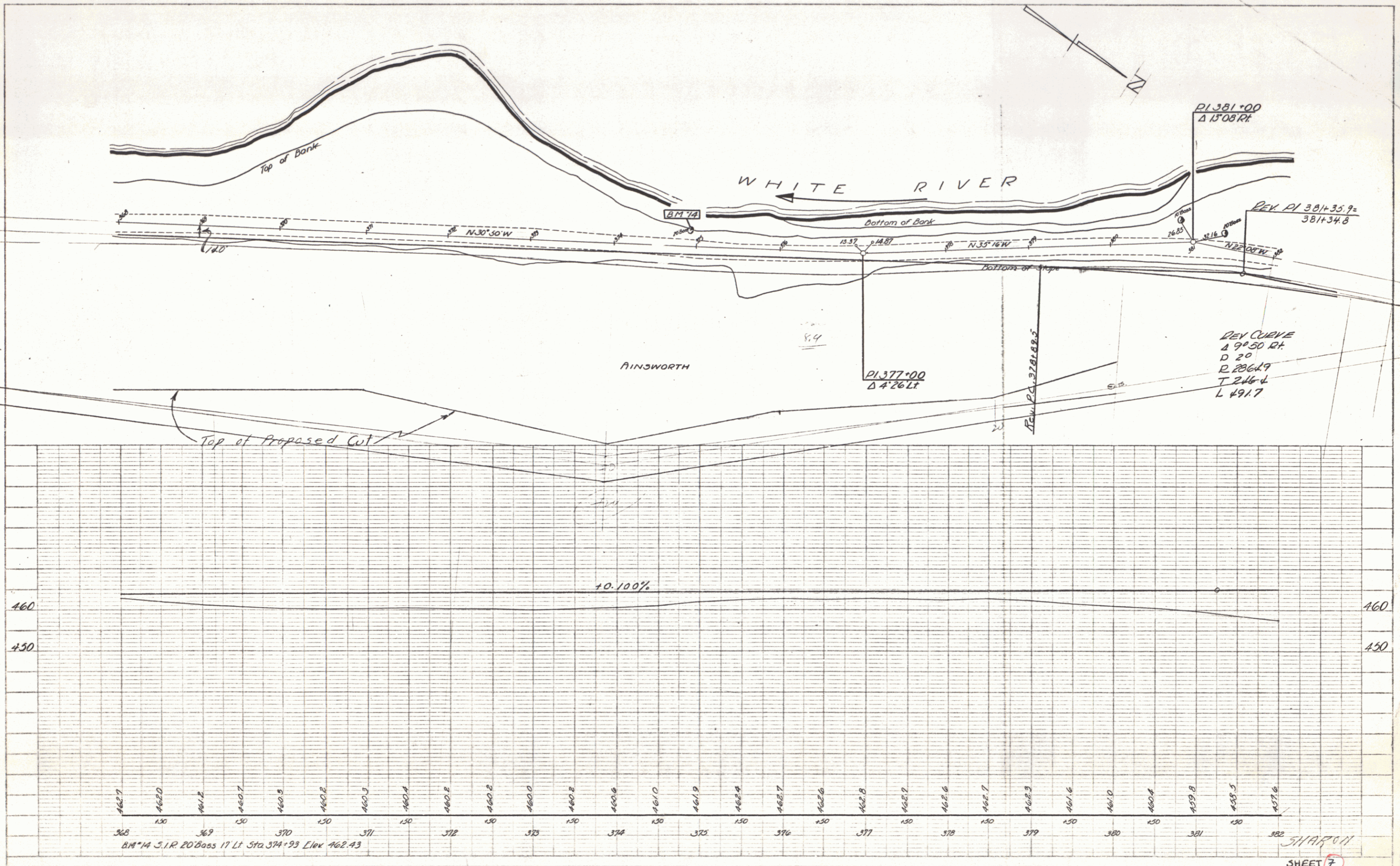
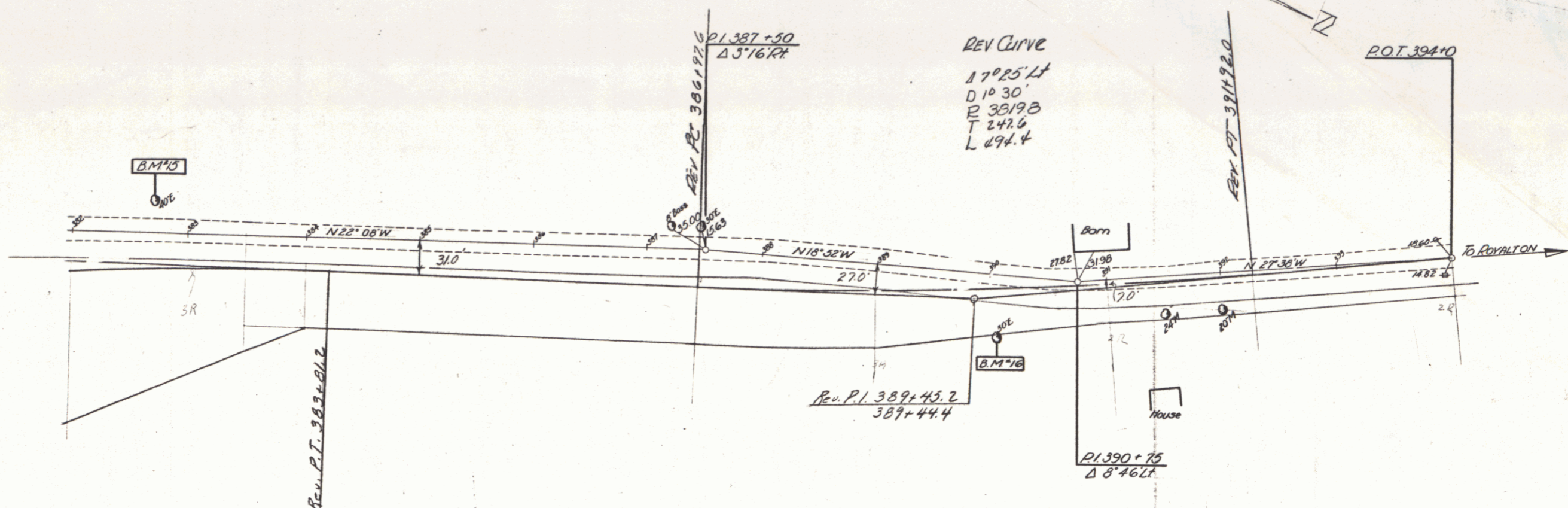


PLATE 1-PLAN-PR. FILE 4 P. 11. W. & S. SHARON
 METEOROLOGICAL SERVICE
 P. A. T. CO. INC. DRAWING

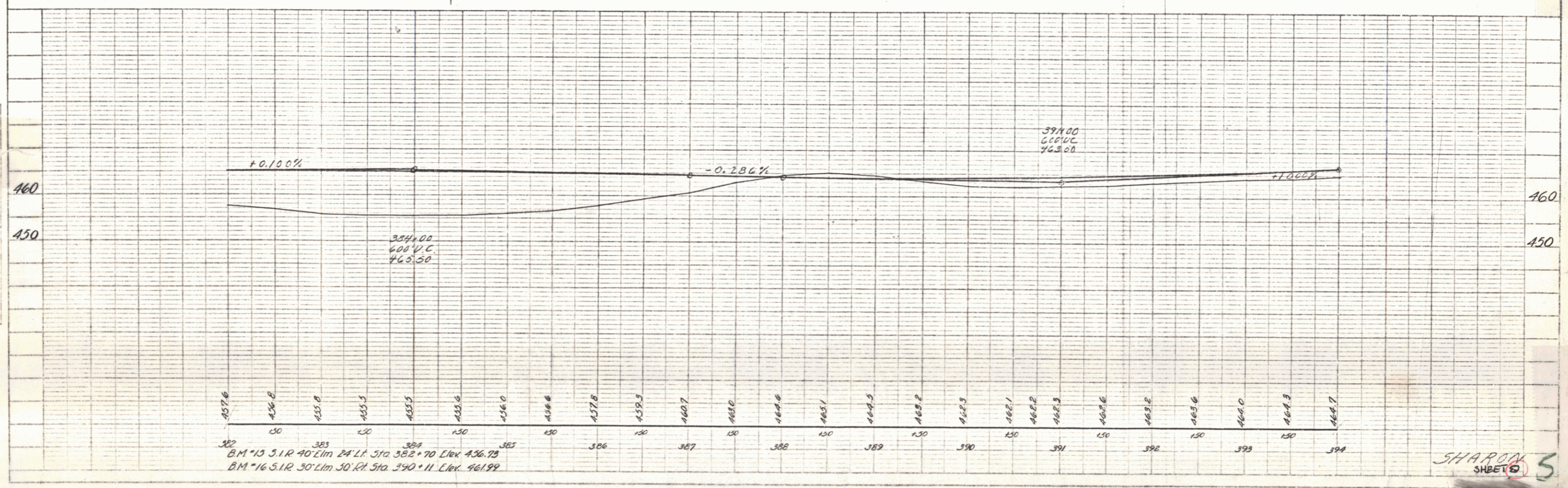
4

PLAN
 SHEET NO. 11.40
 DATE BOOK 11.40
 CHECKED BY [Signature]
 DRAWN BY [Signature]
 PROJECT [Signature]

PLAN
 SHEET NO. 11.40
 DATE BOOK 11.40
 CHECKED BY [Signature]
 DRAWN BY [Signature]
 PROJECT [Signature]



REV CURVE
 Δ 10°25'LT
 D 1030'
 P 3819.8
 T 242.6
 L 494.4



B.M. 13 S.I.R. 40' Lim 24' LT Sta 382+70 Elev 436.78
 B.M. 16 S.I.R. 30' Lim 50' RT Sta 390+11 Elev 461.99

SHARON
 SHEETS 5