

INDEX OF SHEETS

SHEET NO.	TITLE	PAGE
1	TYPICAL CROSS-SECTION OF IMPROVEMENT	1
2	BANKING AND WIDENING TABLES	2
3	PLAN AND PROFILE	3
4	DETAILS OF BOX CULVERT	4
5	STANDARD STRUCTURE SHEET	5
6	PIPE CULVERTS	6
7	GUARD RAIL	7
8	STANDARD UNDERDRAIN	8
9	ONE COURSE CEMENT CONCRETE SIDEWALK	9
10	BARRICADES SIGNS & LIGHTS	10
11	ROUNDING OF SLOPES	11
12	CROSS SECTIONS	12

Standard Structure Sheets  
 Approved by the Chief Engineer  
 5-28 July 11, 1933  
 5-30 August 15, 1934  
 5-31 July 25, 1934

STATE OF VERMONT  
 STATE HIGHWAY DEPARTMENT

PLAN AND PROFILE OF PROPOSED  
 STATE HIGHWAY

FEDERAL AID PROJECT

TOWN OF SHARON Pin# 00R737

WHITE RIVER JCT. — ROYALTON ROAD

BEGINNING AT A POINT 664 FT. EAST OF THE INTERSECTION WITH THE TOWN ROAD TO POMFRET,  
 ACROSS THE WHITE RIVER, IN SHARON VILLAGE AND EXTENDING WESTERLY ON ROUTE 14 0.681 MILES.

LENGTH OF PROJECT 3600 FT. = 0.681 MILES

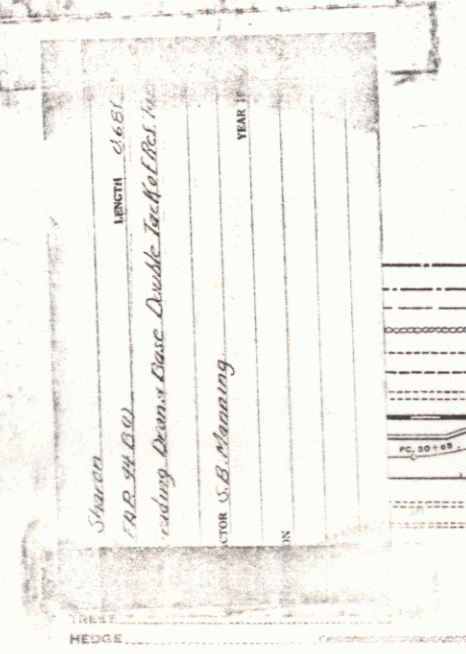
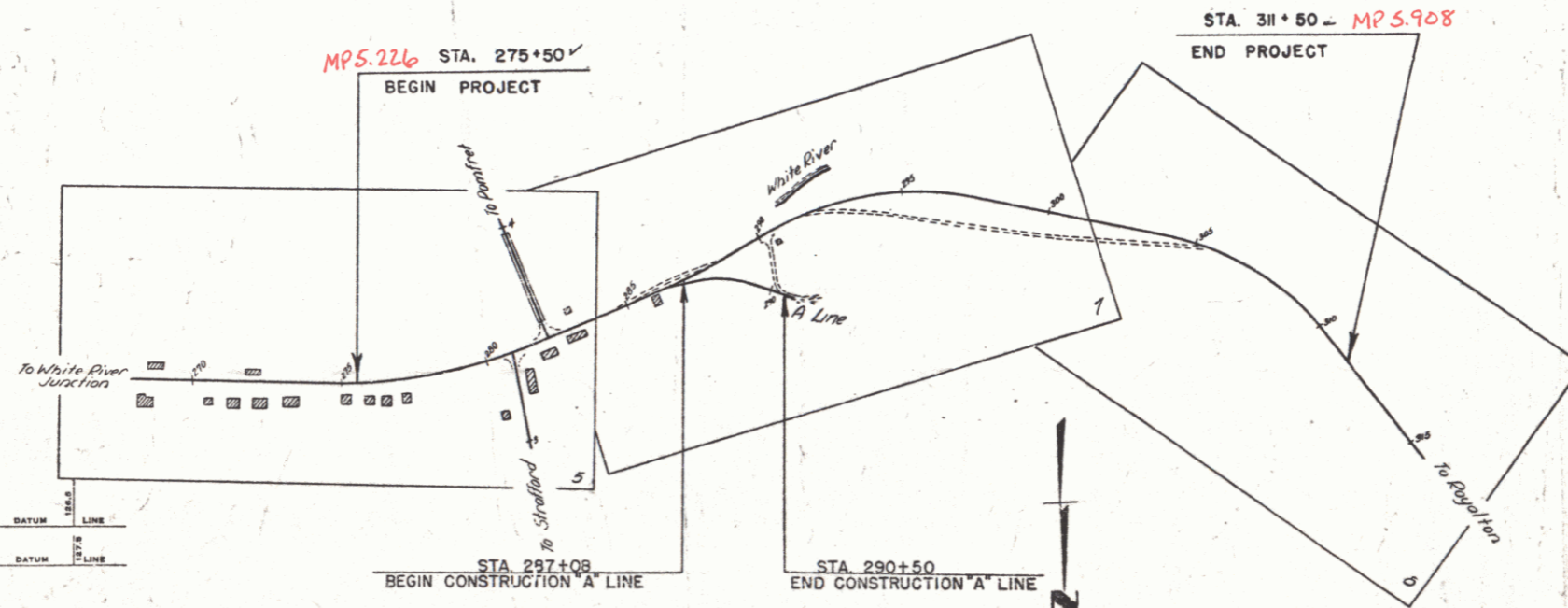
FED. ROAD DIST. NO.	STATE	FED. AID PROJ. NO.	FISCAL YEAR	SHEET NO.	TOTAL SHEETS
9	VT.	9480	1941	1	47



RECORD PLANS  
 A.C.B.

RIGHT-OF-WAY DIVISION  
 TOWN FILE:  
 PERPETUAL  
 Town of SHARON  
 (To Be Returned To R.O.W. Division)

APPROVED: Aug 30, 1934  
[Signature]  
 COMMISSIONER OF HIGHWAYS  
 SUBMITTED BY ORDER OF THE STATE HIGHWAY BOARD



RECORD PLANS  
 SHARON - FILE 9480  
 Contractor - S.B. Manning  
 1934

GROUND ELEVATION	DATUM	LINE
.....	.....	.....
GRADE ELEVATION	DATUM	LINE
.....	.....	.....

CURVE DATA

DEFLECTION ANGLE	..... Δ
DEGREE OF CURVE	..... D
RADIUS OF CURVE	..... R
TANGENT DISTANCE	..... T
LENGTH OF CURVE	..... L
EXTERNAL DISTANCE	..... E
POINT OF INTERSECTION	..... P. I.
POINT OF CURVE	..... P. C.
POINT OF TANGENT	..... P. T.
POINT ON TANGENT	..... P. O. T.

MM 0520-0589

THESE PLANS ARE SUBJECT TO SUCH REVISIONS AS MAY BE REQUIRED BY THE PUBLIC ROADS ADMINISTRATION OR THE COMMISSIONER OF HIGHWAYS.  
 CONSTRUCTION IS TO BE CARRIED ON IN ACCORDANCE WITH THE PLANS AND THE STANDARD ROAD AND BRIDGE SPECIFICATIONS OF 1934, AS APPROVED DECEMBER 29TH, 1934 BY THE PUBLIC ROADS ADMINISTRATION, INCLUDING ALL SUBSEQUENT APPROVED REVISIONS AND SUCH REVISED SPECIFICATIONS AND SPECIAL PROVISIONS AS ARE SUBMITTED WITH THE PLANS.

APPROVED Aug 12, 1934 ROAD ENGINEER  
 APPROVED [Signature] DISTRICT HIGHWAY COMMISSIONER  
 SERIES FAP No. 3480 LEG.  
 SHEET 1 OF 47

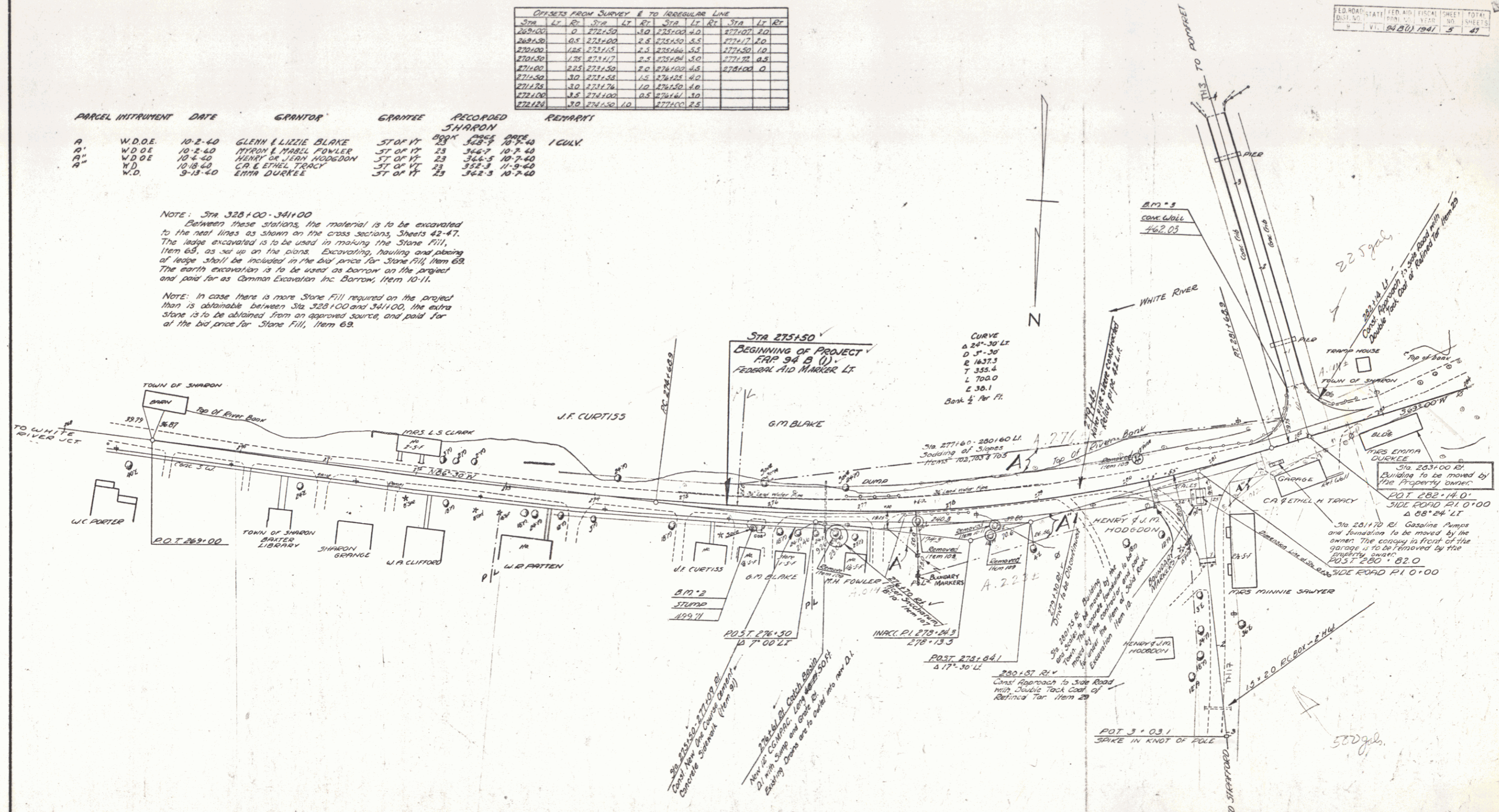
DIST. # 4 PLANS

OFFSETS FROM SURVEY E TO IRREGULAR LINE											
STA	LT	RT	STA	LT	RT	STA	LT	RT	STA	LT	RT
269+00	0	272+50	270	272+00	270	272+00	0	272+00	270	272+00	0
269+50	0.5	272+00	270	272+50	270	272+50	0.5	272+50	270	272+50	0.5
270+00	1.85	272+1.5	270	272+100	270	272+100	1.85	272+100	270	272+100	1.85
270+50	1.75	272+1.7	270	272+150	270	272+150	1.75	272+150	270	272+150	1.75
271+00	2.25	272+1.50	270	272+150	270	272+150	2.25	272+150	270	272+150	2.25
271+50	3.0	272+1.50	270	272+150	270	272+150	3.0	272+150	270	272+150	3.0
272+00	3.0	272+1.50	270	272+150	270	272+150	3.0	272+150	270	272+150	3.0
272+50	3.5	272+1.00	270	272+100	270	272+100	3.5	272+100	270	272+100	3.5
273+00	3.0	272+1.50	270	272+150	270	272+150	3.0	272+150	270	272+150	3.0

PARCEL INSTRUMENT	DATE	GRANTOR	GRANTEE	RECORDED	REMARK
A	W.D.O.E.	10-2-40	GLENN & LIZZIE BLAKE	ST OF VT 23	342.7 10-7-40
A'	W.D.O.E.	10-2-40	MYRON & MABEL FOWLER	ST OF VT 23	344.7 10-7-40
A''	W.D.O.E.	10-4-40	HENRY OR JERN HODGDON	ST OF VT 23	344.5 10-7-40
A'''	W.D.	10-18-40	GR & ETHEL TRACY	ST OF VT 23	352.3 11-9-40
A''''	W.D.	9-12-40	EMMA DUCKEE	ST OF VT 23	344.3 10-7-40

NOTE: STA 328+00-341+00  
 Between these stations, the material is to be excavated to the next lines as shown on the cross sections, Sheets 42-47. The ledge excavated is to be used in making the Stone Fill, Item 63, as set up on the plans. Excavating, hauling and placing of ledge shall be included in the bid price for Stone Fill, Item 63. The earth excavation is to be used as borrow on the project and paid for as Common Excavation Inc. Borrow, Item 10-11.

NOTE: In case there is more Stone Fill required on the project than is obtainable between Sta. 328+00 and 341+00, the extra stone is to be obtained from an approved source, and paid for at the bid price for Stone Fill, Item 63.



ESTIMATED QUANTITIES

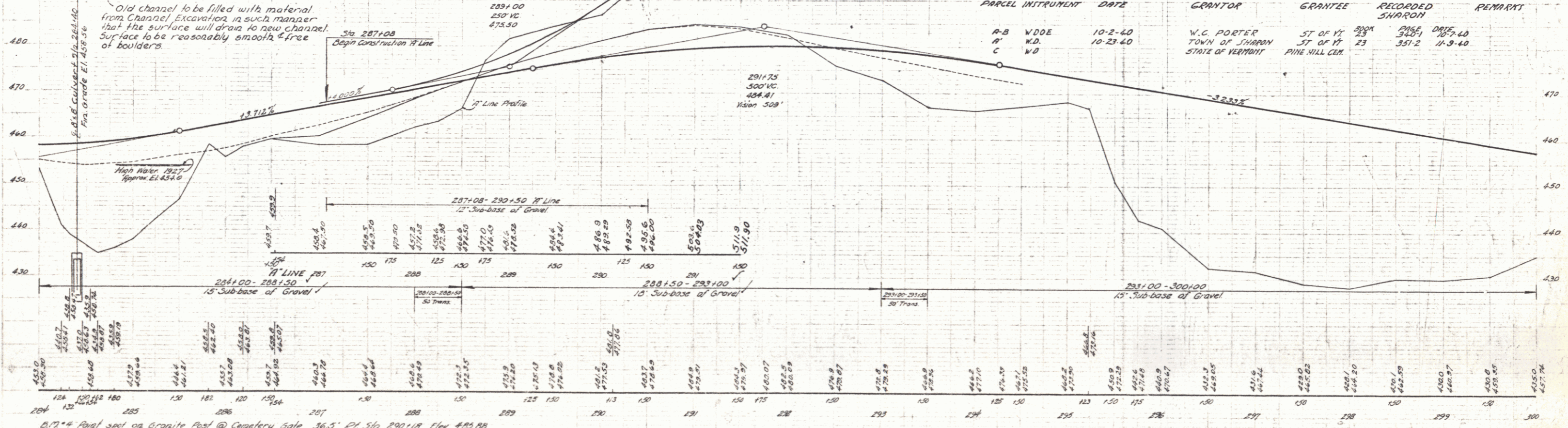
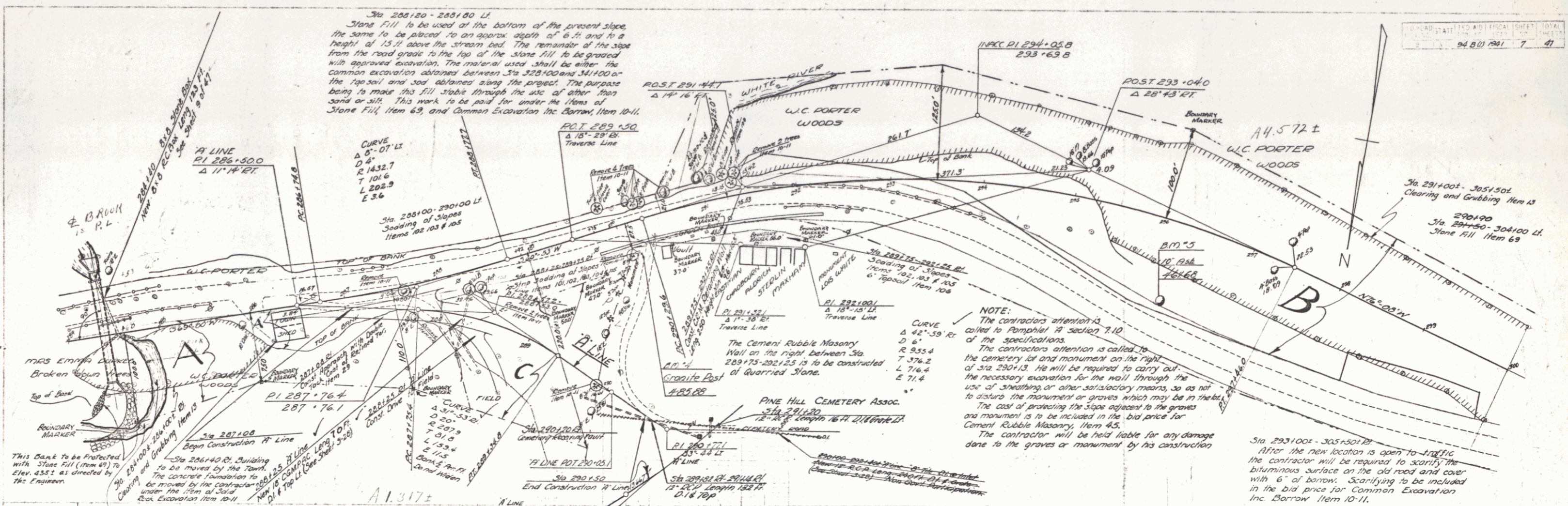

SHARON

Surveyed by  
 Designed by  
 Drawn by  
 Traced by  
 Checked by

Series 522 No. 94 B (1) Filed  
 Sheet 5 of 47 Sheets

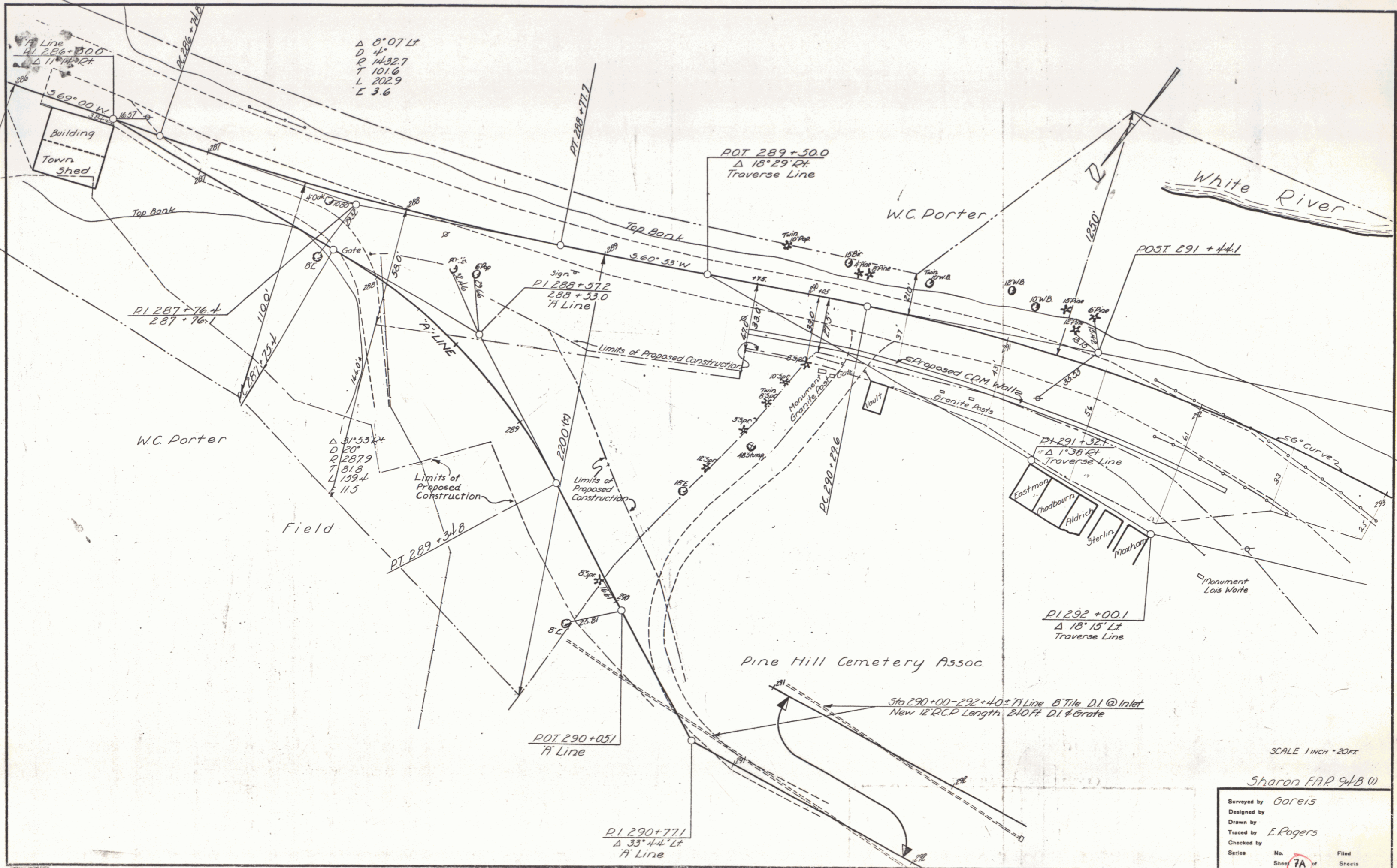
1" = 100'





PARCEL	INSTRUMENT	DATE	GRANTOR	GRANTEE	RECORDED SHARON	REMARKS
A-B	W.D.E.	10-2-60	W.C. PORTER	ST OF VT	330K	DRIVE 40
A'	W.D.	10-23-60	TOWN OF SHARON	ST OF VT	23	351-2 11-9-40
C	W.D.		STATE OF VERMONT	PINE HILL CEM.		

B.17 \* 4 Road spot on Granite Post @ Cemetery Gate 36.5' E of Sta 290+18 Elev 461.88  
 B.17 \* 3 Spike in Root to Post 85' E of Sta 296+18 Elev 461.63



SCALE 1 INCH = 20 FT

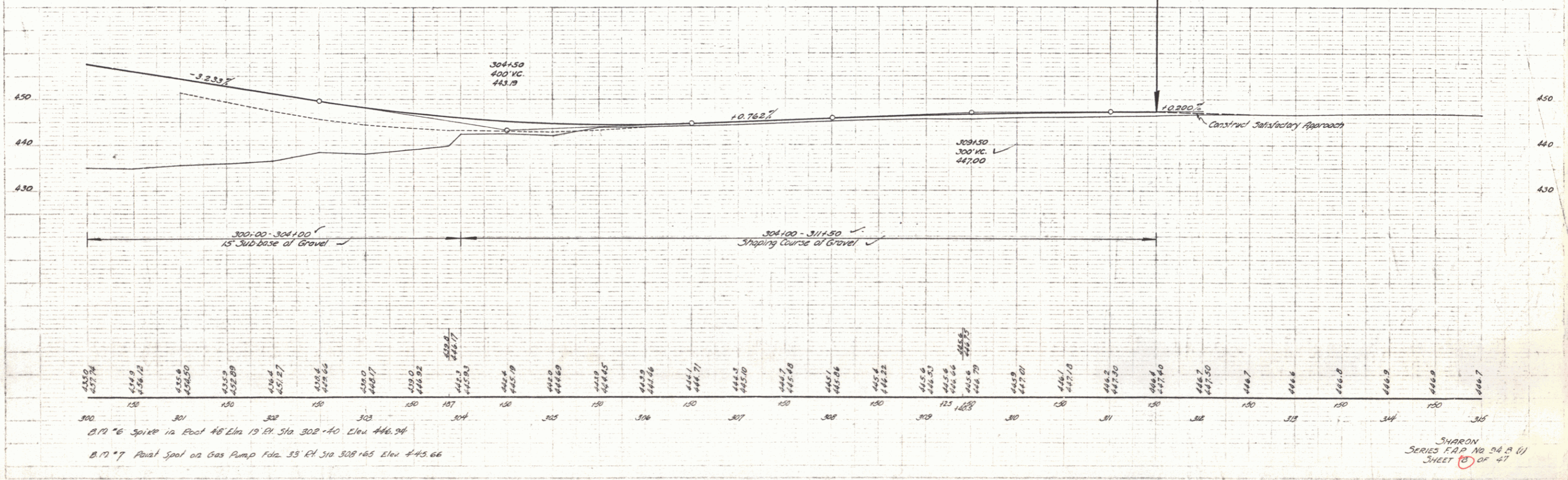
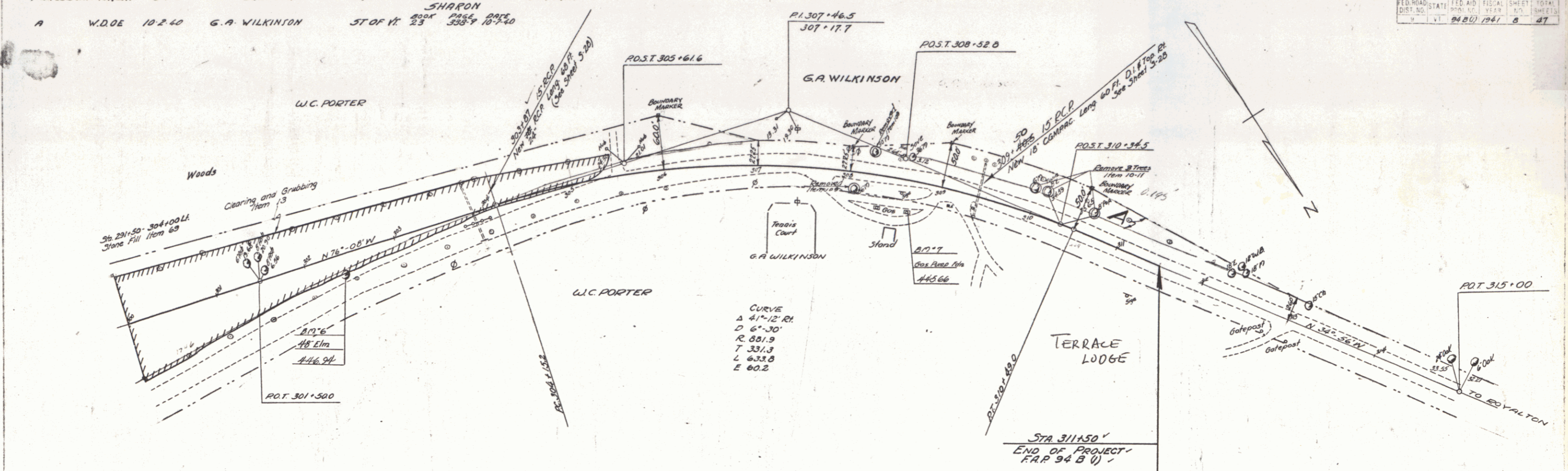
Sharon FAP 9/18/01

Surveyed by	Goreis
Designed by	
Drawn by	
Traced by	E. Rogers
Checked by	
Series	No. 7A of 8 Sheets

5

PARCEL INTRUMENT DATE GRANTOR GRANTEE RECORDED REMARKS  
 A W.D.06 10-2-40 G.A. WILKINSON ST OF VT SHARON  
 23 233 107-40

FED. ROAD STATE FED. AID FISCAL SHEET TOTAL  
 DIST. NO. Vt 94 B(1) 1941 5 47



6

