

INDEX OF SHEETS

SHEET NO.	TITLE PAGE
1	TYPICAL CROSS-SECTION OF IMPROVEMENT GRADING, BASE, & DRAINAGE WITH DOUBLE TACK COAT OF REFINED TAR-ITEM 29
2	BANKING AND WIDENING TABLES
3	PLAN AND PROFILE STA.
4-6	DETAILS OF 12"x12" RC BOX
7	STANDARD STRUCTURE SHEET 52.8 PIPE CULVERTS
8	53.0 GUARD RAIL
9	53.11 LIGHTS, SIGNS, & BARRICADES
10	CROSS SECTIONS

(To Be Returned to H.O.W. Division)  
 Form of 4-14  
 PERPETUAL  
 DOWN FILE  
 RIGHT-OF-WAY DIVISION

Standard Structure Sheets  
 Approved by the Chief Engineer  
 5-28 - July 11, 1933  
 5-30 - August 15, 1934

STATE OF VERMONT  
 STATE HIGHWAY DEPARTMENT

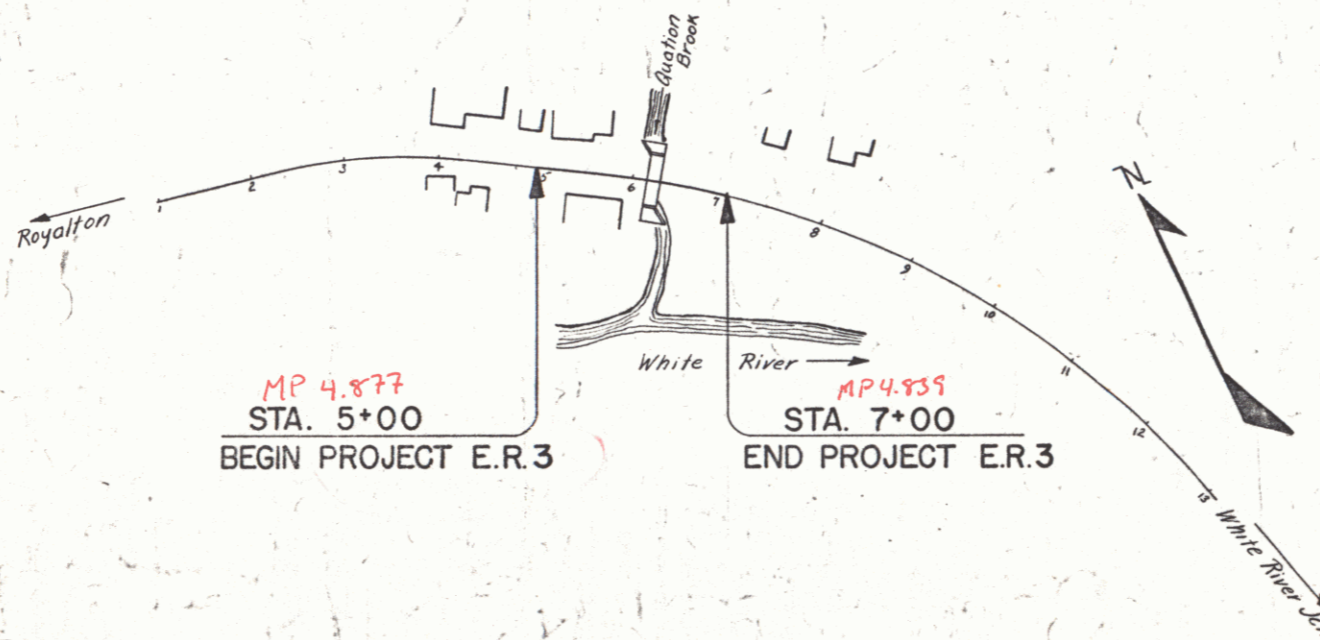
PLAN AND PROFILE OF PROPOSED  
 STATE HIGHWAY  
 PROJECT E.R.3

TOWN OF SHARON Pin# COR 735

ROYALTON-WHITE RIVER JCT. ROAD  
 BEGINNING AT A POINT 617 FT. SOUTHEASTERLY  
 FROM THE INTERSECTION WITH THE STRAFFORD  
 ROAD AND EXTENDING SOUTHEASTERLY 200 FT.

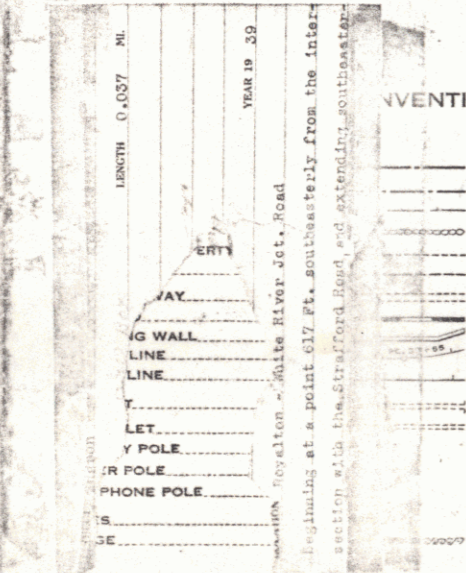
LENGTH OF PROJECT = 200.0 FT. = 0.037 MI.

FED. ROAD DIST. NO.	STATE	PROJ. NO.	FISCAL YEAR	SHEET NO.	TOTAL SHEETS
9	VT.	3	1939	1	13



APPROVED: RE-VT14  
 Nov. 21, 1935  
 Commissioner of Highways

MM0485



CONVENTIONAL SIGNS

GROUND ELEVATION	DATUM	LINE
GRADE ELEVATION	DATUM	LINE

CURVE DATA

DEFLECTION ANGLE	Δ
DEGREE OF CURVE	D
RADIUS OF CURVE	R
TANGENT DISTANCE	T
LENGTH OF CURVE	L
EXTERNAL DISTANCE	E
POINT OF INTERSECTION	P. I.
POINT OF CURVE	P. C.
POINT OF TANGENT	P. T.
POINT ON TANGENT	P. O. T.

Scales

Title	1"=100'
Typical	1"=2'
Plan	1"=20'
Profile	1"=10'
Cross-Sections	1"=5'

These plans are subject to such revisions as may be required by the Bureau of Public Roads or the Commissioner of Highways. Construction is to be carried on in accordance with the plans and Standard Road and Bridge Specifications of 1936 as approved December 29, 1936 by the Bureau of Public Roads including all subsequent approved revisions and such revised specifications and special provisions as are submitted with the plans.

RECOMMENDED  
 DISTRICT ENGINEER BUREAU OF PUBLIC ROADS  
 RECOMMENDED FOR APPROVAL  
 CHIEF ENGINEER BUREAU OF PUBLIC ROADS  
 APPROVED  
 DIRECTOR - BUREAU OF PUBLIC ROADS

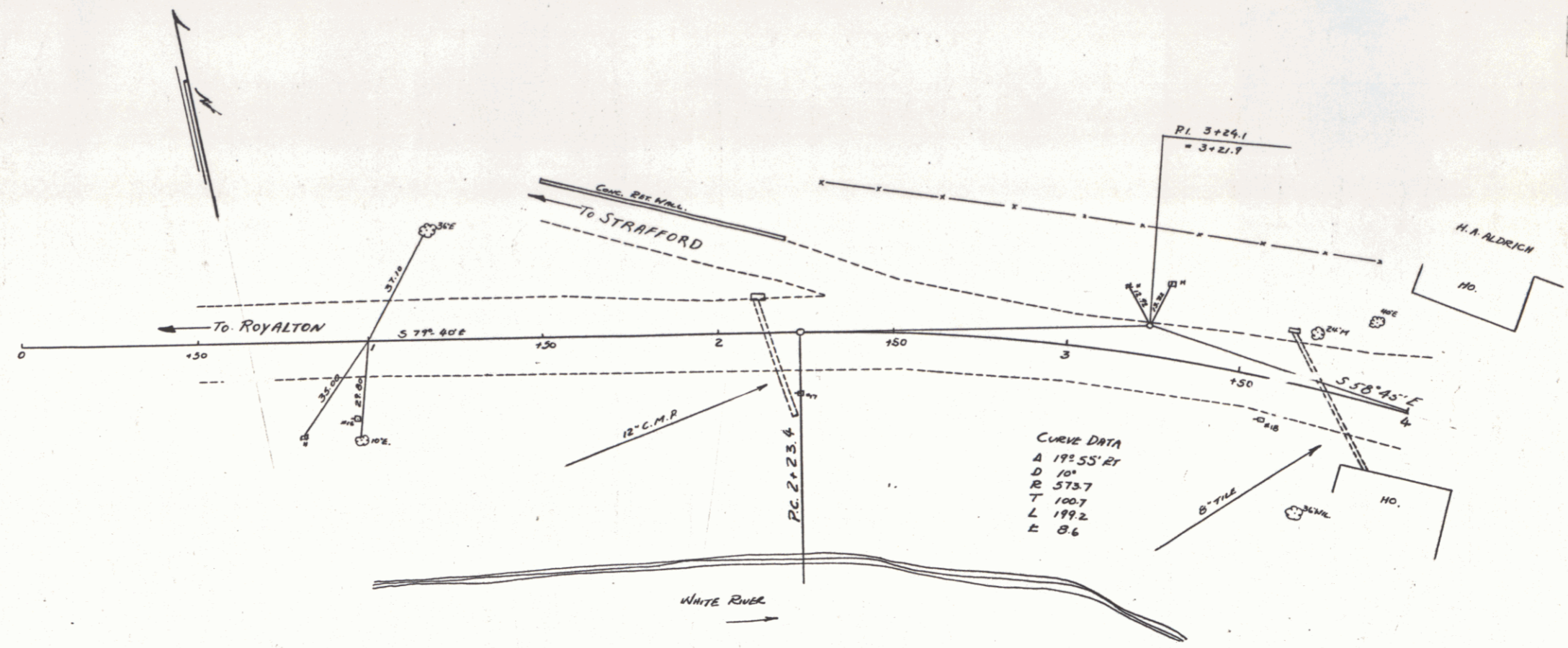
APPROVED: [Signature]  
 DISTRICT HIGHWAY COMMISSIONER

CORRECT: [Signature]  
 BRIDGE ENGINEER

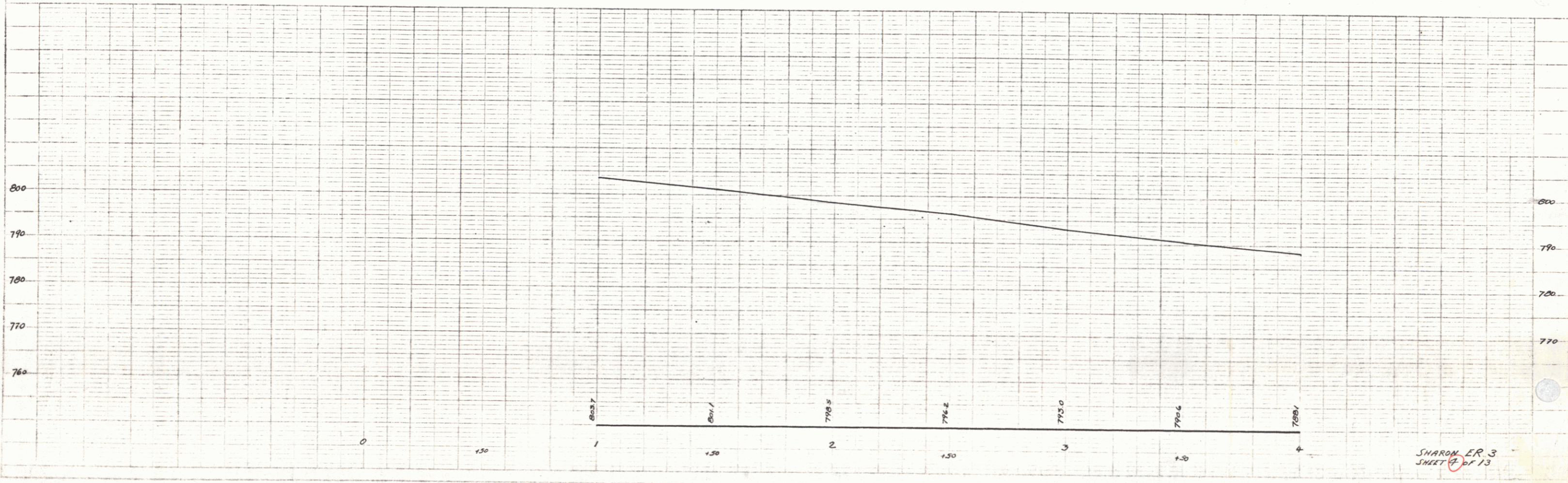
SERIES E.R. NO. 3 FILED  
 SHEET 1 OF 13

DIST. # 4 PLANS

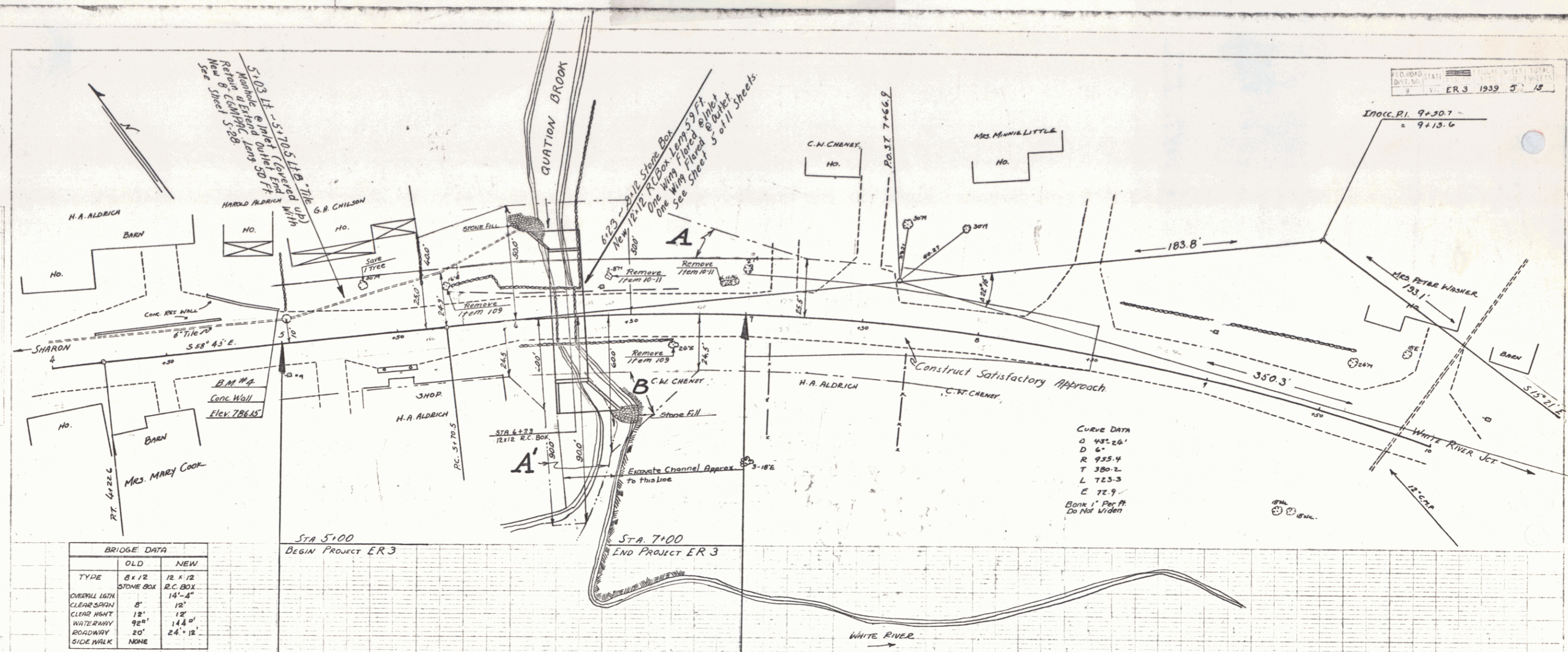
PLAN  
 NOTE BOOK  
 DATE



CURVE DATA  
 Δ 191.55' RT  
 D 101'  
 R 573.7  
 T 100.7  
 L 199.2  
 E 8.6



SHARON ER 3  
 SHEET 13



CURVE DATA

Δ	48° 26'
D	6"
R	933.4
T	389.2
L	723.3
E	72.9

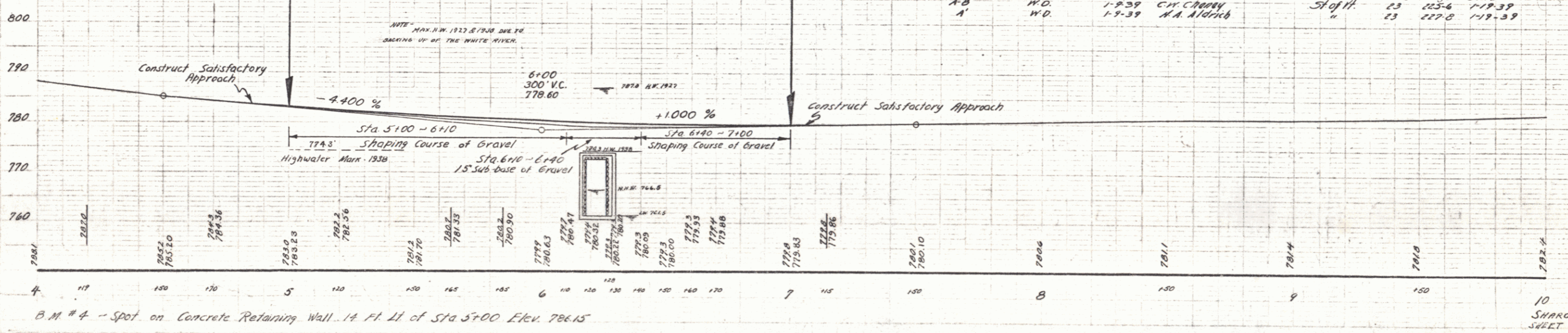
Bank 1' Per Ft  
 Do Not Viden

BRIDGE DATA

	OLD	NEW
TYPE	8 x 12	12 x 12
OVERALL LETH	STONE BOX	R.C. BOX
CLEARSPAN	14'-4"	14'-4"
CLEAR HEIGHT	8'	12'
WATERWAY	12'	12'
ROADWAY	92"	144"
SIDE WALK	20'	24' x 12'
	NONE	

Parcel Instrument Data

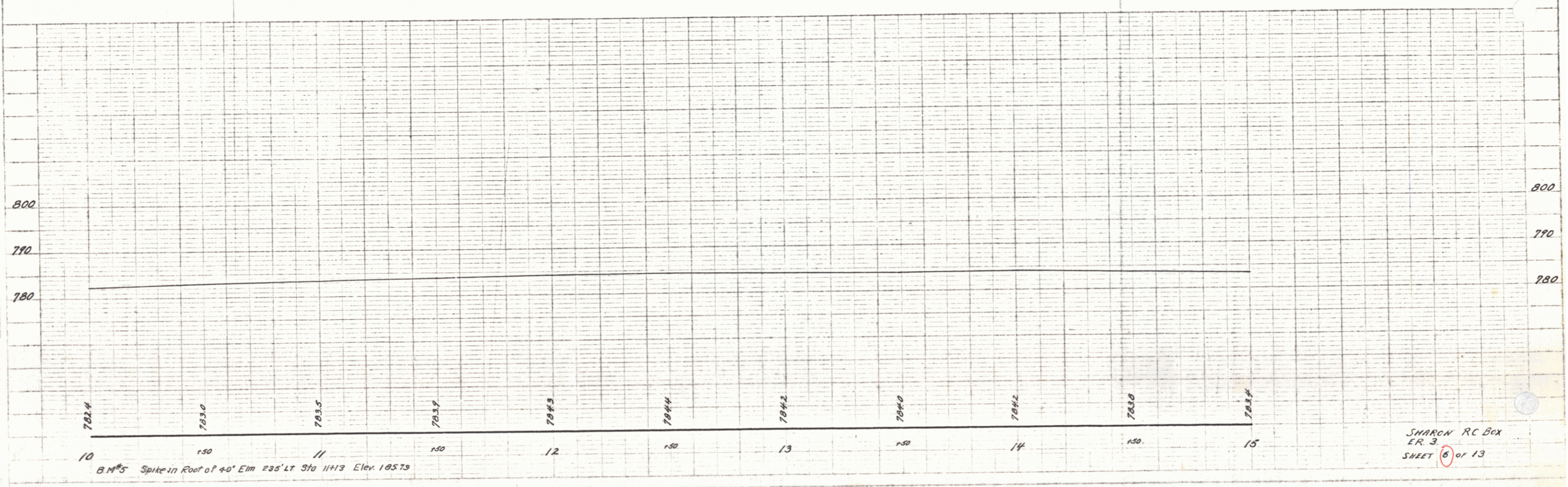
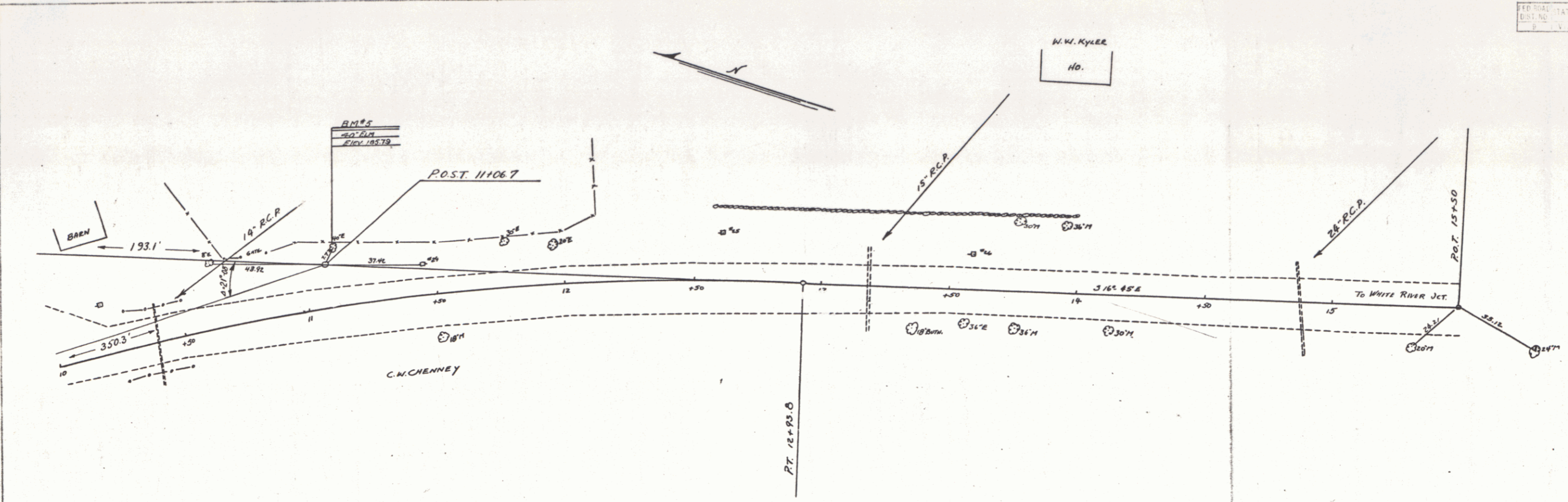
Parcel	Grantor	Grantor	Recorded	Remarks
A-B	W.D.	1-9-39	C.M. CHENEY	
A'	W.D.	1-9-39	H.A. ALDRICH	



B.M. # 4 - Spot on Concrete Retaining Wall - 14 Ft. Lt. of Sta 5+00 Elev. 786.15

FEDERAL STATE ...  
 DIST. NO. ...  
 E. V. ER 3 1932 6 13

PLAN ...  
 SHEET ...



B.M. 5 Spike in Roof of 40' Elm 235' LT. Sta 11113 Elev. 18579

SHARON RC Box  
 ER 3  
 SHEET 6 of 13