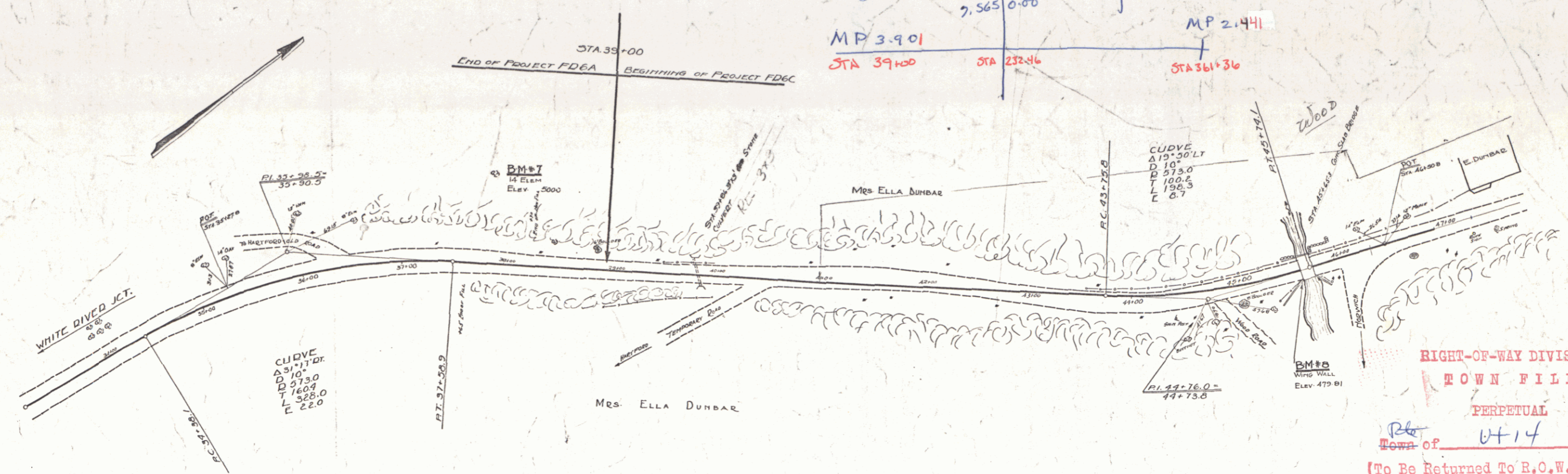
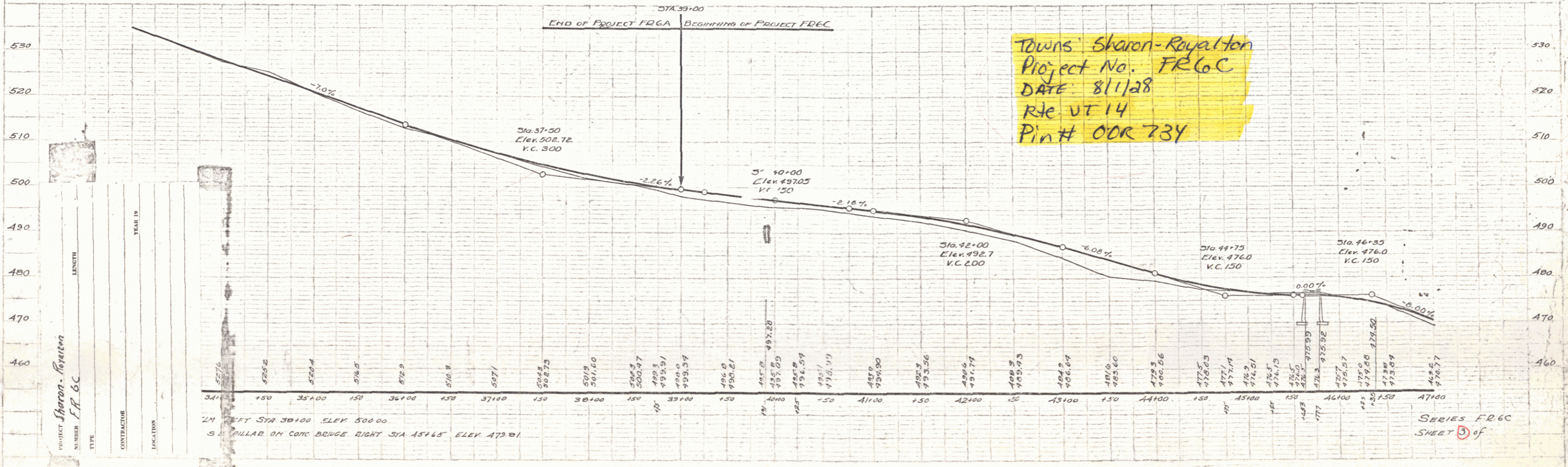


Sharon T/L Royalton  
 7,565 0+00  
 MP 3.901 STA 39+00 STA 232+46 STA 361+36  
 MP 2.441



RIGHT-OF-WAY DIVISION  
 TOWN FILE  
 PERPETUAL  
 Town of UT 14  
 (To Be Returned To R.O.W. Division)

Towns Sharon-Royalton  
 Project No. FR6C  
 DATE 8/1/28  
 Rte UT 14  
 Pin# 00R 734



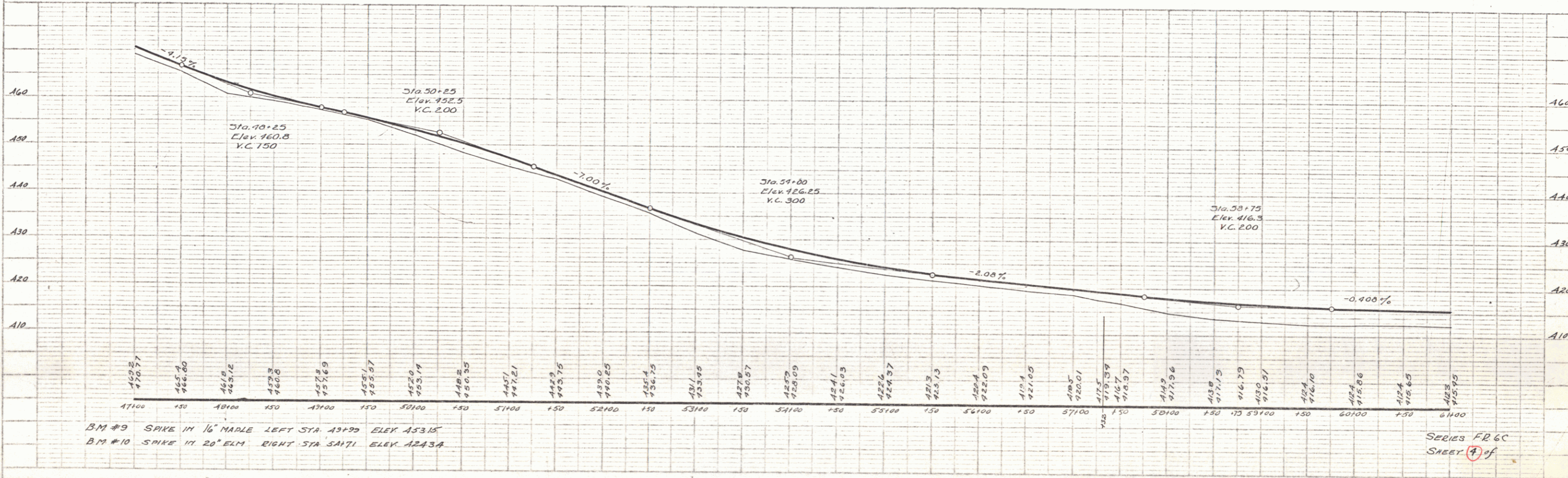
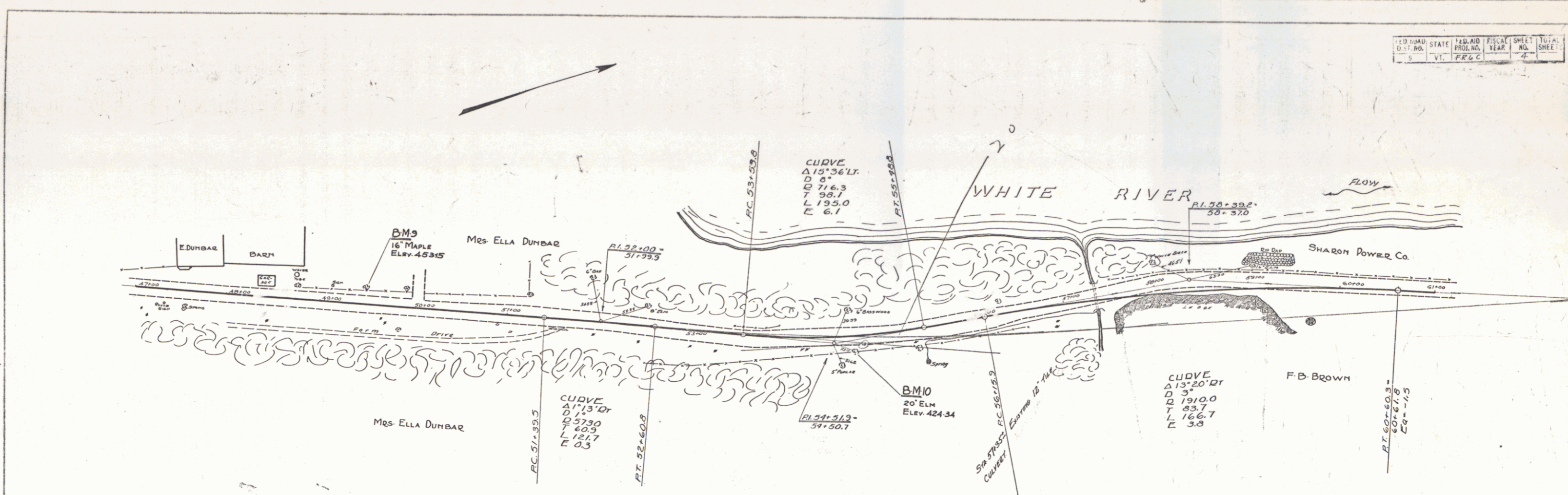
PLAN  
 DATE 8/1/28  
 DRAWN BY J.W.C.  
 CHECKED BY J.W.C.

PROFILE  
 DATE 8/1/28  
 DRAWN BY J.W.C.  
 CHECKED BY J.W.C.

PROJECT Sharon-Royalton  
 NUMBER FR 6C  
 TYPE  
 CONTRACTOR  
 LOCATION

24' WIDE STA 39+00 SLPK 500.00  
 S. PILLAR ON CONC BRIDGE RIGHT STA 45+45 ELEV. 479.01

SERIES FR 6C  
 SHEET 3 of 3



PLAN  
 DATE  
 DRAWN BY  
 CHECKED BY  
 SCALE

PROFILE  
 DATE  
 DRAWN BY  
 CHECKED BY  
 SCALE

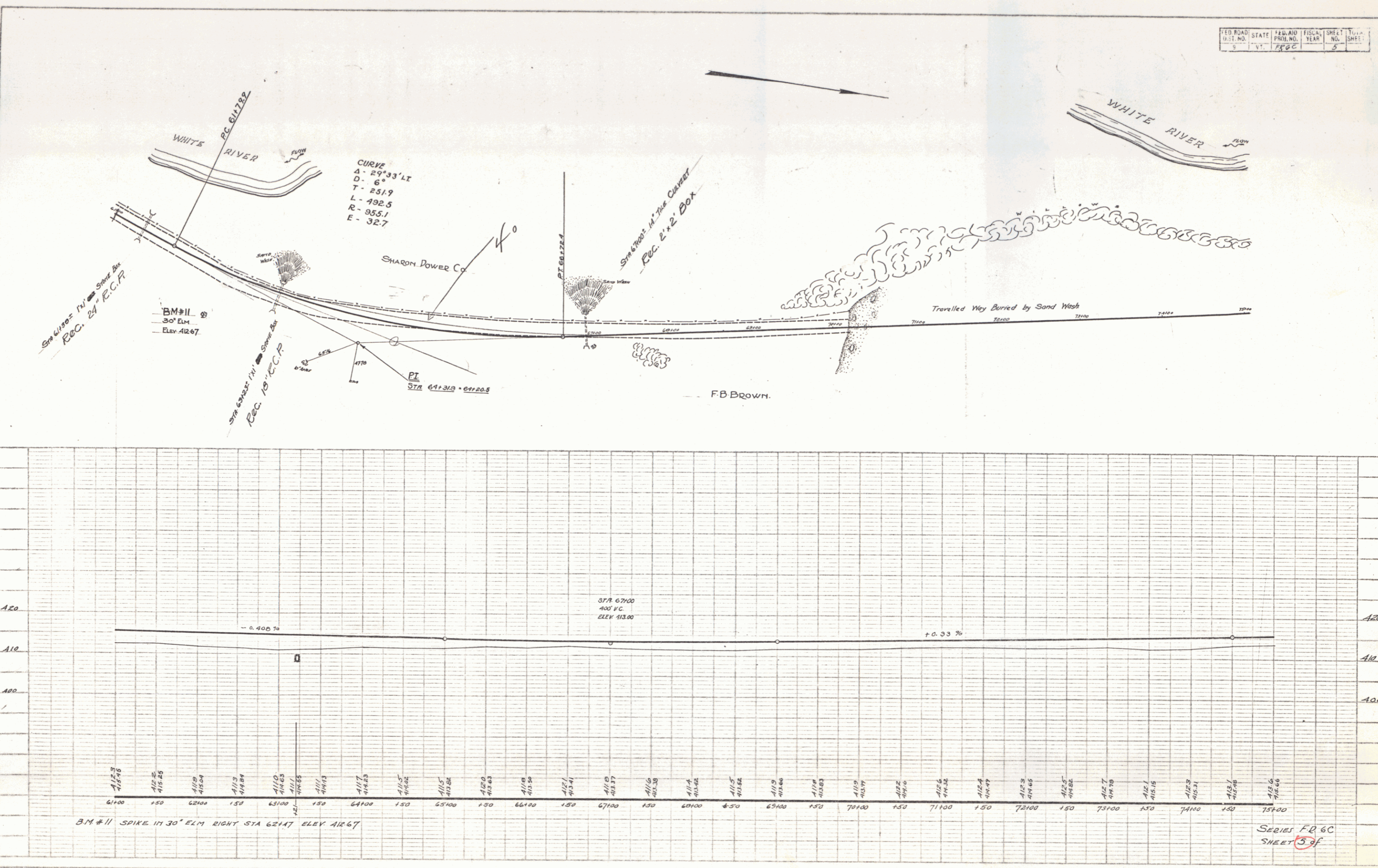
BM #9 SPIKE IN 16" MAPLE LEFT STA. 19+99 ELEV. 453.15  
 BM #10 SPIKE IN 20" ELM. RIGHT STA. 34+71 ELEV. 424.34

SERIES FB 6C  
 SHEET 4 of 4

FED. ROAD DIST. NO.	STATE	FED. AID PROJ. NO.	FISCAL YEAR	SHEET NO.	TOTAL SHEETS
5	Vt.	FFC		5	

PLAN	DATE	BY	CHKD.
DATE BOOK	REVISIONS	CHANGED	BY
NO.	BY	DATE	

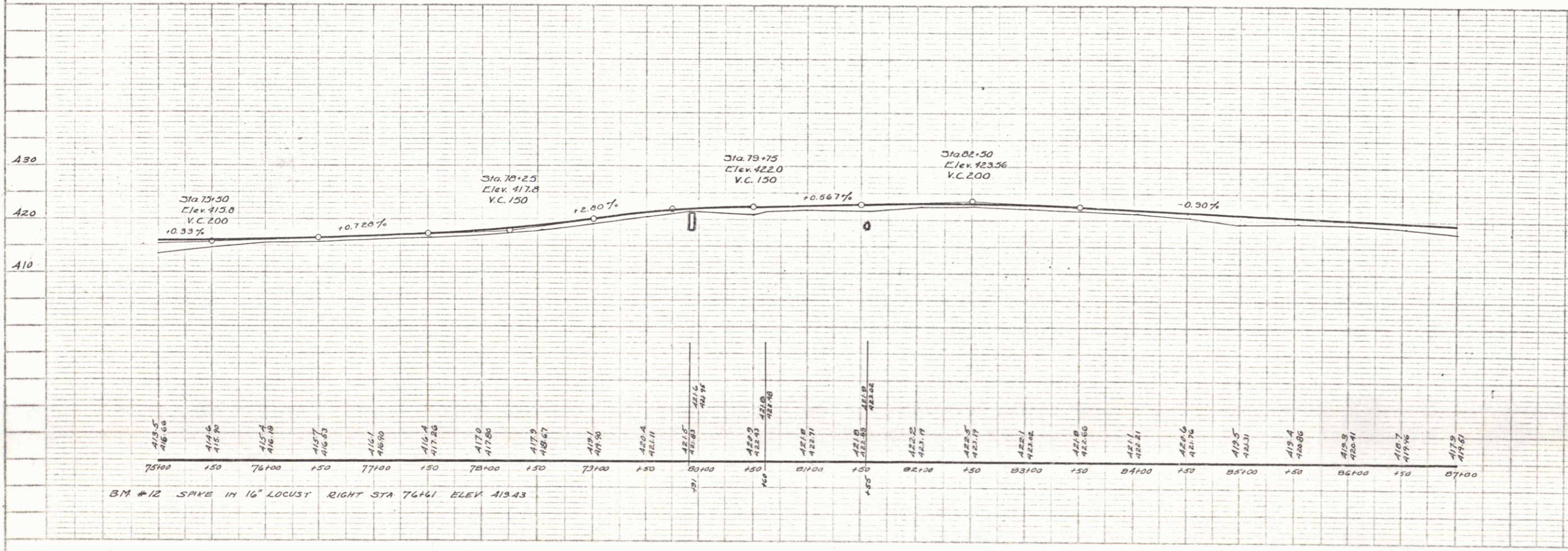
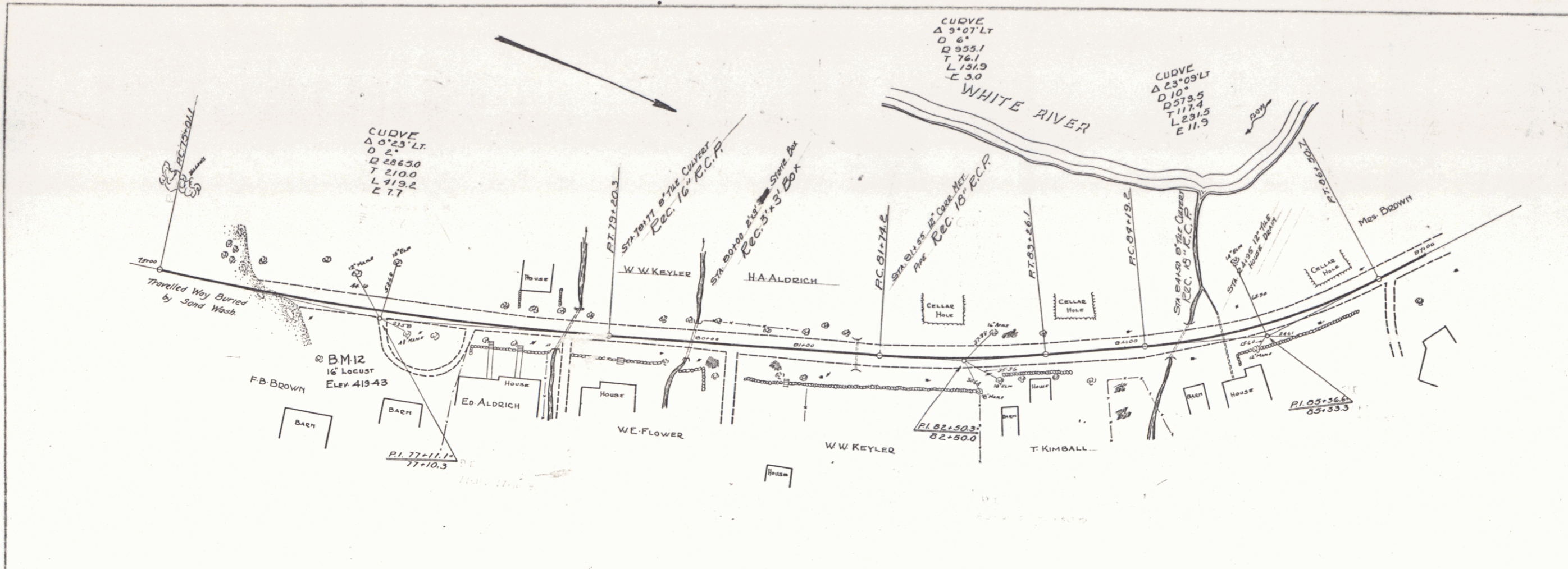
PROFILE	DATE	BY	CHKD.
DATE BOOK	REVISIONS	CHANGED	BY
NO.	BY	DATE	



600  
2400  
13  
2  
415.4

SERIES FB 6C  
SHEET 5 of

PLATE 1-PLAN-PROFILE U.S. & A.S. STANDARD  
SCALE 1" = 40' HORIZ. 1" = 10' VERT.



PLAN  
 DATE: 10/20/50  
 DRAWN BY: S.M.C.  
 CHECKED BY: S.M.C.

PROFILE  
 DATE: 10/20/50  
 DRAWN BY: S.M.C.  
 CHECKED BY: S.M.C.

SERIES FRGC  
 SHEET 6 of



FED. ROAD DIST. NO.	STATE	FED. PROJ. NO.	FISCAL YEAR	SHEET NO.	TOTAL SHEETS
9	VT.	FR 6 C		8	

PLAN  
 DATE 8/22/68  
 DRAWN BY S.W.C.  
 CHECKED BY S.W.C.

PROFILE  
 DATE 8/22/68  
 DRAWN BY S.W.C.  
 CHECKED BY S.W.C.

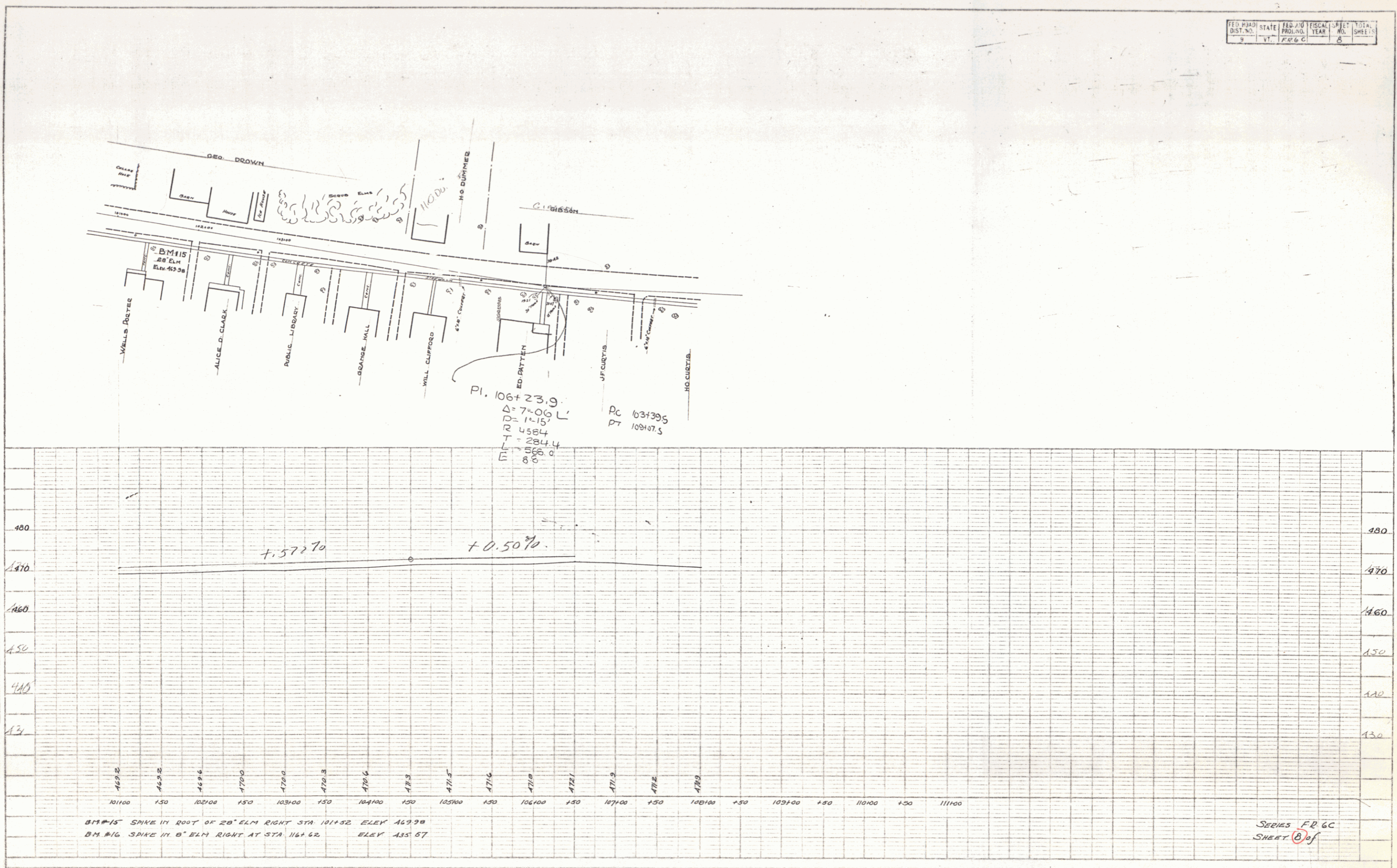


PLATE 1-PLAN-PROFILE - F. & E. STANBRO  
 REGISTERED & PATENTED BY THE ENGINEER

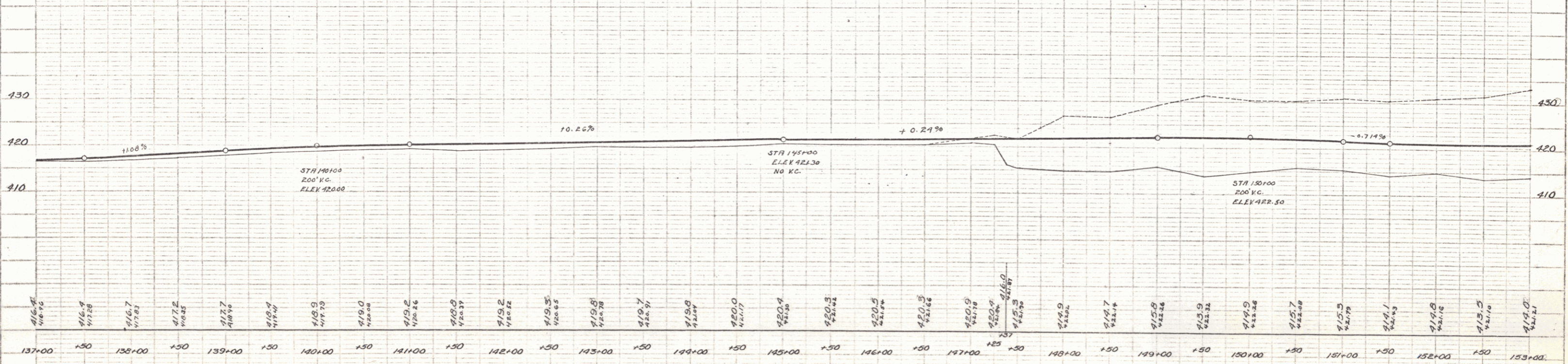
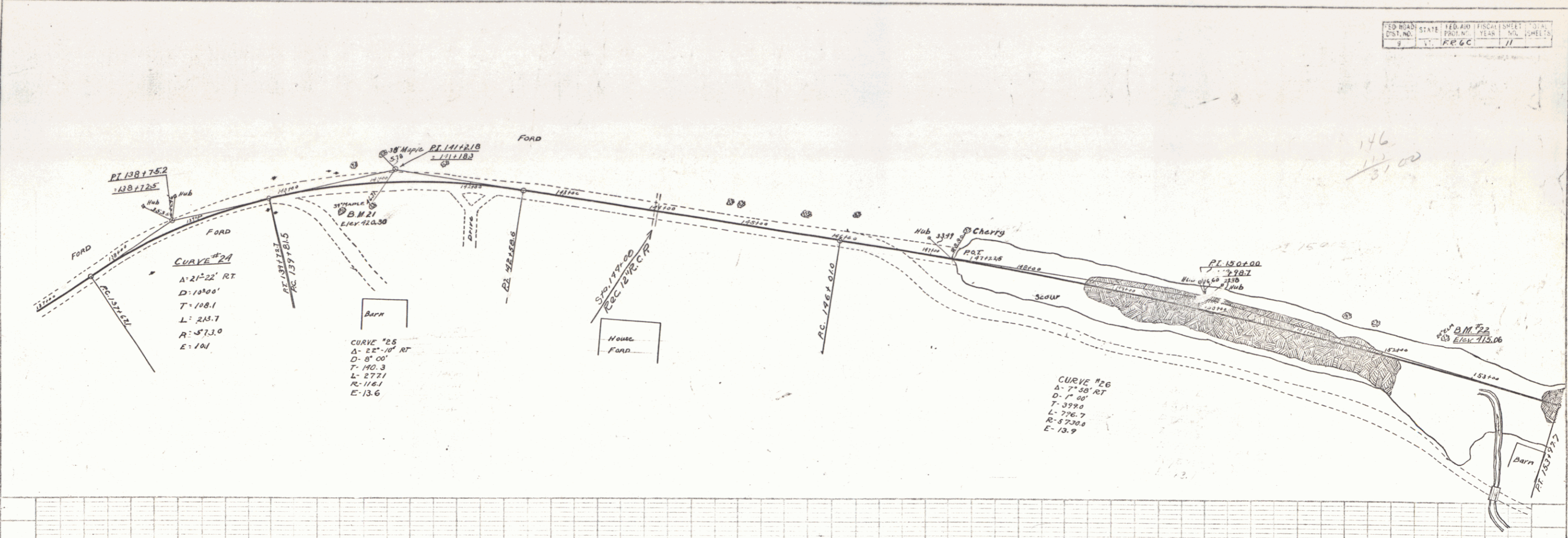
6





PLAN  
 PUTNAM  
 A.C. DAVIS  
 8/28  
 8/28

PROFILE  
 PUTNAM  
 N. STEVENS  
 8/28  
 8/28

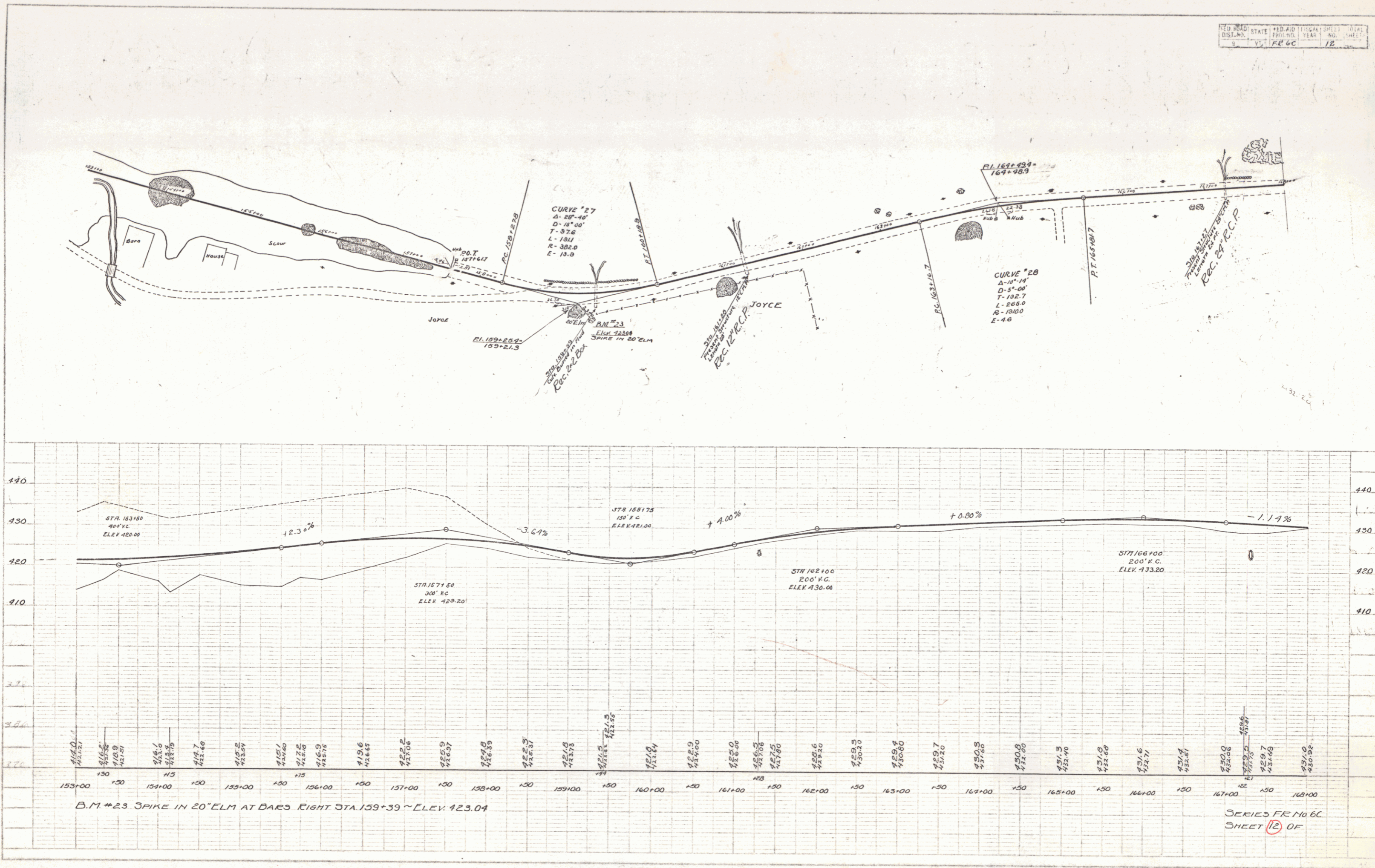


B.M. #21 SPIKE IN 34' MAPLE RT. ENTRANCE TO FORD HOUSE. RIGHT STA. 140+30 ~ ELEV. 420.30  
 B.M. #22 SPIKE IN 24' ELM OPR WIDE SCOUR LEFT STA. 152+62 ~ ELEV. 415.06

SERIES FR No 6C  
 SHEET 10 OF

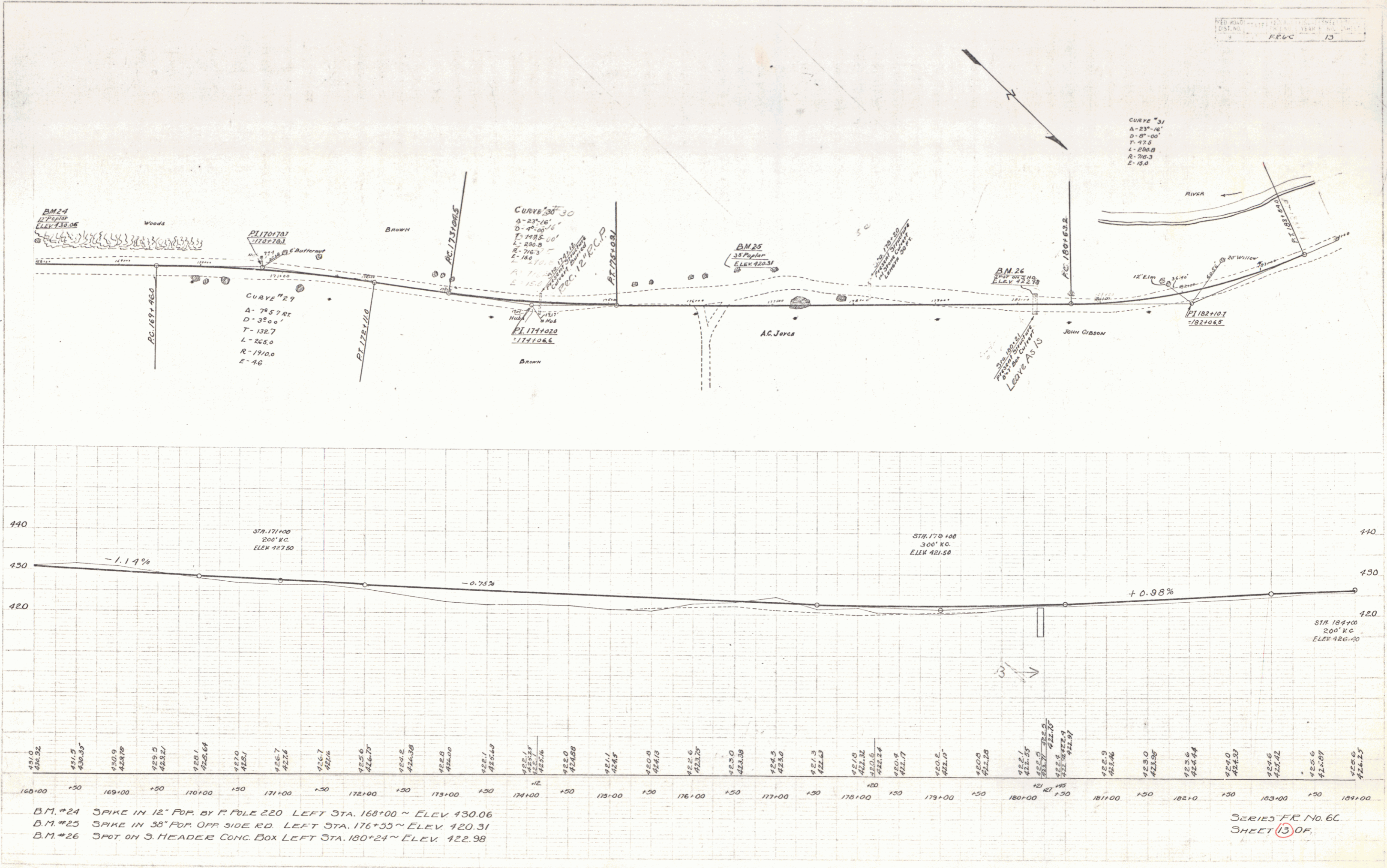
PLAN  
 DRAWN BY  
 A.C. DAVIS  
 8/28

PROFILE  
 DRAWN BY  
 N. STEVENS  
 8/28



PLAN  
 PROJECT: *BRUNN*  
 DRAWN BY: *A.C. JONES*  
 CHECKED BY: *H. STEVENS*  
 DATE: *1928*

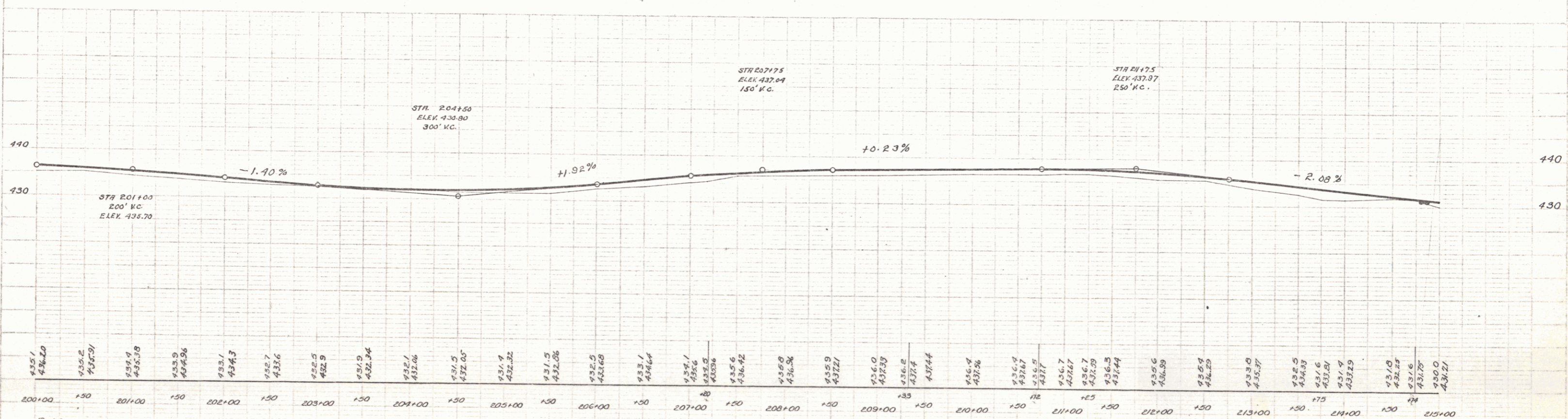
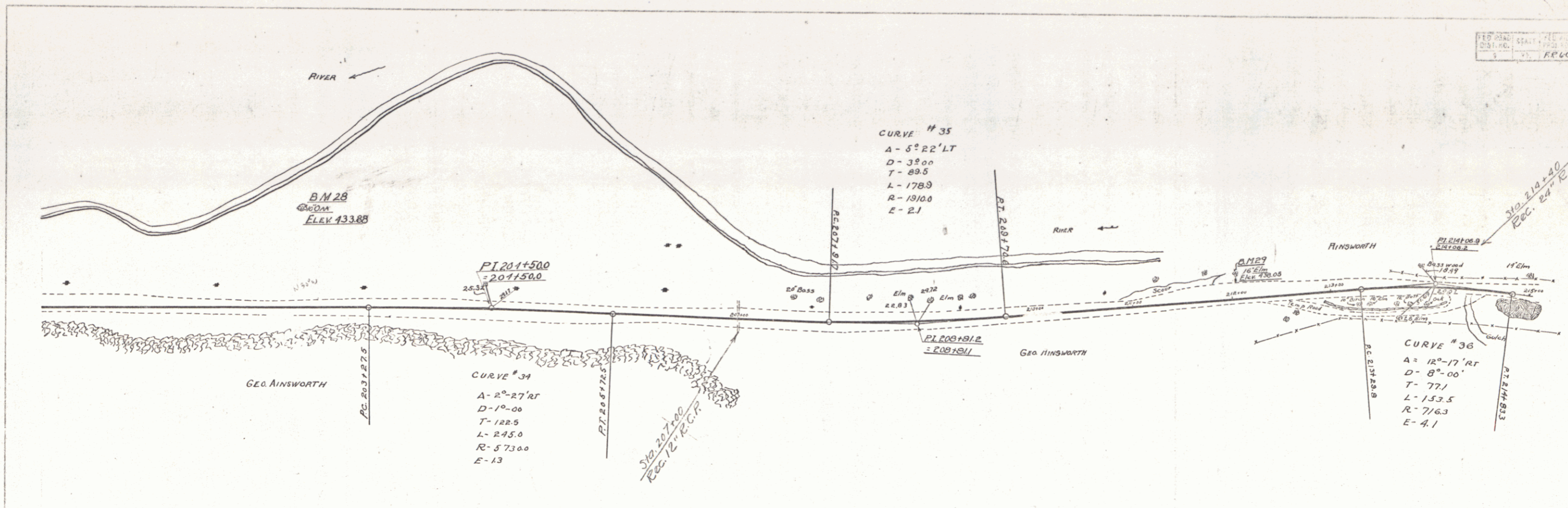
ELEVATION  
 BY: *A.C. JONES*  
 CHECKED BY: *H. STEVENS*  
 DATE: *1928*



B.M. #24 SPIKE IN 12" POP. BY R. POLE 220 LEFT STA. 168+00 ~ ELEV 430.06  
 B.M. #25 SPIKE IN 38" POP. OFF SIDE RD LEFT STA. 176+55 ~ ELEV 420.31  
 B.M. #26 SPOT ON S. HEADER CONC. BOX LEFT STA. 180+24 ~ ELEV 422.98

SERIES FC No. 6C SHEET 13 OF 11





B.M. # 28 SPIKE IN 10" OAK ACROSS OPEN FIELD LEFT STA. 202+60 ~ ELEV. 433.88  
 B.M. # 29 SPIKE IN 16" ELM AT DETOUR RT. LEFT STA. 212+06 ~ ELEV. 438.05

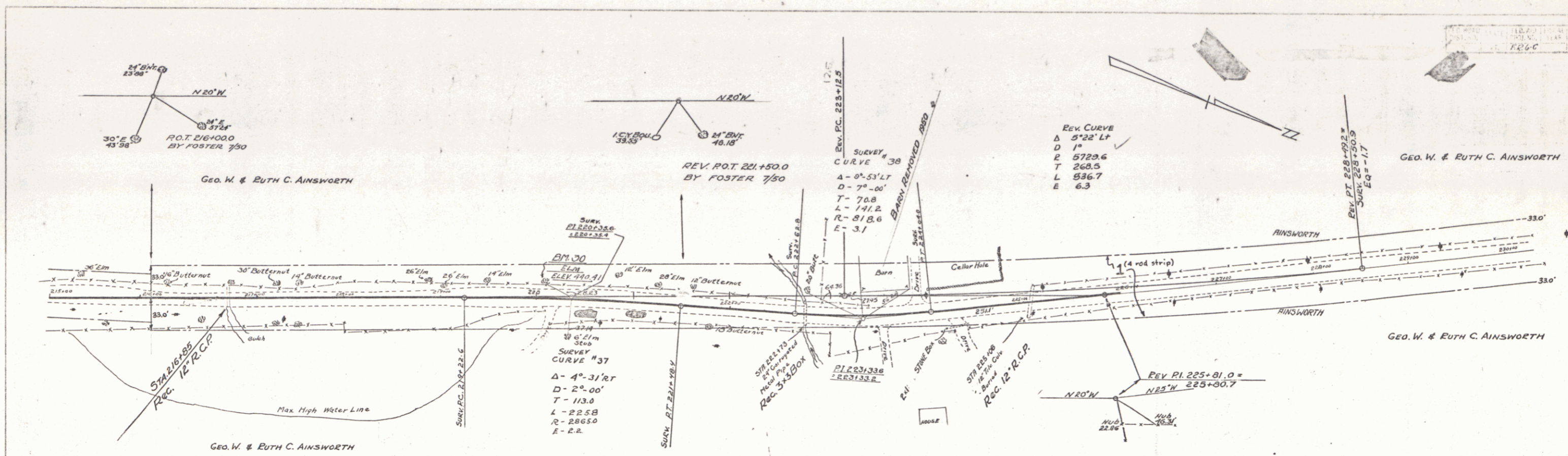
SERIES FR No 6C  
 SHEET 13 OF

PLAN  
 DATE  
 DRAWN BY  
 CHECKED BY  
 APPROVED BY

PROFILE  
 DATE  
 DRAWN BY  
 CHECKED BY  
 APPROVED BY

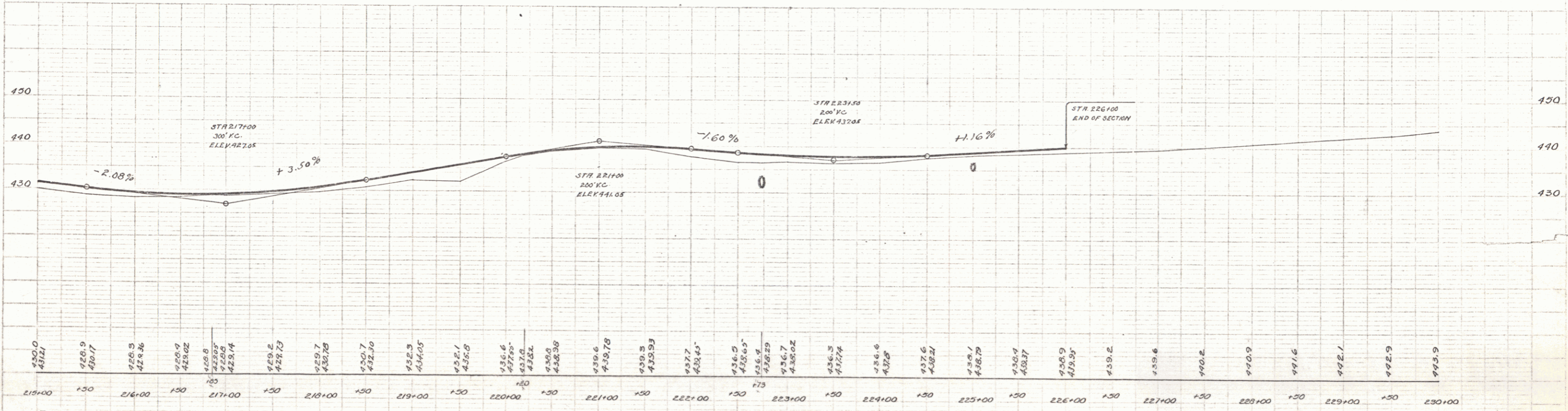
PLAN  
 SURVEYED  
 BY  
 DATE  
 SHEET NO.

PEOPLE  
 PUTNAM  
 STEVENS  
 DATE



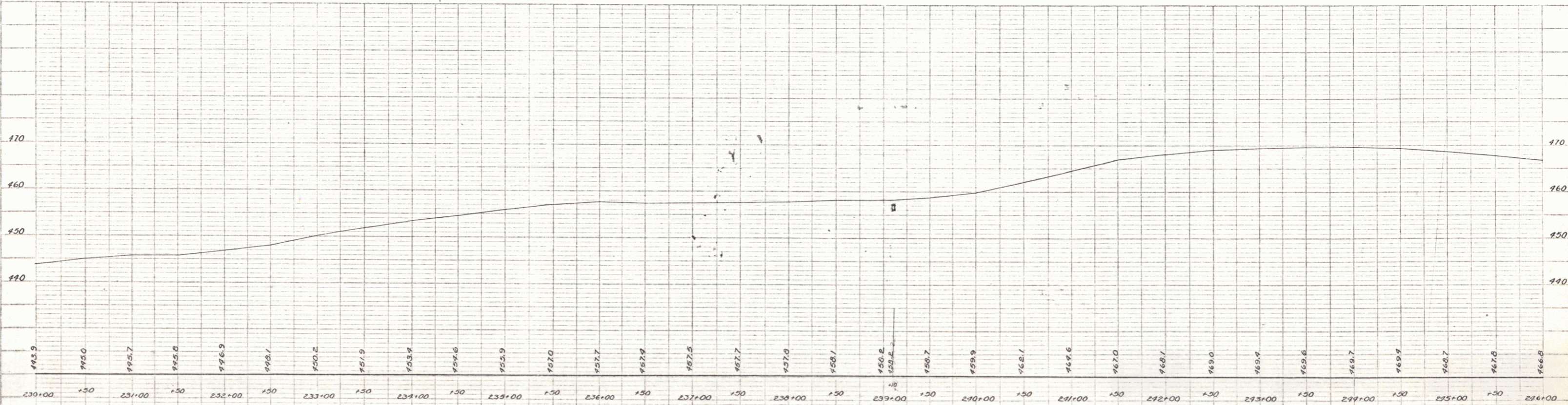
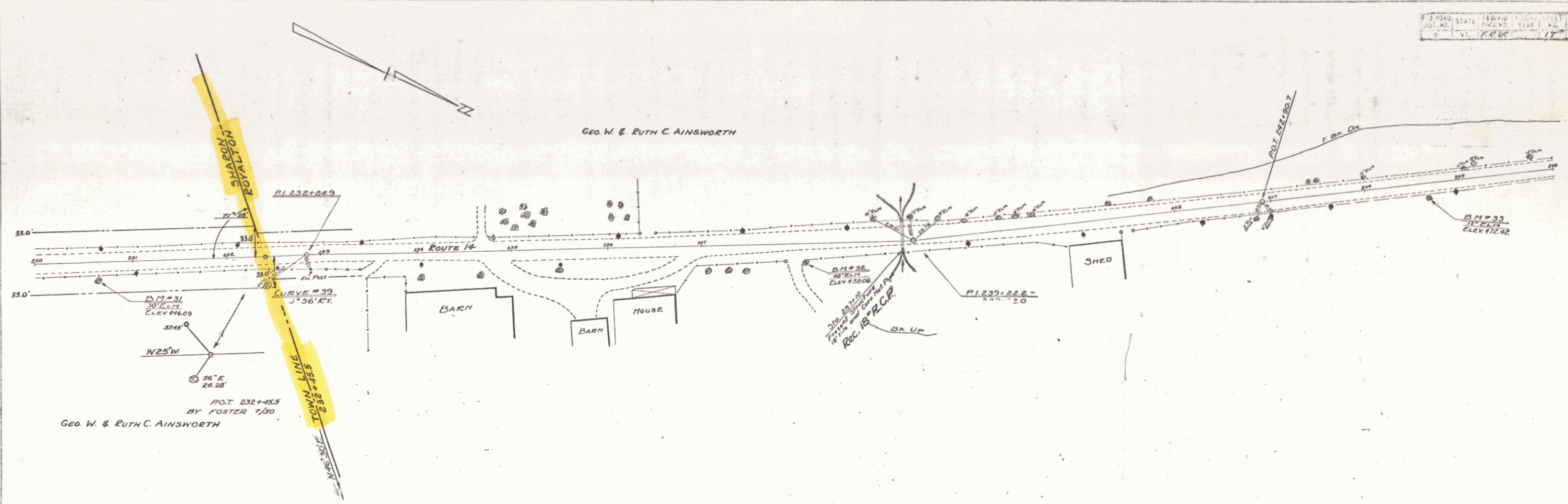
PARCEL	INSTRUMENT	DATE	GRANTOR	GRANTEE	RECORDED
1	WOOD	7/6/49	GEORGE W. & RUTH C. AINSWORTH	ST. OF VT.	BK

Survey 8/28  
 Revised 7/30  
 FOSTER



B.M. #30 SPIKE IN ROOT 30' ELM LEFT STA. 220+10 ~ ELEV. 440.91

SERIES FR No 60  
 SHEET 16 OF



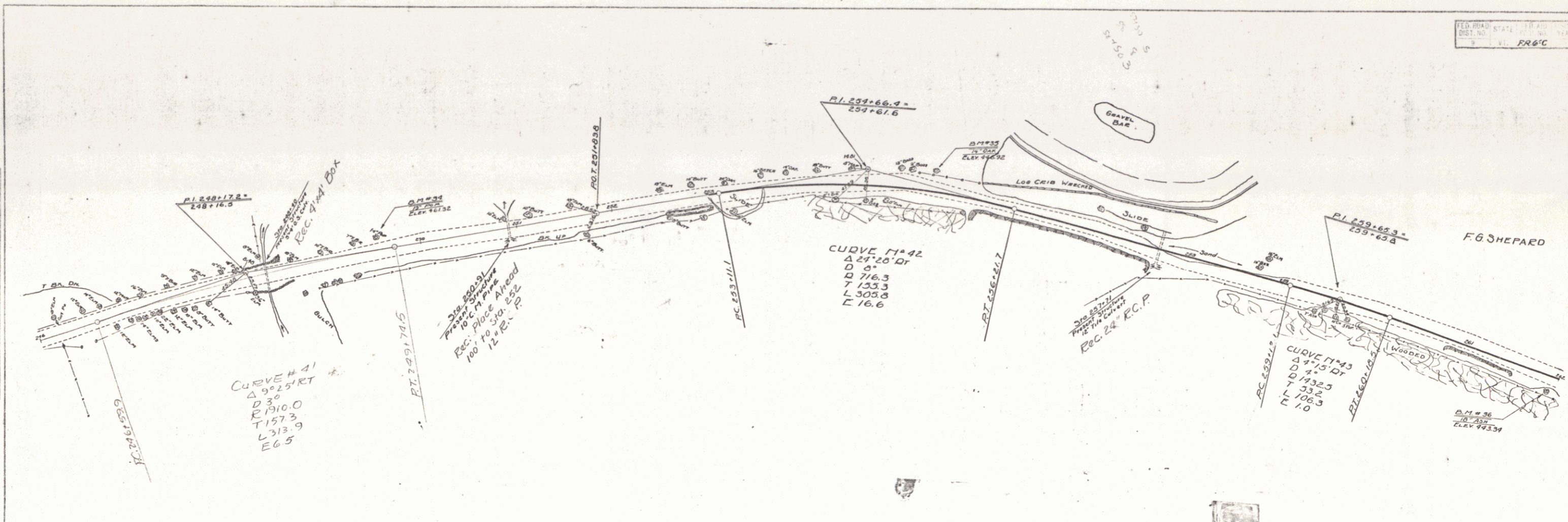
B.M. #31 SPIKE IN ROOT 30' ELM. RIGHT STA. 230+69 ~ ELEV. 446.09  
 B.M. #32 SPIKE IN ROOT 48' ELM. BEYOND YEL. HO. RIGHT STA. 238+07 ~ ELEV. 458.06  
 B.M. #33 SPIKE IN 12' ELM. RIGHT STA. 244+67 ~ ELEV. 472.42

SERIES FR No 6C  
 SHEET 17 OF

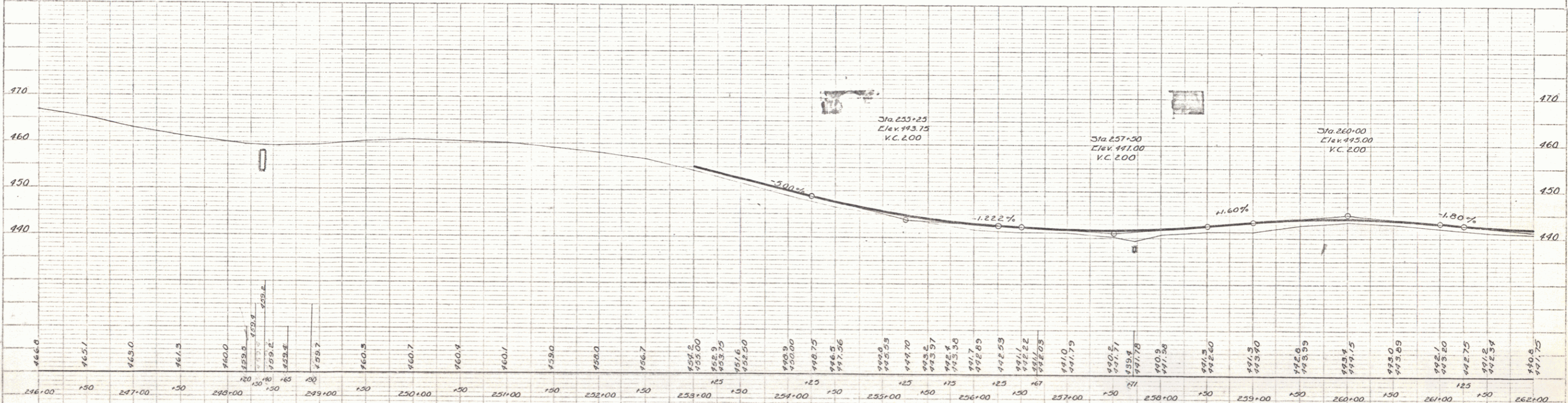
PLAN  
 SURVEYED BY  
 N.L. STEVENS  
 0/00

PROFILE  
 SURVEYED BY  
 N.L. STEVENS  
 0/00

PLAN  
 DATE 8/28  
 DRAWN BY N.L.S.  
 CHECKED BY N.L.S.  
 NO. 100



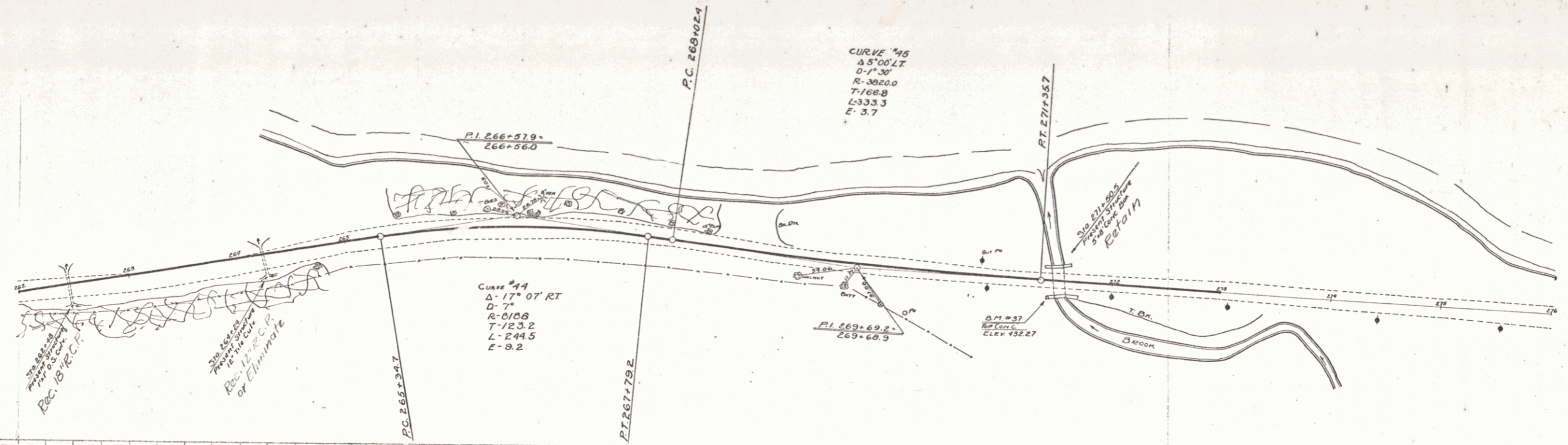
PROFILE  
 DATE 8/28  
 DRAWN BY N.L.S.  
 CHECKED BY N.L.S.  
 NO. 100



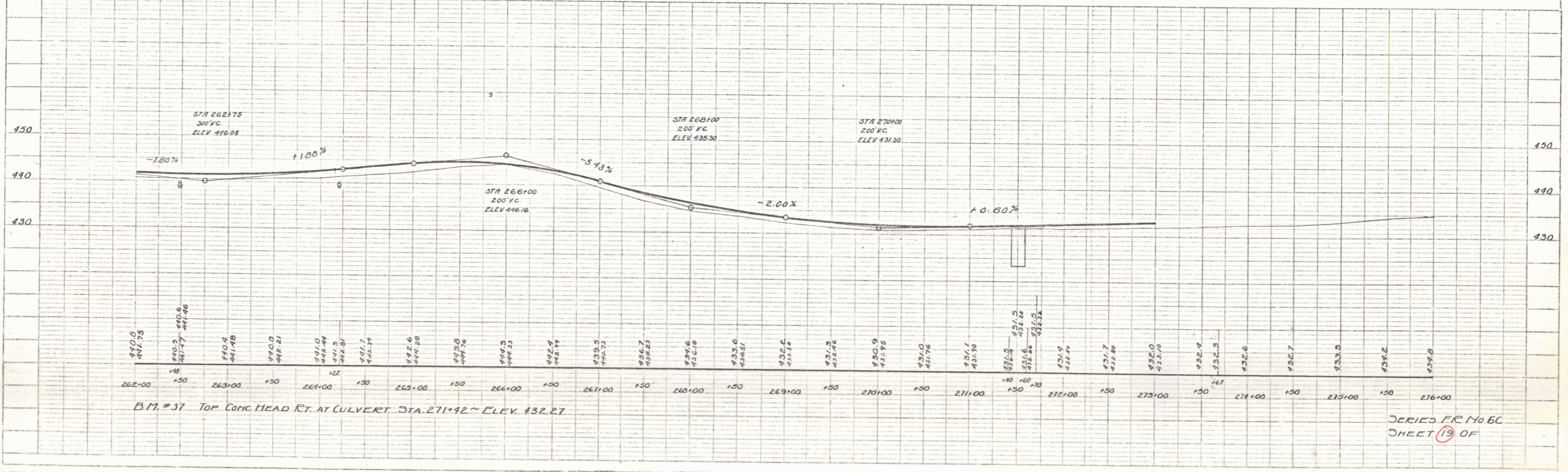
B.M. #34 SPIKE IN 15' POB LEFT STA 249+58 ~ ELEV 961.92  
 B.M. #35 SPIKE IN 18' OAK LEFT STA 253+31 ~ ELEV 946.92  
 B.M. #36 SPIKE IN 18' ASH RIGHT STA 261+92 ~ ELEV 943.34

SERIES FR No 6C  
 SHEET 18 OF

PLAN  
 DATE: 1/23/54  
 DRAWN BY: A.L. STANARD  
 CHECKED BY: J.C. STANARD



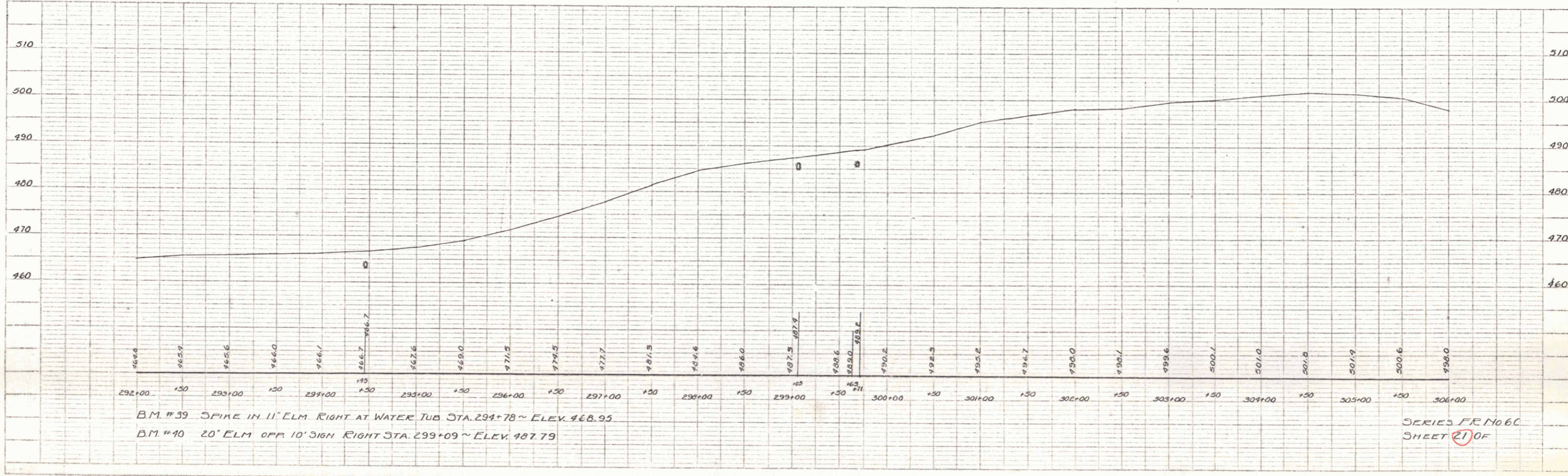
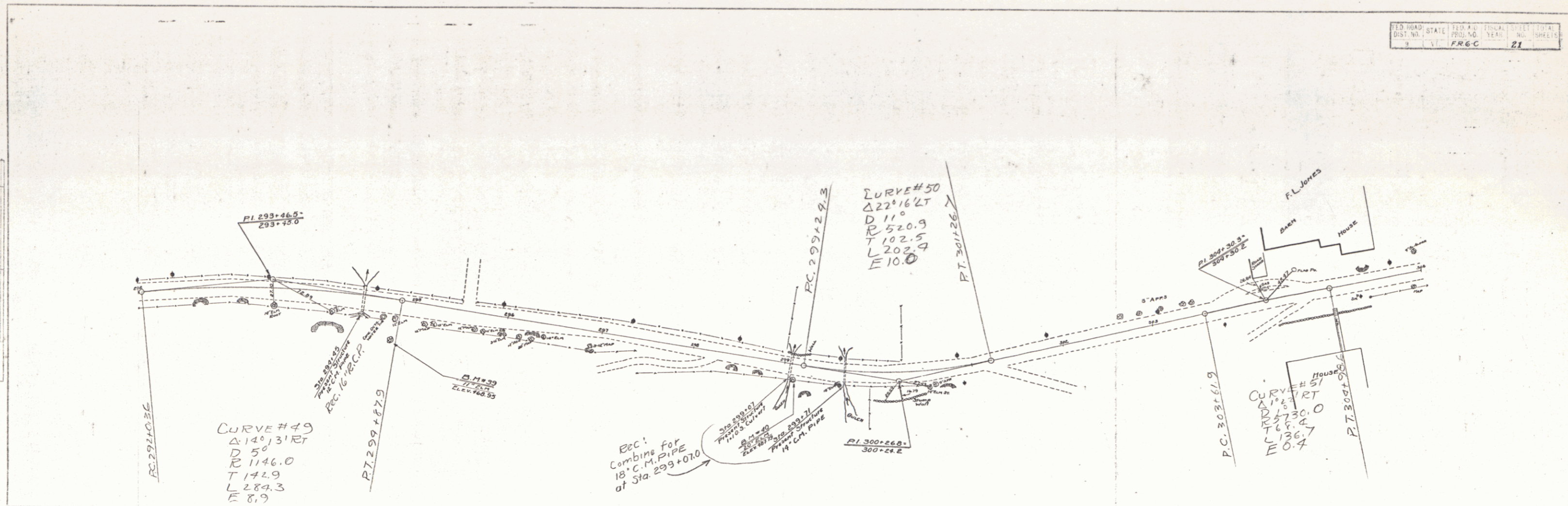
PROFILE  
 DATE: 1/23/54  
 DRAWN BY: A.L. STANARD  
 CHECKED BY: J.C. STANARD





PLAN  
 PROJECT NO. 11  
 SHEET NO. 21  
 DATE 8/28  
 DRAWN BY M.L.S.  
 CHECKED BY M.L.S.  
 IN CHARGE BY M.L.S.

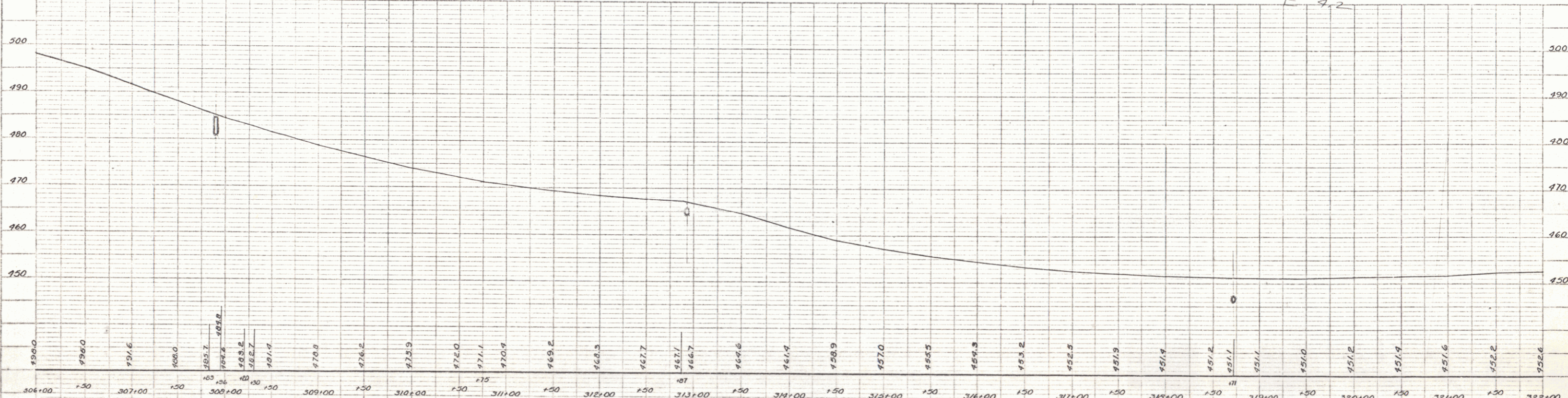
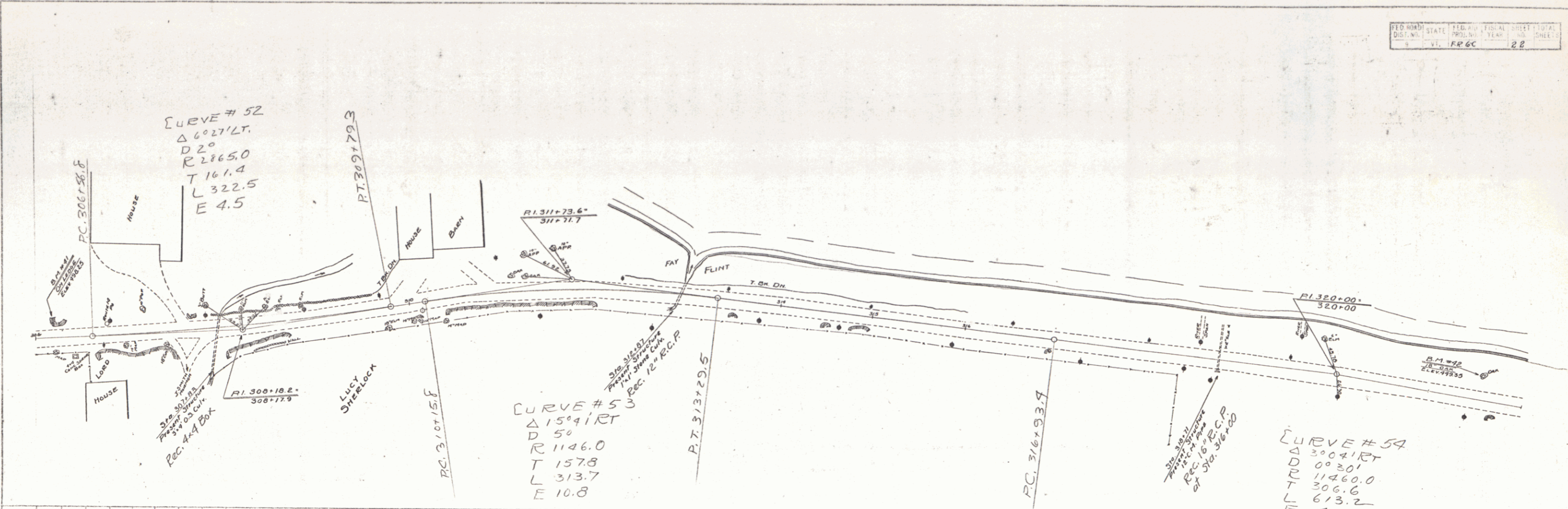
PROFILE  
 PROJECT NO. 11  
 SHEET NO. 21  
 DATE 8/28  
 DRAWN BY M.L.S.  
 CHECKED BY M.L.S.  
 IN CHARGE BY M.L.S.



SERIES FR No 60  
SHEET 21 OF

PLAN  
 SHEET NO. 28  
 DATE 1/21/28  
 PROJECT  
 DRAWN BY  
 CHECKED BY  
 IN CHARGE

PROFILE  
 SHEET NO. 28  
 DATE 1/21/28  
 PROJECT  
 DRAWN BY  
 CHECKED BY  
 IN CHARGE

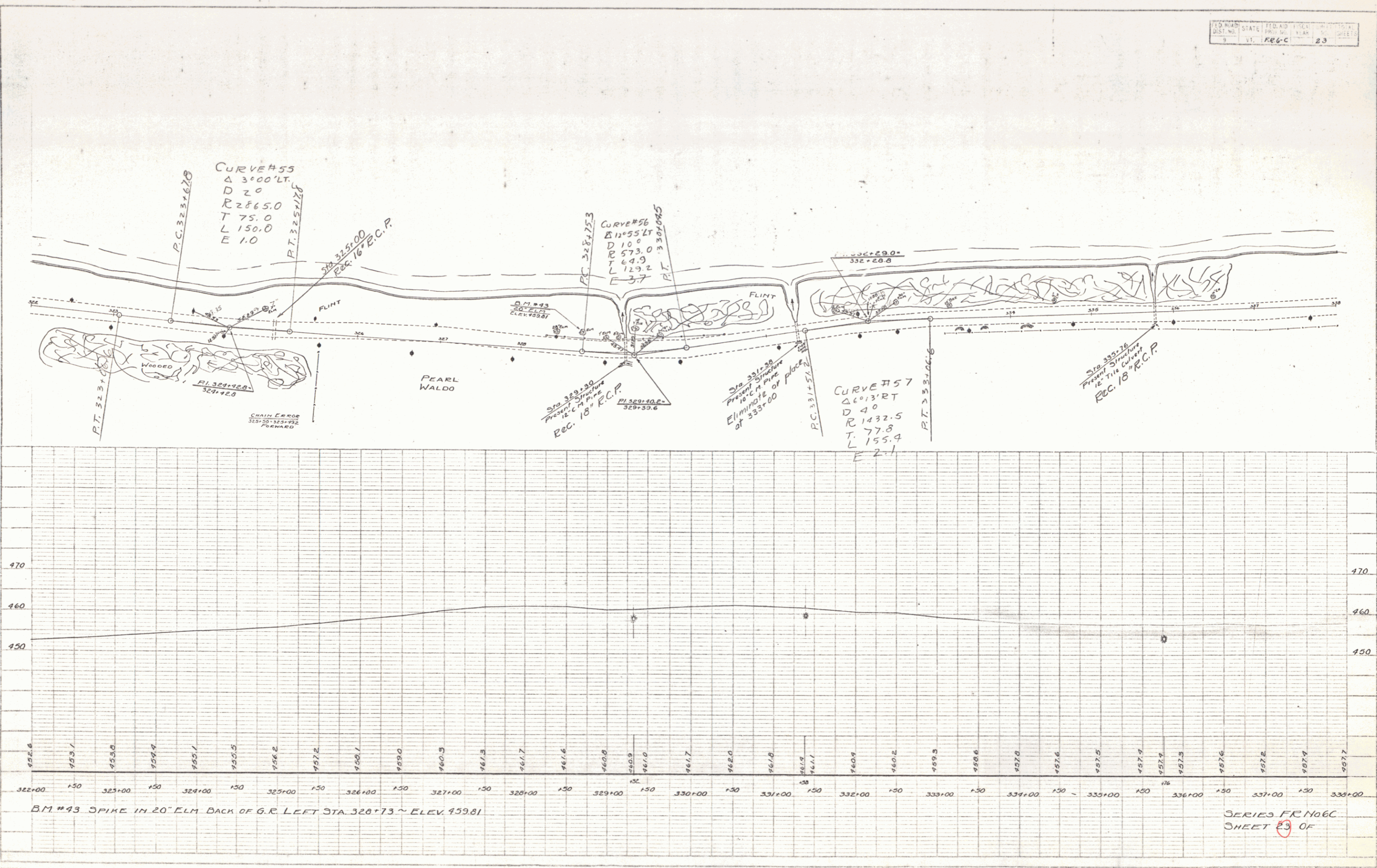


B.M. # 41 SPOT ON LEDGE ON KNOLL BEYOND THE MELROSE LEFT STA. 306+20 ~ ELEV. 498.25  
 B.M. # 42 SPIKE IN 18" OAK LEFT STA. 321+55 ~ ELEV. 449.35

SERIES FR No 60  
 SHEET 28 OF

PLAN  
 CURVED: PUTNAM  
 DATE: 0/28  
 SCALE: ALL STATIONS  
 0/28

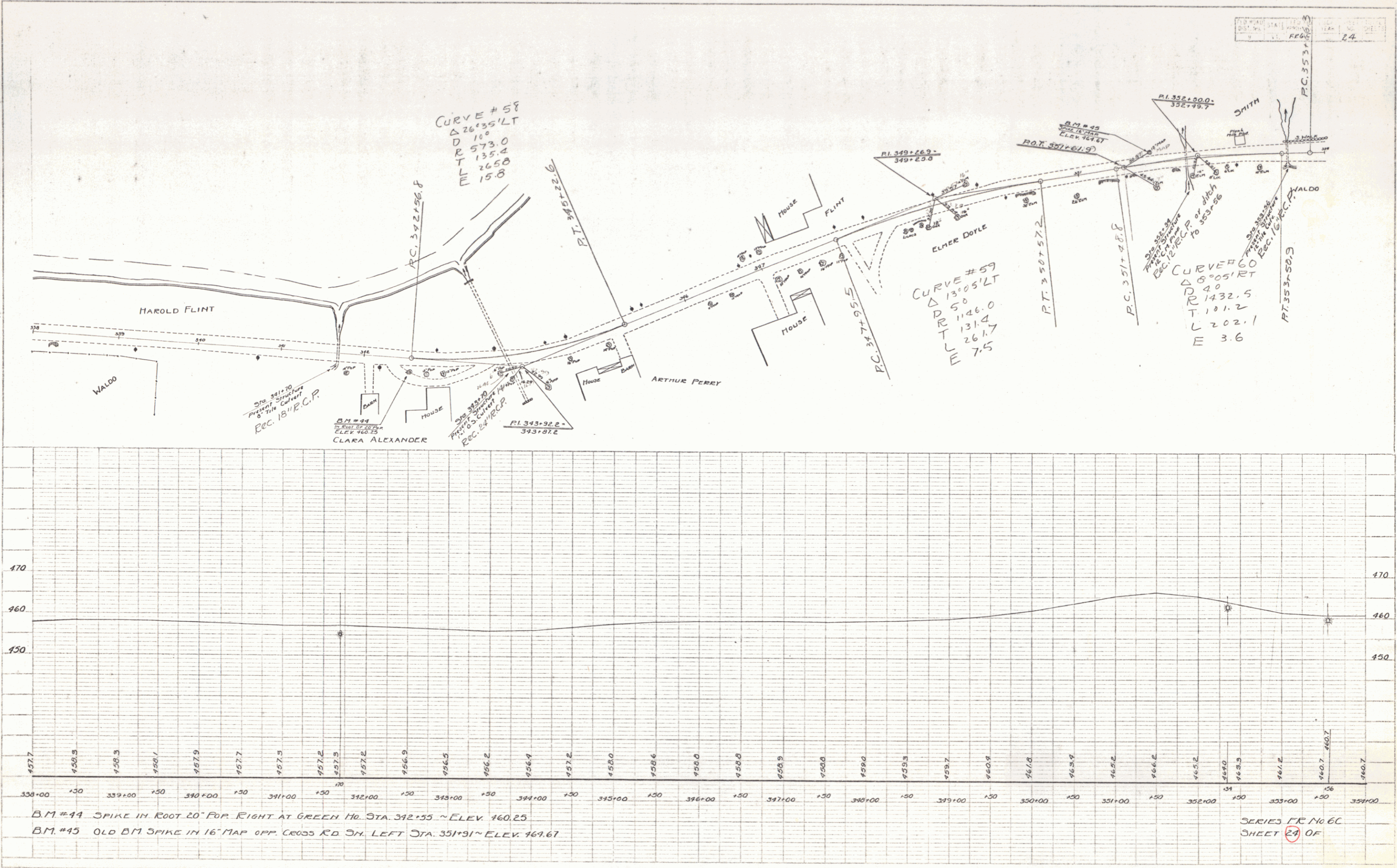
PROFILE  
 CURVED: PUTNAM  
 DATE: 0/28  
 SCALE: ALL STATIONS  
 0/28



SERIES FR N06C  
 SHEET 23 OF

PLAN  
 DATE: 6/68  
 DRAWN BY: F. J. MAM  
 CHECKED BY: A. L. STEVENS  
 TITLE: 16" MAP OFF. CROSS RD. 3M. LEFT STA. 351+91 ~ ELEV. 169.67

PROFILE  
 DATE: 6/68  
 DRAWN BY: F. J. MAM  
 CHECKED BY: A. L. S.  
 TITLE: 16" MAP OFF. CROSS RD. 3M. LEFT STA. 351+91 ~ ELEV. 169.67



B.M. #44 SPIKE IN ROOT 20" FOR RIGHT AT GREEN HO. STA. 342+55 ~ ELEV. 460.25  
 B.M. #45 OLD B.M. SPIKE IN 16" MAP OFF. CROSS RD. 3M. LEFT STA. 351+91 ~ ELEV. 169.67

SERIES LR No 6C  
 SHEET 24 OF

PLAN  
 P. R. G. C.  
 N. L. S.  
 8/28  
 8/28  
 8/28

PROFILE  
 P. R. G. C.  
 N. L. S.  
 8/28  
 8/28  
 8/28

