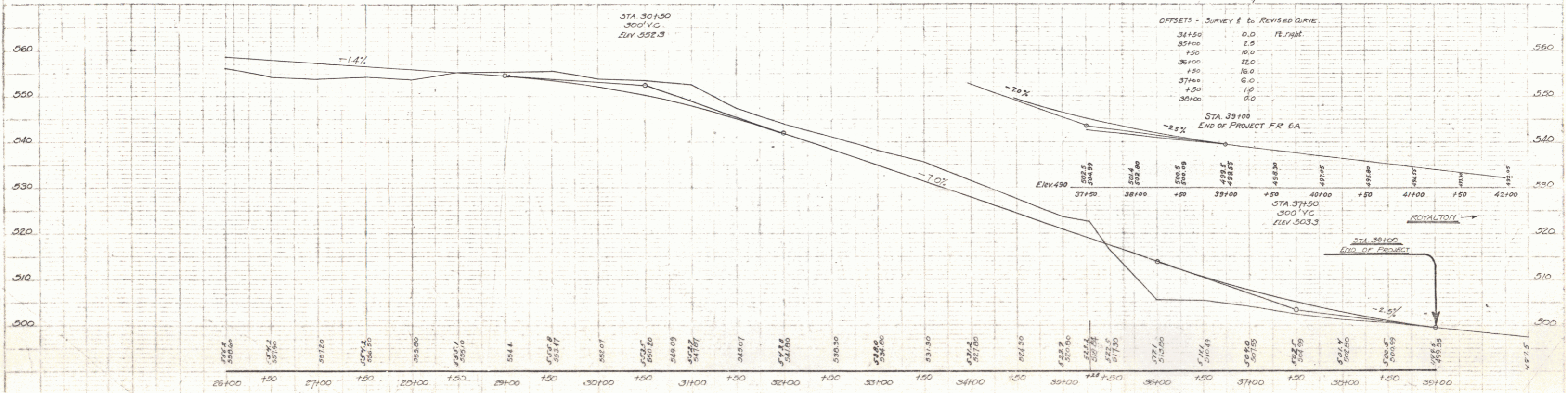
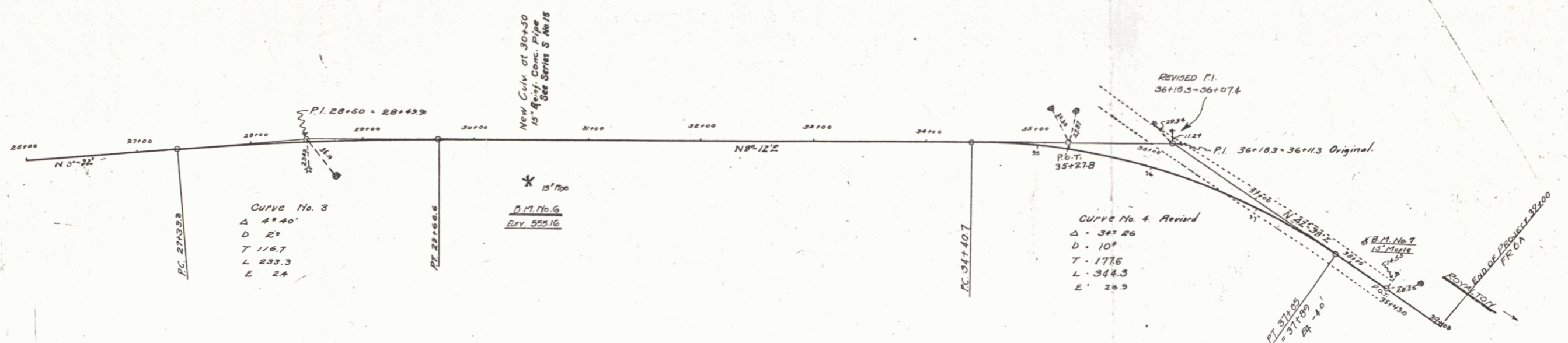


CABLE
GUARD RAIL REQUIRED
ON LEFT
 STA 35+66 to STA 37+26 - long 160 ft.

WOOD GUARD RAIL REQUIRED
ON LEFT
 STA 30+30 to STA 30+62 - 24'
 STA 30+30 to STA 30+62 - 24'
 STA 30+30 to STA 30+62 - 40'

NEW CULVERTS REQUIRED
 STA 30+50 - 15" REIN. CONC. PIPE
 CONC. CLASS B (1-1-1) - 2.1 cu yds
 REIN. STEEL - 33 lbs
 THIS CULVERT LAID BY STATE FORCES

FR 6A 1928 21 75



BM No. 6 - spike in 15" pipe at Sta 30+50 (2) ELEV 552.16
 BM No. 7 - 15" spike at Sta 38+00 ELEV 500.00

SHEET 2 OF 79
 Series FR No. 6A