

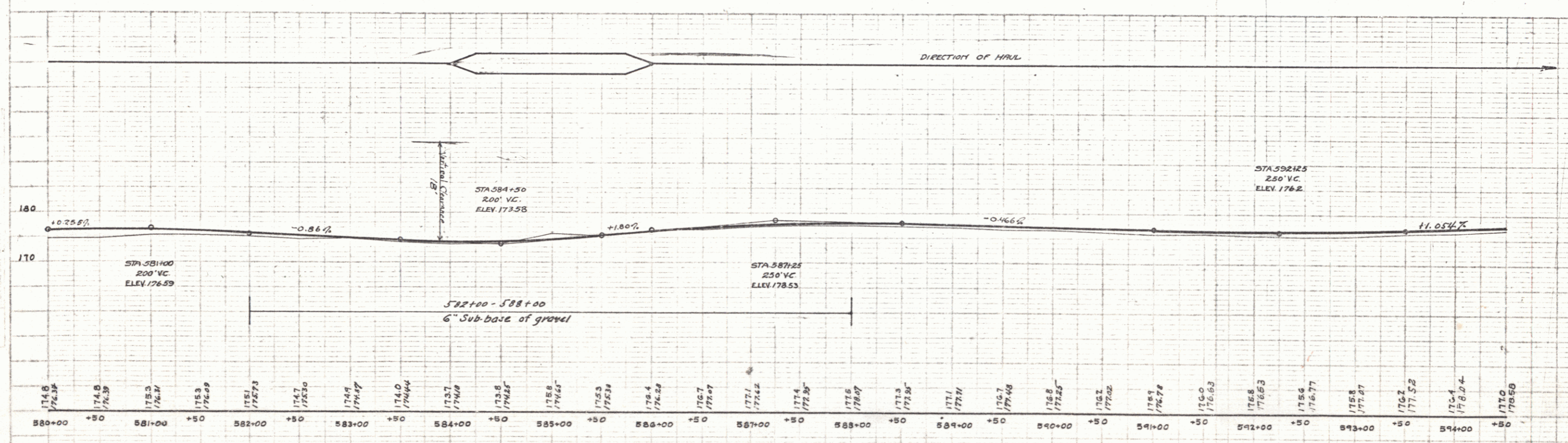
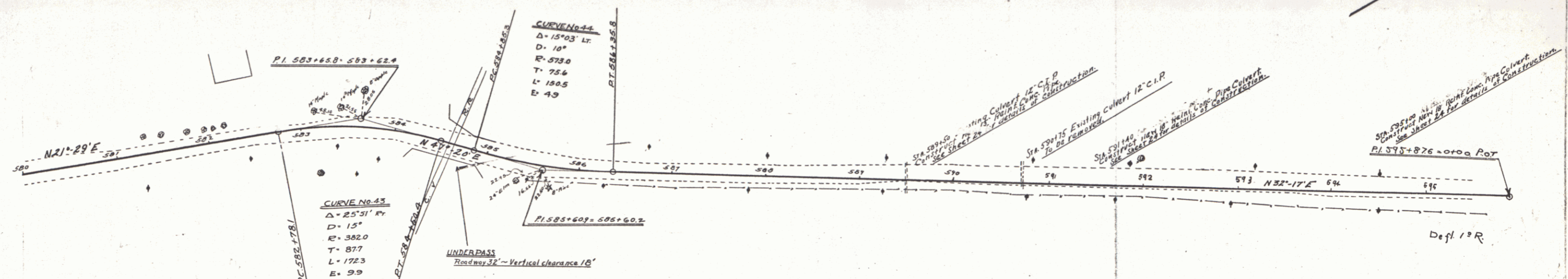
Note (At 584+)
 This section to be re-cross-sectioned
 during staking out and line to be revised
 to conform to new abutments of railroad
 underpass, which are now being built.

NEW CULVERTS REQUIRED

Sta. 589+50	18" Rein. Conc. Pipe Length 33'
Conc. Class B (1-2-5) 2.6 cu yds.	
Rein. Steel 33 lbs.	
Sta. 591+00	18" Rein. Conc. Pipe Length 33'
Conc. Class B (1-2-4) 1.9 cu yds.	
Rein. Steel 34 lbs.	
Sta. 595+00	18" Rein. Conc. Pipe Length 33'
Conc. Class B (1-2-4) 1.9 cu yds.	
Rein. Steel 34 lbs.	

WOOD GUARD RAIL

589+30-589+62	Length 24'
RIGHT	
589+38-589+62	" 24'
591+28-591+52	" 24'
594+88-595+12	" 24'
LEFT	
591+28-591+52	" 24'
594+88-595+12	" 24'



17