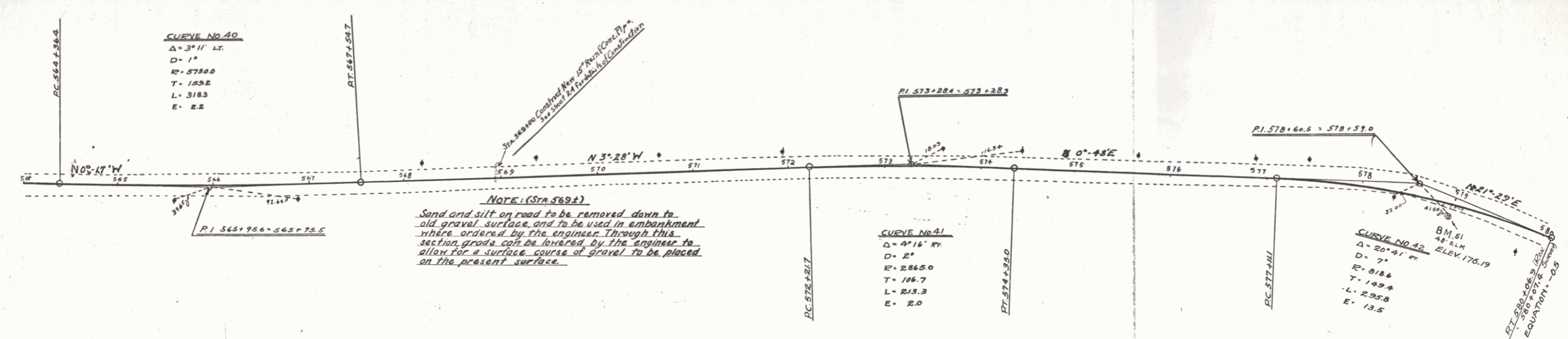
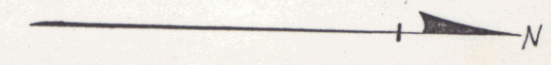


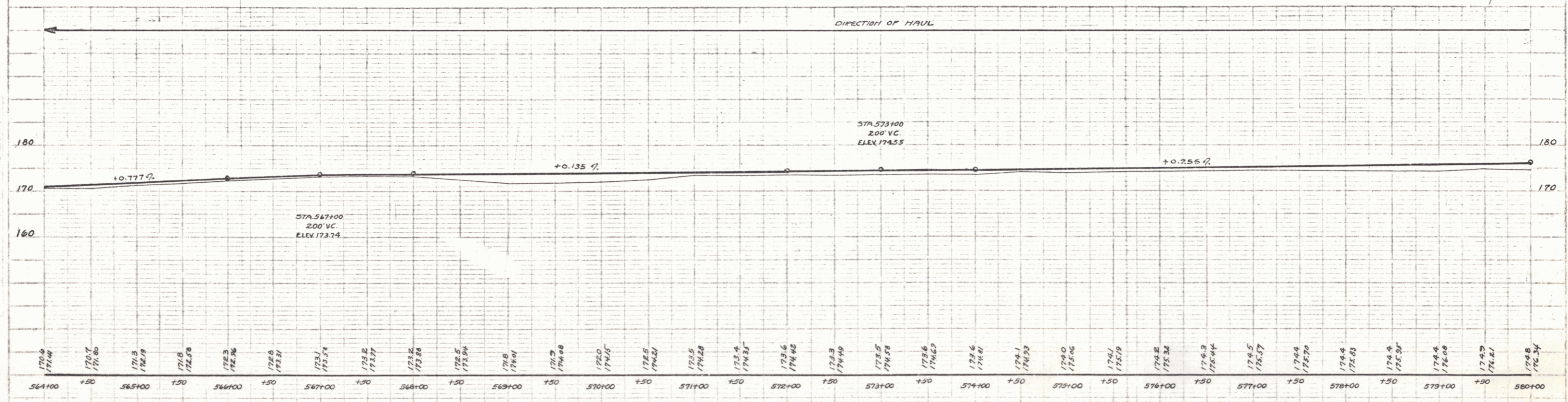
Wood Guard Rail Required
 On Right 560+00 to 569+12 Length 24'
 On Left 560+00 to 569+12 Length 24'

NEW CULVERTS REQUIRED
 STA 569+00 15' Reinf Conc. Pipe Length 32'
 Conc. Class B (1-2k-5) 2.6 cu yds
 Reinf. Steel 33 lbs

FILE NO.	STATE	LOCAL SHEET	DATE
9	VA	6A 1928	17 79



NOTE: (Sta. 569+)
 Sand and silt on road to be removed down to old gravel surface, and to be used in embankment where ordered by the engineer. Through this section, grade can be lowered by the engineer to allow for a surface course of gravel to be placed on the present surface.



BM 51 40' ELM RIGHT STA. 578+96 ELEV 176.19

SERIES PA No. 6A
 SHEET 17 OF 29

16