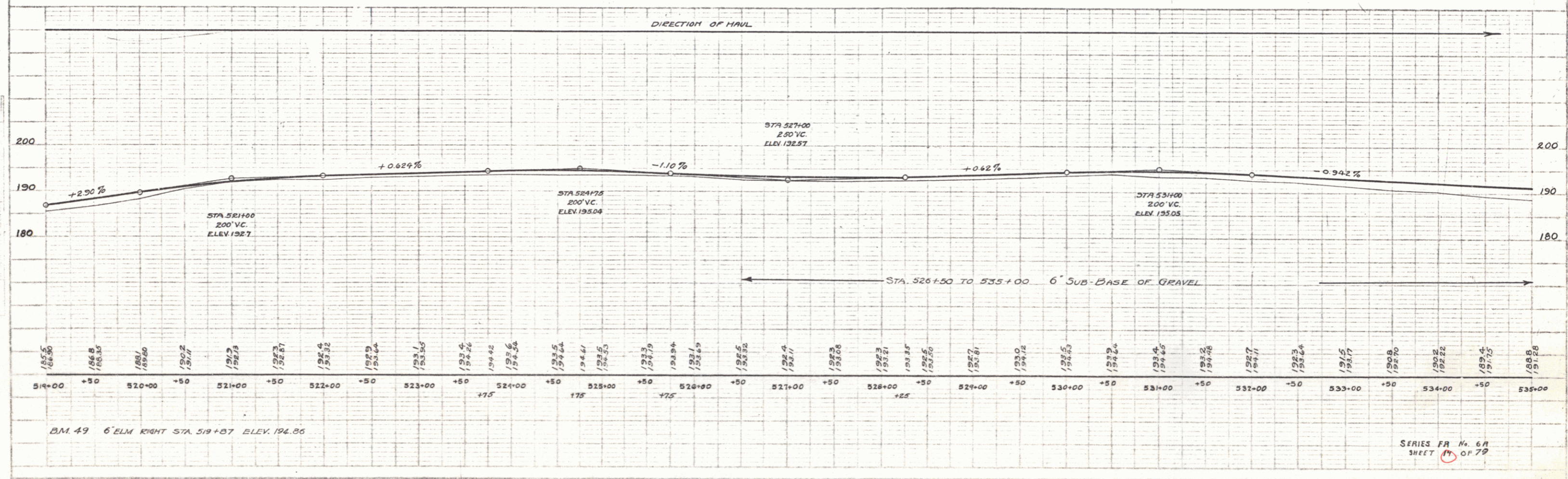
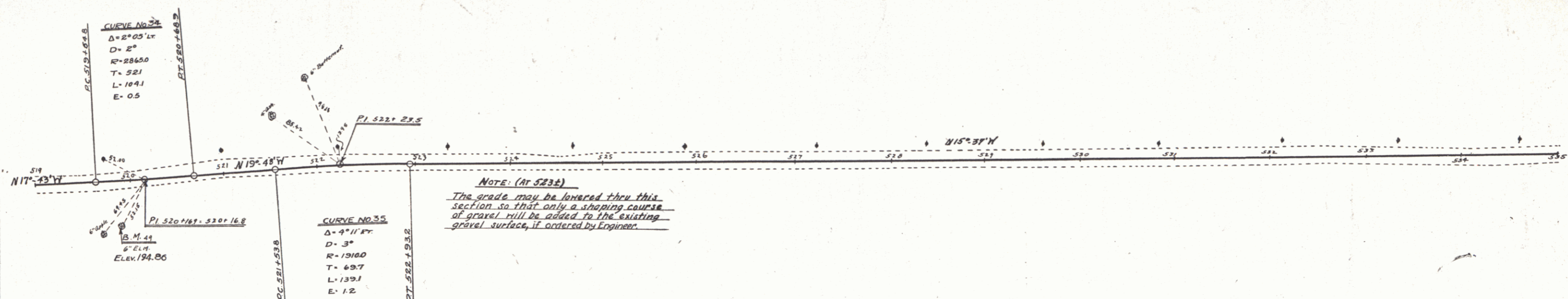


CABLE GUARD RAIL
LEFT
 519100-519144 Length 44'

FIELD ROAD DIST. NO.	STATE	FED. ROAD DIST. NO.	LOCAL ROAD NO.	SHEET NO.	TOTAL SHEETS
9	PA	6R	1928	14	79



B.M. 49 6" ELM RIGHT STA. 519+57 ELEV. 194.86

SERIES FR No. 6R
 SHEET 14 OF 79