

PLAN
 A. D. WOOD
 E. PLATTINGBY
 CIVIL ENGINEERS
 100 N. W. 1st St.
 WASHINGTON, D. C.

PLAN
 A. D. WOOD
 E. PLATTINGBY
 CIVIL ENGINEERS
 100 N. W. 1st St.
 WASHINGTON, D. C.

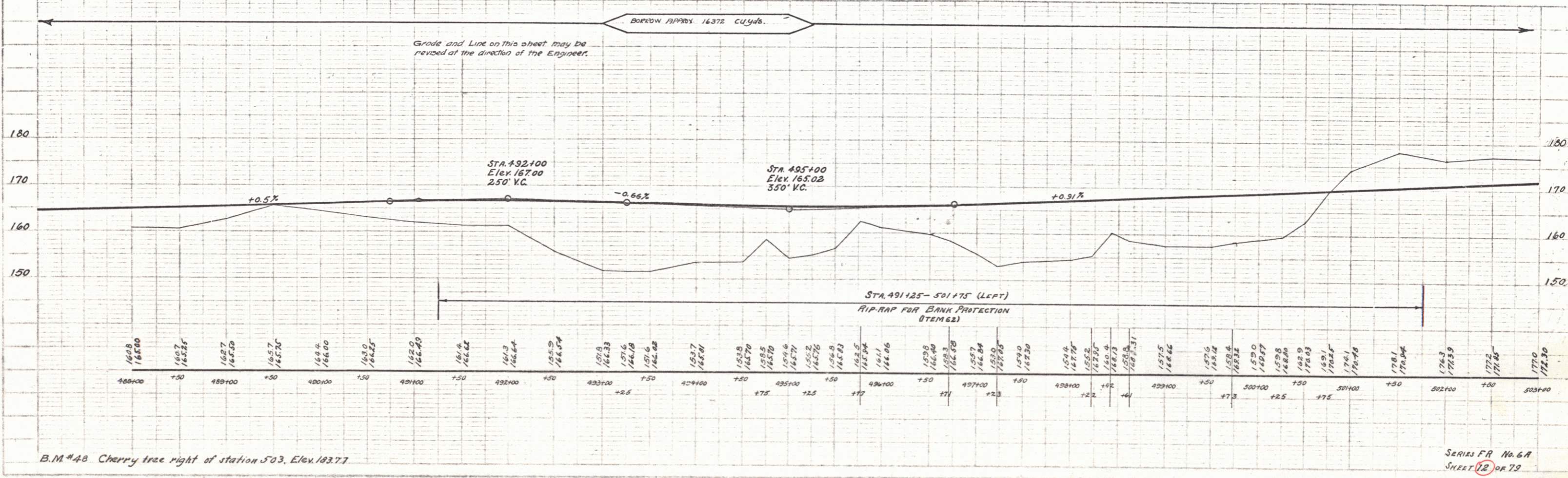
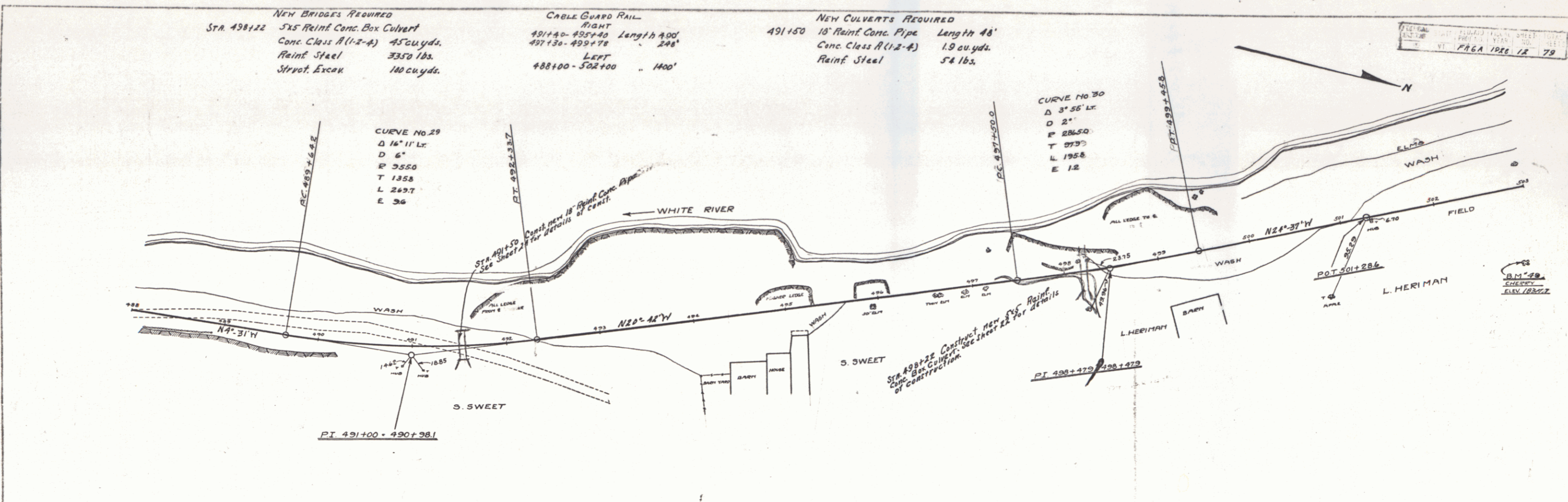
NEW BRIDGES REQUIRED
 STA. 498+22 5x5 Reinf. Conc. Box Culvert
 Conc. Class A (1-2-4) 45 cu. yds.
 Reinf. Steel 3350 lbs.
 Strout. Excav. 140 cu. yds.

CABLE GUARD RAIL
 RIGHT
 491+40-495+40 Length 400'
 497+30-499+78 " 248'
 LEFT
 488+00-502+00 " 400'

NEW CULVERTS REQUIRED
 491+50 18" Reinf. Conc. Pipe Length 48'
 Conc. Class A (1-2-4) 1.9 cu. yds.
 Reinf. Steel 54 lbs.

CURVE NO. 29
 Δ 16° 11' Lt.
 D 6"
 P 355.0
 T 135.8
 L 249.7
 E 36

CURVE NO. 30
 Δ 3° 55' Lt.
 D 2"
 P 286.50
 T 97.3
 L 195.6
 E 12



FILE NO. 100-100000-1000
 SHEET NO. 12 OF 12
 DATE 1966.12.29

SERIES FR No. 6A
 SHEET 12 OF 12

112