

INDEX OF SHEETS

SHEET NO.	TITLE PAGE
1	TITLE PAGE
2	TYPICAL CROSS-SECTION OF IMPROVEMENT
3	PLAN AND PROFILE STA. 357 - 575
4	375 - 389
5	389 - 405
6	405 - 421
7	421 - 426/35
8	426/35 - 440
9	440 - 456
10	456 - 472
11	472 - 488
12	488 - 503
13	503 - 519
14	519 - 535
15	535 - 550
16	550 - 566
17	566 - 580
18	580 - 594/50
19	-1100 - 13106
20	13106 - 26
21	26 - 39
22-25	BRIDGE SHEETS
24-26	STANDARD STRUCTURE SHEETS
27-79	CROSS-SECTION SHEETS

FED. ROAD DIST. NO.	STATE	PROJECT NO.	SHEET NO.	TOTAL SHEETS
9	VT.	FR6A 1928	1	79

STATE OF VERMONT
STATE HIGHWAY DEPARTMENT

PLAN AND PROFILE OF PROPOSED
STATE HIGHWAY

FEDERAL AID PROJECT

TOWNS OF HARTFORD AND SHARON Pin# 00R733

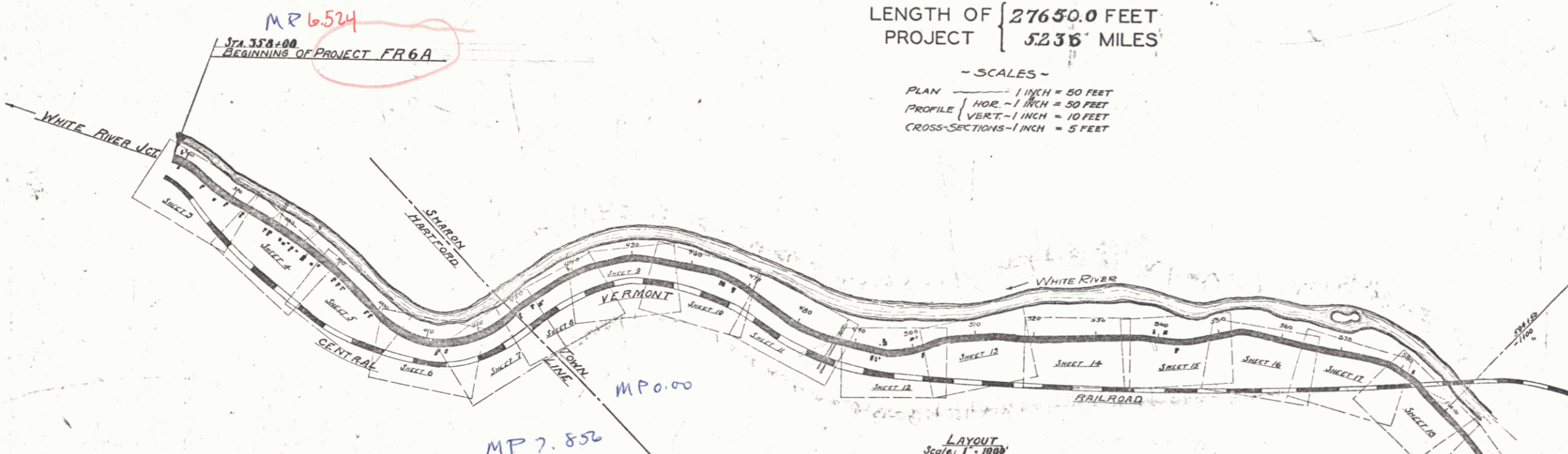
WHITE RIVER JUNCTION - BETHEL ROAD

FROM 7033' SOUTH OF THE HARTFORD-SHARON TOWN LINE NORTH 5.236 MILES

LENGTH OF 27650.0 FEET
PROJECT 5.236 MILES



SCALE: 1" = 4 MILES



SCALES -
PLAN 1 INCH = 50 FEET
PROFILE HOR. - 1 INCH = 50 FEET
VERT. - 1 INCH = 10 FEET
CROSS-SECTIONS - 1 INCH = 5 FEET

RIGHT-OF-WAY DIVISION
TOWN FILE

PERPETUAL
Town of VT 14
(To Be Returned To R.O.W. Division)

CONVENTIONAL SIGNS	
COUNTY LINE
TOWN LINE
FENCE LINE
STONE WALL
UNFENCED PROPERTY
GUARD RAIL
TRAVELED WAY
RAILROAD
RETAINING WALL
CENTER LINE
SURVEY LINE
CULVERT
DROP INLET
TROLLEY POLE
POWER POLE
TELEPHONE POLE
TREES
HEDGE

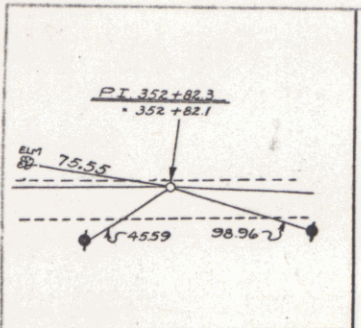
CURVE DATA	
DEFLECTION ANGLE Δ
DEGREE OF CURVE D
RADIUS OF CURVE R
TANGENT DISTANCE T
LENGTH OF CURVE L
EXTERNAL DISTANCE E
POINT OF INTERSECTION P. I.
POINT OF CURVE P. C.
POINT OF TANGENT P. T.
POINT ON TANGENT P. O. T.

APPROVED: JUNE 15 1928
MP 3.912
STA. 39.00
END OF PROJECT FR6A
Submitted by ORDER OF THE STATE HIGHWAY BOARD
JUNE 15 1928
S. B. Baber
COMMISSIONER OF HIGHWAYS

RECOMMENDED [Signature]
DISTRICT ENGINEER BUREAU OF PUBLIC ROADS
RECOMMENDED FOR APPROVAL [Signature]
CHIEF ENGINEER BUREAU OF PUBLIC ROADS
APPROVED [Signature]
DIRECTOR BUREAU OF PUBLIC ROADS

SERIES No. FR6A FILED
SHEET 1 OF 79

DIST. # 4 PLANS



NEW CULVERTS REQUIRED

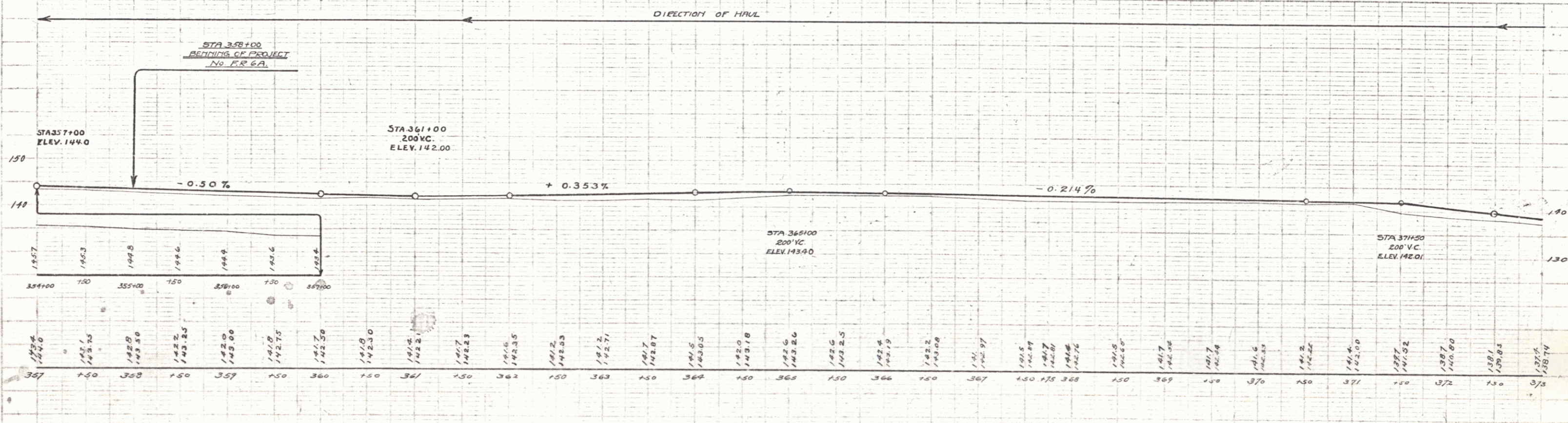
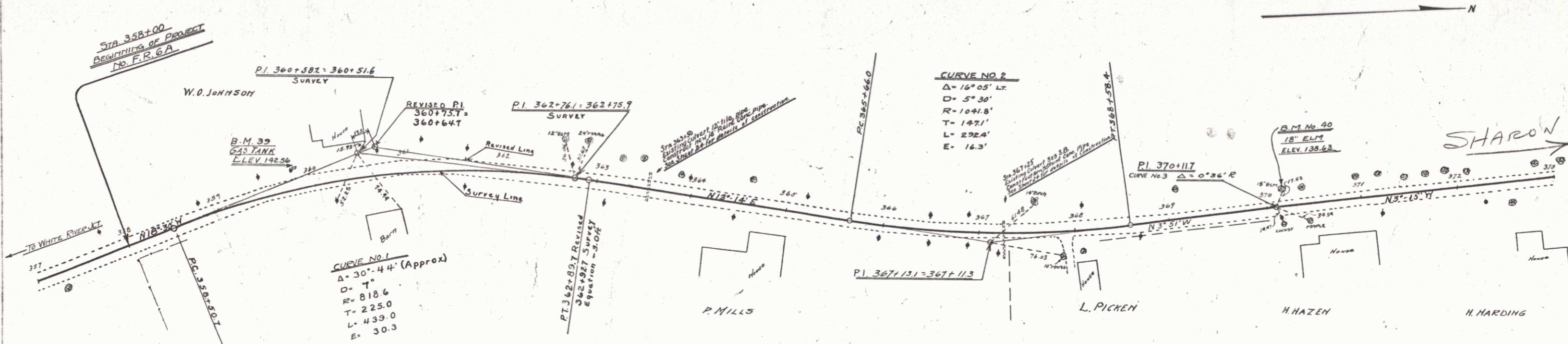
STA 363+50 18" Reinf. Concrete Pipe Length 36'
 Conc. Class A (1:2-4) 1.9 cu yds
 Reinf. Steel 54 lbs.

STA 367+25 30" Reinf. Concrete Pipe Length 40'
 Conc. Class A (1:2-4) 3.5 cu yds
 Reinf. Steel 50 lbs.

WOOD GUARD RAIL
 RIGHT
 363+38-365+62 Length 24'
 367+13-367+37 24'

CABLE GUARD RAIL
 LEFT
 363+38-372+38 Length 920'

REC. ROAD STATE ILLINOIS FEDERAL SHEET 1000
 D. NO. 14 STATE PROJ. NO. 1-34 100 SHEETS
 1928 3 79
 SERIES FR. E A



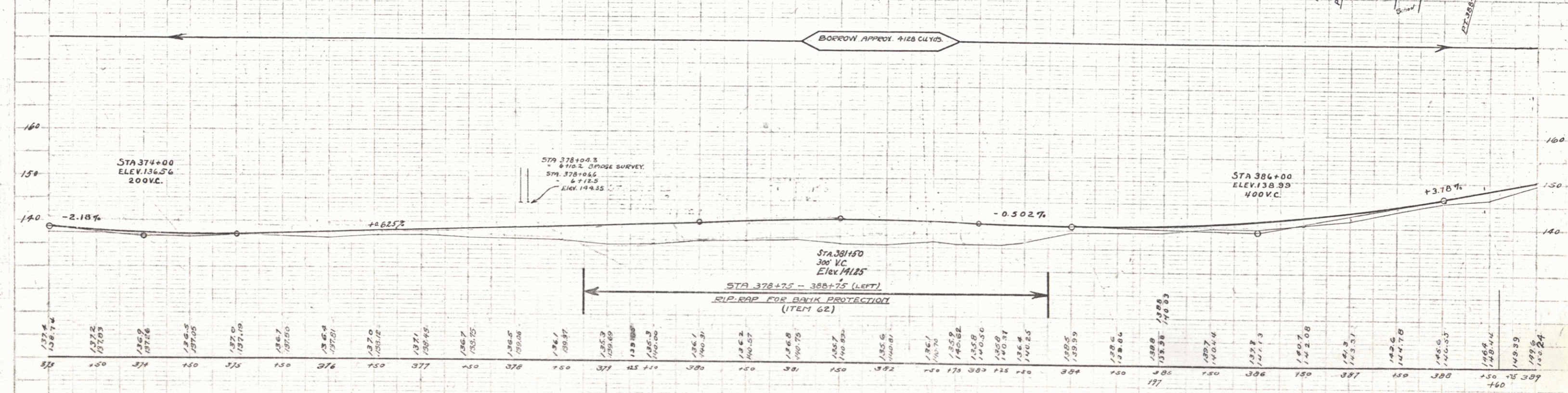
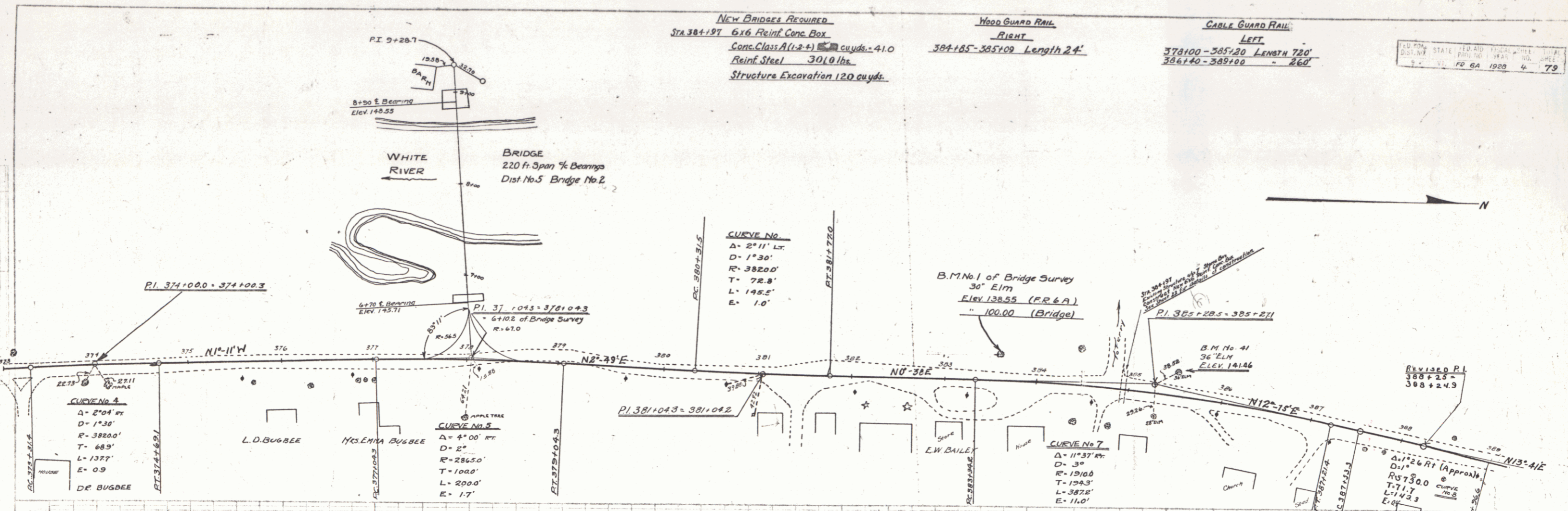
B.M. No. 39 GAS PUMP LEFT OF STA 359+87 ELEV. 142.56
 B.M. No. 40 18" ELM. LEFT OF STA 370+20 ELEV. 136.63

SERIES FR. E A
 SHEET 3 OF 79

New Bridges Required
 STA 384+197 6x6 Reinf. Conc. Box
 Conc. Class A(1-2-4) 4 cu yds - 41.0
 Reinf. Steel 3010 lbs.
 Structure Excavation 120 cu yds.

WOOD GUARD RAIL
 RIGHT
 384+85-385+09 Length 24'

CABLE GUARD RAIL
 LEFT
 378+00-385+30 Length 720'
 386+40-389+00 " 260'



B.M. NO. 41 36' ELM LEFT OF STA 385+57 ELEV. 141.44
 B.M. NO. 1 30' ELM LEFT OF STA 383+50 ELEV. 138.55 (F.R. 6A) · ELEV. 100.00 (BRIDGE SURVEY)

New Culverts Required
 STA 402+25 15' Rein. Conc. Length 40'
 Conc. Class B (1-2-5) 2.6 cu yds
 Reinf. Steel 33 lbs.
 STA 404+00 10' Rein. Conc. Pipe Length 36'
 VE Curvy. Galv. Metal Pipe Length 18' (Extension)
 Conc. Class A (1-2-4) 1.0 cu yds.
 Reinf. Steel 27 lbs.

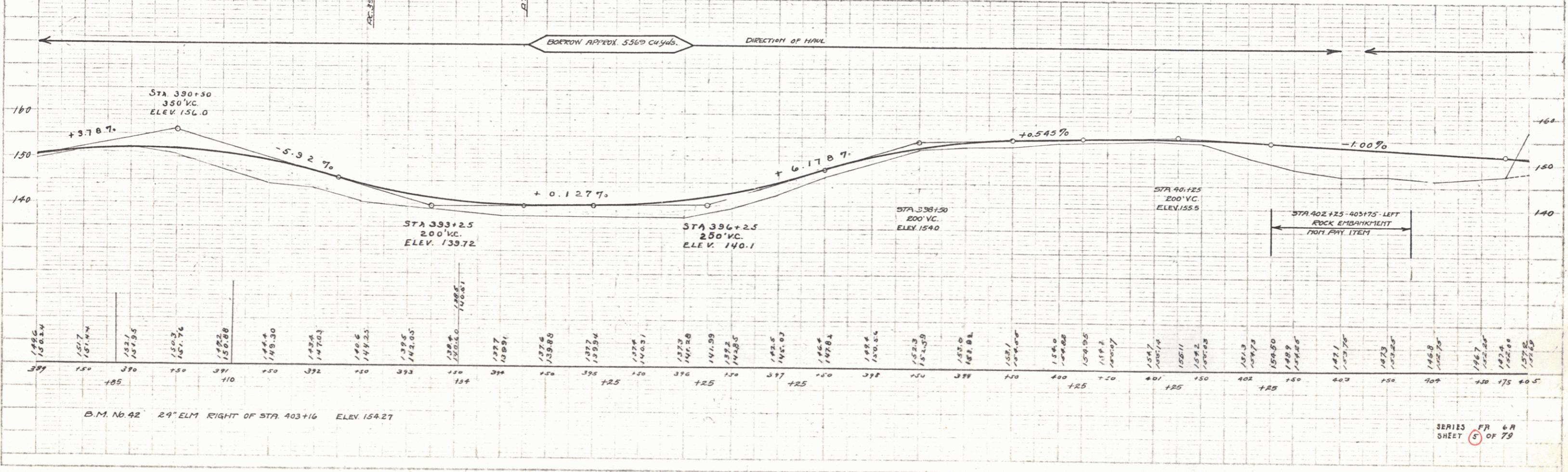
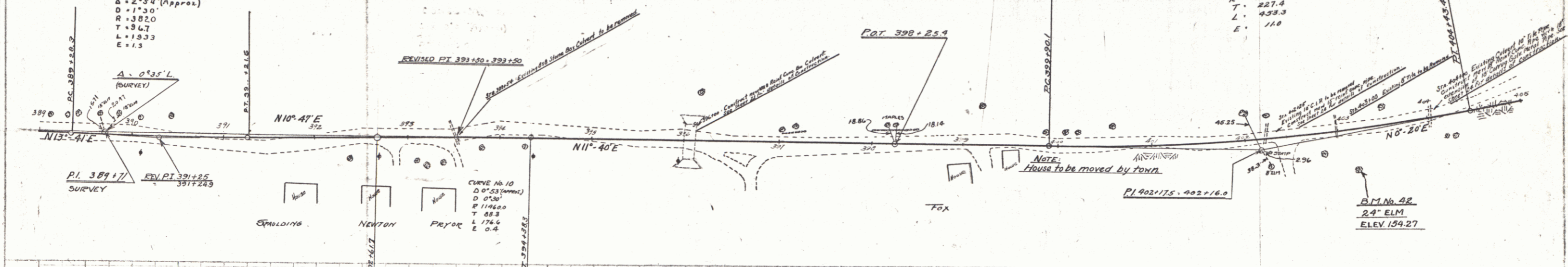
New Bridges Required
 STA 396+00 10AB Rein. Conc. Box
 Conc. Class A (1-2-4) 70.0 cu yds.
 Reinf. Steel 5630 lbs.
 Struct. Excav 150 cu yds.

Wood Guard Rail
 RIGHT
 395+00-396+12 Length 24'
 403+00-404+12 " 24'
 408+13-408+37 " 24'

Cable Guard Rail
 LEFT
 389+00-393+04 Length 444'
 395+10-405+00 " 990'
 RIGHT
 393+44-394+24 " 80'

CURVE No 9
 Δ = 2°54' (Approx.)
 D = 1°30'
 R = 382.0
 T = 8.67
 L = 193.3
 E = 1.3

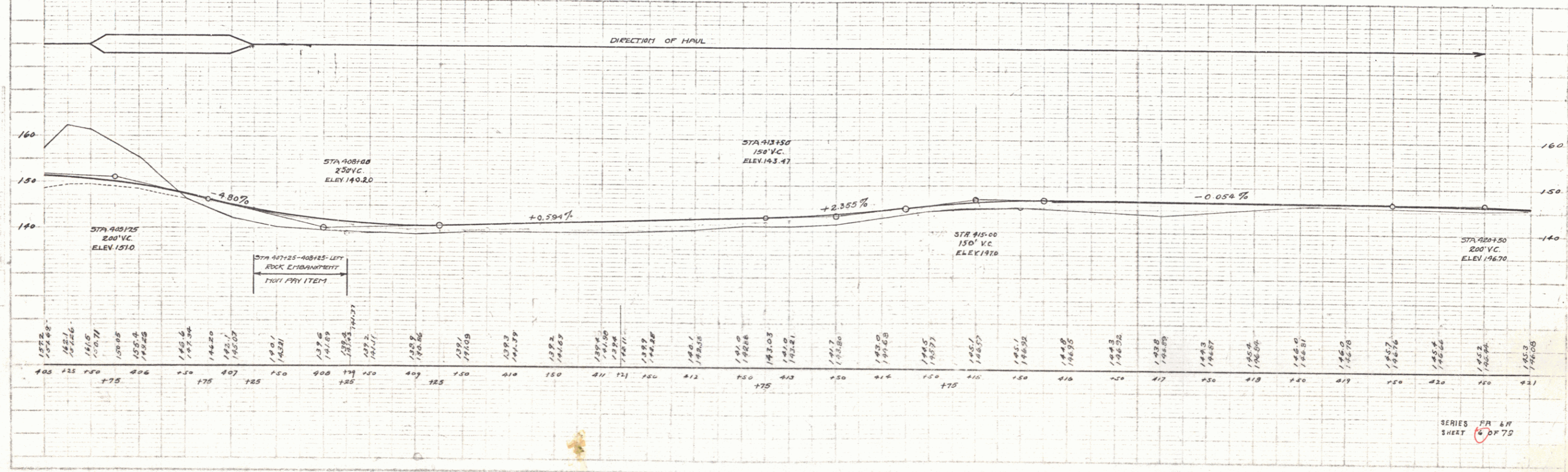
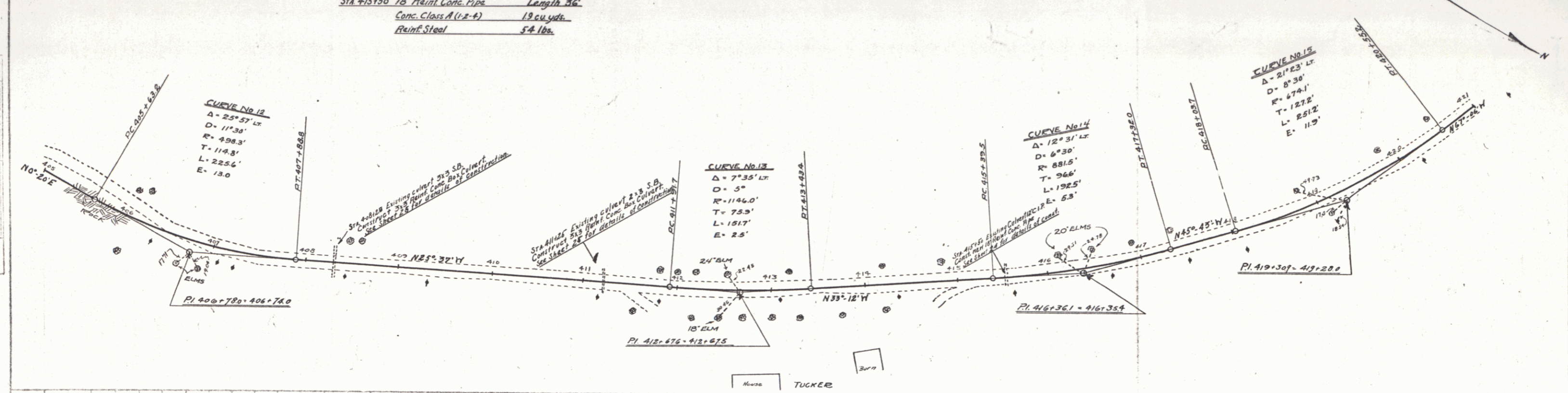
CURVE No 11
 Δ = 11°20' LF
 D = 2°30'
 R = 2292.0
 T = 227.4
 L = 433.3
 E = 110



B.M. No. 42 24" ELM RIGHT OF STA. 403+16 ELEV. 154.27

4

NEW CULVERTS REQUIRED		WOOD GUARD RAIL		CABLE GUARD RAIL	
STA 408129	3x3 Reinf. Conc. Box Culvert	41117-41132	Length 24'	407131-408175	Length 144'
	Conc. Class A (1-2-4)	415130-415162	Length 32'	417100-420120	Length 380'
	Reinf. Steel 1448 lbs.				
STA 41125	3x3 Reinf. Conc. Box Culvert				
	Conc. Class A (1-2-4)				
	Reinf. Steel 1078 lbs.				
STA 415150	18" Reinf. Conc. Pipe				
	Length 36'				
	Conc. Class A (1-2-4)				
	Reinf. Steel 54 lbs.				

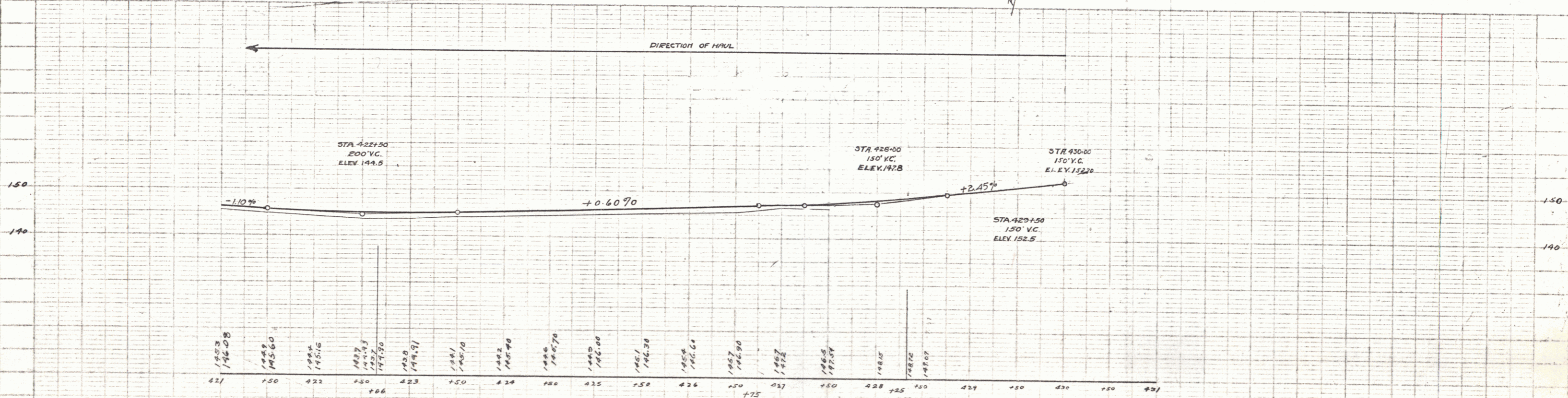


New Culverts Required
 Sta. 422+66 3x3 Reinf. Conc. Box Culvert
 Conc. Class A (1-2-4) 17.5 cu yds
 Reinf. Steel 1142 lbs.

Wood Guard Rail
 LEFT
 422+54-422+78 Length 24'
 RIGHT
 422+54-422+78 24'

PROJ. NO.	STATION	DATE	SHEET	TOTAL
FR 6A	1929	7	79	

PLAN	FR 6A
DATE	1929
BY	
CHECKED	
APPROVED	

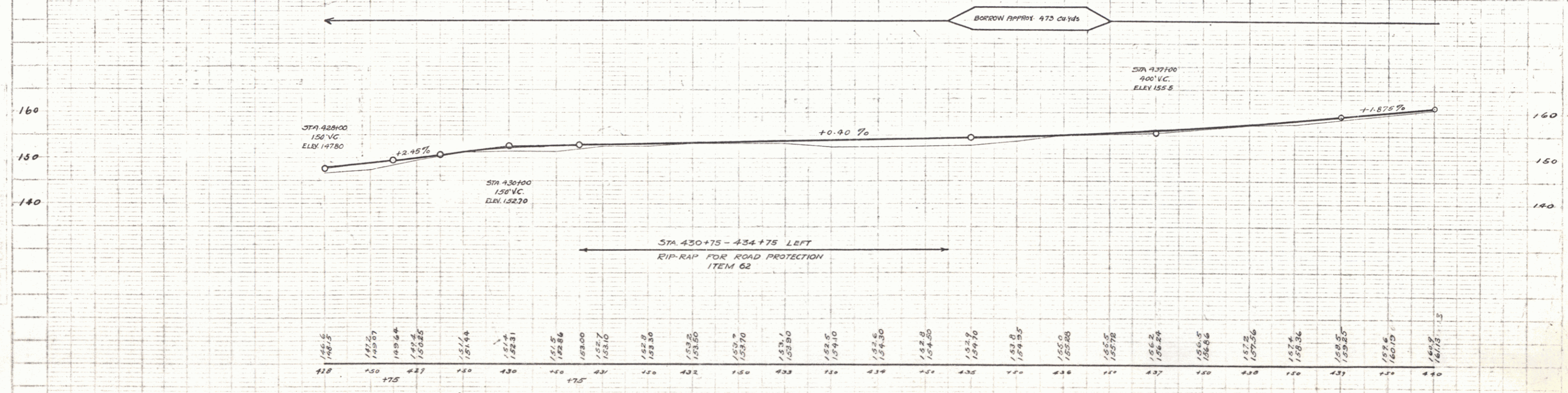
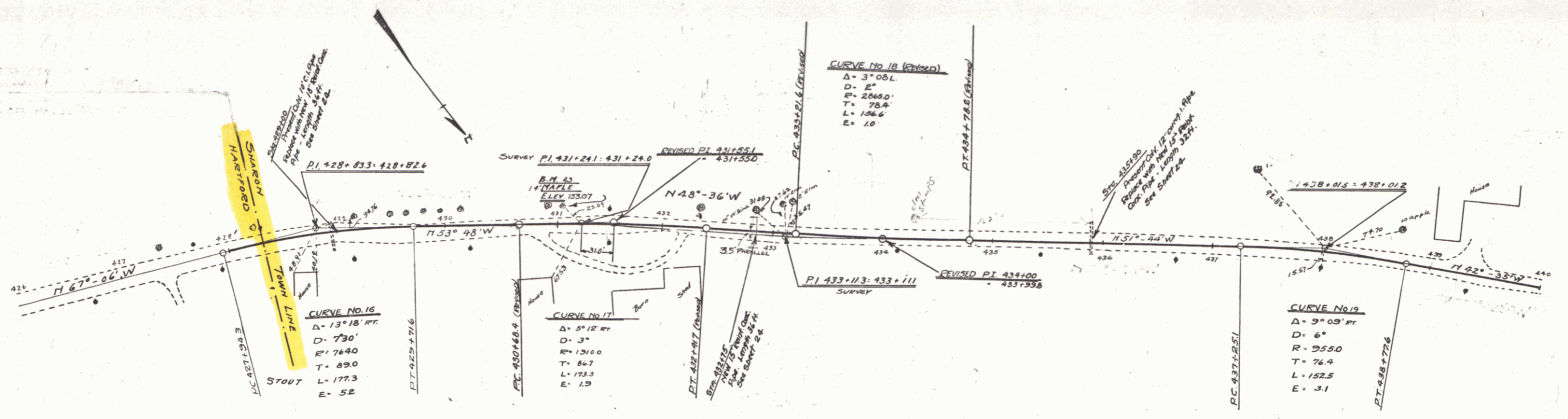


B.M. 43 14' MAPLE LEFT STA. 431+03 ELEV. 153.07

CABLE GUARD RAIL
LEFT
 Sta 430+75-434+75 Length 900'

WOOD GUARD RAIL REQUIRED
LEFT
 Sta 428+85 to Sta 429+12 24 Ft.
 435+78 " " 436+02 24 Ft.
RIGHT
 Sta 428+88 " " Sta 429+12 24 Ft.
 " 432+16 " " 432+87 24 Ft.
 " 435+30 " " 436+02 24 Ft.

NEW CULVERTS REQUIRED
 Sta. 429+00 18" Reinforced Concrete Pipe Length 36 ft.
 Concrete Class B(104-1) 13 cu yds.
 Reinforcing Steel 54 lbs.
 Sta. 432+75 15" Reinforced Concrete Pipe Length 36 ft.
 Concrete Class B(104-1) 24 cu yds.
 Reinforcing Steel 33 lbs.
 Sta. 435+90 15" Reinforced Concrete Pipe Length 36 ft.
 Concrete Class B(104-1) 24 cu yds.
 Reinforcing Steel 33 lbs.



BM-43 14' MAPLE LEFT STA. 431+03 ELEV 153.07

Series FA 67
 Sheet 8 of 79

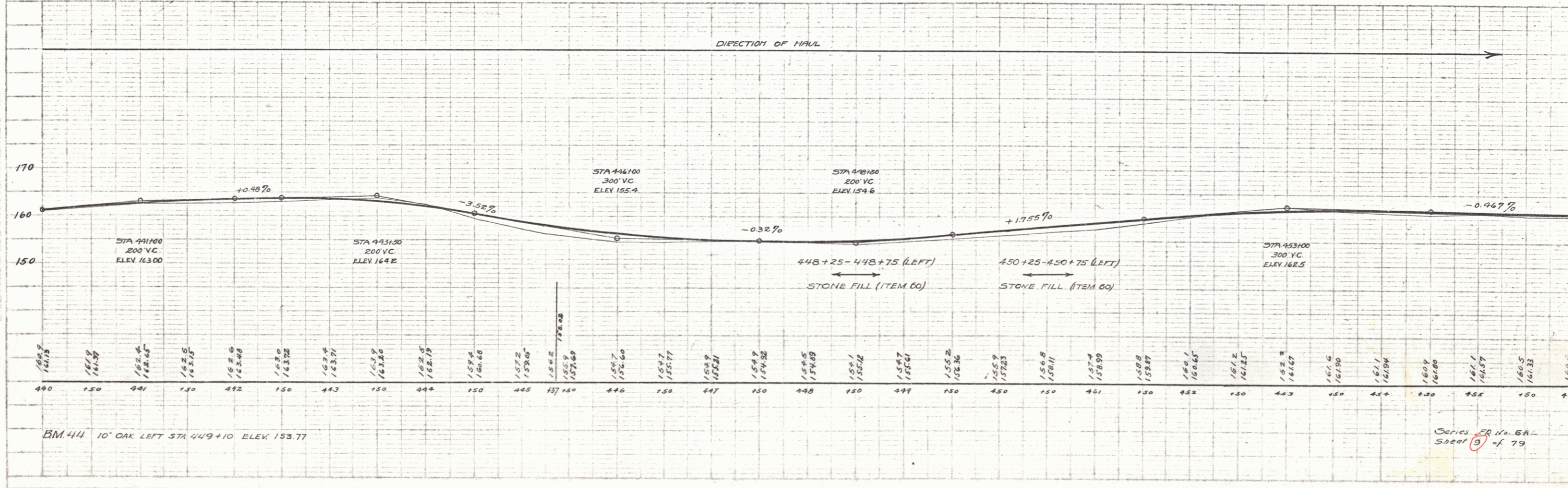
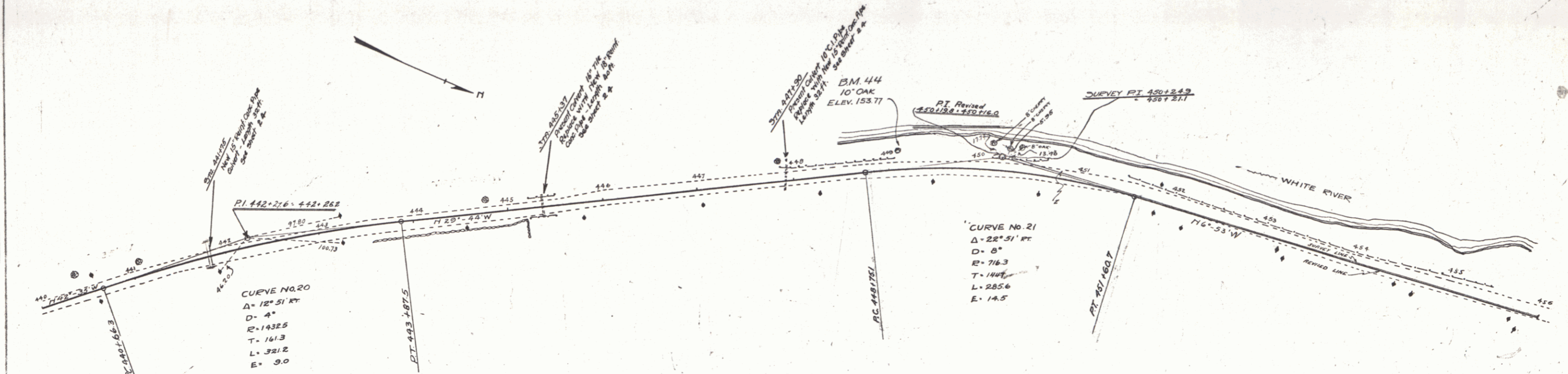
PLAN
 1/2" = 100'
 1/4" = 200'

VERTICAL
 1" = 10'
 1/4" = 250'

WOOD GUARD RAIL		CABLE GUARD RAIL	
RIGHT		LEFT	
445+25 - 445+49	Length 24'	444+26 - 445+54	Length 128'
447+63 - 448+02	" 24'	447+76 - 450+00	" 824'
LEFT			
441+63 - 441+87	Length 24'		

NEW CULVERTS REQUIRED			
Stn. 441+75	15" Rivet Coac Pipe	Length 32 ft	(15" Rivet Coac Pipe)
	Concrete Class D (1-24-3)	2.5 cu yds	Length 128 ft
	Reinforcing Steel	33 lbs.	
Stn. 445+37	18" Rivet Coac Pipe	Length 40 ft	
	Concrete Class A (1-1-4)	1.9 cu yds	
	Reinforcing Steel	29 lbs.	
Stn. 447+90	15" Rivet Coac Pipe	Length 32 ft	
	Concrete Class B (1-24-3)	2.6 cu yds	
	Reinforcing Steel	33 lbs.	

DIST. NO.	STATE	FED. AID	FISCAL YEAR	SHEET NO.	TOTAL SHEETS
6	VI	FR-62	1928	9	79



Series 22 No. 6A
 Sheet 9 of 79

81

WOOD GUARD RAIL

RIGHT	LEFT
469+38 - 469+62 Length 24'	456+00 - 470+00 Length 1400'
458+03 - 458+27 " 24'	
459+88 - 460+12 " 24'	
462+18 - 462+42 " 24'	

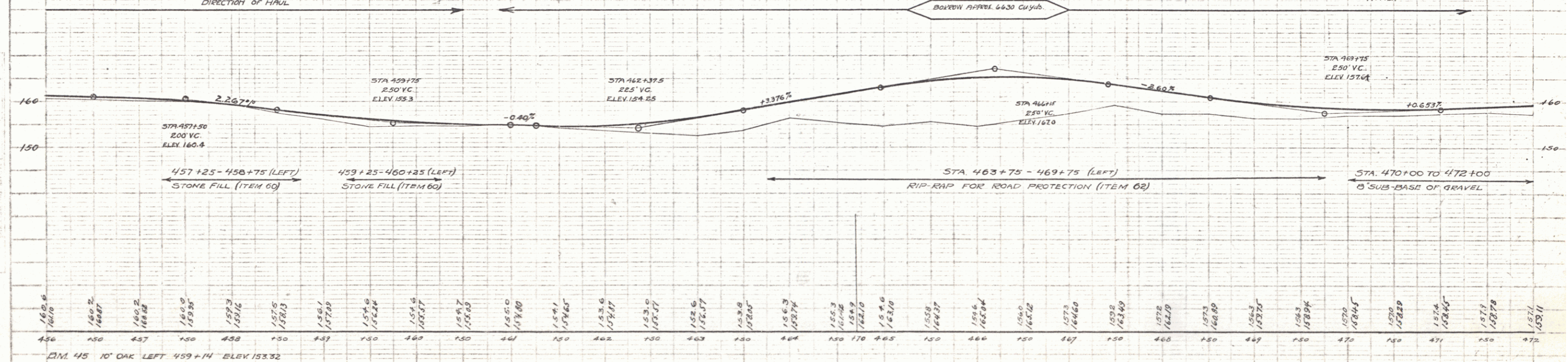
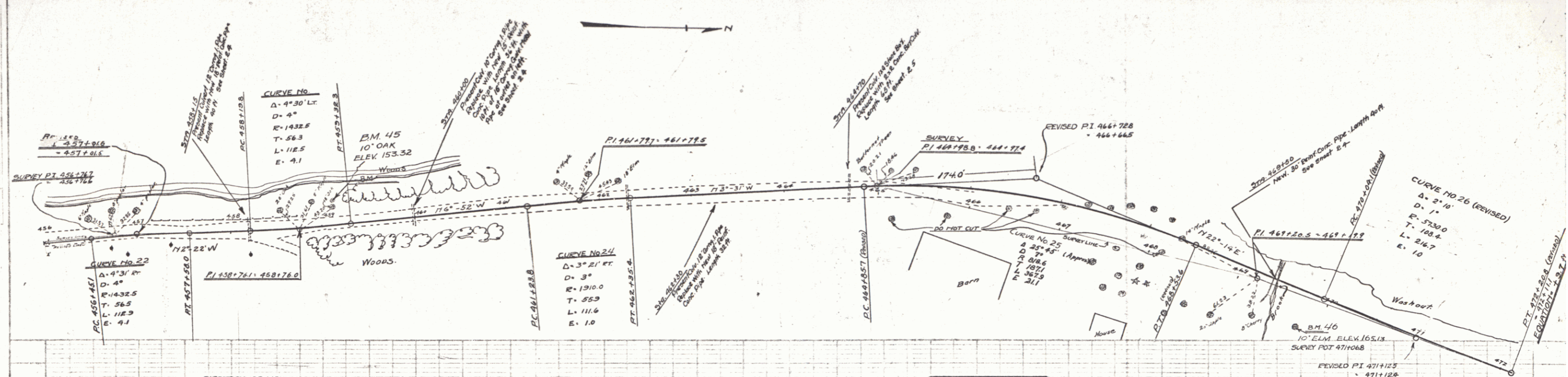
CABLE GUARD RAIL

LEFT	RIGHT
456+00 - 470+00 Length 1400'	464+52 - 464+90 " 40'

PIPE CULVERTS REQUIRED

Sta	Material	Length	Notes
Sta 458+15	18" Reinforced Concrete Class A (1-2-4)	40 ft	19 Cu Yds. 54 lbs. Reinforcing Steel
Sta 460+00	15" Reinforced Concrete Class B (1-2-4-5)	36 ft	15 Cu Yds. 17 lbs. Reinforcing Steel
Sta 462+30	18" Reinforced Concrete Class A (1-2-4)	32 ft	15 Cu Yds. 54 lbs. Reinforcing Steel
Sta 464+70	24" Reinforced Concrete Class A (1-2-4)	40 ft	19.6 Cu Yds. 1298 lbs. Reinforcing Steel
Sta 469+50	36" Reinforced Concrete Class A (1-2-4)	40 ft	3.8 Cu Yds. 58 lbs. Reinforcing Steel

DIST. NO.	STATE	FED. AID PROJ. NO.	FISCAL YEAR	SHEET NO.	TOTAL SHEETS
8	VT	FR 6A	1978	10	79



Station	Elevation
456.0	160.0
457.0	159.2
458.0	158.5
459.0	157.8
460.0	157.1
461.0	156.4
462.0	155.7
463.0	155.0
464.0	154.3
465.0	153.6
466.0	152.9
467.0	152.2
468.0	151.5
469.0	150.8
470.0	150.1
471.0	149.4
472.0	148.7

Series 12 No. 6A - Sheet 10 of 79

9/10

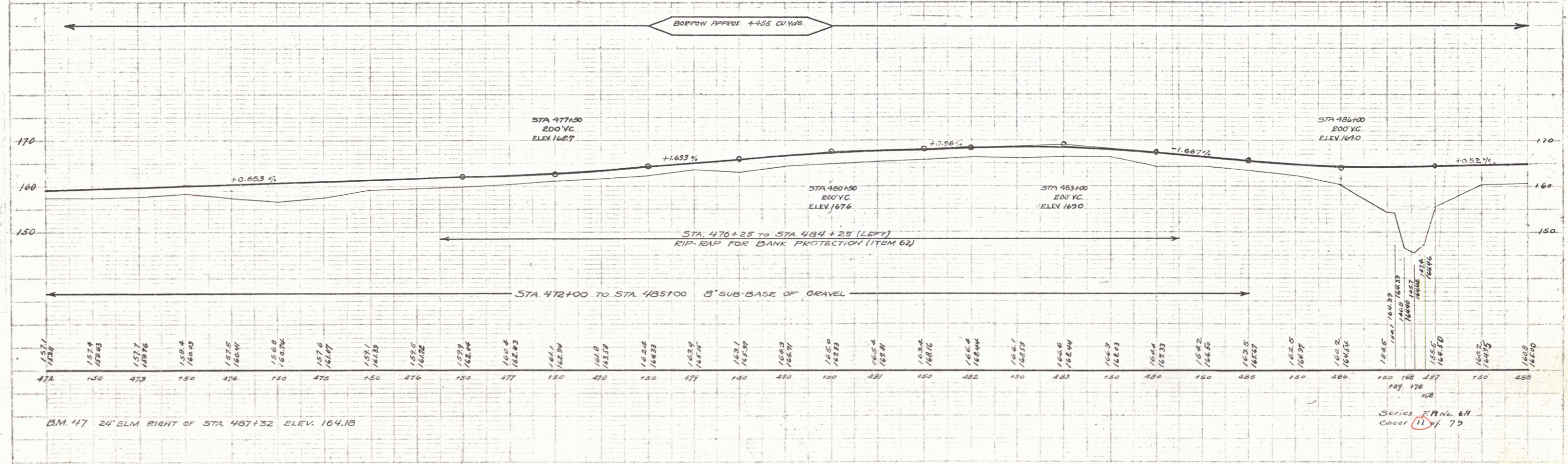
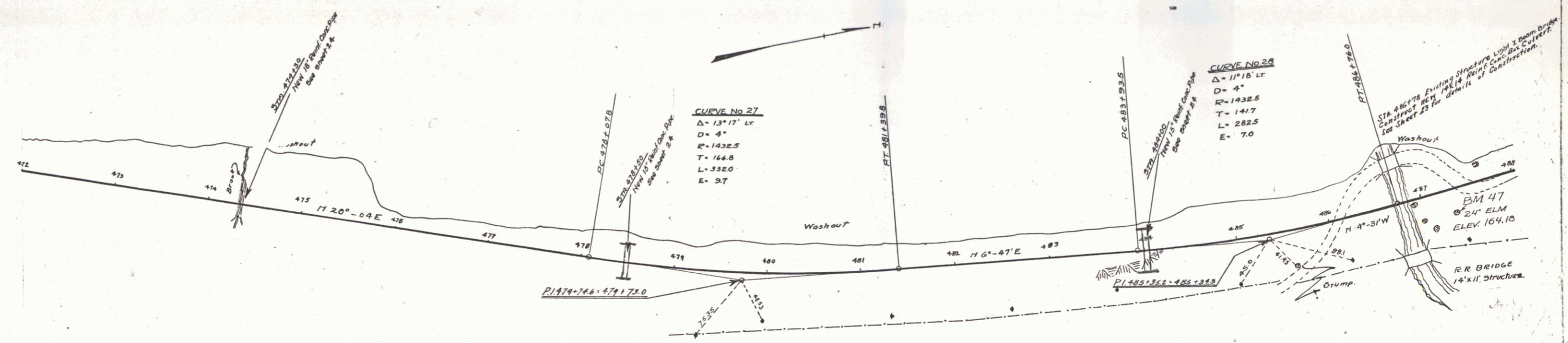
WOOD GUARD RAIL
RIGHT
 471.38-478.62 Length 28'
 483.88-484.12 " 2'
 474+18-474+42 Length 24'
LEFT
 474+18-474+42 Length 24'

CABLE GUARD RAIL
LEFT
 476+56-485.10 Length 88'
 486.24-488.10 " 176'
RIGHT
 486+00-487.49 Length 149'

NEW BRIDGES REQUIRED
 STA 486+78 14.14 Reinforced Conc. Culvert
 Conc. Class A (1-2-4) 190.0 Cuyds.
 Reinf. Steel 190.40 lbs
 Structural Exam. 50.0 Cuyds

NEW CULVERTS REQUIRED
 5m 474+30 18" Reinforced Conc. Pipe Length 32 ft
 Concrete Class A (1-2-4) 1.9 Cuyds.
 Reinforcing Steel 54 lbs.
 5m 478+50 15" Reinforced Conc. Pipe Length 32 ft
 Concrete Class B (1-2-3) 2.4 Cuyds.
 Reinforcing Steel 33 lbs.
 5m 484+00 15" Reinforced Conc. Pipe Length 36 ft
 Concrete Class B (1-2-3) 2.4 Cuyds.
 Reinforcing Steel 33 lbs.

FIELD ROAD STATION 474+18
 DIST. NO. 11
 PROJECT NO. 1106
 YEAR 1928
 SHEETS 79



B.M. 47 24' ELM RIGHT OF STA 487+32 ELEV. 164.13

Series E.R. No. 6A
 Check 11/79

PLAN
 A. D. WOOD
 E. PLATTINGBY
 CIVIL ENGINEERS
 100 N. W. 1st St.
 WASHINGTON, D. C.

PLAN
 A. D. WOOD
 E. PLATTINGBY
 CIVIL ENGINEERS
 100 N. W. 1st St.
 WASHINGTON, D. C.

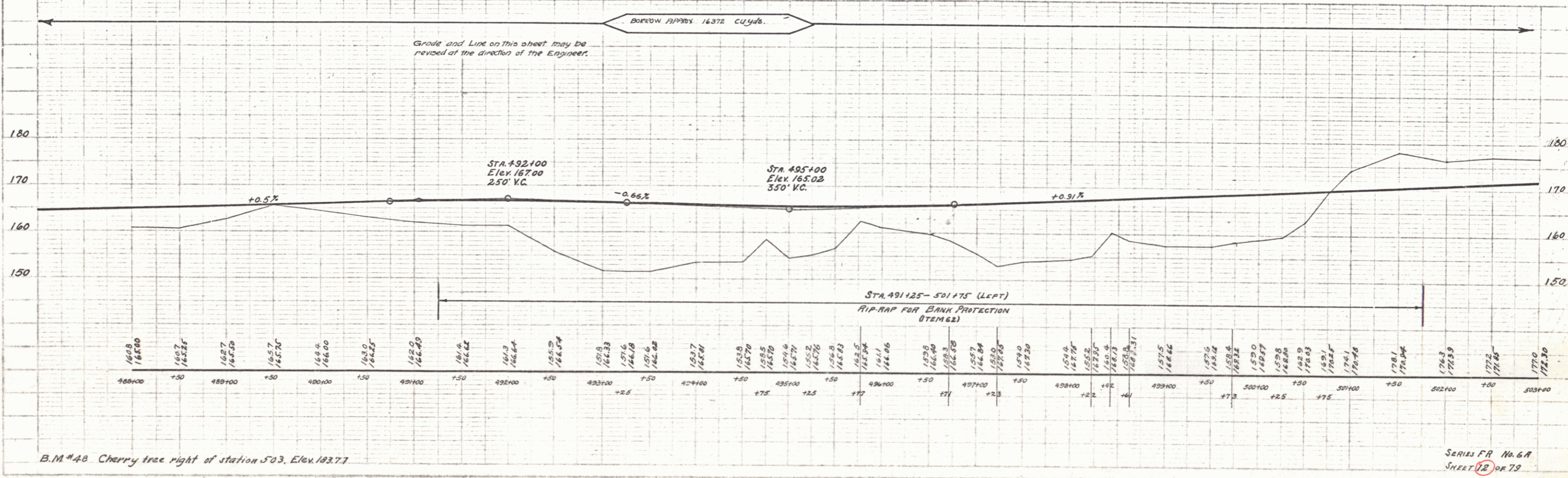
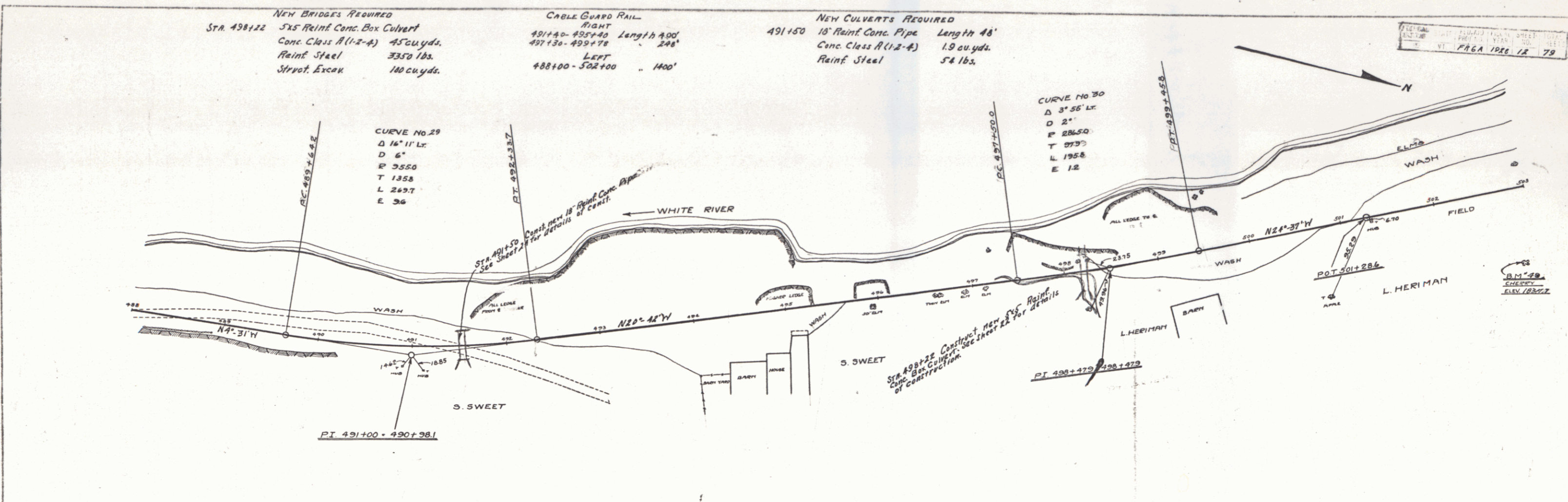
NEW BRIDGES REQUIRED
 STA. 498+22 5x5 Reinf. Conc. Box Culvert
 Conc. Class A (1-2-4) 45 cu. yds.
 Reinf. Steel 3350 lbs.
 Strout. Exca. 140 cu. yds.

CABLE GUARD RAIL
 RIGHT
 491+40-495+40 Length 400'
 497+30-499+78 " 248'
 LEFT
 488+00-502+00 " 400'

NEW CULVERTS REQUIRED
 491+50 18" Reinf. Conc. Pipe Length 48'
 Conc. Class A (1-2-4) 1.9 cu. yds.
 Reinf. Steel 54 lbs.

CURVE NO. 29
 Δ 16° 11' Lt.
 D 6"
 P 355.0
 T 135.8
 L 249.7
 E 36

CURVE NO. 30
 Δ 3° 55' Lt.
 D 2"
 P 285.0
 T 97.3
 L 195.8
 E 12



B.M. 48 Cherry tree right of station 503. Elev. 193.77

SERIES FR No. 6A
 SHEET 12 OF 19

112

PLAN
A.D. WOOD
E. PLATTING
6442
4992

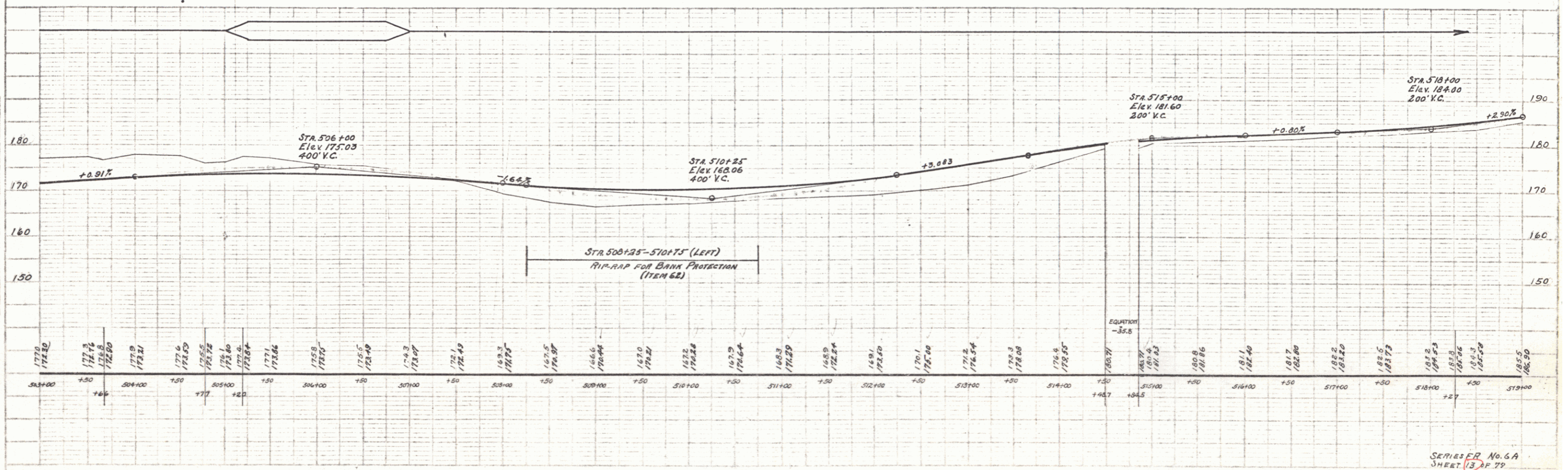
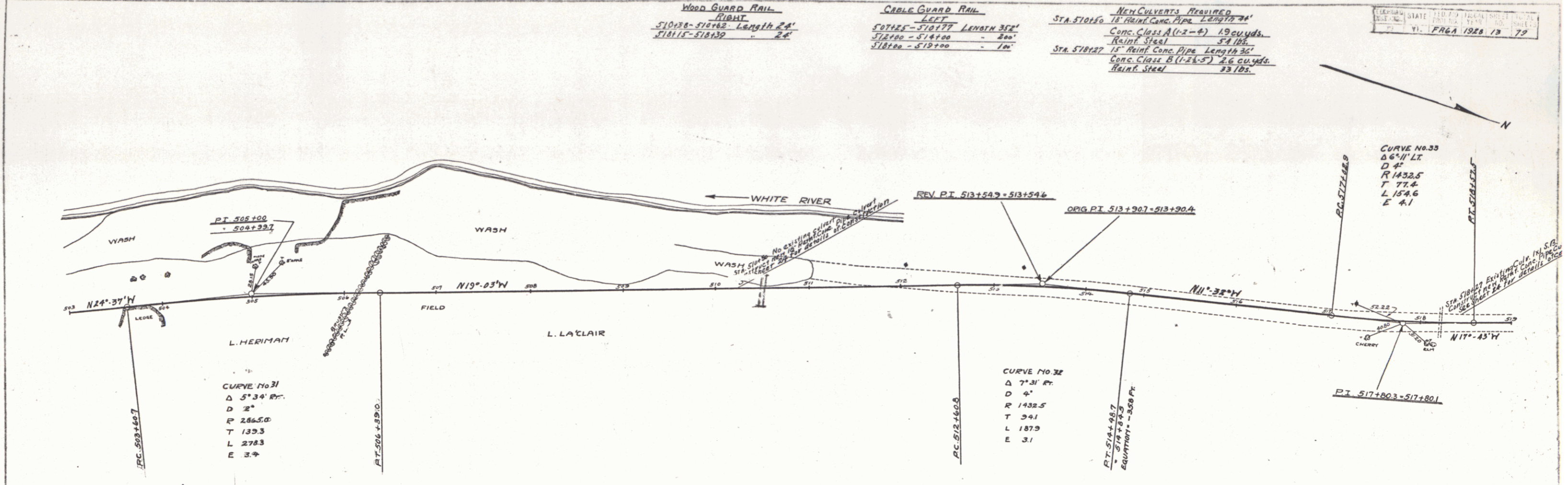
PROFILE
A.D. WOOD
E. PLATTING
6442
4992

WOOD GUARD RAIL
RIGHT
51015-51062 Length 47'
51015-51039 " 24'

CABLE GUARD RAIL
LEFT
50745-51017 Length 272'
51210-51410 " 200'
51820-51910 " 70'

NEW CULVERTS REQUIRED
Sta. 51015 18" Reinf. Conc. Pipe Length 74'
Conc. Class A (1-2-4) 19 cu. yds.
Reinf. Steel 54 lbs.
Sta. 51827 15" Reinf. Conc. Pipe Length 36'
Conc. Class B (1-2-5) 4.6 cu. yds.
Reinf. Steel 33 lbs.

MISSOURI STATE HIGHWAY DISTRICT NO. 13
VI. FRGA 1928 13 79

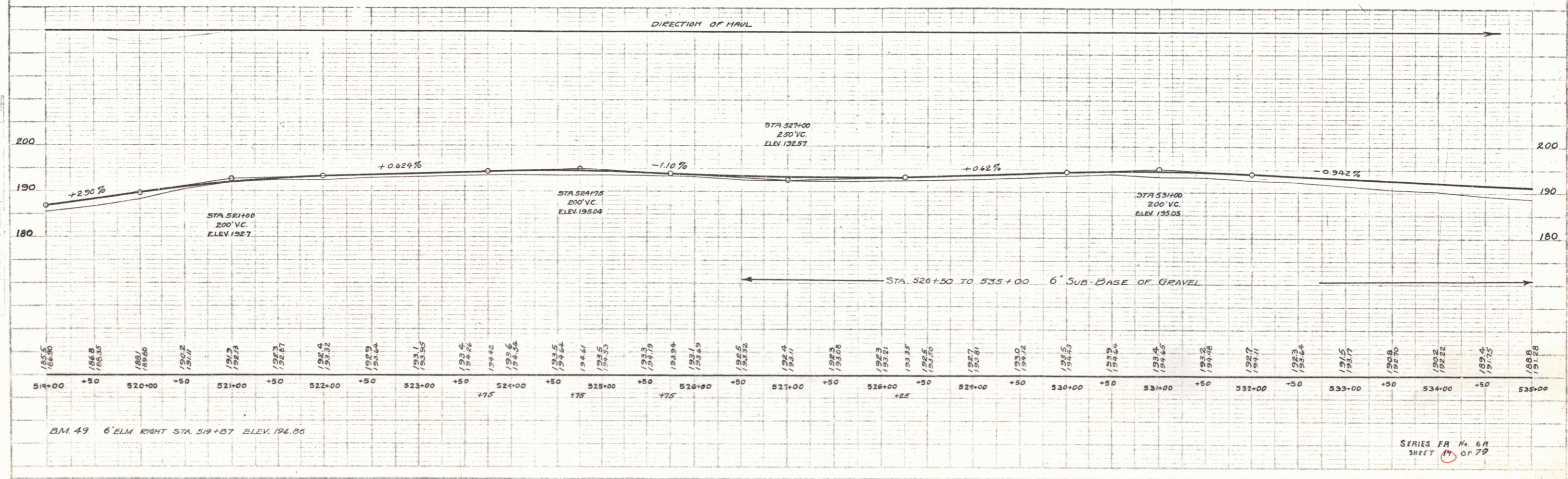
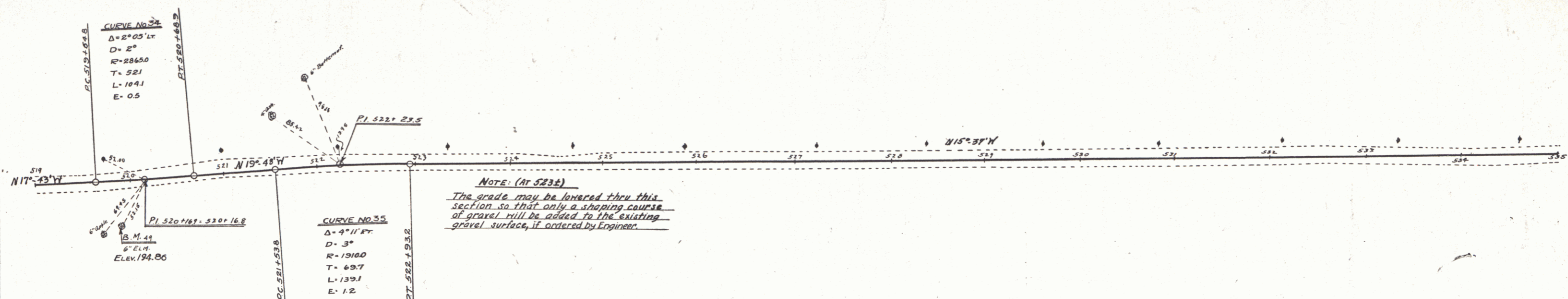


SERIES ER No. 6A
SHEET 13 OF 79

13

CABLE GUARD RAIL
LEFT
 519+00 - 519+44 Length 44'

FIELD ROAD DIST. NO.	STATE	FED. ROAD DIST. NO.	LOCAL ROAD NO.	SHEET NO.	TOTAL SHEETS
9	PA	6R	1928	14	79



B.M. 49 6" ELM RIGHT STA. 519+57 ELEV. 194.86

SERIES FR No. 6R
 SHEET 14 OF 79

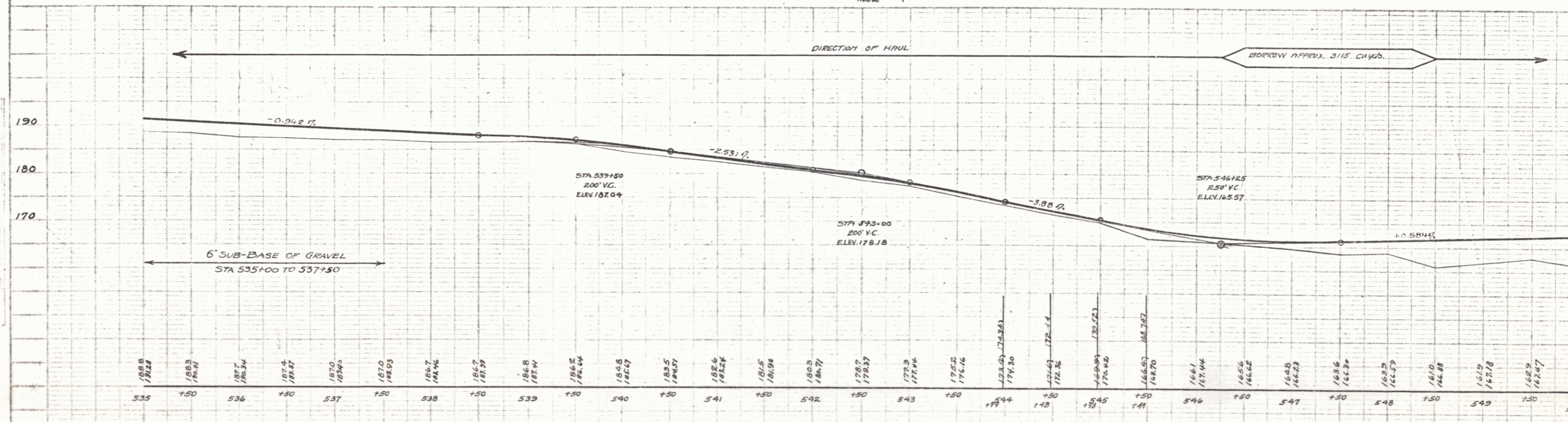
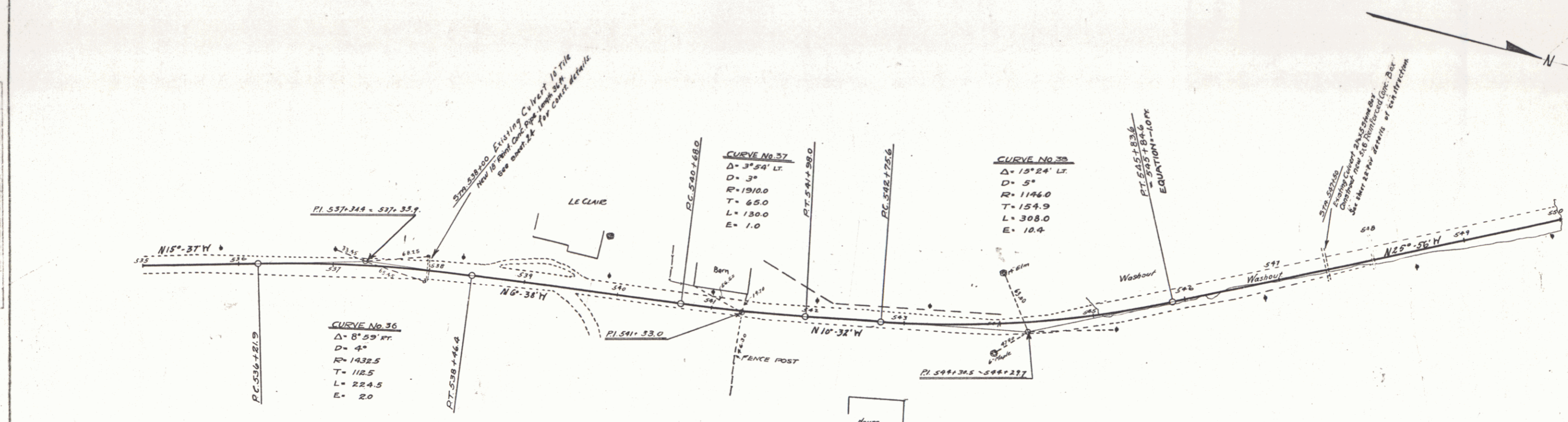
WOOD GUARD RAIL
LEFT
 537+00-538+12 Length 24'
RIGHT
 537+00-538+12 - 24'
 537+35-547+62 - 24'

CABLE GUARD RAIL
LEFT
 541+76-547+24 Length 48'
 544+25-547+77 - 35'

NEW BRIDGES REQUIRED
 STA 547+30 5'x6' Rein. Conc. Box Length 33 ft
 Concrete Class A(1-4) 1 Cu. Yd.
 Reinforcing Steel 2840 Lbs.
 Structural Excavation 120 Cu Yds

NEW CULVERTS REQUIRED
 STA 538+00 18" Rein. Conc. Pipe Length 36 ft
 Concrete Class A(1-4) 18 Cu Yds
 Reinforcing Steel 34 Lbs.

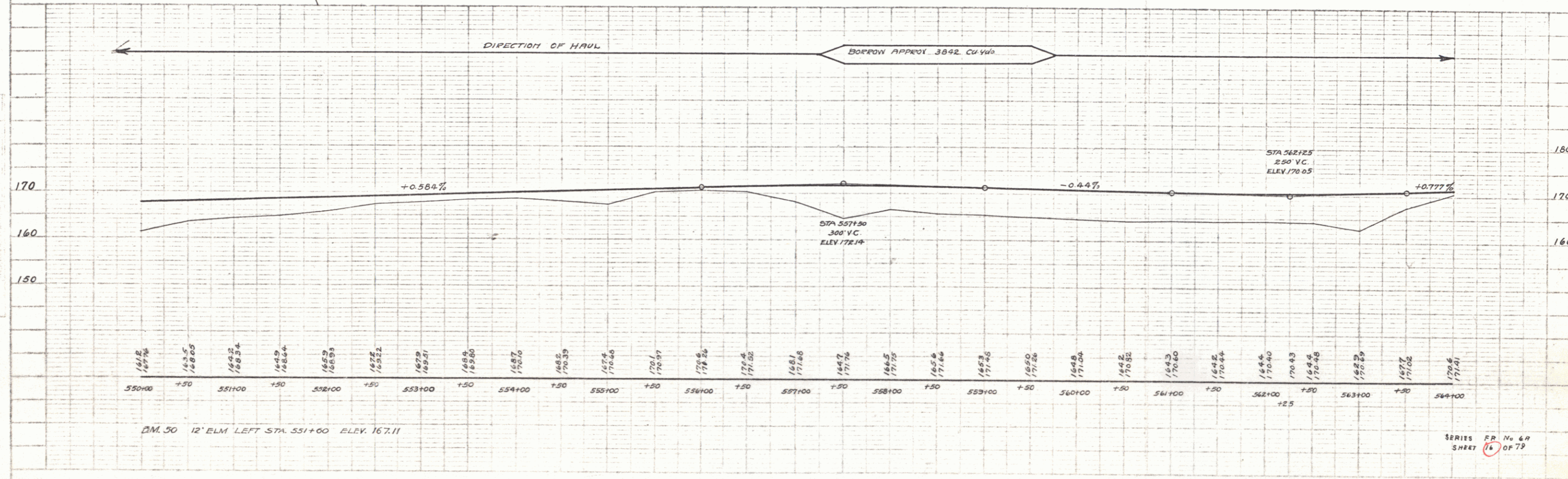
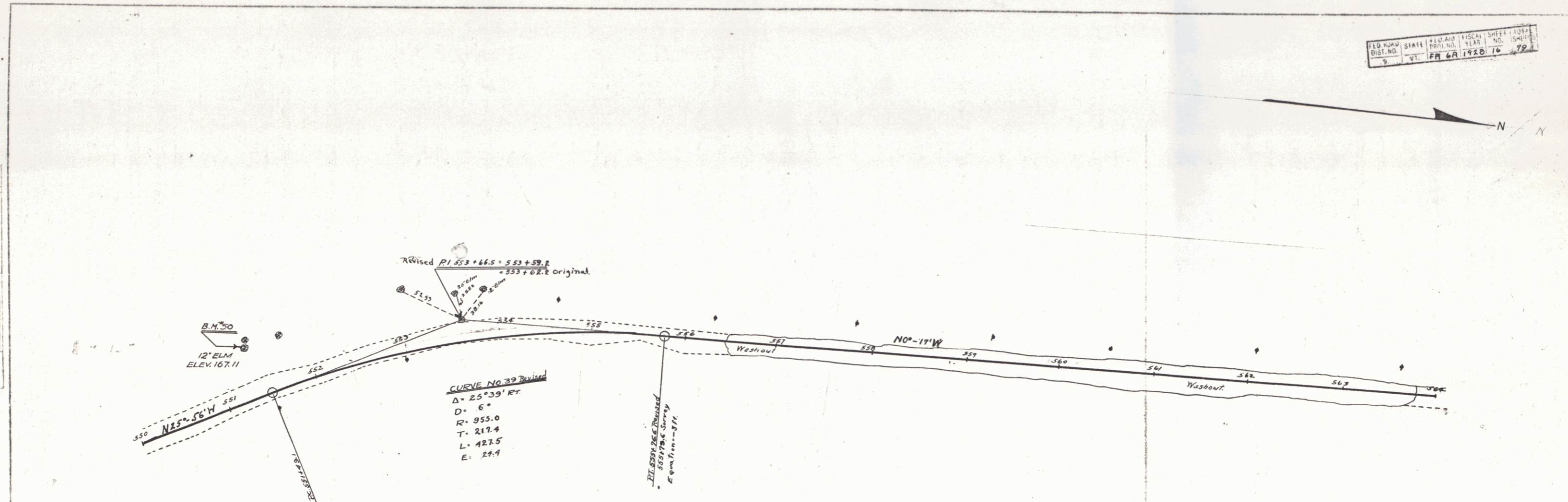
FED. ROAD DIST. NO.	STATE	PROJECT NO.	SHEET NO.	TOTAL SHEETS
9	VT.	FR 6A 1928	15	79



PLAN
 1/2" = 100'
 1/4" = 200'

PROFILE
 1/4" = 10'

SERIES FR No. 6A
 SHEET 15 OF 79



PLAN
 SCALE 1" = 40'
 REPORT MADE BY CONTRACTOR
 DATE 10/1/28
 SHEET NO. 79 OF 79

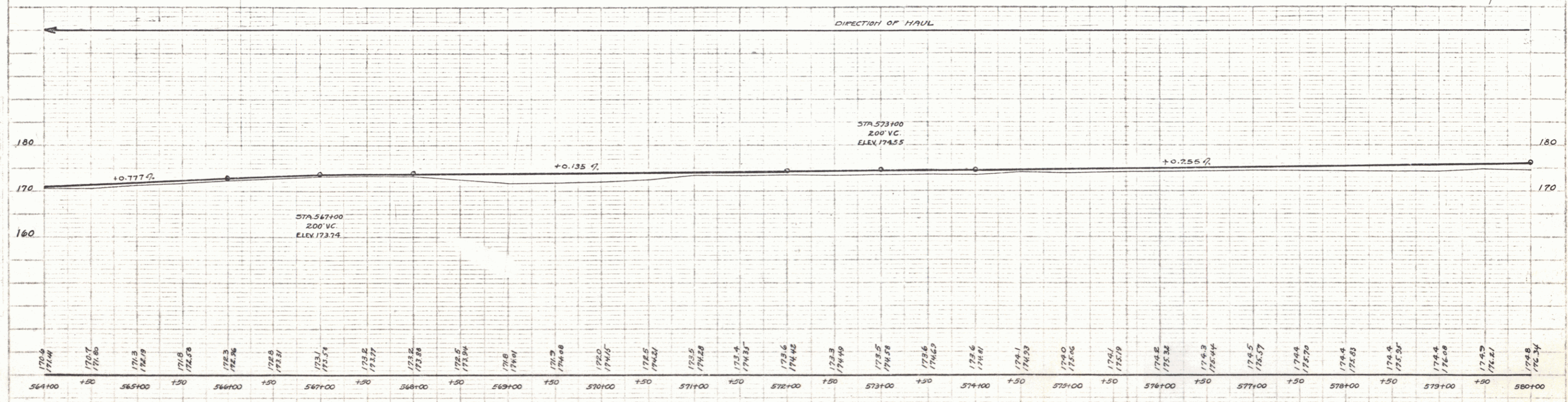
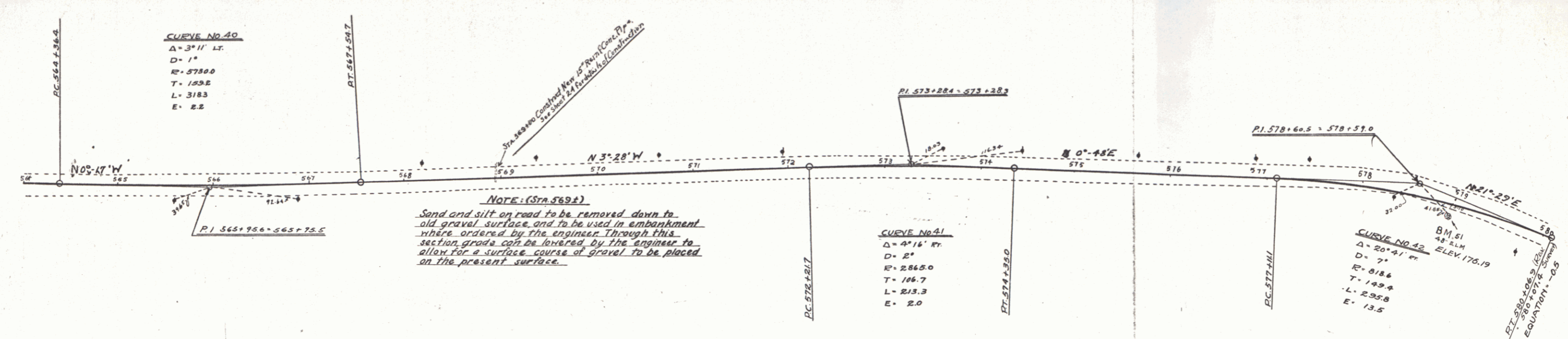
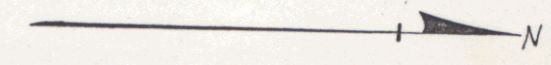
PROFILE
 SCALE 1" = 40'
 REPORT MADE BY CONTRACTOR
 DATE 10/1/28
 SHEET NO. 79 OF 79

156

Wood Guard Rail Required
 On Right 560+00 to 569+12 Length 24'
 On Left 560+00 to 569+12 Length 24'

NEW CULVERTS REQUIRED
 STA 569+00 15' Reinf Conc. Pipe Length 32'
 Conc. Class B (1-2k-5) 2.6 cu yds
 Reinf. Steel 33 lbs

FILE NO.	STATE	LOCAL SHEET	DATE
9	VA	6A 1928	17 79



BM 51 48' ELM RIGHT STA. 578+96 ELEV 176.19

SERIES PA No. 6A
 SHEET 17 OF 29

16

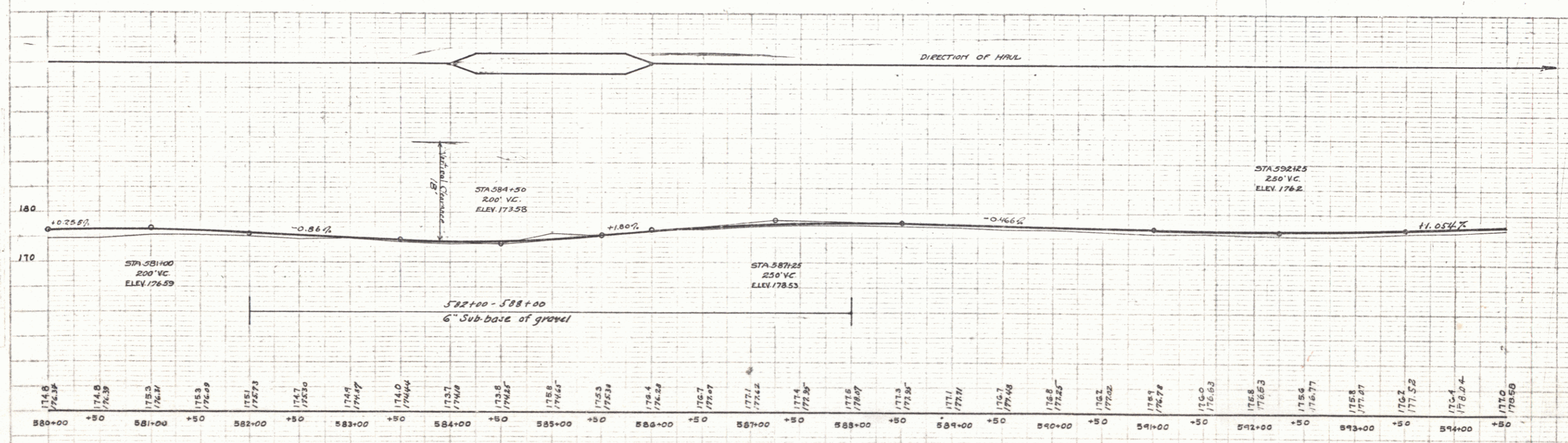
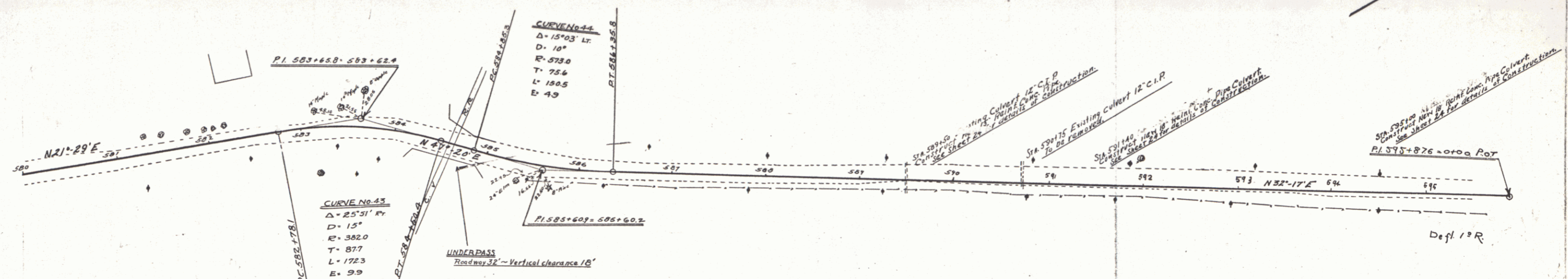
Note (At 584+)
 This section to be re-cross-sectioned during staking out and line to be revised to conform to new abutments of railroad underpass, which are now being built.

NEW CULVERTS REQUIRED

Sta. 589+50	18" Rein. Conc. Pipe Length 33'
Conc. Class B (1-2-5) 2.6 cu yds.	
Rein. Steel 33 lbs.	
Sta. 591+00	18" Rein. Conc. Pipe Length 33'
Conc. Class B (1-2-4) 1.9 cu yds.	
Rein. Steel 34 lbs.	
Sta. 595+00	18" Rein. Conc. Pipe Length 33'
Conc. Class B (1-2-4) 1.9 cu yds.	
Rein. Steel 34 lbs.	

WOOD GUARD RAIL

589+30-589+62	Length 24'
RIGHT	
589+38-589+62	" 24'
591+28-591+52	" 24'
594+88-595+12	" 24'
LEFT	
591+28-591+52	" 24'
594+88-595+12	" 24'



17

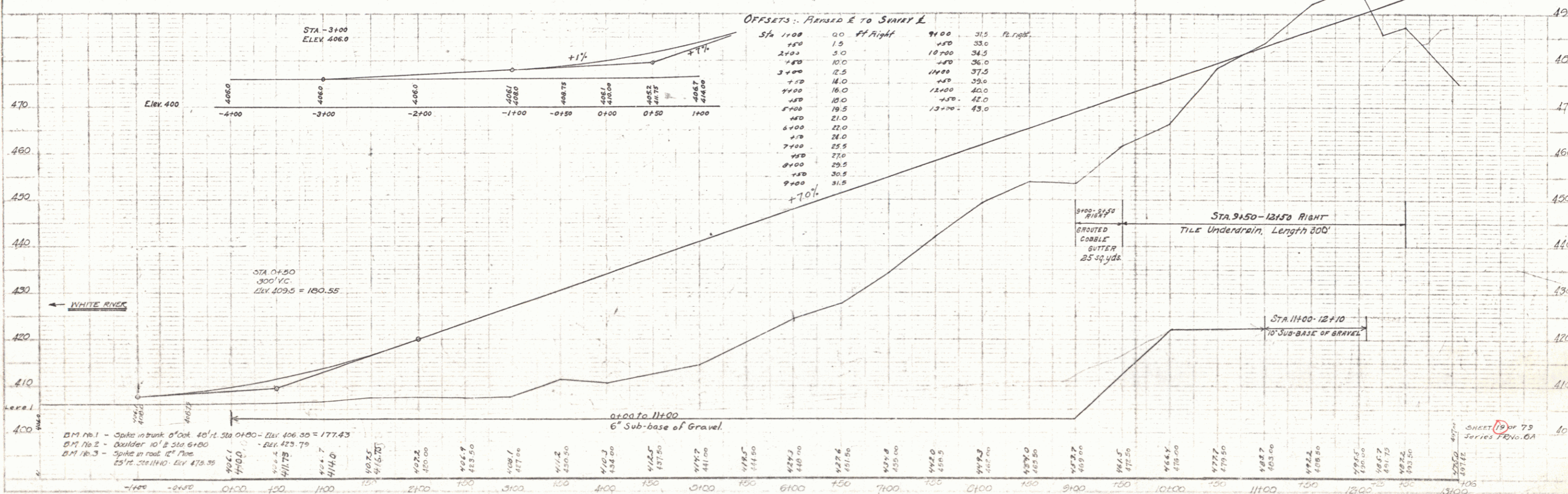
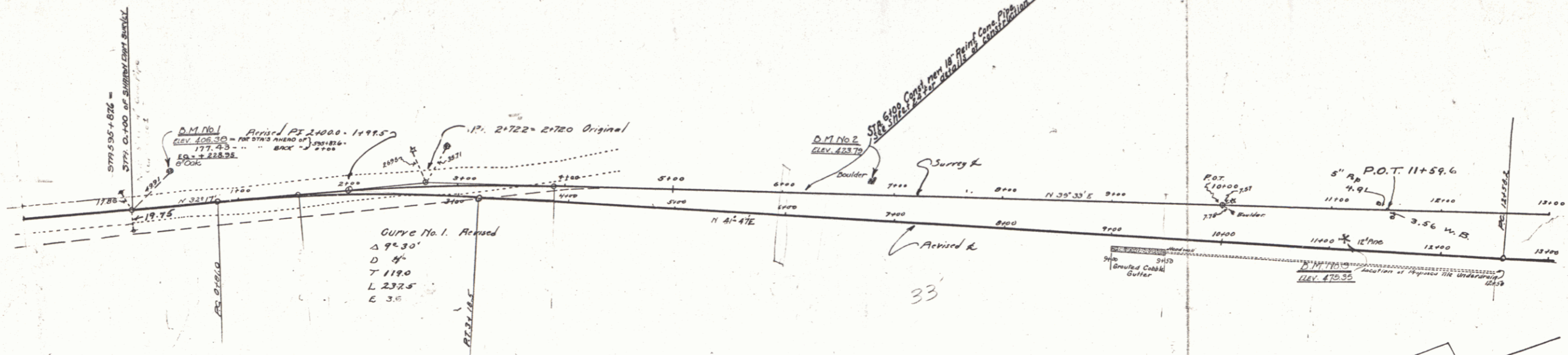
CABLE GUARD RAIL REQUIRED

DIRT LEFT
 STA 0+00 to STA 13+00 - length 1300 ft.

DIRT RIGHT
 STA 0+00 to STA 7+76 - length 776 ft.
 STA 12+40 to STA 13+00 - length 60 ft.
 TOTAL DIRT SHEET 2136 ft.

NEW CULVERTS REQUIRED
 STA 6+00 18" Reinf Concrete Pipe Length 96'
 Concrete Class A (1-2-4) 1.9 cu yds.
 Reinf Steel 54 lbs.

Headwall at outlet of file underdrain
 Concrete Class B (1-2-5) 0.9 cu yds.



BM No. 1 - Spike in bank of oak 40' N. Sta 0+00 - Elev 406.35 = 177.43
 BM No. 2 - Boulder 10' S 310 6+00 - Elev 423.79
 BM No. 3 - Spike in road 12' N. Sta 12+40 - Elev 478.35

SHEET 19 OF 73
 Series 1404.6A

18

NEW CULVERTS REQUIRED

STA 13+50 - 48" Rein. Conc. Pipe - 12.0 with
REINFORCING STEEL 33 lbs.
This culvert laid by State forces.
Headwalls to be constructed.

STA 22+50 - 18" Reinforced Concrete Pipe -
CONCRETE CLASS B (1-21-2) - 2.7 cu yds
REINFORCING STEEL - 33 lbs.
THIS CULVERT LAID BY STATE FORCES.

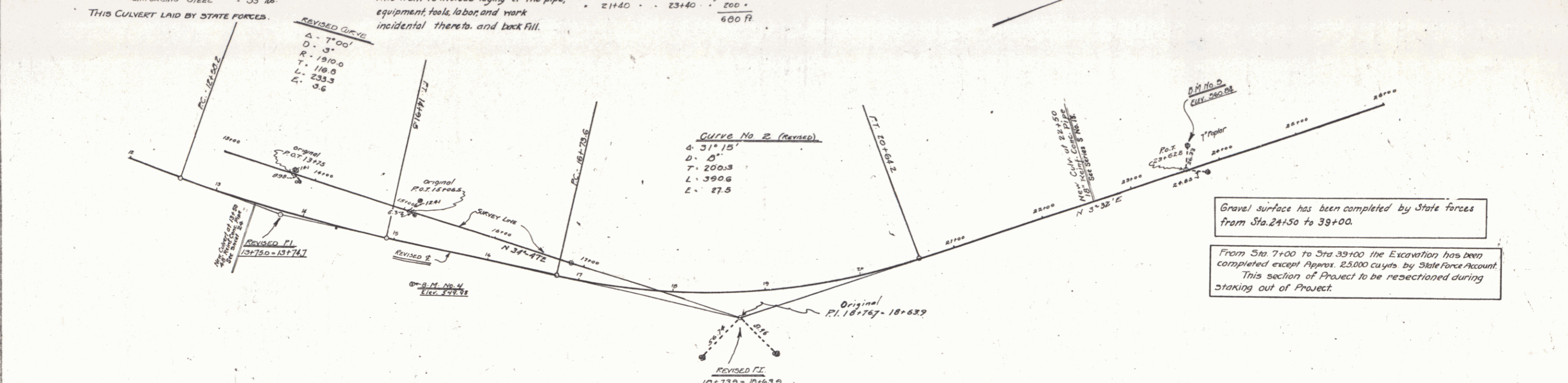
CABLE GUARD RAIL REQUIRED

CULVERT
STA 13+00 to STA 14+40 - Long 140 ft.
• 21+24 • • 23+40 • • 216 •

CULVERT
STA 13+00 to STA 14+24 - Long 124 ft.
• 21+40 • • 23+40 • • 200 •
600 ft.
This item to include laying of the pipe,
equipment, tools, labor, and mark
incidental thereto, and back fill.

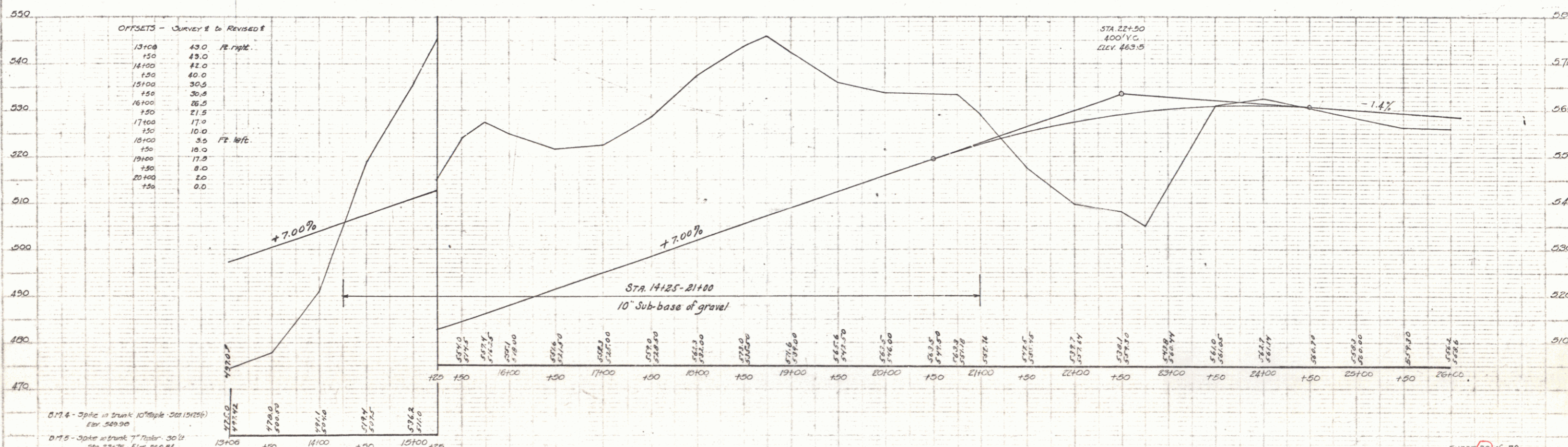
COBBLE GUTTER NOTE

STA 14+25 (approx) and STA 23+25 (approx) - Right and Left.
Cobble Gutter to be constructed on slope where
fill meets original ground if necessary to prevent
erosion.



Gravel surface has been completed by State forces
from Sta. 24+50 to 39+00.

From Sta 7+00 to Sta 39+00 the Excavation has been
completed except Approx. 25,000 cu yds. by State Force Account.
This section of Project to be resectioned during
staking out of Project.



D17.4 - 3" dia. x 3' long 10" dia. x 50" (1975)
Elev. 549.90

D17.5 - 3" dia. x 3' long 7" dia. x 30" (1975)
Elev. 548.06

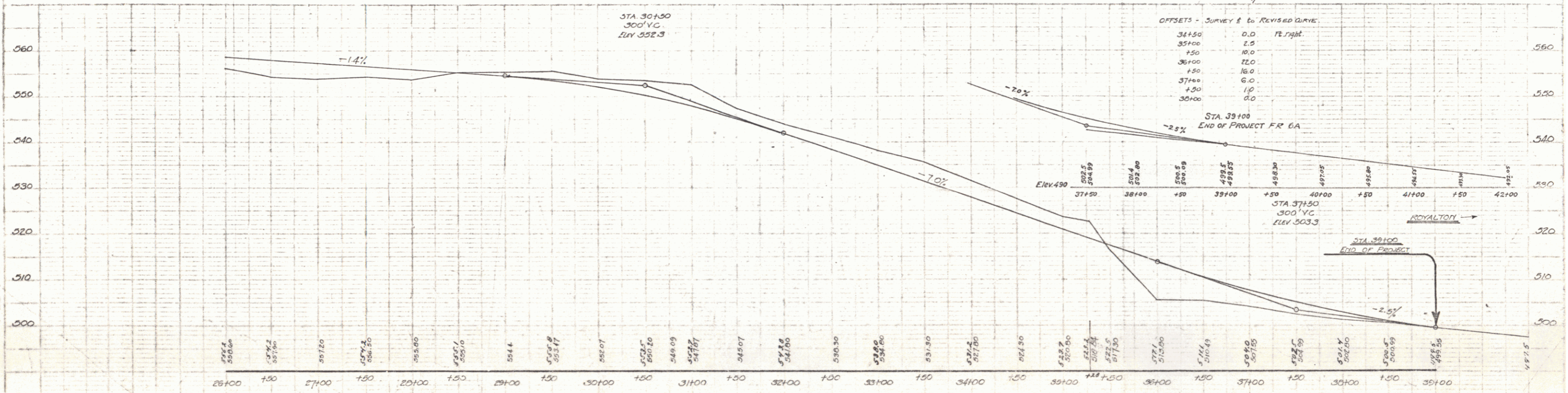
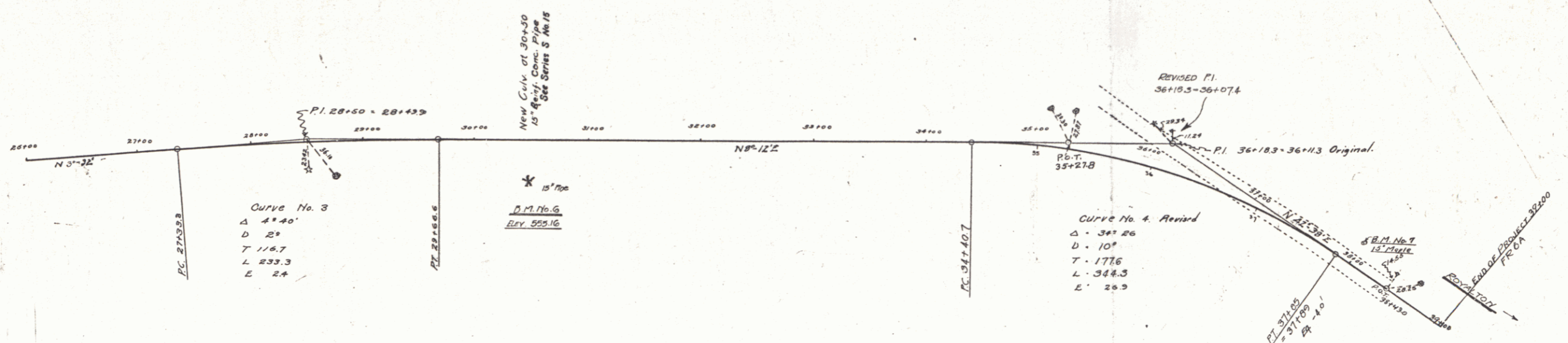
19

CABLE
GUARD RAIL REQUIRED
ON LEFT
 STA 35+66 to STA 37+26 - long 160 ft.

WOOD GUARD RAIL REQUIRED
ON LEFT
 STA 30+30 to STA 30+62 - 24'
 STA 30+30 to STA 30+62 - 24'
 STA 30+30 to STA 30+62 - 40'

NEW CULVERTS REQUIRED
 STA 30+50 - 15" REIN. CONC. PIPE
 CONC. CLASS B (1-1-1) - 2.1 cu yds
 REIN. STEEL - 33 lbs
 THIS CULVERT LAID BY STATE FORCES

FR 6A 1928 21 75



BM No. 6 - spike in 15" pipe at Sta 30+50 (2) Elev 552.16
 BM No. 7 - 15" spike at Sta 38+00 Elev 500.00

SHEET 2 OF 79
 Series FR No. 6A