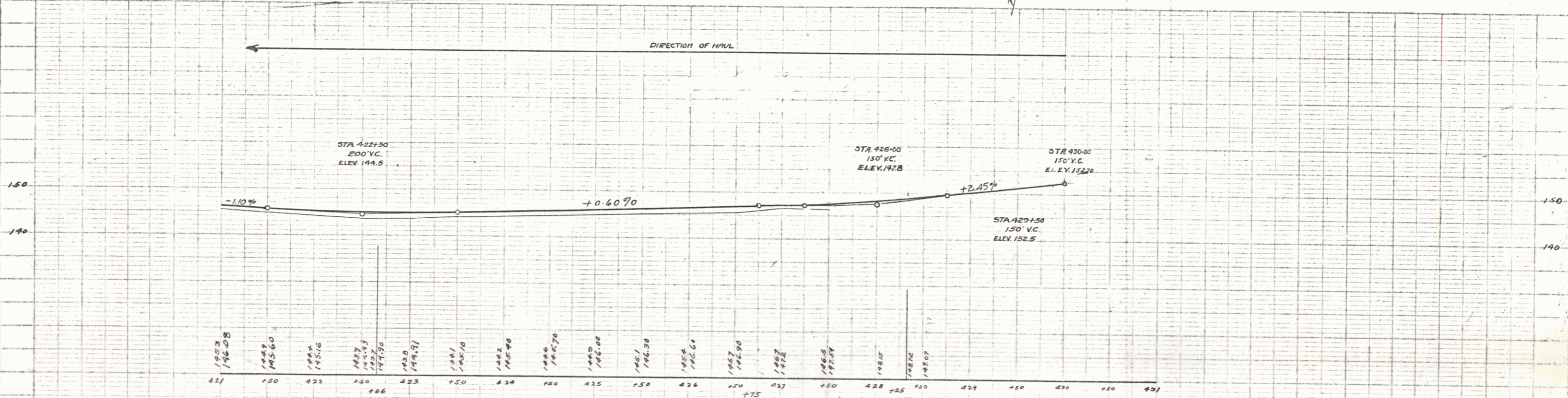
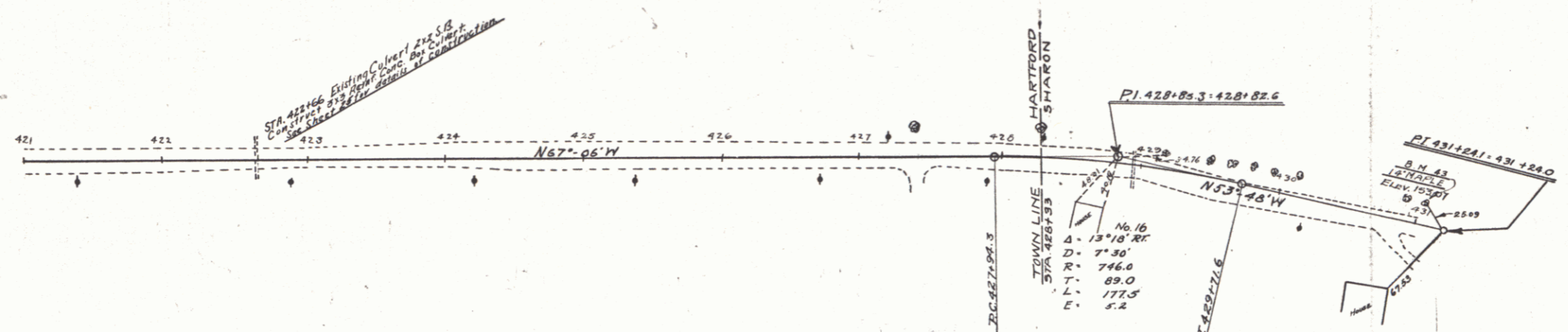


New Culverts Required  
 Sta. 422+66 3x3 Reinf. Conc. Box Culvert  
 Conc. Class A (1-2-4) 17.5 cu yds  
 Reinf. Steel 1142 lbs.

Wood Guard Rail  
 LEFT  
 422+54-422+78 Length 24'  
 RIGHT  
 422+54-422+78 24'

PROJECT	STATE	ROAD	SHEET	TOTAL
FR 6A	MD	1929	7	79

PLAN	REVISION
DATE	BY



B.M. 43 14" MAPLE LEFT STA. 431+03 ELEV. 153.07

SERIES FR No 6A  
 SHEET 7 OF 79