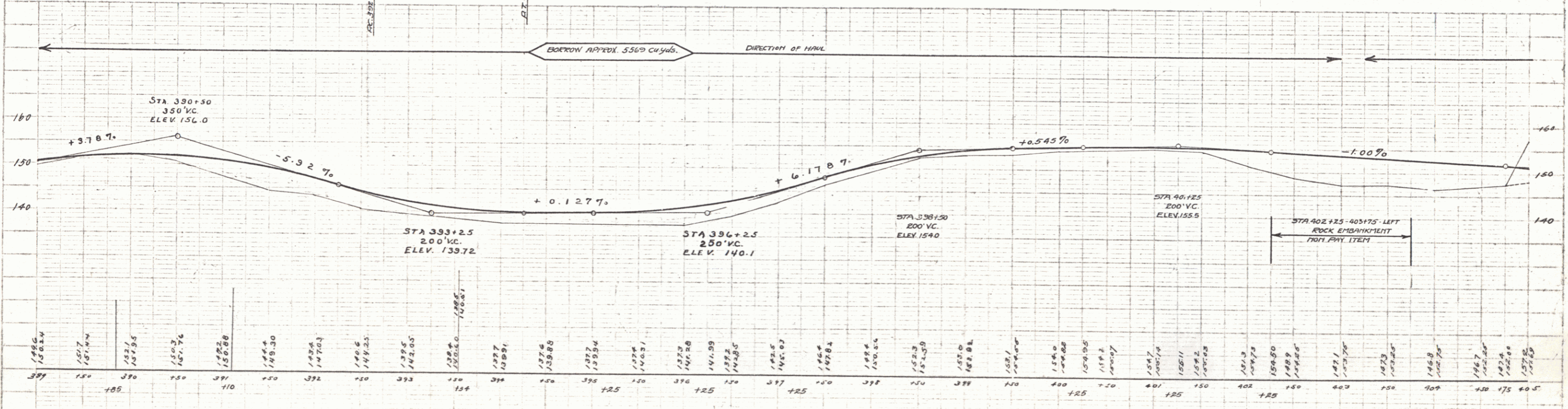
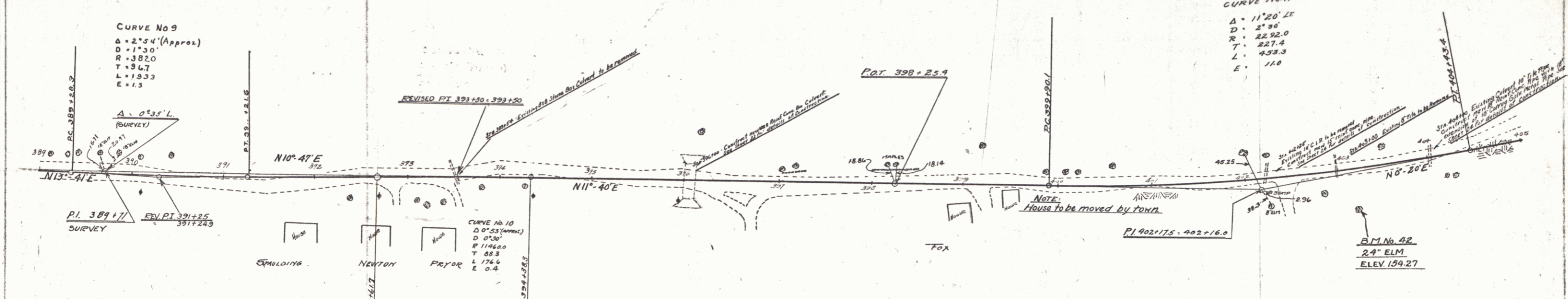


New Culverts Required
 STA 402+25 15' Round Conc Length 40'
 Conc. Class B (12x5) 26 cu yds
 Reinf. Steel 33 lbs.
 STA 404+00 10' Round Conc. Pipe Length 36'
 VE Curvy. Galv. Metal Pipe Length 18' (Extension)
 Conc. Class A (12x4) 10 cu yds.
 Reinf. Steel 27 lbs.

New Bridges Required
 STA 396+00 10x8 Firm Conc. Box
 Conc. Class A (12x4) 70.0 cu yds.
 Reinf. Steel 5630 lbs.
 Struct. Excav 150 cu yds.

Wood Guard Rail
 RIGHT
 395+00-396+12 Length 24'
 403+00-404+12 " 24'
 408+13-408+37 " 24'

Cable Guard Rail
 LEFT
 389+00-393+04 Length 444'
 395+10-405+00 " 990'
 RIGHT
 393+44-394+24 " 80'



B.M. No. 42 24" ELM RIGHT OF STA. 403+16 ELEV. 154.27

4