

NEW CULVERTS REQUIRED

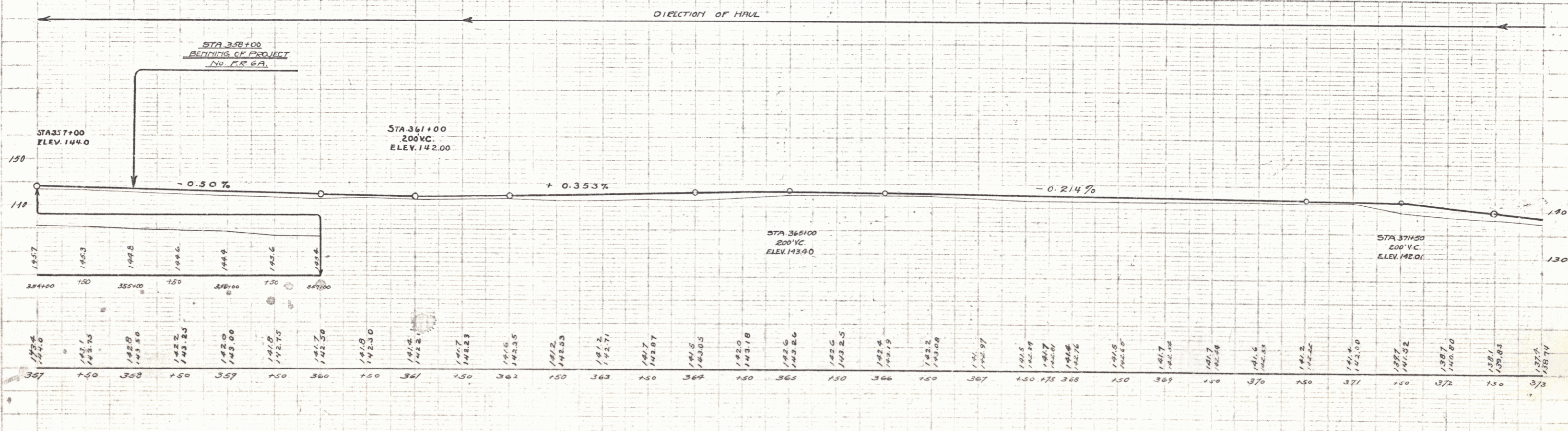
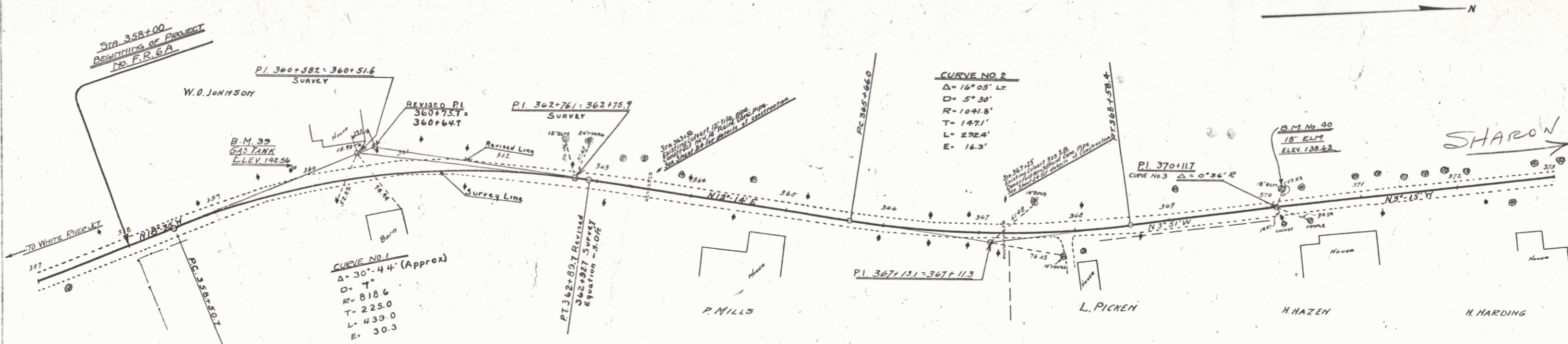
STA 363+50 18" Reinf. Concrete Pipe Length 36'
 Conc. Class A (1:2-4) 1.9 cu yds
 Reinf. Steel 54 lbs.

STA 367+25 30" Reinf. Concrete Pipe Length 40'
 Conc. Class A (1:2-4) 3.5 cu yds
 Reinf. Steel 50 lbs.

WOOD GUARD RAIL
 RIGHT
 363+38-365+62 Length 24'
 367+13-367+37 24'

CABLE GUARD RAIL
 LEFT
 363+38-372+38 Length 920'

REC. ROAD STATE ILLINOIS LEGAL SHEET 1928
 D. 3 79
 SERIES FR. E. A



B.M. No. 39 GAS PUMP LEFT OF STA 359+87 ELEV. 142.56
 B.M. No. 40 18" ELM LEFT OF STA 370+20 ELEV. 136.63

SERIES FR. E. A
 SHEET 3 OF 79