

INDEX OF SHEETS

SHEET NO. 1	TITLE PAGE
2	TYPICAL CROSS-SECTION OF IMPROVEMENT (GRADING BASE DRAINAGE WITH GUARD RAIL AND DOUBLE TACK COAT OF REFINED TAR (ITEM 29))
3	BANKING AND WIDENING TABLES
4-8	PLAN AND PROFILE STA. 249+50 - 307+54.8
9	DETAIL SHEET 10' X 10' REINF. CONC. BOX CULVERT STA. 277+94
10	STANDARD SHEET S-28 PIPE CULVERTS
11	STANDARD SHEET S-30 GUARD RAIL
12	STANDARD SHEET S-30-A F. A. MARKERS
13	STANDARD SHEET S-40 BARRICADES, SIGNS & LIGHTS
14	STANDARD SHEET S-41 ROUNDING OF SLOPES
15-32	CROSS SECTIONS ROADWAY STA. 249+50 - 307+54.8
33-34	CROSS SECTIONS CHANNEL STA. 277+94

STANDARD STRUCTURE SHEETS
 APPROVED BY THE CHIEF ENGINEER
 S-28 JULY 11, 1933
 S-30 AUG. 15, 1934

STATE OF VERMONT
 STATE HIGHWAY DEPARTMENT

PLAN AND PROFILE OF PROPOSED
 STATE HIGHWAY
 FEDERAL AID PROJECT FAP 91D-(1)

TOWN OF HARTFORD Pin# 00R 731

WHITE RIVER JUNCTION - SHARON ROAD Rk. VT 14

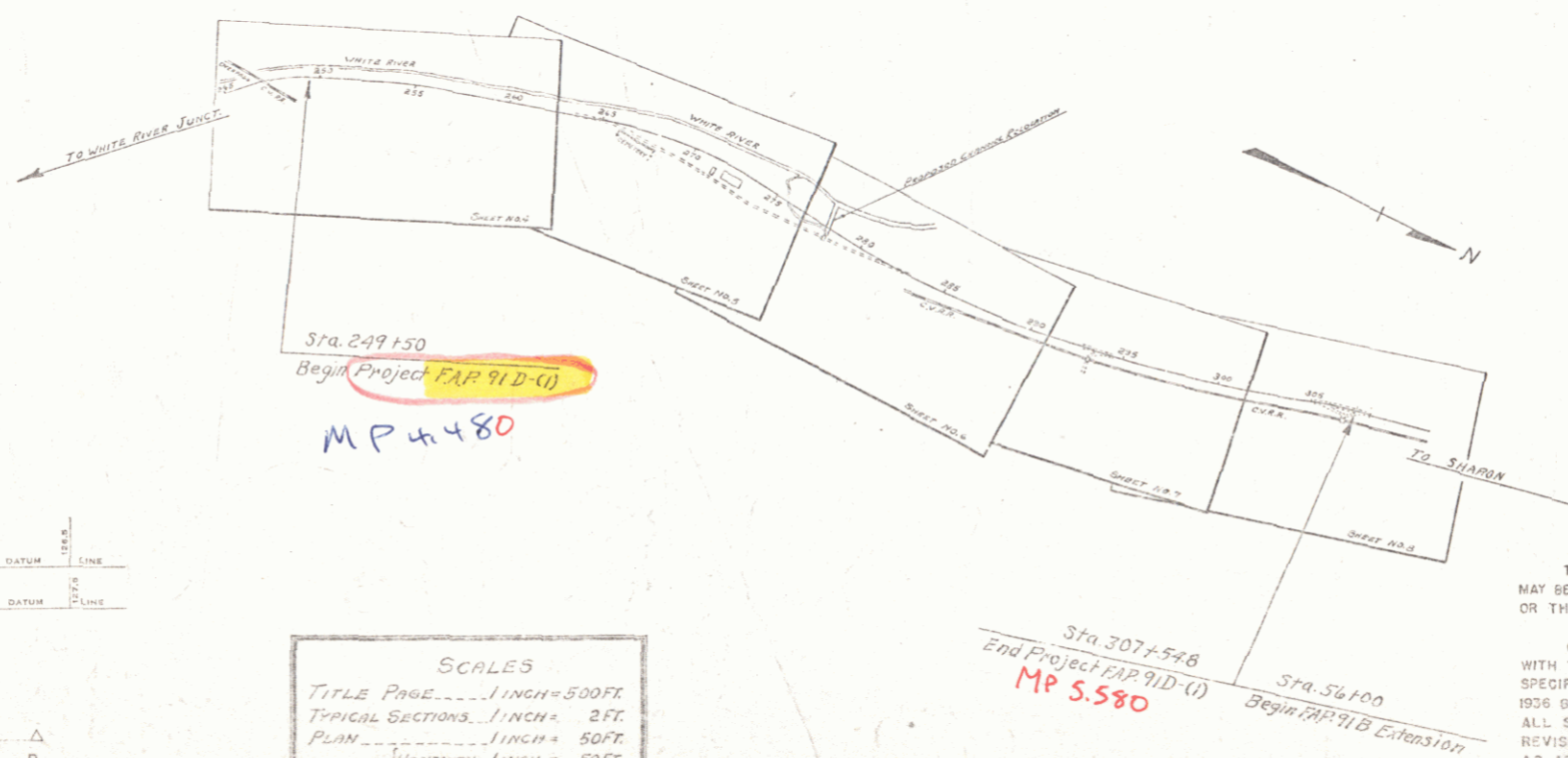
BEGINNING AT A POINT 2.4 MILES SOUTH OF WEST HARTFORD VILLAGE AND EXTENDING NORTHWEST-ERLY 1.098 MILES.

LENGTH OF PROJECT 5,800.2 FT. = 1.098 MILES

FED. ROAD DIST. NO.	STATE	FED. AID PROJ. NO.	FISCAL YEAR	SHEET NO.	TOTAL SHEETS
9	Vt.	91D-(1)	1941	7	34



RECORD PLANS
 W. H. Chase



APPROVED: June 13, 1940
 Commissioner of Highways
 SUBMITTED BY ORDER OF THE STATE HIGHWAY BOARD

CONVENTION SIGNS

GROUND ELEVATION DATUM LINE
 GRADE ELEVATION DATUM LINE

CURVE DATA
 DEFLECTION ANGLE Δ
 DEGREE OF CURVE D
 RADIUS OF CURVE R
 TANGENT DISTANCE T
 LENGTH OF CURVE L
 EXTERNAL DISTANCE E
 POINT OF INTERSECTION P. I.
 POINT OF CURVE P. C.
 POINT OF TANGENT P. T.
 POINT ON TANGENT P. O. T.

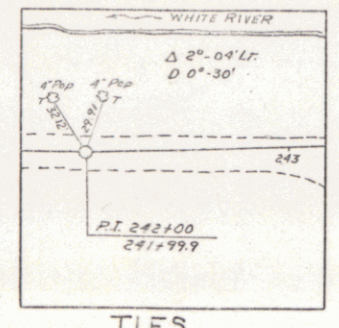
SCALES
 TITLE PAGE 1 INCH = 500 FT.
 TYPICAL SECTIONS 1 INCH = 2 FT.
 PLAN 1 INCH = 50 FT.
 PROFILE (Horizontal) 1 INCH = 50 FT.
 PROFILE (Vertical) 1 INCH = 10 FT.
 CROSS SECTIONS 1 INCH = 5 FT.

THESE PLANS ARE SUBJECT TO SUCH REVISIONS AS MAY BE REQUIRED BY THE PUBLIC ROADS ADMINISTRATION OR THE COMMISSIONER OF HIGHWAYS.
 CONSTRUCTION IS TO BE CARRIED ON IN ACCORDANCE WITH THE PLANS AND THE STANDARD ROAD AND BRIDGE SPECIFICATIONS OF 1936, AS APPROVED DECEMBER 29TH, 1936 BY THE PUBLIC ROADS ADMINISTRATION, INCLUDING ALL SUBSEQUENT APPROVED REVISIONS AND SUCH REVISED SPECIFICATIONS AND SPECIAL PROVISIONS AS ARE SUBMITTED WITH THE PLANS.

RECOMMENDED FOR APPROVAL

APPROVED

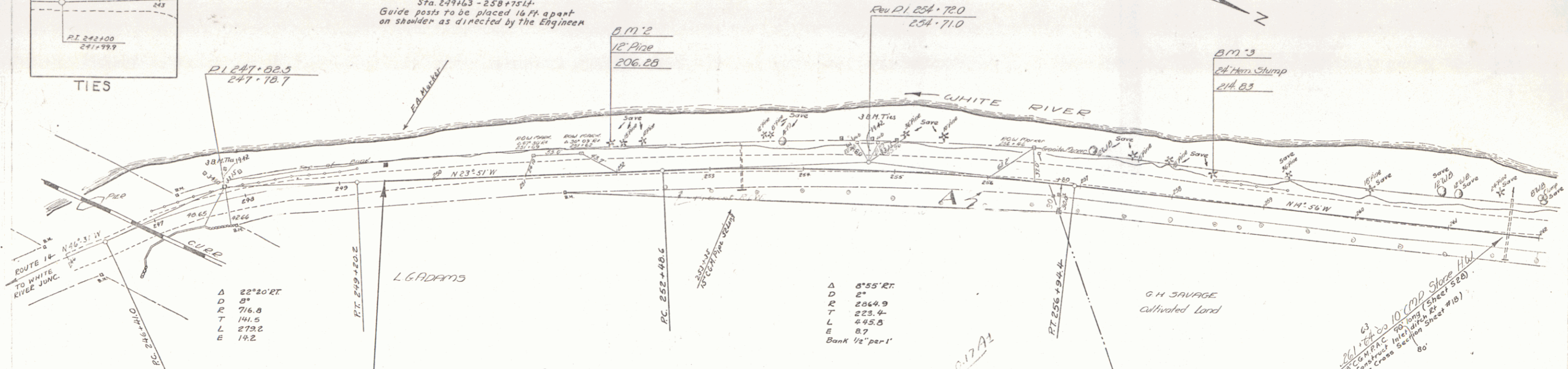
APPROVED: June 13, 1940
 HEAD ENGINEER
 DISTRICT HIGHWAY COMMISSIONER
 SERIES FAP No. 91D(1) FILED
 SHEET 7 OF 34



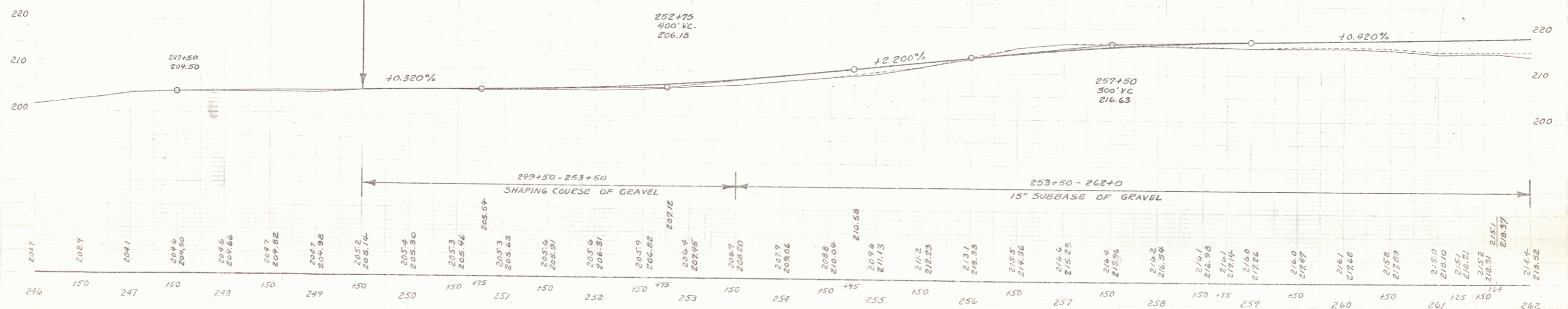
Sta 250+50 - 252+50
 Existing road surface to be scarified before placing shaping course of gravel. This work is to be included in the bid price for Common excavation (Item 10-1)

Sta 249+63 - 258+75+4
 Guide posts to be placed 16ft apart on shoulder as directed by the Engineer

EXISTING GUARD RAIL AND GUIDE POSTS
 Any existing guard rail or guide posts that may be found down are to become the property of the State. The cable shall be reeled and stored and the posts and planking piled in such locations as may be determined by the Engineer.



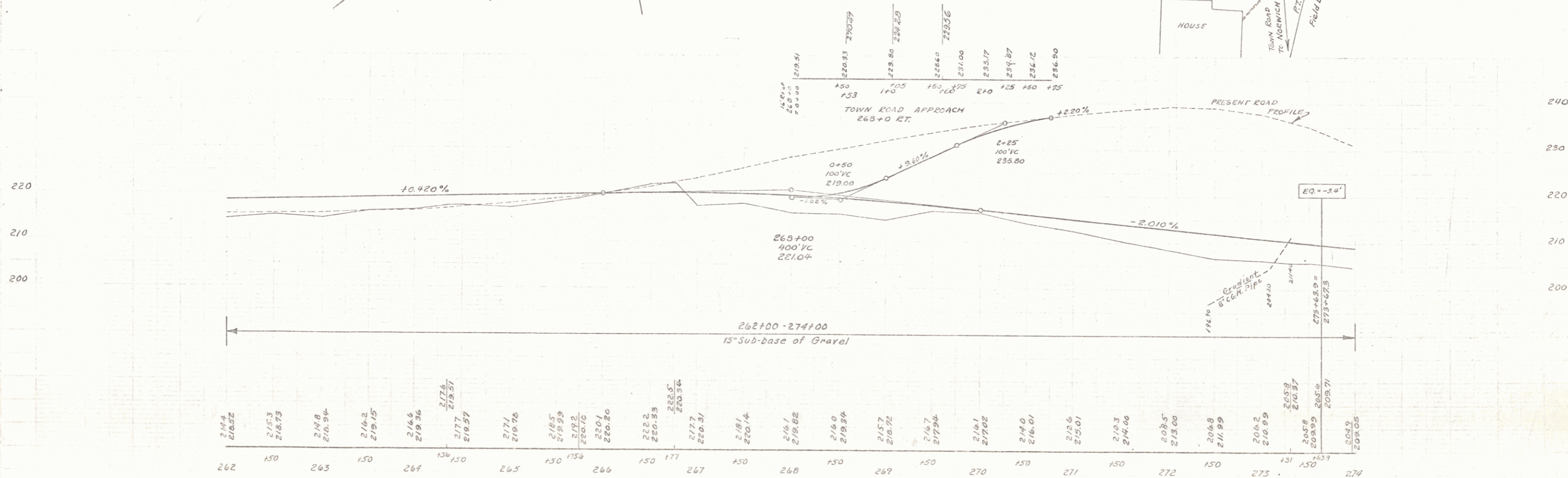
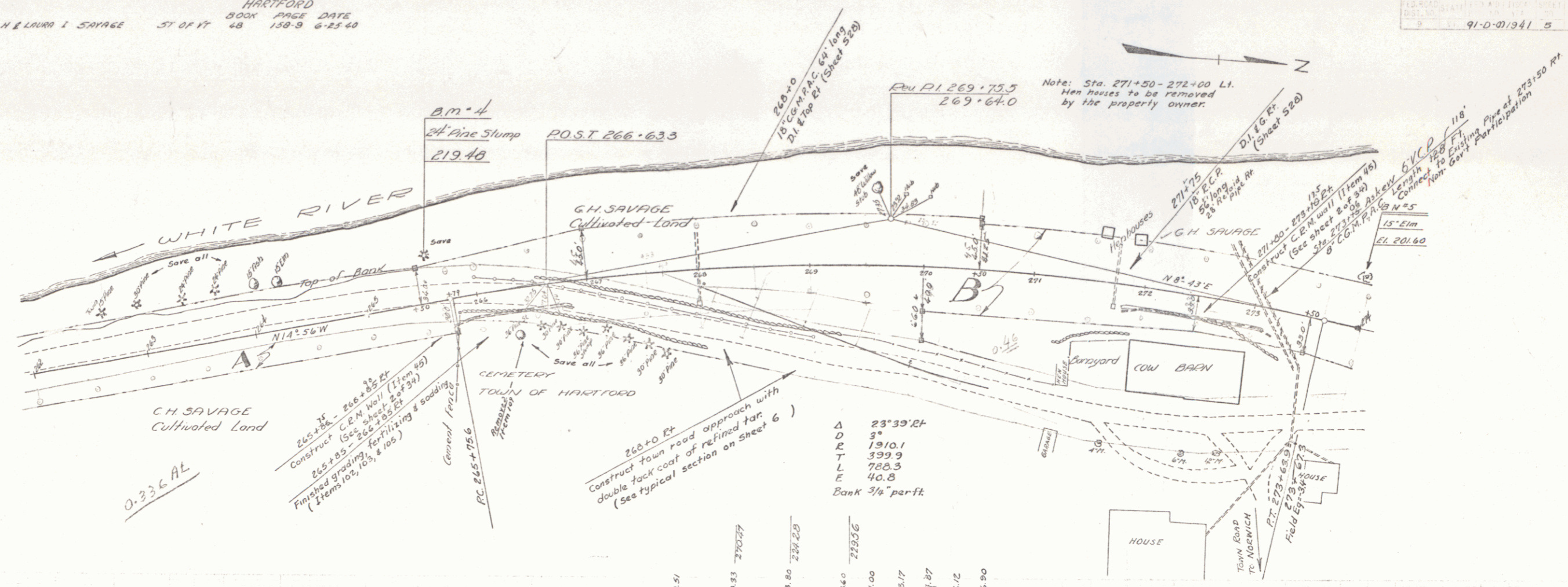
PARCEL	INSTRUMENT	DATE	GRANTOR	GRANTEE	RECORDED	REMARKS
Sta. 249+50	Begin Project FAR 91D-(1)	A	W.D.O.E.	6-8-40	LENNY G. ADAMS	ST OF CT



B.M. No 2 Spike in root of 12" Pines 33ft left of Sta 251+95 Elevation 206.28
 B.M. No 3 Spike in 24" Horn Stump, 30ft left of Sta 258+41 Elevation 214.83

PARCEL INSTRUMENT DATE GRANTOR GRANTEE RECORDED REMARKS
 R-B W.D. DE 6-8-40 GEO H & LAURA I SAVAGE ST OF RT 48 158-9 6-23-40
 HARTFORD
 BOOK PAGE DATE
 48 158-9 6-23-40

91-D-01341 5 34



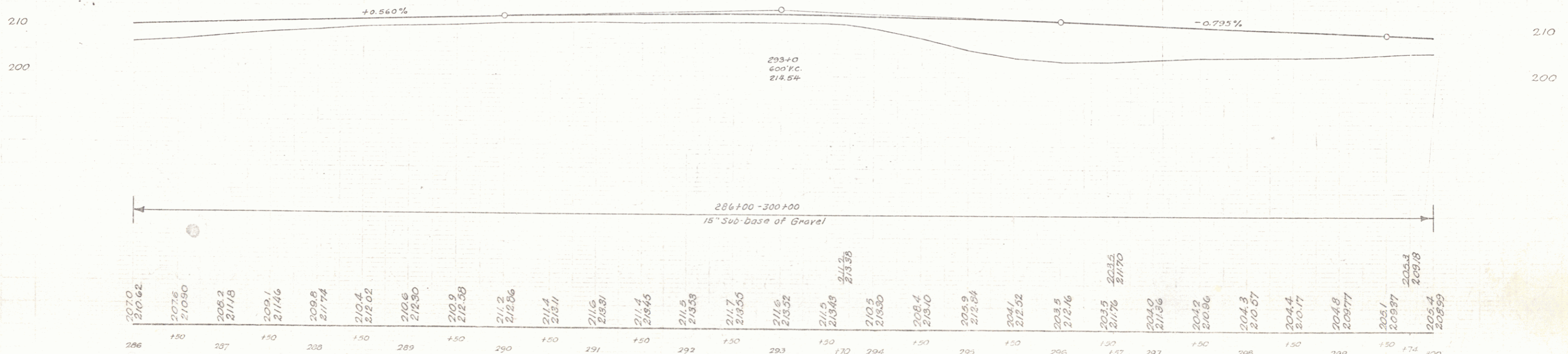
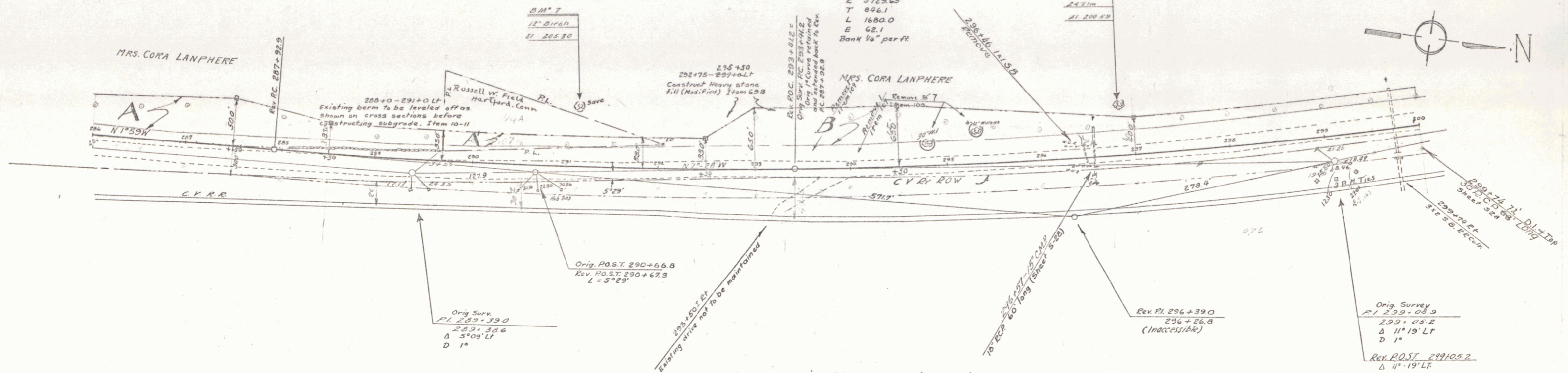
B.M. No 4 Spike in root of 30' Pine 43ft left of Sta. 265+59. Elevation 219.48
 B.M. No 5 Spike in root of 15' Elm 43ft left of Sta. 273+93 Elevation 201.60

HARTFORD
 SERIES (P.P. NO. 91-D-01)
 SHEET 5 OF 34

PARCEL	INSTRUMENT	DATE	GRANTOR	GRANTEE	RECORDED	REMARKS
A-B	W.D.O.E.	6-8-60	CORA LANPHERE	ST. OF W.	BOOK PAGE DATE	
A	W.D.O.E.	6-12-60	RUSSELL FIELD	ST. OF W.	43 137 6-25-60	1 CUB
					43 161.2 6-25-60	

Rev Curve
 Δ 16° 48' L
 D 1"
 E 5723.65
 T 896.1
 L 1680.0
 E 62.1
 Bank 1/2" per ft

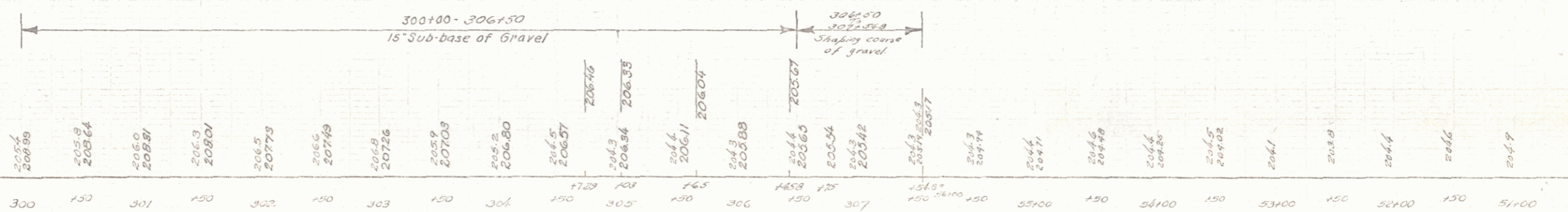
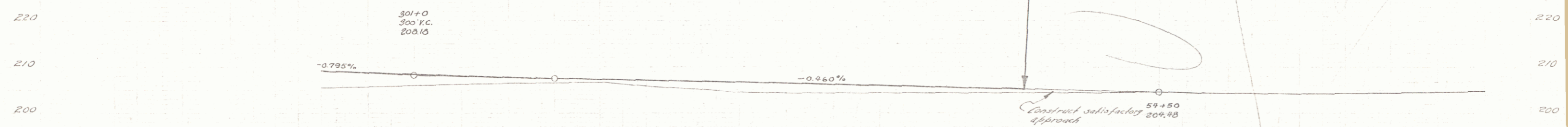
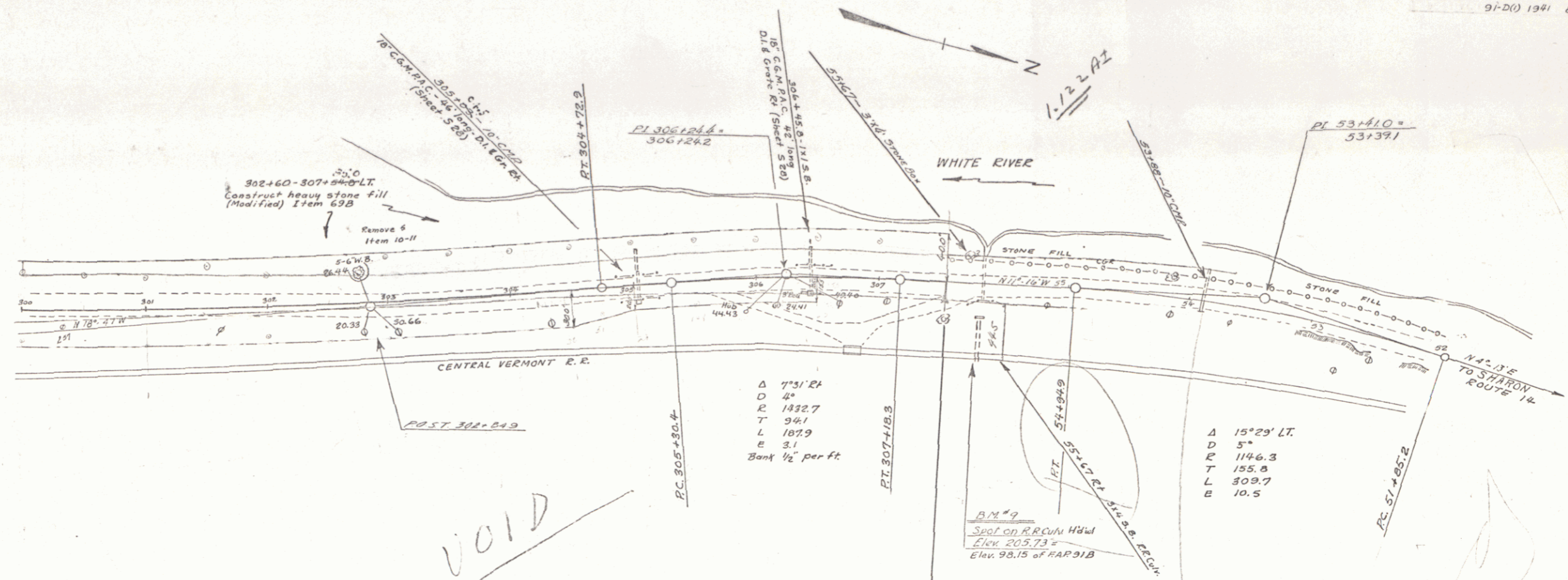
91D(1) 1941 7 39



B.M. No 7. Spike in root of 12" White Birch, 67 ft left of Sta 291+10. Elevation: 203.30
 B.M. No 8. Spike in root of 24" Elm, 50 ft left of Sta 296+83. Elevation: 200.59.

HARTFORD
 Survey Co., P. No. 91D-(1)
 Sheet 7 of 5+ Sheets.

5



B.M. #9 Spot on R.R. Culvert Hendonville 29' N of Sta. 55+00 FAR 91B Elev. 205.73

HARTFORD
SERIES MAP No. 91D (1)
Sheet 8 of 34 sheets

