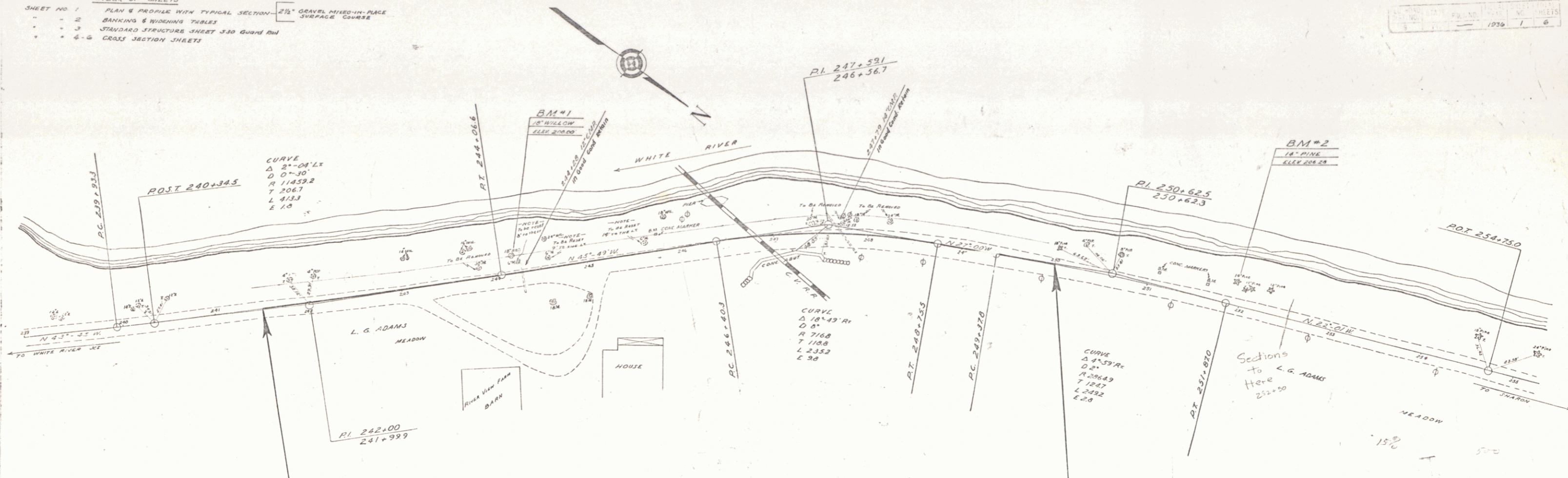


INDEX OF SHEETS

SHEET NO. 1	PLAN & PROFILE WITH TYPICAL SECTION	21" GRAVEL MIXED-IN-PLACE SURFACE COURSE
2	BANKING & WIDENING TABLES	
3	STANDARD STRUCTURE SHEET 330 Guard Rail	
4-6	CROSS SECTION SHEETS	



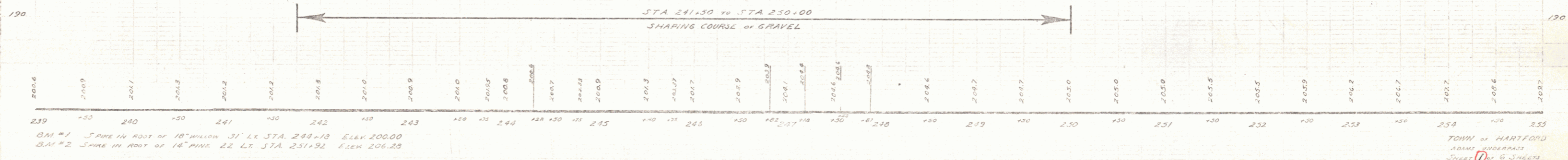
ESTIMATED QUANTITIES

ITEM No.	ITEM	UNIT	QUANTITY
11.11	Common Excavation incl. Borrow	CY	2.53
12.0	Sub-base of Gravel	CY	2.0
24.0	Gravel Mixed-in-Place Surface Course	CY	1.8
24.4	Refined Top	sq yds	96.0
66	Wood Guard Rail	lin ft	352

NOTE:
Road to be widened on R.H. 0.5 Sections on 75% Sections with the grade remaining the same as present road.

RIGHT-OF-WAY DIVISION
TOWN FILE
PERPETUAL
Rte. VT 14
(To Be Returned To R.O.W. Division)

Town: Hartford
Project: Adam's Underpass
Date: 1/1/36
Rte: VT 14
Pin #: 00R 730
Project No: mm 4.21 to 4.48



BM #1 3" PINE IN ROOT OF 18" MILLON 31' LT. STA. 244+70 ELEV. 200.00
 BM #2 3" PINE IN ROOT OF 14" PINE 22' LT. STA. 251+92 ELEV. 206.25

TOWN OF HARTFORD
 ADAM'S UNDERPASS
 SHEET 1 OF 6 SHEETS