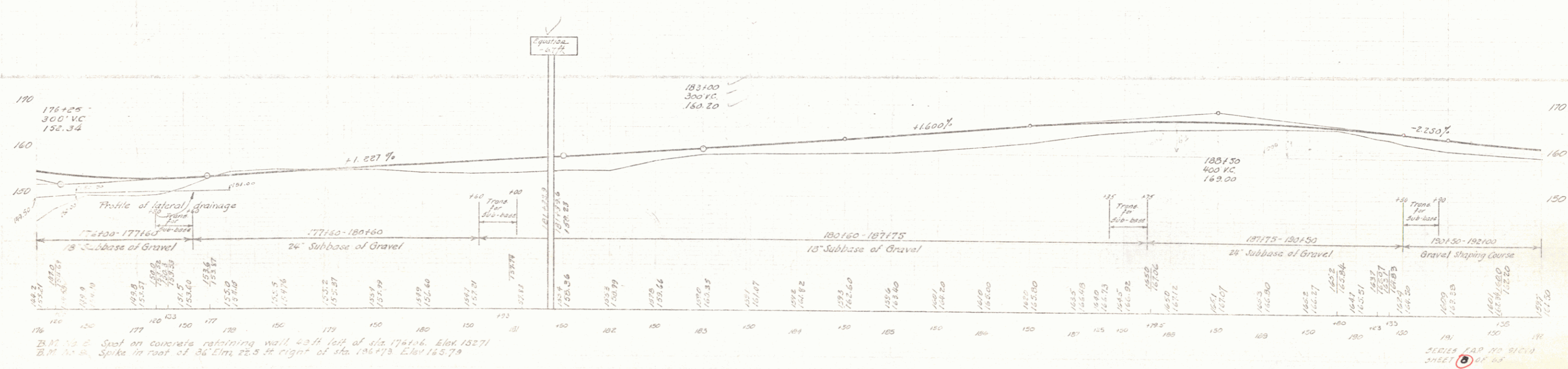
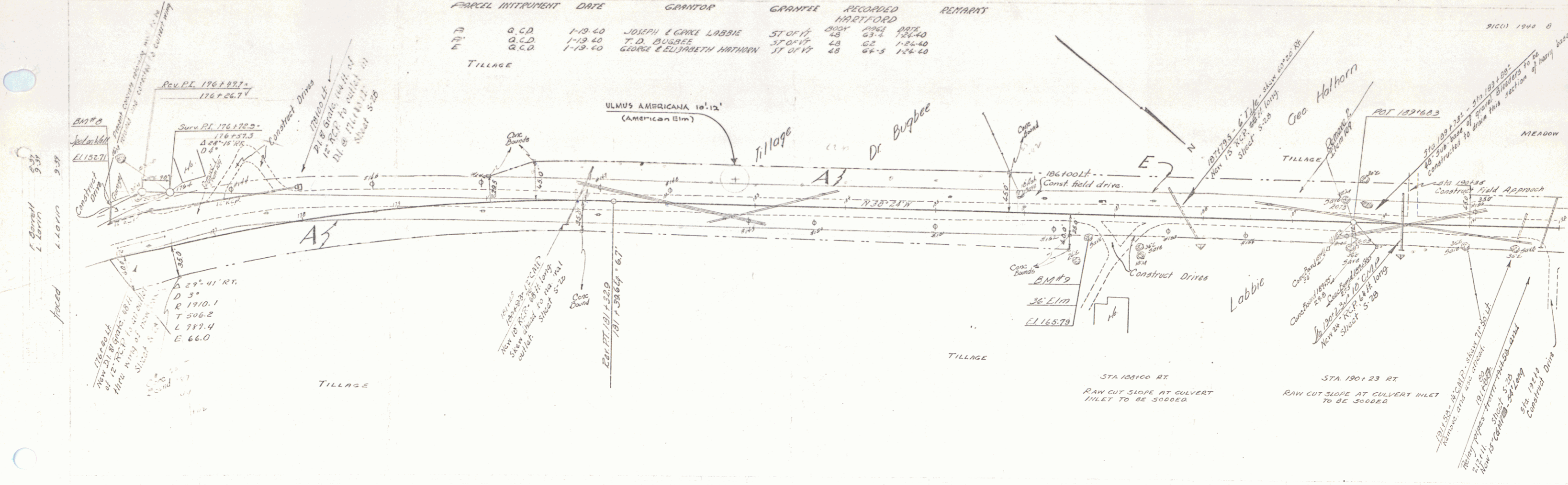


PARCEL INTERMENT	DATE	GRANTOR	GRANTEE	RECORDED	REMARKS
A	Q.C.D.	1-19-40	JOSEPH & CORSE LABBIE	ST OF 4	BOOK PAGE DATE
B	Q.C.D.	1-19-40	T.D. BUSBEE	ST OF 4	48 63-4 194-40
E	Q.C.D.	1-19-40	GEORGE & ELIZABETH HATHORN	ST OF 4	48 62 194-40
					48 64-5 194-40



B.M. No. 2. Spot on concrete retaining wall 40 ft left of sta. 176+00. Elev. 152.71  
 B.M. No. 3. Spike in root of 36' Elm, 22.5 ft right of sta. 196+73. Elev. 145.79

SERIES 140 10 11000  
 SHEET 6 OF 10