

- INDEX OF SHEETS**
- 1 TITLE SHEET
 - 2 QUANTITY AND DRAINAGE SHEET
 - 3 EARTHWORK SHEET
 - 4-5 PLAN AND PROFILE SHEETS
 - 6 B-1 BANKING TABLES
 - 7 E-1 BARRICADES, SIGNS AND LIGHTS
 - 8 G-3 THREE CABLE GUARD RAIL WITH STEEL POSTS, AND ANCHORS
 - 9 G-4 STEEL MARKER POSTS
 - 10 J-1 ERECTION OF PROJECT MARKERS, BOUNDARY MARKERS
 - 11 E-3I CONSTRUCTION IDENTIFICATION SIGNS
 - 12-26 CROSS SECTIONS
 - 26 A BORROW PIT SECTIONS

**STATE OF VERMONT
DEPARTMENT OF HIGHWAYS**

PROPOSED IMPROVEMENT

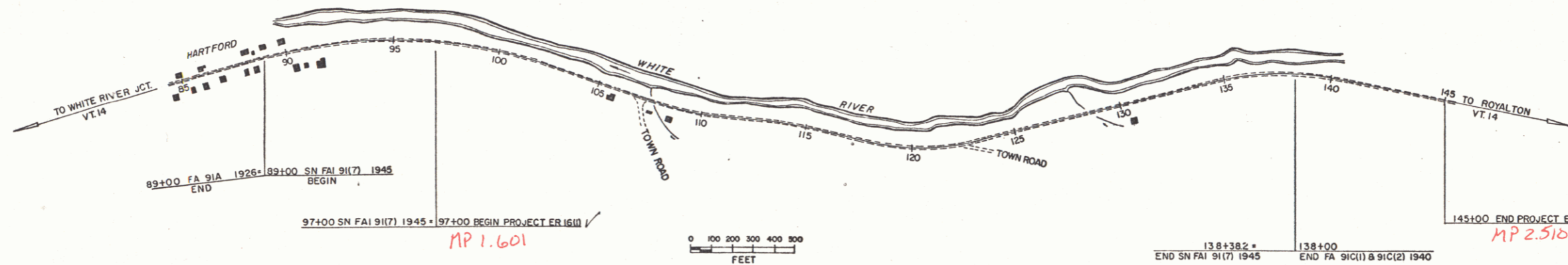
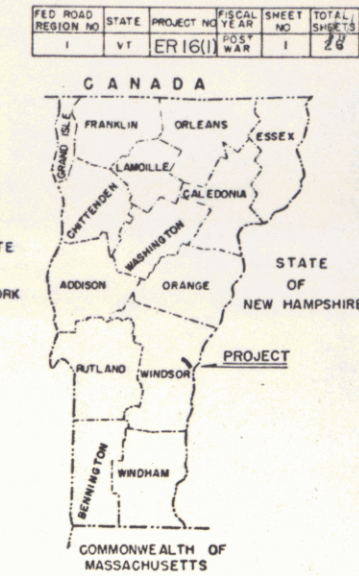
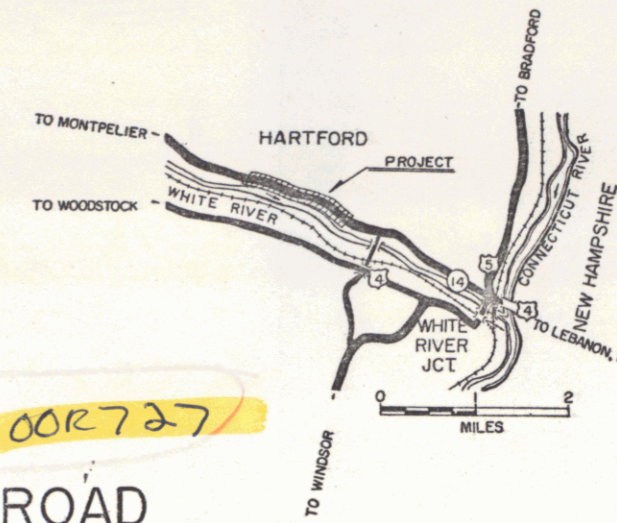
EMERGENCY RELIEF PROJECT

TOWN OF HARTFORD
STATE HIGHWAY ROUTE 14 Pin# 00R727
WHITE RIVER JUNCTION - MONTPELIER ROAD

PROJECT NAME & NUMBER HARTFORD ER 16(1)		TYPE STONE FILL & GUARD RAIL
RECORD PLANS		
MATERIALS		
SUBBASE OF GRAVEL & GRAVEL SHOULDERS — TWIN STATE SAND & GRAVEL CO., INC. — W. LEBANON, N.H.		
ASPH. CTD. CORR. GALV. METAL PIPE — NEW ENGLAND METAL CULVERT CO. — WHITE RIVER JUNCTION, VT.		
STONE FILL — OAKES QUARRY, WEST HARTFORD, VT. & TWIN STATE SAND & GRAVEL CO., INC. — W. LEBANON, N.H.		
GUARD RAIL — S. T. GRISWOLD & CO., INC. — ESSEX JUNCTION, VT.		
CONTRACTOR — EARLE & MERRY, INC. RUTLAND, VT.		CONTRACT : DATED — SEPTEMBER 10, 1964.
CHIEF RES. ENG. — R. NICHOLSON.		STARTED — SEPTEMBER 30, 1964.
RESIDENT ENGINEER — M. REDMOND.		COMPLETED — DECEMBER 1, 1964.
RECORD PLANS — M. REDMOND.		ACCEPTED — DECEMBER 1, 1964.

BEGINNING 1.651 MILES NORTHWESTERLY OF INTERSECTION OF ROUTES U.S. 5 AND VT 14 AND EXTENDING NORTHWESTERLY 0.909 MILES.
LENGTH OF PROJECT 4800 FEET = 0.909 MILES. ✓

1964 ADT	2650
EST 1985 ADT	1500
DHV (1985)	240
D	60%
T	6%
V	50



CONVENTIONAL SIGNS

- COUNTY LINE
- TOWN LINE
- FENCE LINE
- STONE WALL
- UNFENCED PROPERTY
- GUARD RAIL
- TRAVELED WAY
- RAILROAD
- RETAINING WALL
- CENTER LINE
- SURVEY LINE
- CULVERT
- DROP INLET
- TROLLEY POLE
- POWER POLE
- TELEPHONE POLE
- TREES
- MEDE

CONTRACTOR — EARLE & MERRY, INC.
 RUTLAND, VT.
 CONST. COMPLETED — DECEMBER 1, 1964.
 RECORD PLANS — M. REDMOND

PROJECT	HARTFORD
NUMBER	ER 16 (1)
TYPE	STONE FILL & GUARD RAIL
CONTRACTOR	EARLE & MERRY, INC.
	RUTLAND, VT.
YEAR IN 64.	1964
LOCATION	Beginning 1.651 miles northwesterly of the intersection of Routes U.S. 5 & Vt. 14 and extending northwesterly 0.909 miles.
DATE	7/20/64

3377

APPROVED *[Signature]*
DATE 7/20/64

APPROVED *[Signature]*
DATE 7/20/64

APPROVED *[Signature]*
DATE 7/17/64

APPROVED *[Signature]*
DATE 7/17/64

APPROVED *[Signature]*
DATE 7/17/64

APPROVED *[Signature]*
DATE 7/17/64

APPROVED *[Signature]*
DATE 7/17/64

DEPARTMENT OF COMMERCE
BUREAU OF PUBLIC ROADS

APPROVED _____ DATE _____

DIVISION ENGINEER

PROJECT ER NO. 16(1)

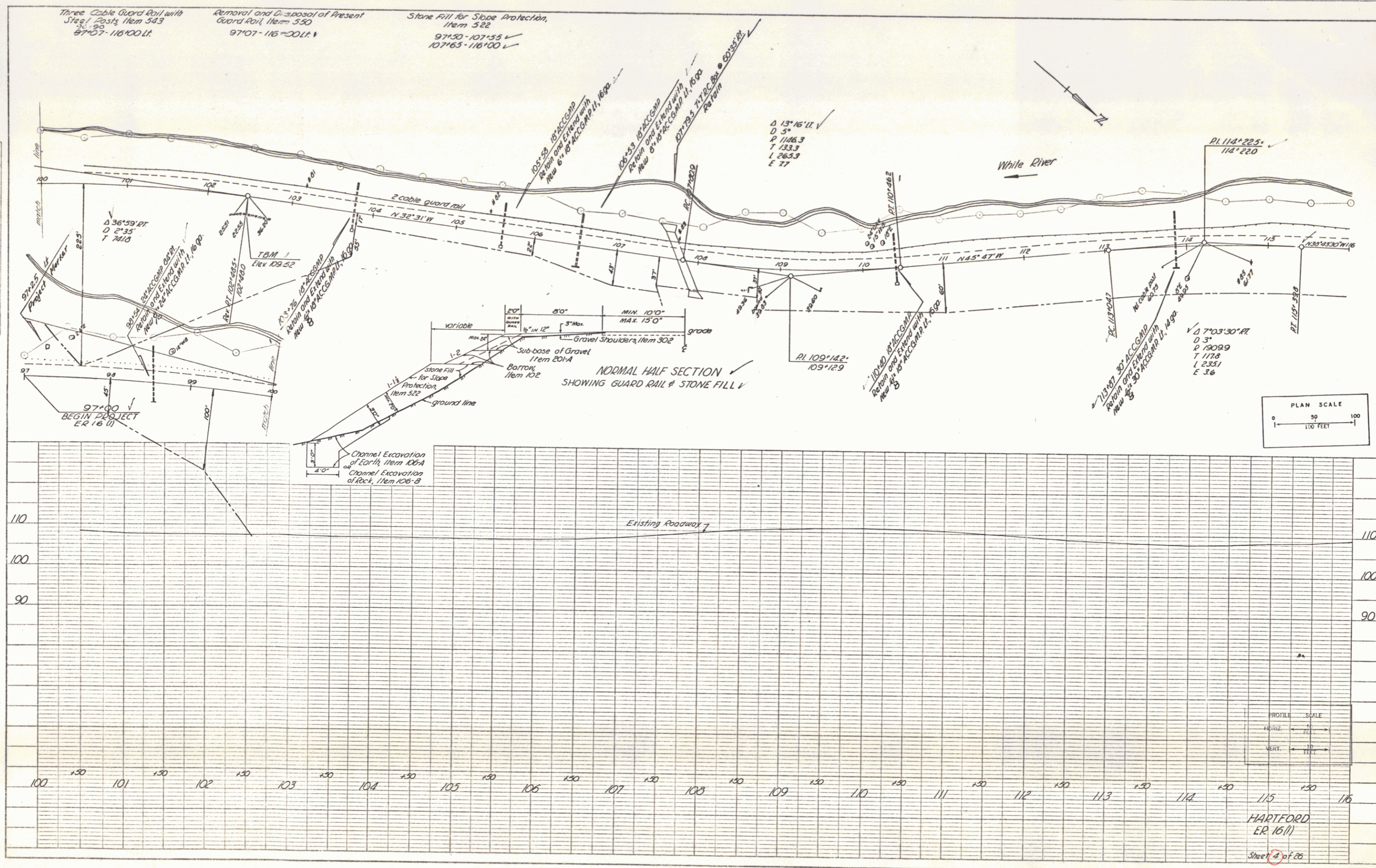
SHEET (1) OF 26 SHEETS

RIGHT-OF-WAY DIVISION
 TOWN FILE
 PERPETUAL
 Town of UT 14
 (To Be Returned TO R.O.W. Division)

THESE PLANS ARE SUBJECT TO SUCH REVISIONS AS MAY BE REQUIRED BY THE BUREAU OF PUBLIC ROADS OR THE COMMISSIONER OF HIGHWAYS.
CONSTRUCTION IS TO BE CARRIED ON IN ACCORDANCE WITH THE PLANS AND THE STANDARD SPECIFICATIONS FOR HIGHWAY AND BRIDGE CONSTRUCTION OF JANUARY 1956 SUBMITTED TO THE BUREAU OF PUBLIC ROADS AS APPROVED JULY 5, 1956, INCLUDING ALL SUBSEQUENT APPROVED REVISIONS AND SUCH REVISED SPECIFICATIONS AND SPECIAL PROVISIONS AS ARE SUBMITTED WITH THE PLANS.

PLAN
 DATE: 1/21/20
 DRAWN BY: J. J. [unclear]
 CHECKED BY: [unclear]
 NO. 244

PROFILE
 DATE: 1/21/20
 DRAWN BY: J. J. [unclear]
 CHECKED BY: [unclear]
 NO. 244



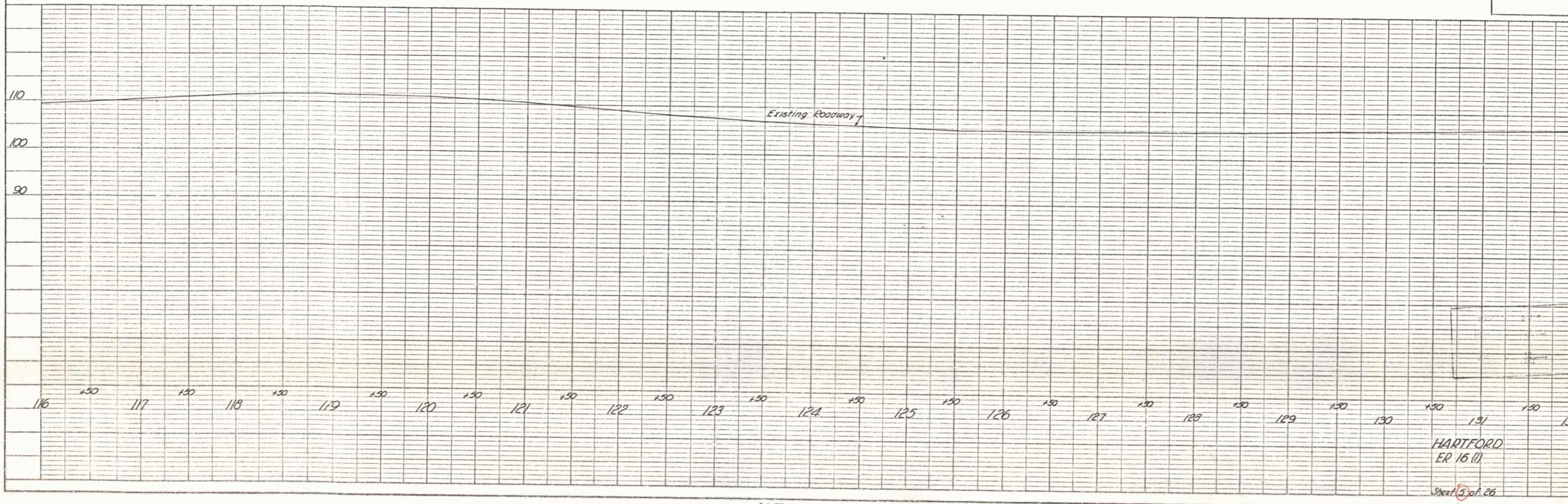
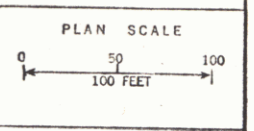
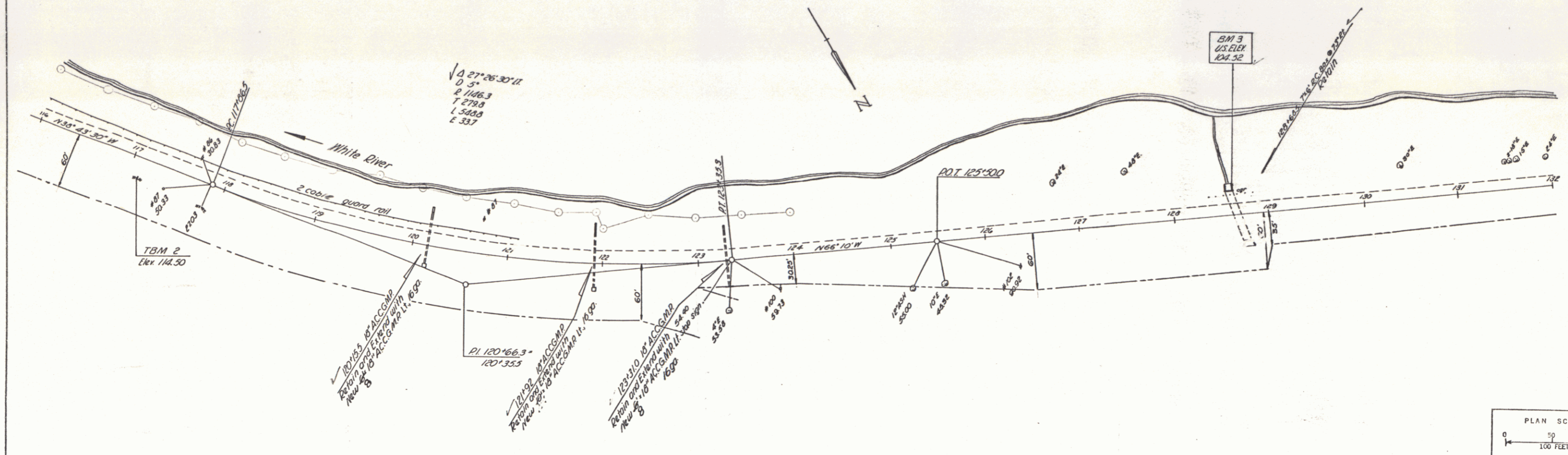
PLAN
 DATE: 6/84
 DRAWN BY: [unclear]
 CHECKED BY: [unclear]
 NO. 1

PROFILE
 DATE: [unclear]
 DRAWN BY: [unclear]
 CHECKED BY: [unclear]
 NO. 1

Three Cable Guard Rail with
 Steel Posts Item 323
 116+00 - 128+85 LT ✓
 128+37 - 128+85 LT ✓

Removal and Disposal of Present
 Guard Rail Item 350
 116+00 - 128+85 LT ✓
 128+37 - 128+85 LT ✓

Stone Fill for Slope Protection
 Item 322
 116+00 - 128+00 LT ✓



HARTFORD
 ER 16 (1)
 Sheet 5 of 26

