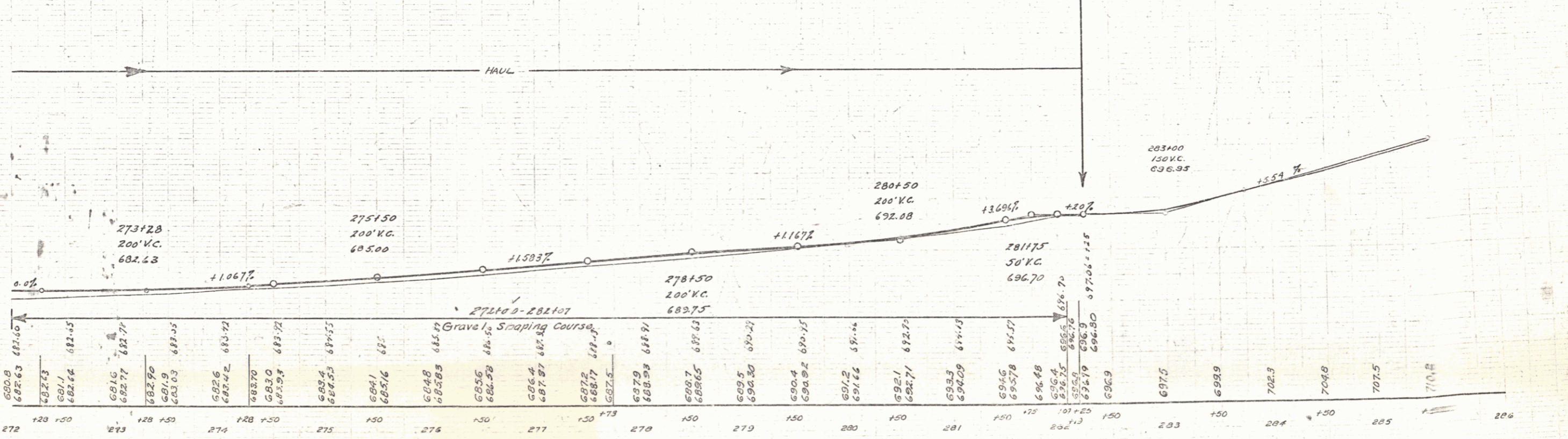
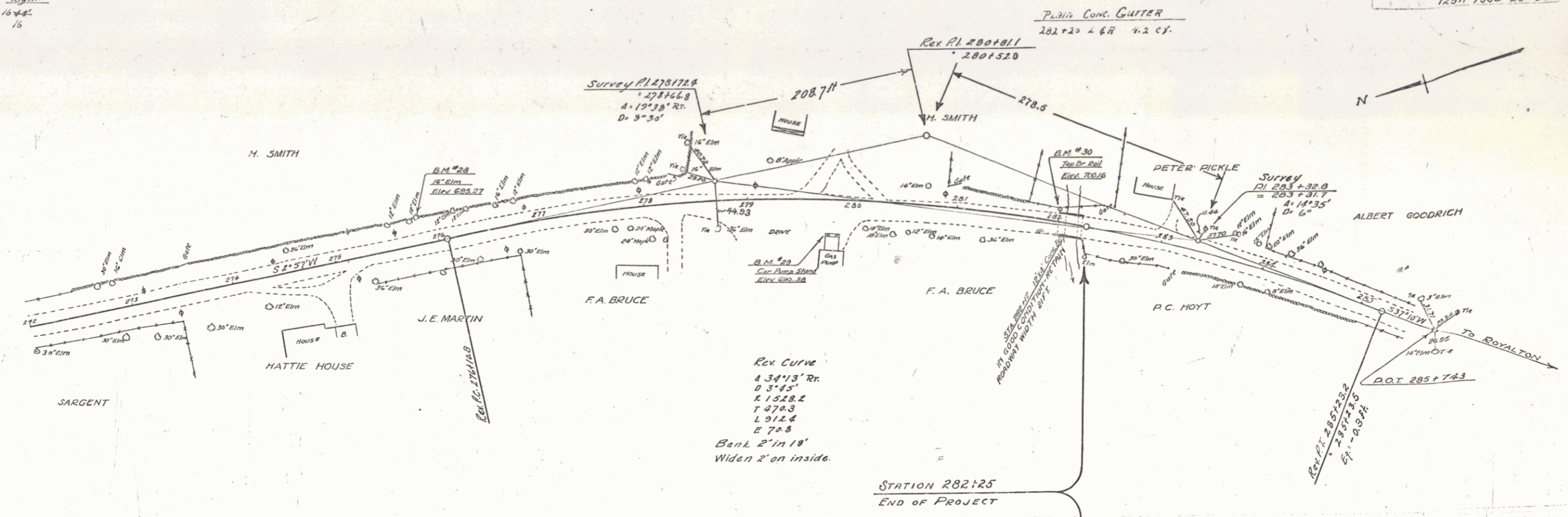


WOOD GUARD RAIL REQUIRED

Chain Sta.	Left	Right
282+12	16.48'	16.48'
282+25	16	16

129A 1030 23 85



B.M. #28 SPIKE IN ROOT OF 16" ELM 23.5 FT. LT. STA 275+05 ELEV. 685.27
 B.M. #29 CONCRETE FOUNDATION GASOLINE PUMP 31 FT. RT. STA 275+74 ELEV. 690.38
 B.M. #30 N.W. CORNER BRIDGE RAIL 19.5 FT. LT. STA. 282+00 ELEV. 700.16

SERIES F. NO. 129A
 SHEET 23 OF 85