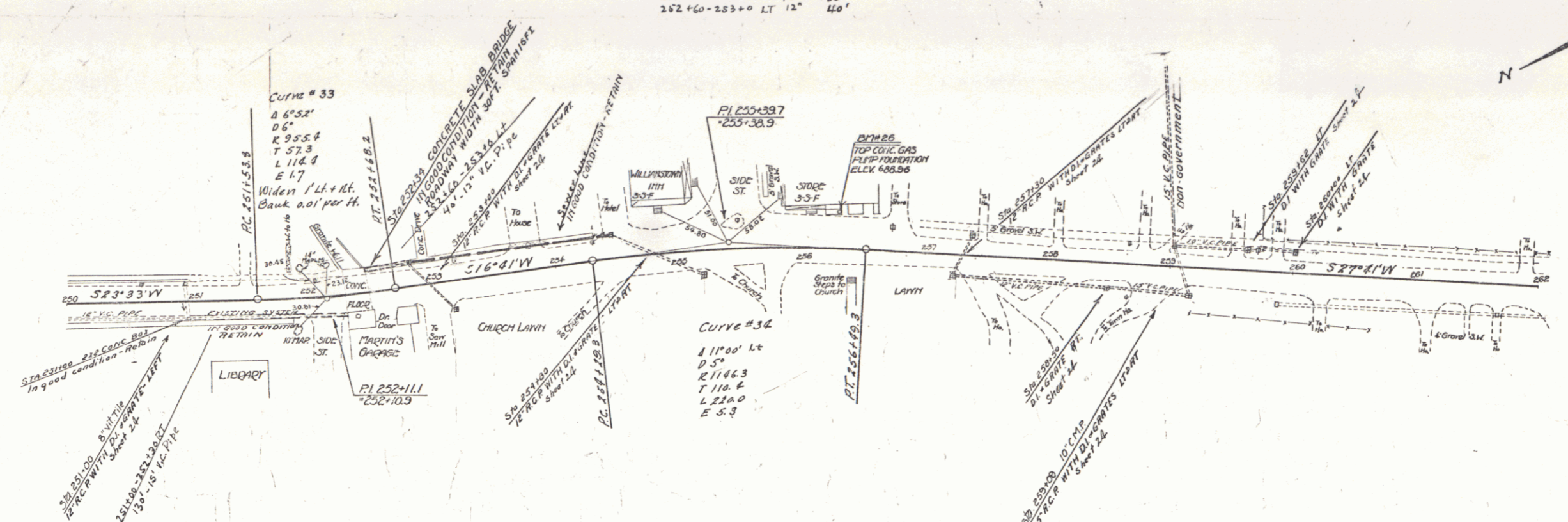


NEW RIGID CONC. PIPE ONLY REQUIRED

STA.	DIAM.	LENG.	CONC.	STEEL	DL GRATE
251+00	12"	25.00 FT	32.40 CY	108.00 LBS	2.4
251+00	12"	50	40.00 CY	173.00 LBS	2
251+00	12"	75.00	15.00	97.00	1.2
251+00	12"	30	7.50	210.00	2
251+00	12"	40	20	10.00	2

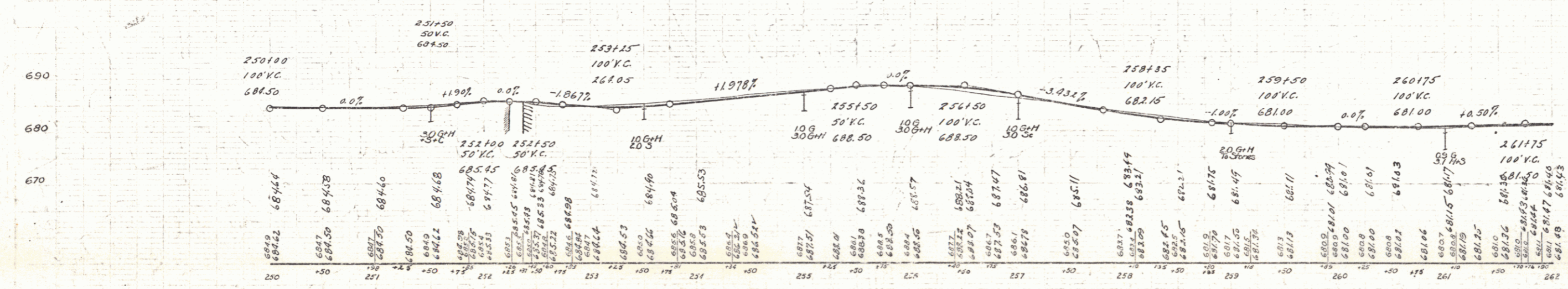
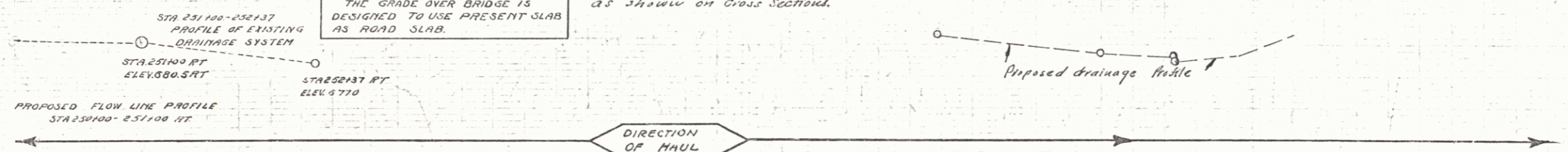
NEW VITRIFIED CLAY PIPE ONLY REQUIRED

STA.	DIAM.	LENG.	CONC.	STEEL	DL GRATE
249+94	12"	25.00 FT	32.40 CY	108.00 LBS	2.4
251+25	12"	25.00 FT	32.40 CY	108.00 LBS	2.4
251+25	12"	25.00 FT	32.40 CY	108.00 LBS	2.4
251+25	12"	25.00 FT	32.40 CY	108.00 LBS	2.4
251+25	12"	25.00 FT	32.40 CY	108.00 LBS	2.4



NOTE
THE GRADE OVER BRIDGE IS
DESIGNED TO USE PRESENT SLAB
AS ROAD SLAB.

NOTE Flatten shoulders thru village
as shown on cross section.



B.M. 26 - TOP OF CONC. FOUNDATION GAS PUMP 20' LT STA. 256+32 ELEV. 688.98