

**NEW REIN. CONCRETE PIPE CULY REQUIRED**      **WOOD GUARD RAIL REQUIRED**      **CABLE GUARD RAIL REQUIRED**

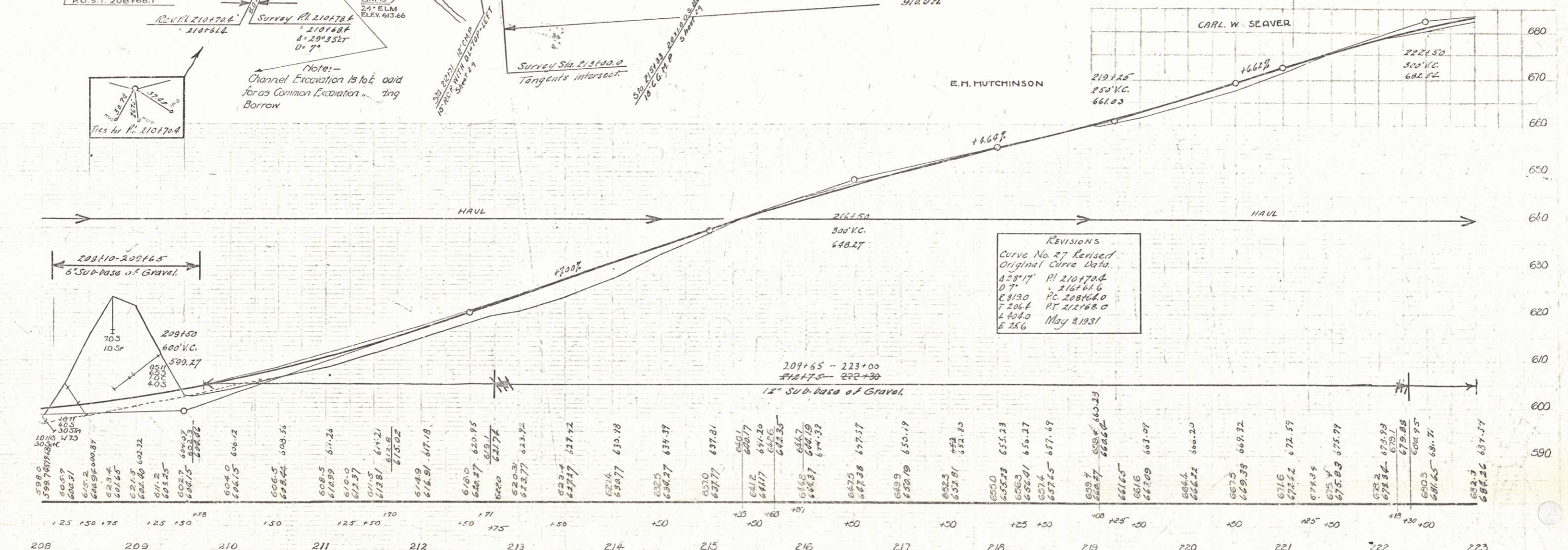
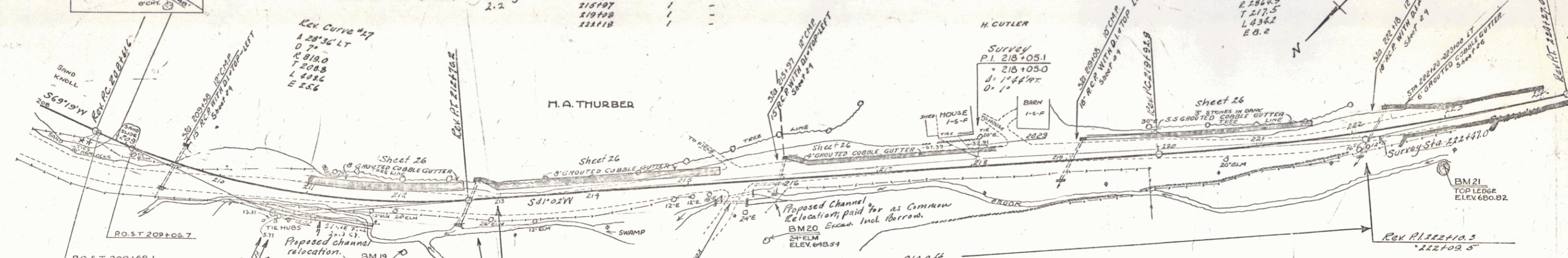
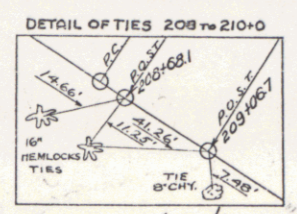
STA	DIAM	LENG	CONCR	STEEL	CEM	RUB	MAS	CULY STA	Left	Right	Stations	Leag	Cont	Qty/Leag
209+58	18"	300.0	14.00	14.00	14.00	14.00	14.00	209+58	24'	24'	209+58-213+00 R	422'	40'	467
215+00	18"	300.0	14.00	14.00	14.00	14.00	215+00	24'	24'	215+00-219+00 R	400'	40'	360	
219+00	18"	300.0	14.00	14.00	14.00	14.00	219+00	24'	24'	219+00-222+50 R	350'	40'	278	

**NEW CONCRETE PIPE CULY REQUIRED**      **WOOD GUIDE POSTS REQUIRED**

STA	DIAM	LENG	CONCR	RUB	MAS	CULY STA	Left	Right
215+33	18"	360.0	3.00	4.0	2.2	215+33	1	1
215+97	18"	360.0	3.00	4.0	2.2	215+97	1	1
219+00	18"	360.0	3.00	4.0	2.2	219+00	1	1
222+18	18"	360.0	3.00	4.0	2.2	222+18	1	1

**GRADED CABLE GUTTER REQUIRED**

Stations	Width	Area
211+00-212+00 L	9'	1.50 sq yds
212+00-213+00 L	9'	1.50 sq yds
213+00-214+00 L	8'	1.00 sq yds
214+00-215+00 L	7.5'	.80 sq yds
215+00-216+00 L	6.5'	.70 sq yds
216+00-217+00 L	6'	.60 sq yds
217+00-218+00 L	5'	.50 sq yds
218+00-219+00 L	4'	.40 sq yds
219+00-220+00 L	3'	.30 sq yds



B.M. NO. 19 SPIKE IN ROOT 24' ELM 51' FT. BY STA. 212+04: ELEV. 613.66  
 B.M. NO. 20 SPIKE IN ROOT 24' ELM 61' FT. STA. 215+79: ELEV. 649.54  
 B.M. NO. 21 TOP LEDGE IN FIELD 30' RT. STA. 222+95: ELEV. 600.82

**REVISIONS**  
 Curve No. 27 Revised  
 Original Curve Data  
 P.I. 210+70.0  
 L 206.4 P.C. 208+62.0  
 T 206.4 P.T. 212+78.0  
 E 216 May 8, 1931