

**CABLE GUARD RAIL REQUIRED**

Stations	Length	Const.	Post. Leng.
155+70	100	30"	40'
160+50	160	30"	40'

**NEW KEINK CONG. PIPE CULVERTS REQUIRED**

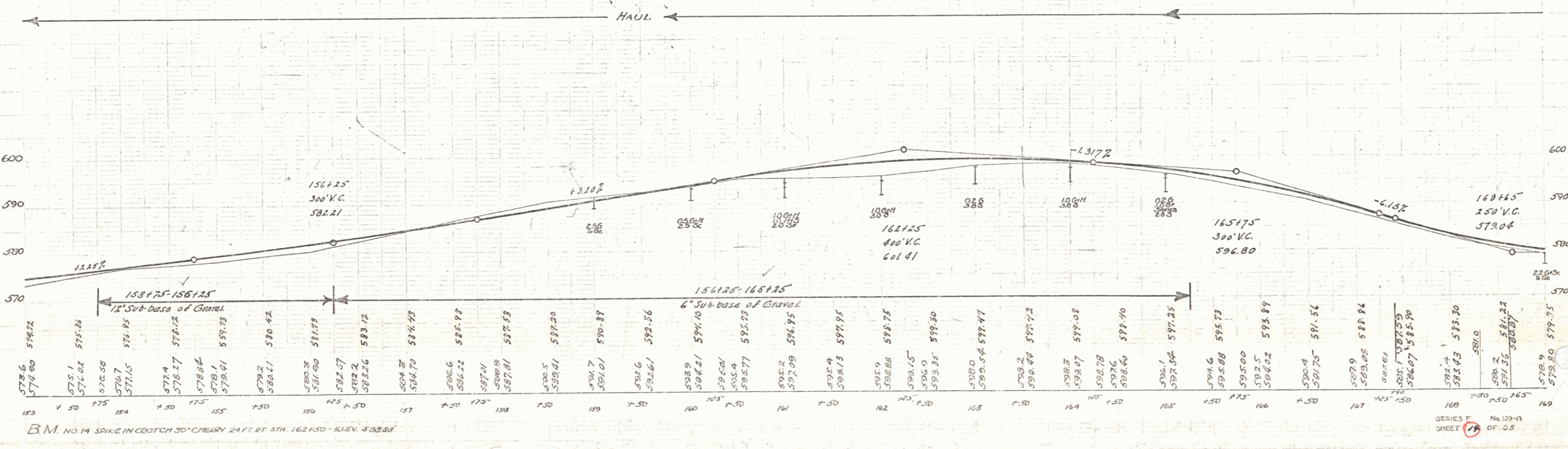
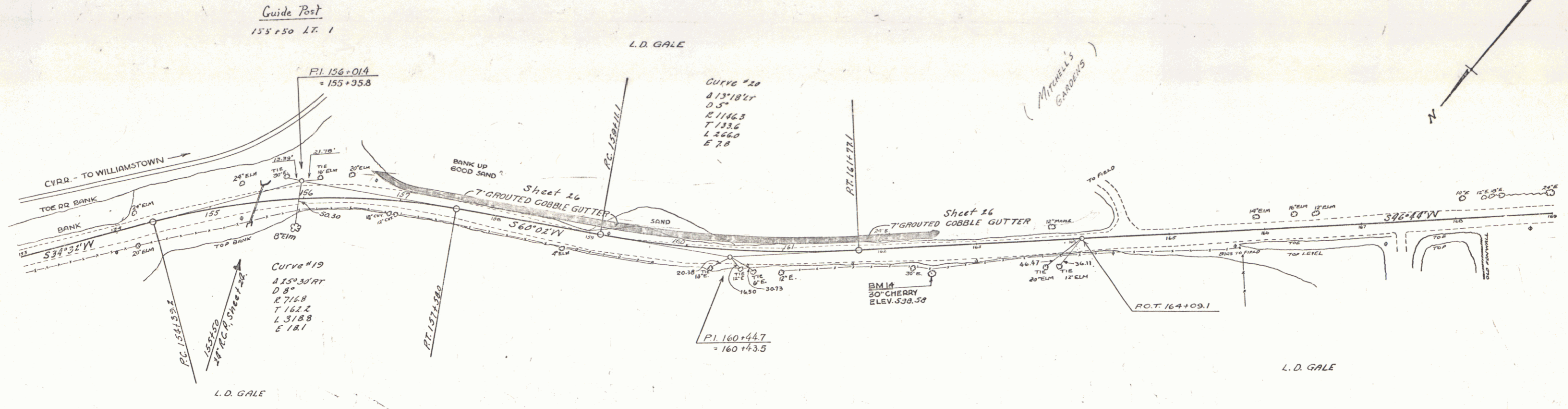
Station	Diam.	Leng.	Const.	Steel
155+50	24"	44'	3000	58"

**INTEGRAL CURB**  
155+50 - 157+92 LT. 2" - 2.99 LF

**GRAOUTED COBBLE GUTTER REQUIRED**

Stations	Width	Area
155+70-162+50	7'	447 sq. yds.
155+48	4'	7 " (Run off)
"	5'	" " " "

STATE OF MISSOURI  
1931 14 85



B.M. NO 14 SPIKE IN CROTCH 30" CHERRY 24 FT. RT. STA. 162+50 - ELEV. 532.88

SERIES F No. 129-A  
SHEET 24 OF 25