

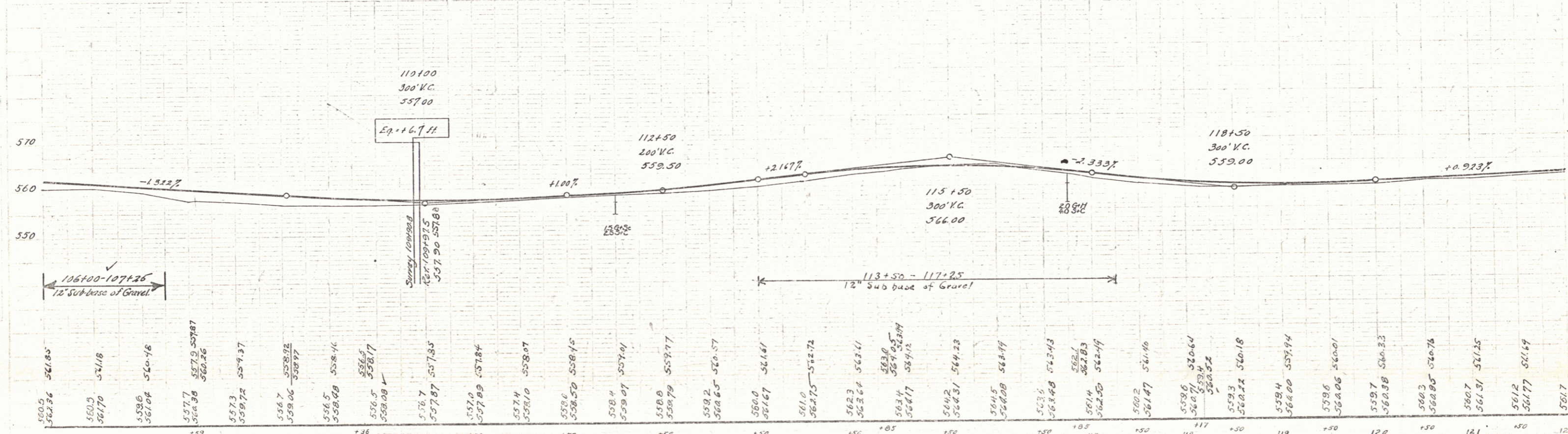
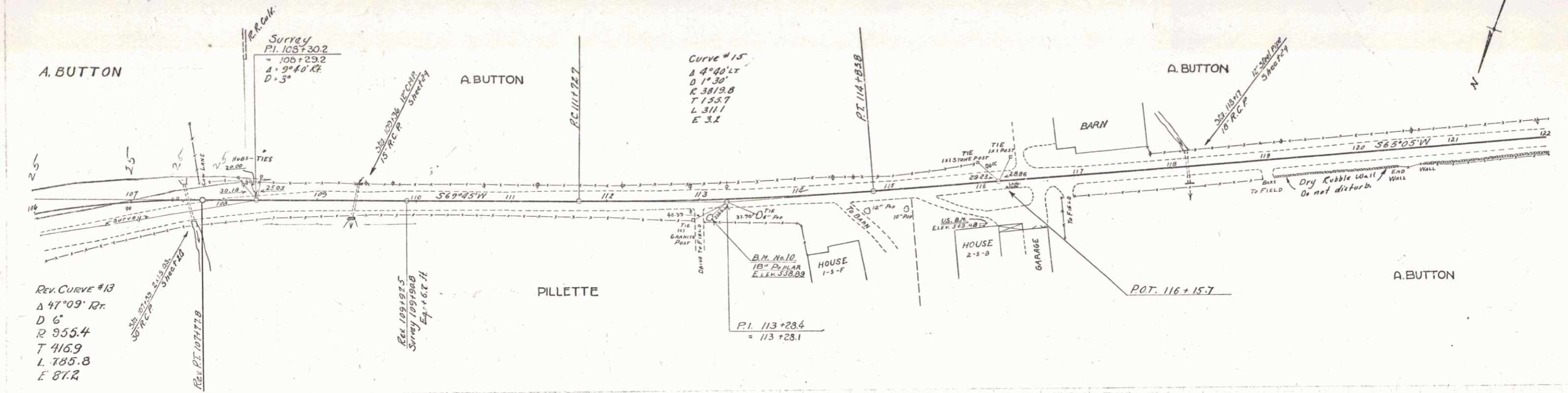
WOOD GUARD RAIL REQUIRED

Curv Sta.	Left	Right
1071.59	24'	24'
1091.36	24'	24'
1181.17	24'	24'

Guide Posts
118+17 LT 1

NEW REIN CONC PIPE CULV REQUIRED

STA.	WIDTH	LENG	CONC. Q.	STEEL CRY. REQ. MAX.	CONC. C.
1071.59	30"	40 FT	3.23 cu yd	3400 lbs.	
1091.36	30"	36	2.87 cu yd	3000 lbs.	
1181.17	30"	38.40	3.53	3624 cu yd	18.30 cu yd



B.M. NO. 10 SPICE IN ROOT 10' PAPAIR 19 FT RT. STA. 113+40 - ELEV. 558.89
U.S.B.M. TOP OF CONCRETE 11 FT RT. STA. 107+00 - ELEV. 564.98