

WOOD GUARD RAIL REQUIRED				CABLE GUARD RAIL REQUIRED				NEW RENTED CONC PIPE GULCH REQUIRED			
CUV. STA	Left	Right	Stations	Length	Constant	Pay Item	STA. DIAP	LEGS	CONC. PIPE	STEEL	GEN. R.V. MASS.
96147	2'	2'	100100-103176	376'	90'	416'	90447	120	50	10	1.25
99176	2'	2'					99130	18	60	12	2.00
101139	2'	-					101139	18	60	12	2.00
103111	2'	-					103111	15	40	2.5	4.16

Relay pipe
92+50 16' - 12" 1.2 con. Rev. Mas.

Integral curb
100+00 - 103+57 RT 2" = 344 LF

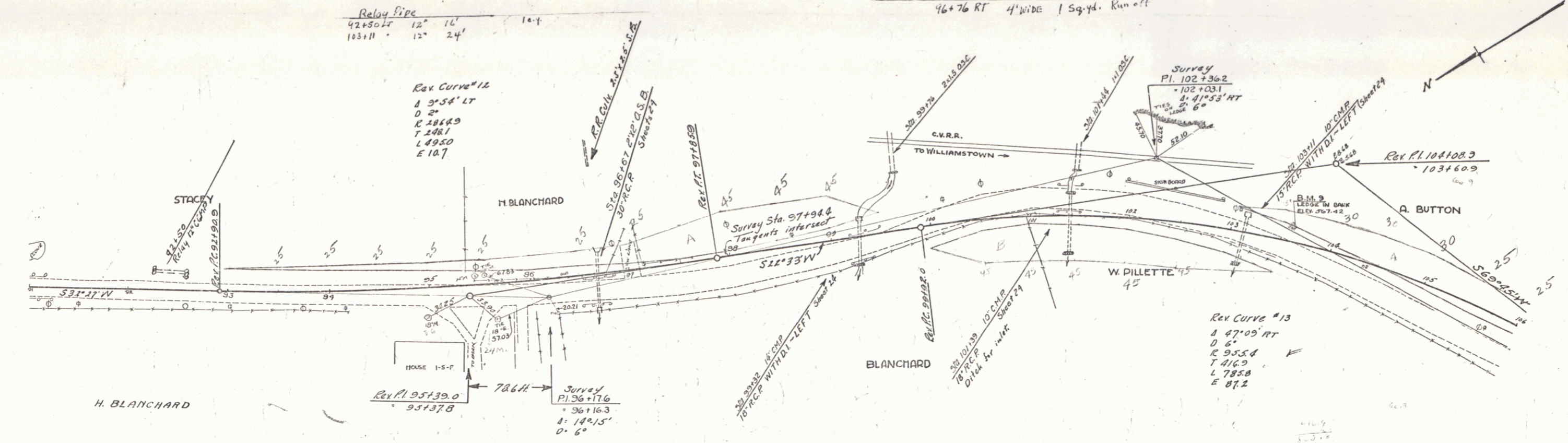
Metal Drop Inlet - Grate
103+11 RT

Grouted Cobble Gutter
96+76 RT 4' wide 1 Sq. yd. Run off

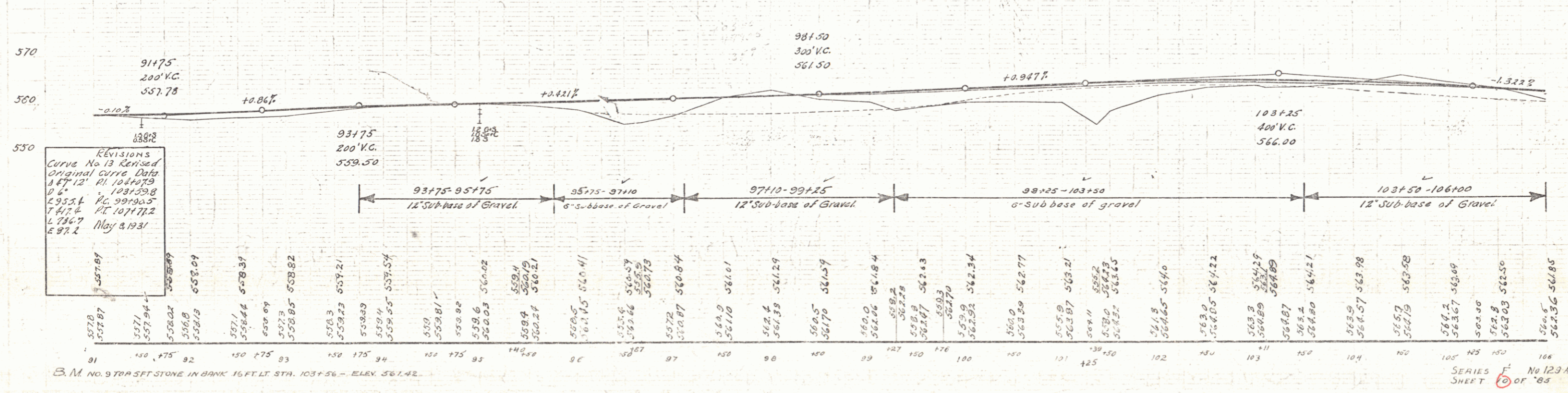
Relay Pipe
92+50 12" 16'
103+11 12" 24'

Rev Curve #12
R 35.54' LT
D 6'
C 286.69
T 248.1
L 295.0
E 10.7

Rev Curve #13
R 47.05' RT
D 6'
C 955.4
T 916.9
L 785.8
E 87.2



STA 96100 - 99100
CONSTRUCT 10% SLOPE INFILL
THROUGHOUT THIS SECTION



Revisions
Curve No. 13 Revised
Original Curve Data
R 47.12' RT
D 6'
C 955.4
T 916.9
L 785.8
E 87.2
May 8, 1931

SERIES F No 123A
SHEET 10 OF 85