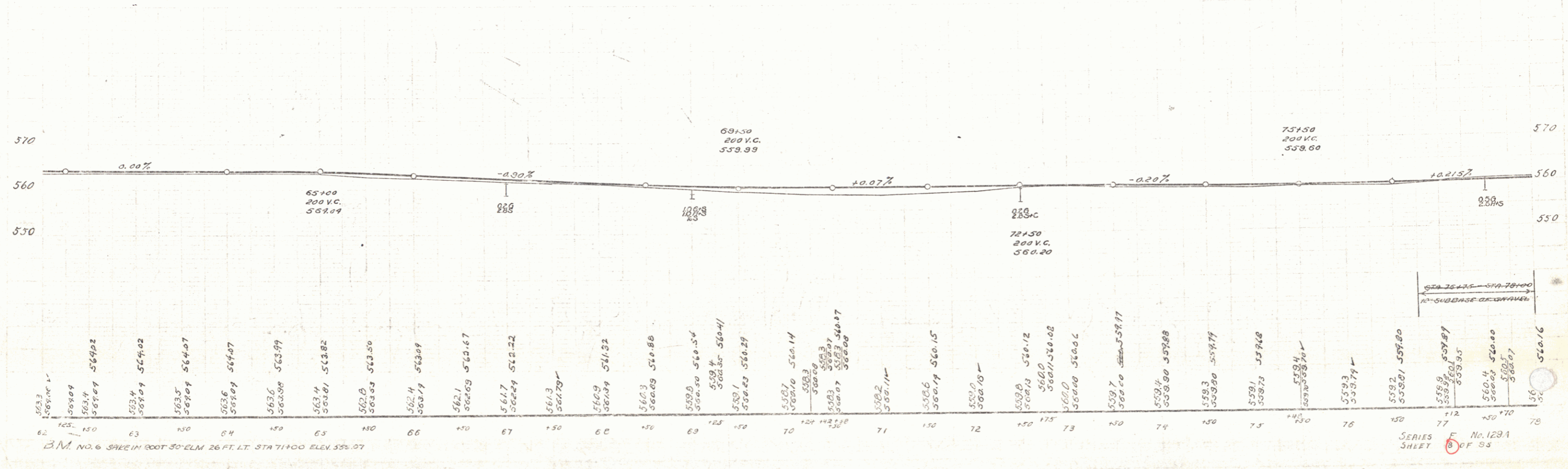
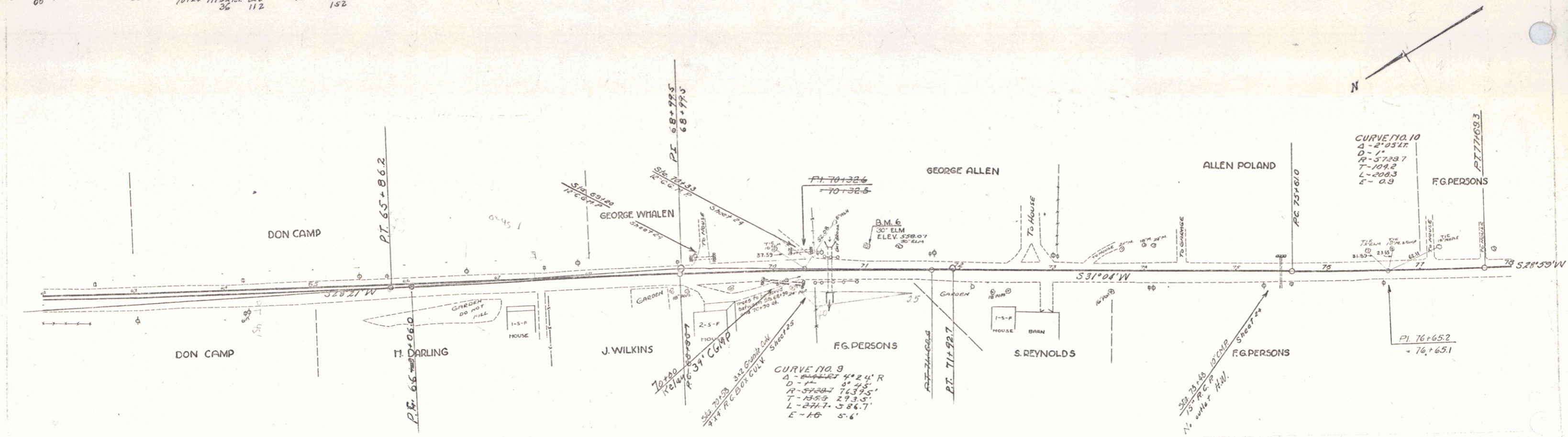


WOOD GUIDE POSTS REQUIRED				CABLE GUIDE PINS REQUIRED				NEW REIN CONC PIPE CULV REQUIRED				NEW REIN CONC BOX CULV REQUIRED				NEW G.C.M PIPE CULV REQUIRED				
CULV STA	LEFT	RIGHT		STATIONS	LENGTH	CONSTANT	PIV. H.M.	STA. DIAM.	LENG.	CEN. TO B. MAS.	STA.	SIZE	CONCR.	STEEL	1000 LBS.	STA.	SIZE	DIAM.	LENG.	CEN. TO B. MAS.
75+43				70+54.4	40'	40'	00'	75+98	15'	32.7'		70+30	48"	4" X 4"	1878	70+100	48"	12"	39.24 FT	14.23
65+26.67 to 60		68.5		70+24-71+52.8	128'	00'	148'												34 FT	10.04 (Relay Pipe)

129-A 1931 8 85



B.M. NO. 6 3/4" IN ROOT 30' ELM 26 FT. LT. STA 71+00 ELEV. 558.07

SERIES SHEET 8 OF 83

PUTNAM CHANCE 74-30

PUTNAM CHANCE 8-7-30

13