

WOOD GUIDE PASTS REQUIRED
 Bulk Sta Left Right
 61122 1 1

WOOD GUIDE PASTS REQUIRED
 Bulk Sta Left Right
 61123 1 1
 61122 1 1

NEW REINFORCED CONCRETE PIPE CULV REQUIRED
 STA DIAM LENGTH CONCRA STEEL CEMENT GRADE
 61123 10' 40 FT 14.5 CY 90.23' 1'
 61122 24' 30 2.4 V 100.27 26.27 CY

CGM PIPE CULV REQUIRED
 STA SIDE DIAM LENGTH CONCRA STEEL GRADE
 61130 27 12' 40 FT 14.5 CY 90.23' 1'
 61128 27 12' 32 FT 13.71 CY 86.53' 1'
 61148 17 12' 32 FT 13.71 CY 86.53' 1'

RELAYING PIPE CULV REQUIRED
 STA SIDE DIAM LENGTH CONCRA STEEL GRADE
 49105 12' 36 FT 10.93 CY 1'
 61302 12' 16 1'
 49

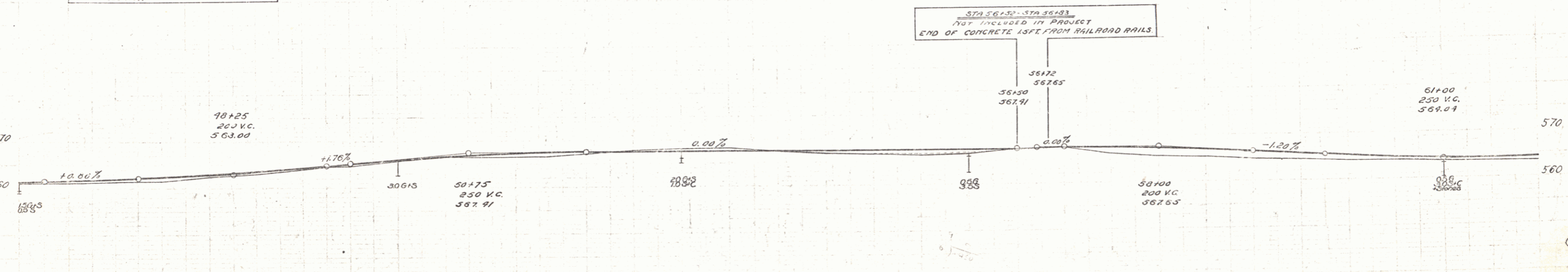
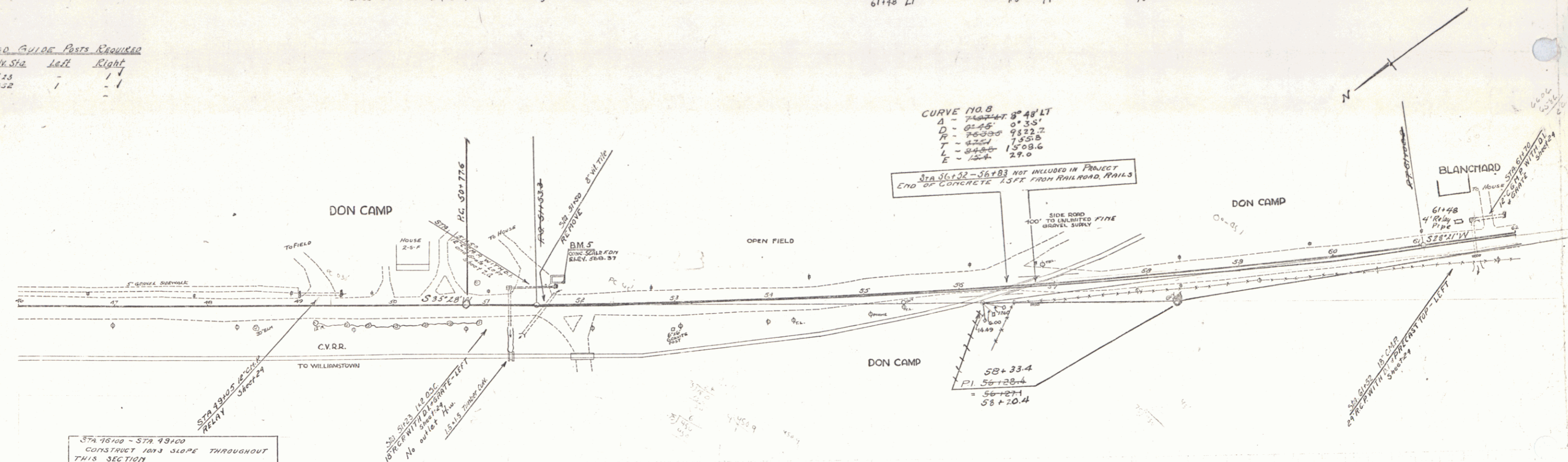
123-A 1931 7 85

7-4-30

CHURCH

B-7-30

CHURCH



Station	Elevation
46	561.2
47	561.1
48	561.4
49	561.7
50	562.0
51	562.3
52	562.6
53	562.9
54	563.2
55	563.5
56	563.8
57	564.1
58	564.4
59	564.7
60	565.0
61	565.3
62	565.6

BM No. 5 TOP S.W. CORNER CONC. SCALE FOR 25 FT. LT. STA 51104 ELEV. 568.57

SERIES SHEET 7 OF 85 No. 123A

12