

WOOD GUARD RAIL REQUIRED

Sta	Left	Right
35+00	-	+
43+74	-	24' ✓
43+08	-	24' ✓

WOOD GUIDE POSTS REQUIRED

Sta	Left	Right
35+00	+	-
43+77	+	-
43+08	+	-

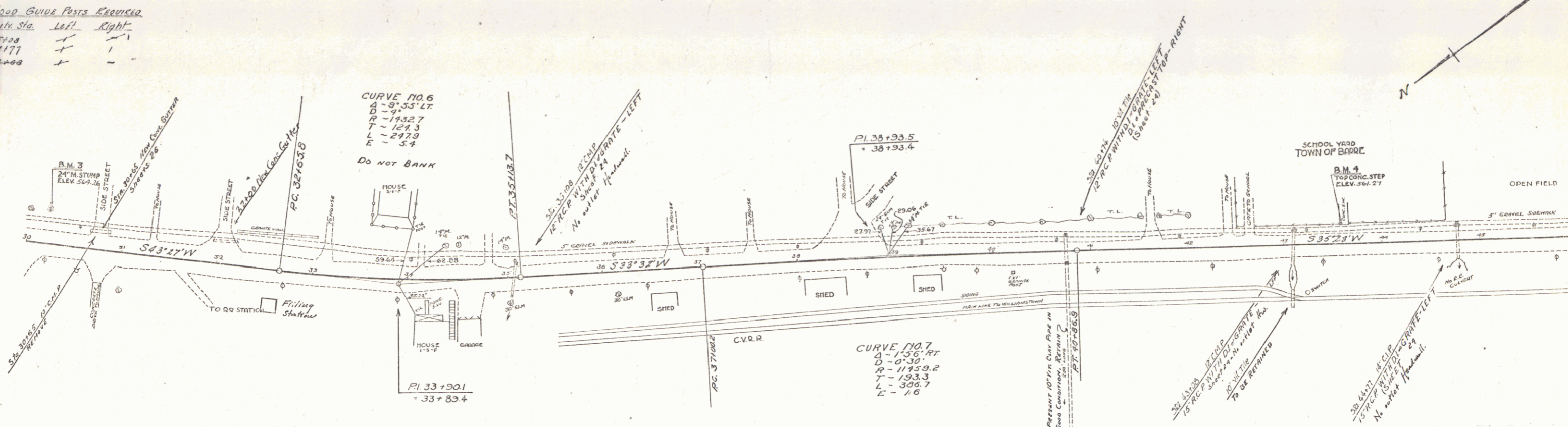
NEW REINF CONC PIPE GULCH REQUIRED

STA	DIAM	LENG	CONC	STEEL	DI GRATE
35+00	18"	36 FT	18" x 18" x 4"	18" x 18" x 4"	1"
43+74	18"	36 FT	18" x 18" x 4"	18" x 18" x 4"	1"
43+08	15"	30 FT	15" x 15" x 4"	15" x 15" x 4"	1"
44+77	15"	30 FT	15" x 15" x 4"	15" x 15" x 4"	1"

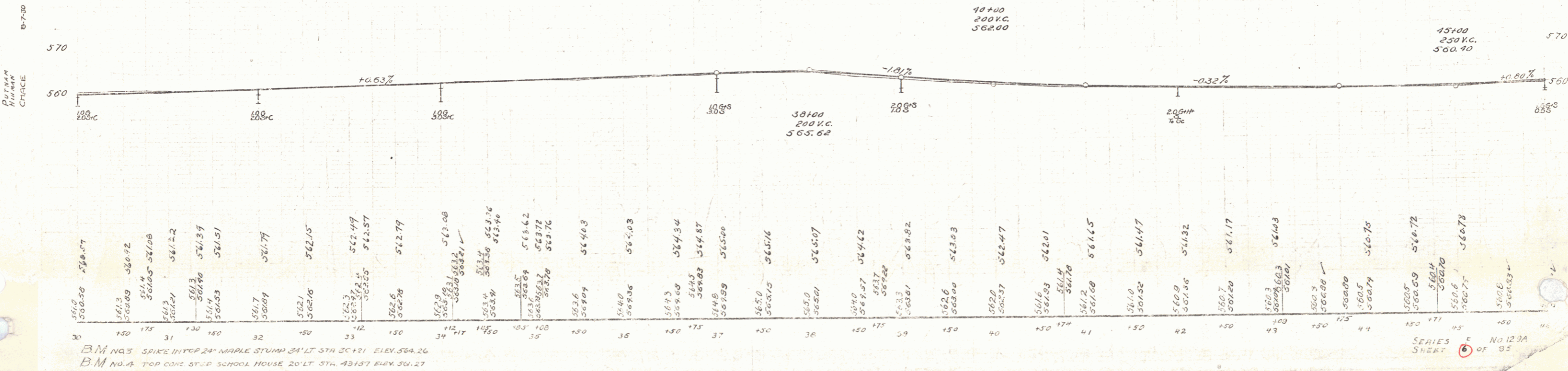
NEW CONCRETE GUTTER REQUIRED

STATION	ROR L	WIDTH	LENGTH	AREA
30+00 - 30+73	L	6'	73'	27.9 SQ. YD.
32+00 - 32+32	L	6'	32'	21.1 "

123-A 1931 6 85



Sta 22+00 - 40+00
A 4ft Gravel Shoulder is to be used throughout this section.



B.M. No. 3 SPIKE IN TOP 24" MAPLE STUMP 34' LT STA 30+21 ELEV. 564.26
B.M. No. 4 TOP CONC STEP SCHOOL HOUSE 20' LT STA. 43+57 ELEV. 561.27

SERIES SHEET 6 OF 95