

BROOKFIELD Pin# 00R721

COUNTY OF ORANGE

ROUTE VT 14

BEGINNING AT A POINT 0.401 MI NORTH OF THE RANDOLPH-BROOKFIELD TOWN LINE AND EXTENDING NORTHERLY 0.246 MI.

MP 0.398 - 0.645

RIGHT-OF-WAY DIVISION
TOWN FILE
PERPETUAL
Town of VT 14
(To Be Returned To R.O.W. Division)

STATE OF VERMONT
DEPARTMENT OF HIGHWAYS

TOWN OF BROOKFIELD
ROUTE No. 14 LOG STA. 27113

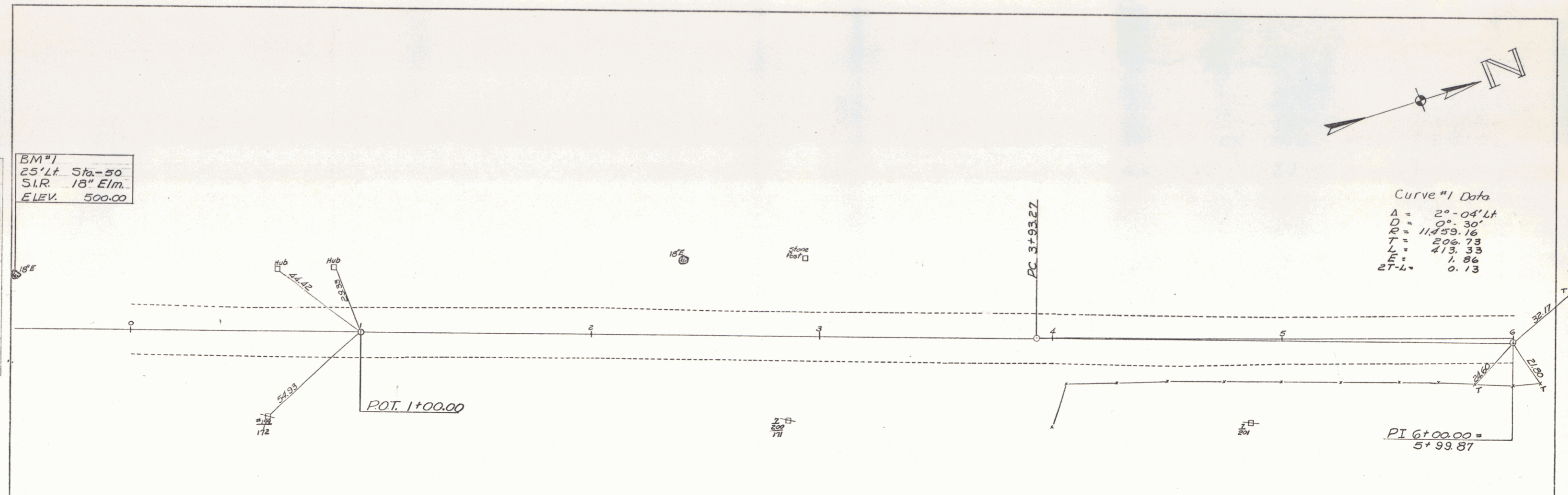
SCALE _____
SURVEYED BY _____
DRAWN BY _____ CHANGED BY _____

PROJECT No. SP 037-1-6665
SHEET 2 OF 12

APPROVED <u>H. P. Rabin</u> Road Eng. DATE <u>5-12-67</u>	APPROVED <u>L. M. Brown</u> Bridge Eng. DATE <u>5/11/67</u>	APPROVED <u>J. M. Linn</u> Highway Eng. DATE <u>5-11-67</u>	APPROVED <u>F. J. Jones</u> District Eng. DATE <u>5/11/67</u>	APPROVED <u>E. W. DeLong</u> Dist. Chief Eng. DATE <u>5/12/67</u>	APPROVED <u>R. H. Currier</u> Chief Eng. DATE <u>5/12/67</u>
---	---	---	---	---	--

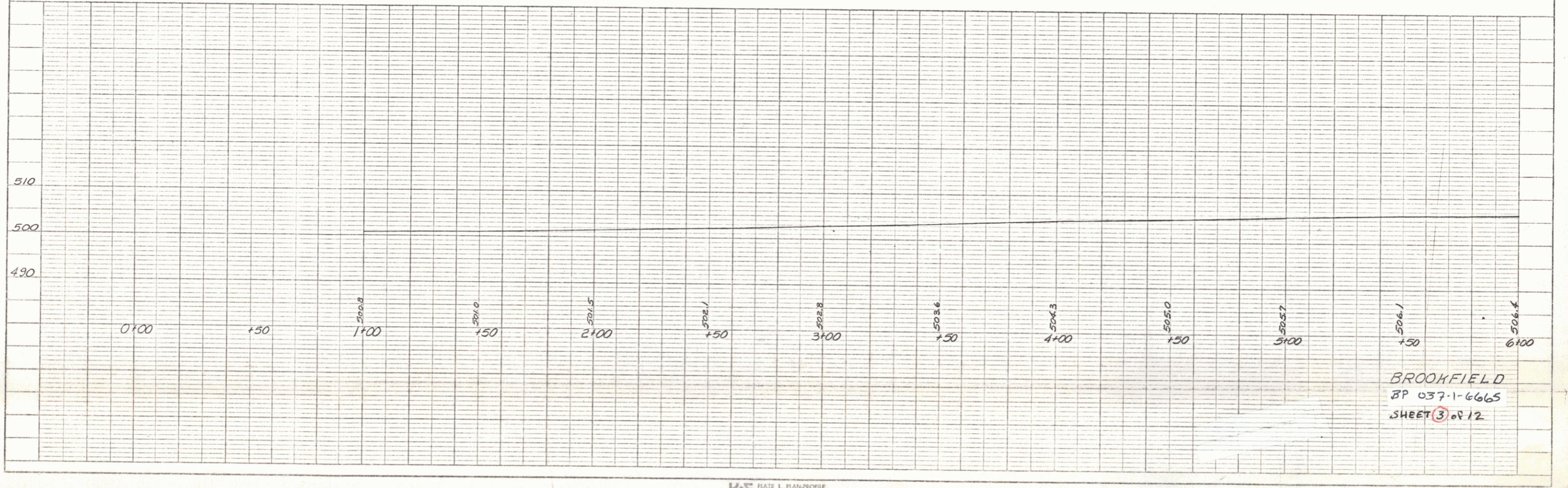
PLAN
 DRAWN BY: *ASB/MS*
 CHECKED BY: *ASB/MS*
 DATE: 11/83
 NO. 1

BM #1
 25' Lt Sta. - 50
 S.I.R. 18" Elm.
 ELEV. 500.00



Curve #1 Data
 $\Delta = 2^\circ - 04' - 14''$
 $D = 0^\circ - 30'$
 $R = 11,459.16$
 $T = 206.73$
 $L = 413.33$
 $E = 1.86$
 $ET-L = 0.13$

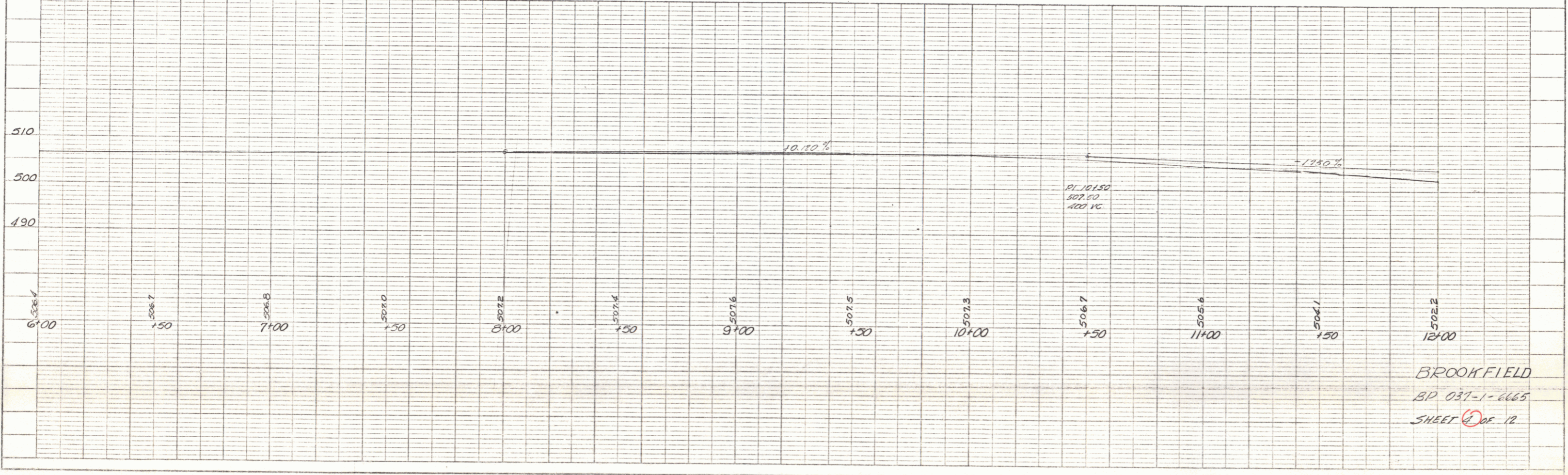
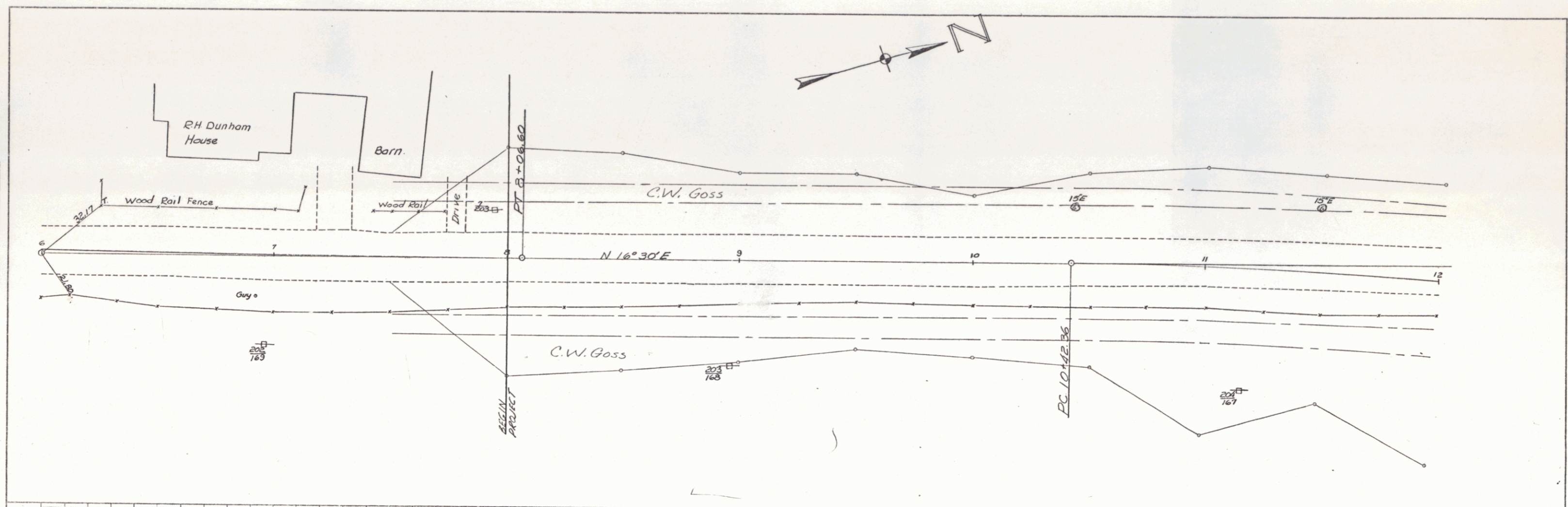
PROFILE
 DRAWN BY: *ASB/MS*
 CHECKED BY: *ASB/MS*
 DATE: 11/83
 NO. 1



BROOKFIELD
 BP 037-1-6665
 SHEET 3 of 12

PLAN
 SURVEYED BY
 NOTE BOOK
 No.

TITLE
 PROJECT
 No.

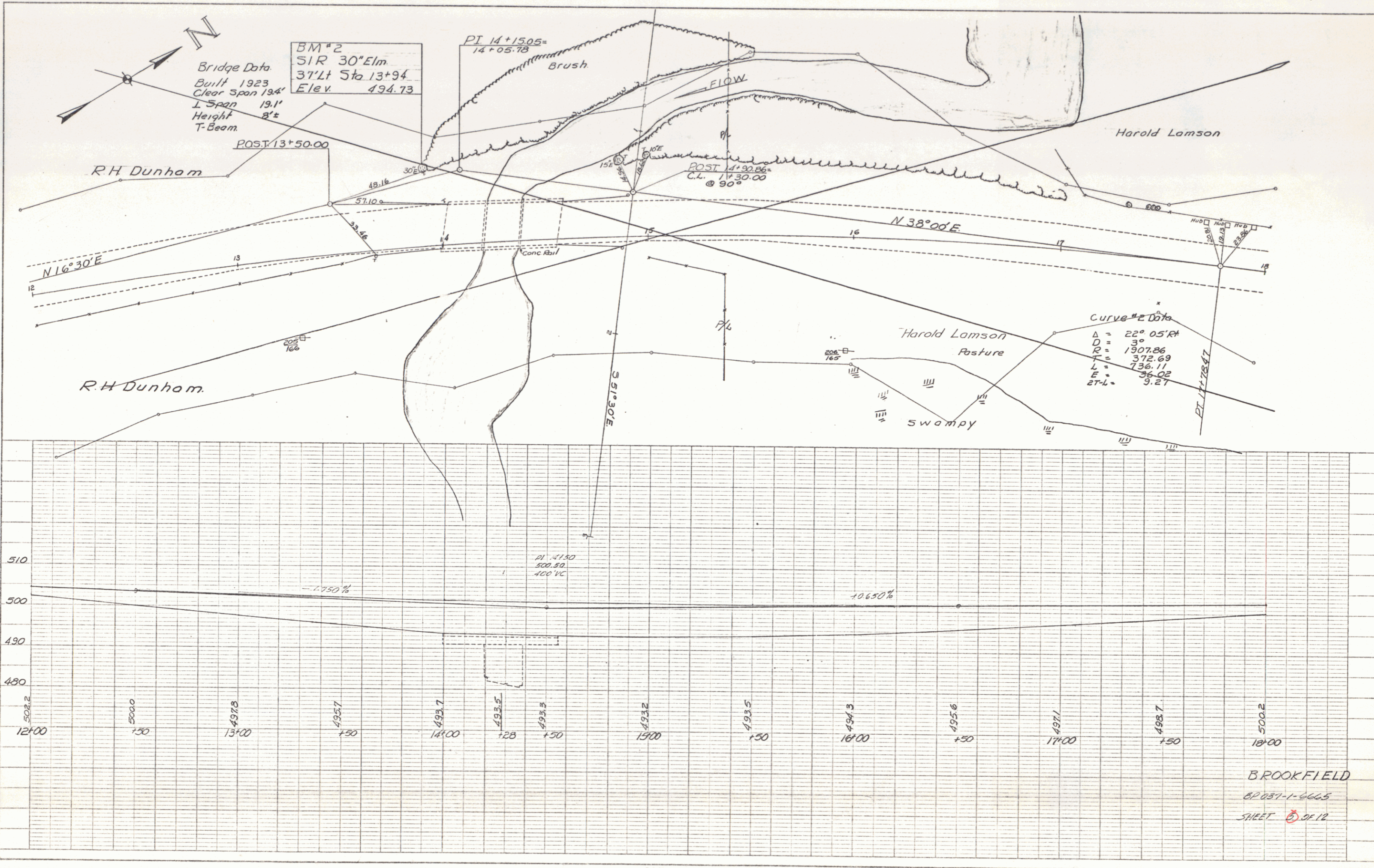


BROOKFIELD
 BD 037-1-6665
 SHEET 2 OF 12

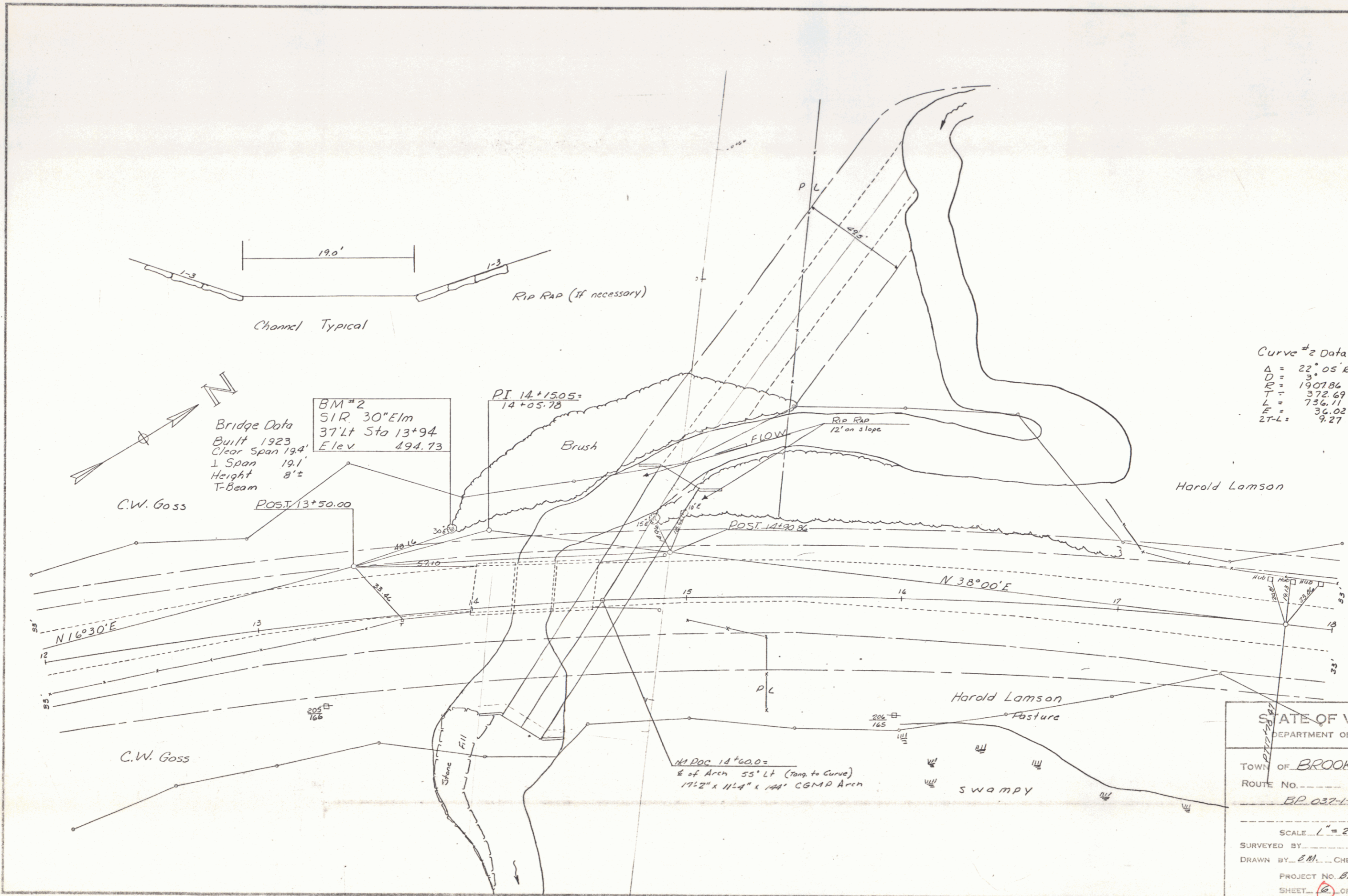
KE PLATE 1, PLAN-PROFILE
 KEITH & BEER CO.
 48 7022 PRINCETON, N.J.

PLAN
 DATE: 1/15/23
 DRAWN BY: R. H. Dunham
 CHECKED BY: R. H. Dunham
 NO. 1463

PROFILE
 DATE: 1/15/23
 DRAWN BY: R. H. Dunham
 CHECKED BY: R. H. Dunham
 NO. 1463



KE PLATE 16 PLAN/PROFILE
 RUFFEL & SMITH CO.
 48700 PHOENIX 3 PASADENA, CALIF. 91104



Bridge Data
 Built 1923
 Clear Span 19.1'
 L Span 19.1'
 Height 8'±
 T-Beam

BM #2
 SIR 30" Elm
 37' Lt Sta 13+94
 Elev 494.73

PI 14+150.5
 14+05.78

Curve #2 Data

Δ =	22° 05' 24"
D =	3
R =	1907.84
T =	372.69
L =	736.11
E =	36.02
ET-L =	9.27

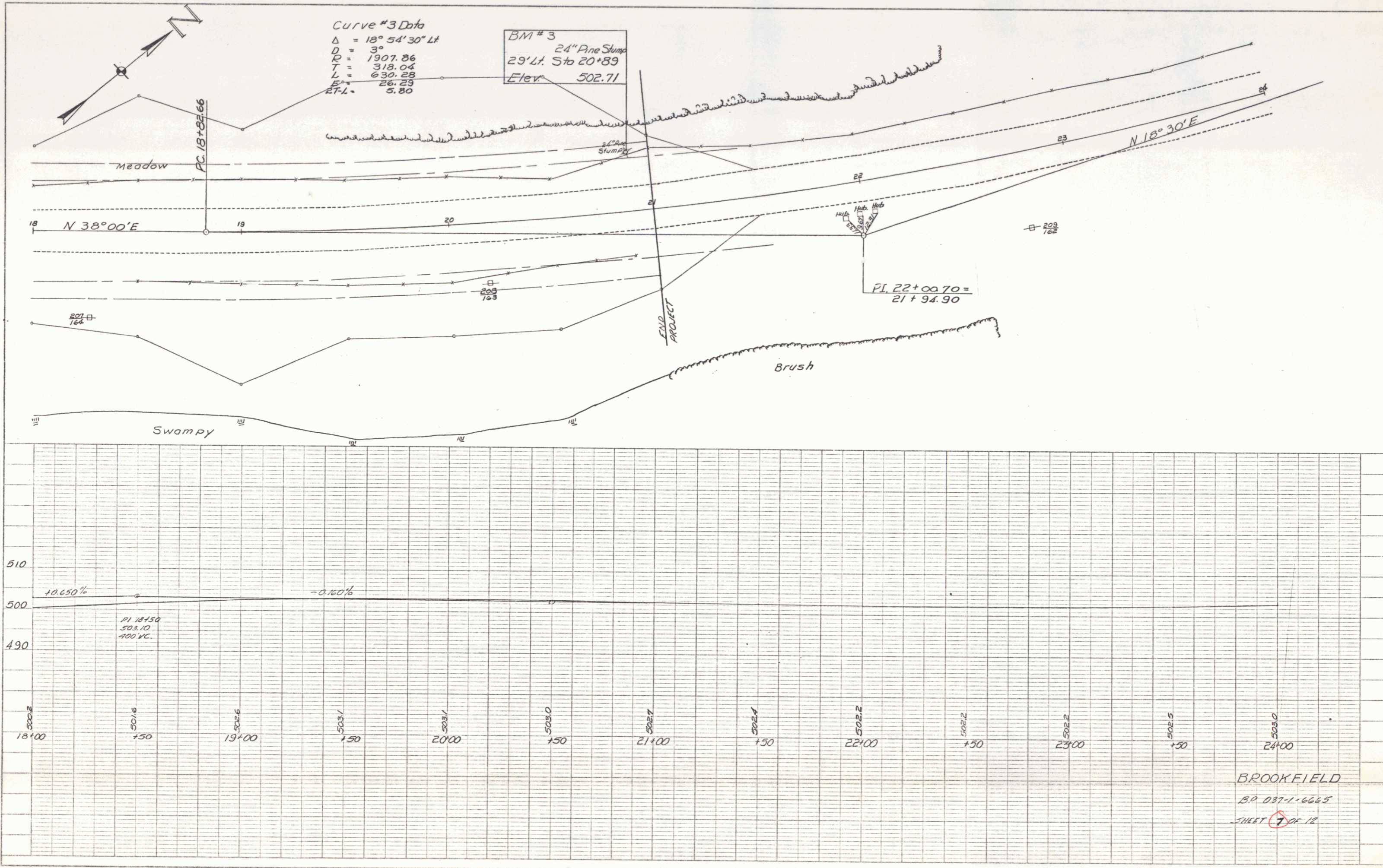
POST 13+50.00
 POST 14+90.84

HI POC 14+60.0
 # of Arch 55' Lt (Temp to Curve)
 1752" x 1124" x 144" CGMP Arch

STATE OF VERMONT	
DEPARTMENT OF HIGHWAYS	
TOWN OF	BROOKFIELD
ROUTE NO.	LOG STA.
BP 037-1-6665	
SCALE 1" = 20'	
SURVEYED BY	
DRAWN BY E.M. CHECKED BY P.K.	
PROJECT NO. BP 037-1-6665	
SHEET 12 OF 12	

PLAN
 DATE: 1/16/63
 DRAWN BY: Palmer, Hopkins
 CHECKED BY: [Signature]
 NO. OF SHEETS CHECKED: [Blank]

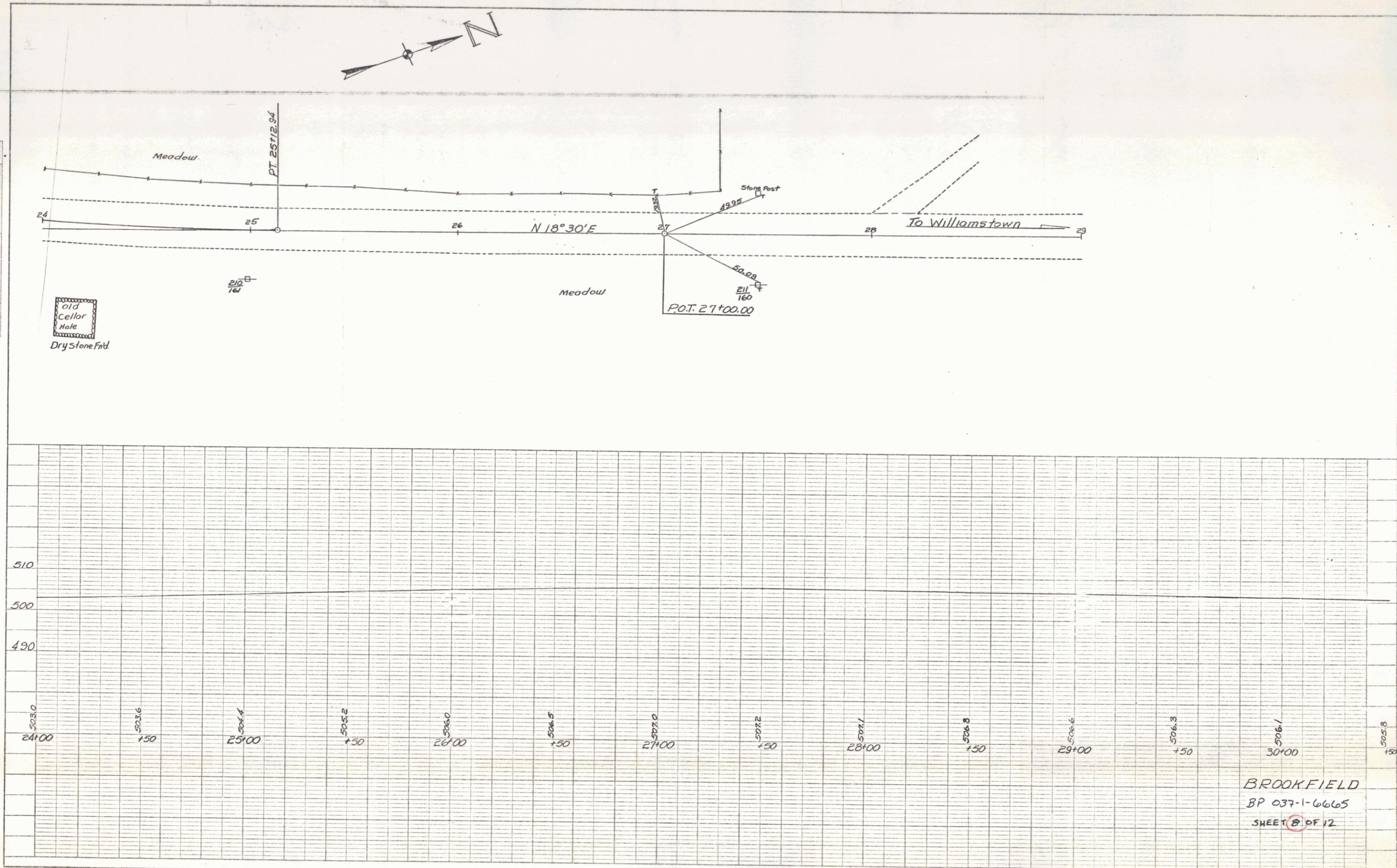
PROFILE
 DATE: 1/16/63
 DRAWN BY: Palmer, Hopkins
 CHECKED BY: [Signature]
 NO. OF SHEETS CHECKED: [Blank]



BROOKFIELD
 B.P. 037-1-6665
 SHEET 7 OF 12

PLAN
 SURVEYED BY
 H. B. HARRIS
 1/28/53
 CHECKED BY
 H. B. HARRIS
 1/28/53
 NOTE BOOK NO. 11845
 SET OF W.P. CHECKED

PROFILE
 SURVEYED BY
 H. B. HARRIS
 1/28/53
 CHECKED BY
 H. B. HARRIS
 1/28/53
 NOTE BOOK NO. 11845
 SET OF W.P. CHECKED



BROOKFIELD
 BP 037-1-6665
 SHEET 8 OF 12