

WOOD GUARD RAIL REQUIRED

Curv. Station	LT.	RT.
1153+13	24'	24'
1153+95	-	24'
1153+17	-	24'

CABLE GUARD RAIL REQUIRED

Sta.	Len. R.	Len. C.	Len. B.	Len. L.
1153+13-1153+17	160'	40'	200'	
1153+17-1153+19	100'	40'	220'	

NEW REIN. CONC. PIPE CULVERTS REQUIRED

STATION	DIAM.	LENG.	CONC. A.	CONC. C.	STEEL
1153+47	18"	150'	1.5	1.5	54#
1158+95	24"	150'	2.4	2.4	54#

NEW REIN. CONCRETE BOX CULVERTS

Sta.	SIZE	CONC. A.	STEEL
1153+47	18" x 18"	1.5	54#
1158+95	24" x 24"	2.4	54#

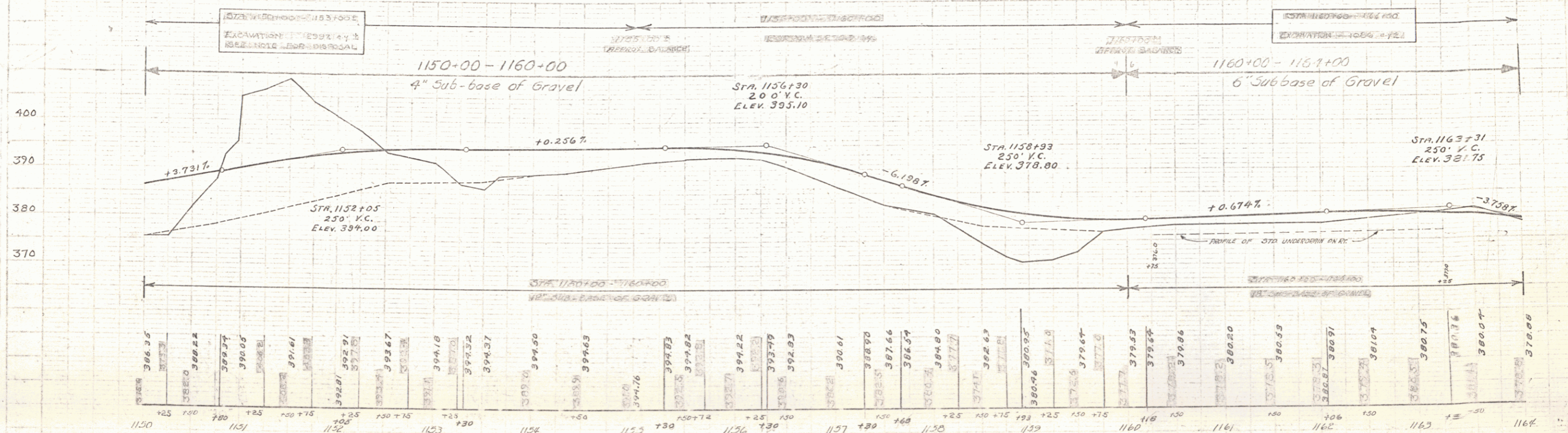
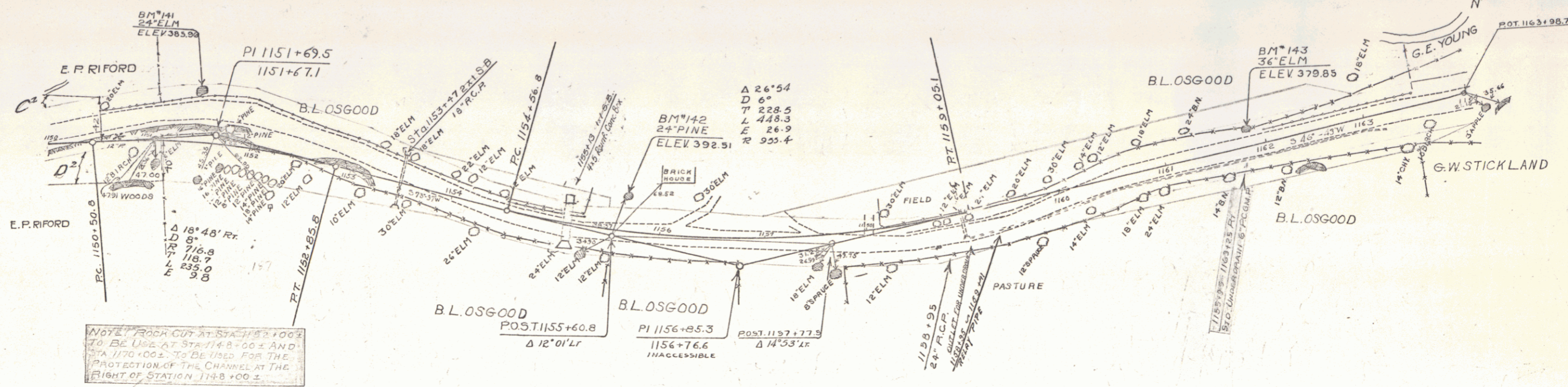
STANDARD UNDERDRAIN REQUIRED

STATION	LENG.	C.R.M.
1153+47	150'	1.5
1158+95	150'	2.4

RELAY PIPE REQUIRED

STATIONS	DIAM.	LENG.	C.R.M.
1153+47	18"	150'	1.5
1158+95	24"	150'	2.4

Parcel	Kind of Instrument	Date of Grant	Grantor	Grantee	Recorded	Remarks
C ² 40 ²	O.C.D.	11-2-31	ERLEN, R. J. & W.	Stef W. J.	152-154	2-2-31



B.M. # 141 SPIKE IN ROOT OF 24" ELM. 48' LT. OF STA. 1151+52 ELEV. 385.96
 B.M. # 142 SPIKE IN ROOT OF 24" PINE 32' LT. OF STA. 1155+65 ELEV. 392.51
 B.M. # 143 SPIKE IN ROOT OF 36" ELM 15' LT. OF STA. 1161+83 ELEV. 379.85

SERIES F No. 80-L
SHEET 60 OF 141