

WOOD GUARD RAIL REQUIRED	LT	RT
1135+19	24	-
1144+09	24	-

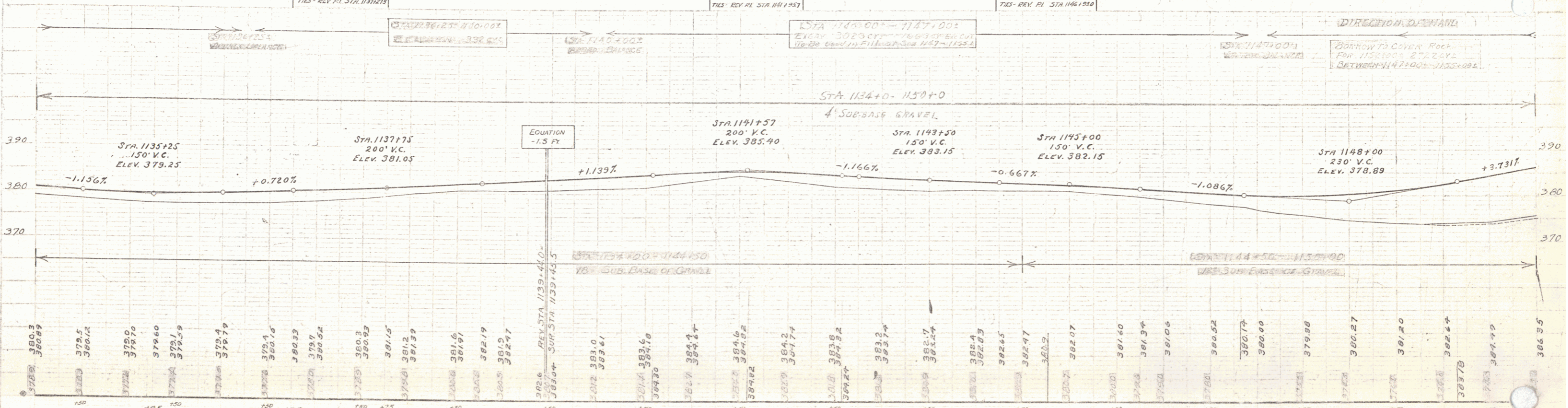
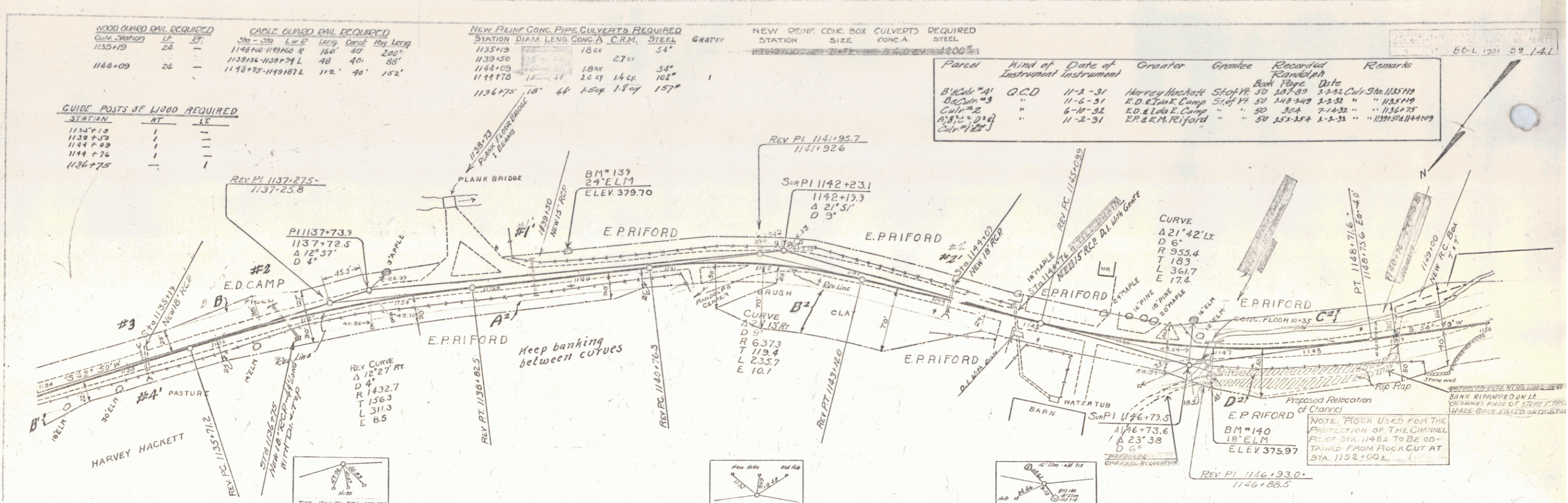
CABLE GUARD RAIL REQUIRED	LT	RT
1148+00	18	-
1148+75	18	-

NEW REIN. CONC. PIPE CULVERTS REQUIRED	STATION	DIAM.	LENG.	CONC. A	C.R.M.	STEEL	GRATE
	1135+19	18"	27'	54"			
	1139+50	18"	27'	54"			
	1144+09	18"	27'	54"			
	1144+75	18"	27'	54"			

NEW REIN. CONC. BOX CULVERTS REQUIRED	STATION	SIZE	CONC. A	STEEL
	1142+00	24" x 24"	54"	

Parcel	Kind of Instrument	Date of Instrument	Grantor	Grantee	Recorded	Remarks
Block #4	Q.C.D.	11-2-31	Harvey Hackett	Stof PR	50 287.89	3-2-32 Cul. Sta. 1135+19
Block #3	"	11-6-31	E.D. & Leda E. Camp	Stof PR	50 248.349	3-2-32 " " 1135+19
Block #2	"	6-18-32	E.D. & Leda E. Camp	"	50 304	7-4-32 " " 1135+19
Block #1	"	11-2-31	E.P. & R.M. Rirford	"	50 252.254	1-2-31 " " 1135+19/1144+09

GUIDE POSTS OF WOOD REQUIRED	STATION	RT	LT
	1135+19	1	1
	1139+50	1	1
	1144+09	1	1
	1144+75	1	1



BM #139 SPIKE IN ROOT OF 24" ELM 16.5' LT. OF STA. 1139+90 ELEV. 379.70
 BM #140 SPIKE IN ROOT OF 18" ELM 27' FT. OF STA. 1147+00 ELEV. 373.97

SERIES F. No. 804
 SHEET 59 OF 131

57