

NOTE  
WHERE NECESSARY, CABLE RAIL  
TO BE REMOVED AND STORED  
FOR USE IN 1932

GUIDE POSTS REQUIRED	REQUIRED
CUL. 36+00	1
1124+40	1
1126+91	1
1128+47	1
1130+35	1
1132+50	1

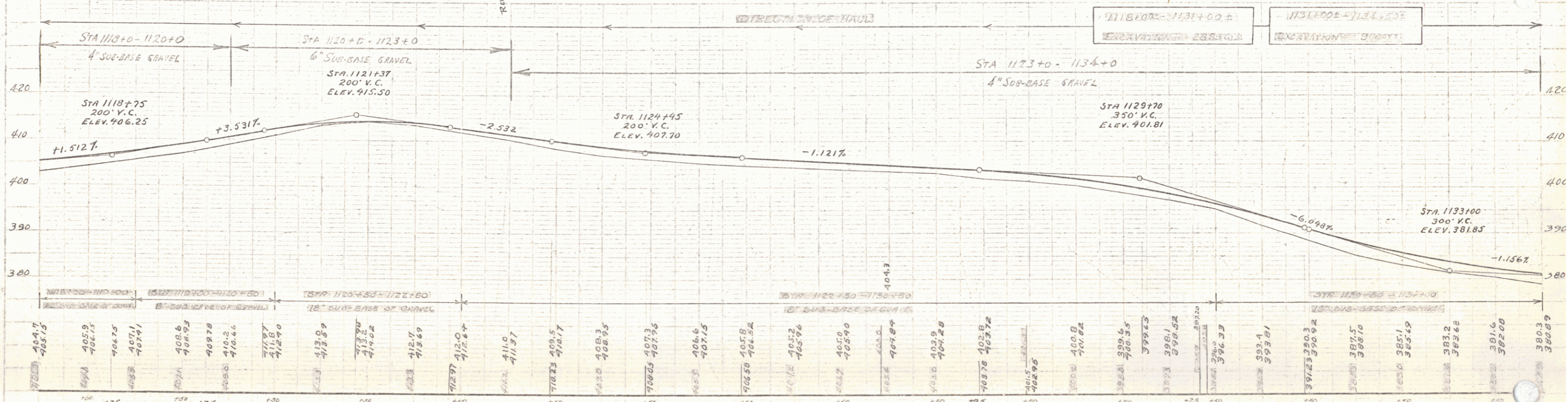
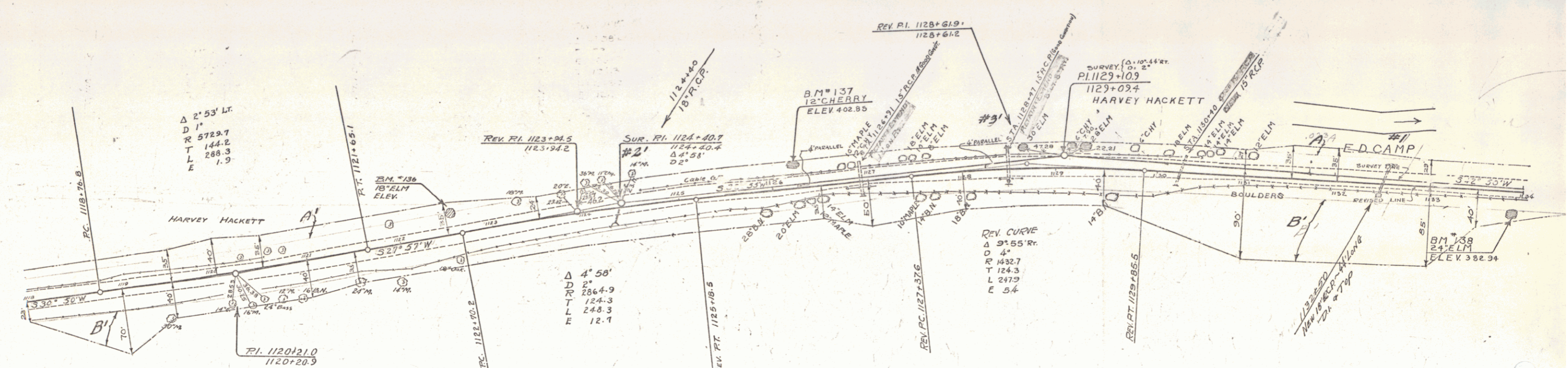
NEW REINF. CONC. PIPE CULVERTS REQUIRED

STATION	DIAM.	LENG.	CONC.	C.R.M.	STEEL
1124+40	18"	44'	1.5"	1.8"	54#
Rt. 1126+91	18"	44'	1.5"	1.8"	54#
1128+47	18"	44'	1.5"	1.8"	54#
1130+35	18"	44'	1.5"	1.8"	54#
1132+50	18"	44'	1.5"	1.8"	54#

Period	Kind of Instrument	Date of Observation	Operator	Grade	Revised	Remarks
A.B. Culvert	Q.C.D.	11-2-31	Harvey Hackett	Staf. 1124+40	30	287.80
B	"	11-2-31	E.D. & Co. E. Camp	"	30	248.34
Culvert #1	"	6-10-32	R.D. & W.A. E. Camp	"	30	304

CABLE GUARD RAIL REQUIRED

STATION	LENG.	CONC.	STEEL
1118+75	125'	80"	133#



B.M. #136 SPIKE IN ROOT OF 18' ELM 18' LT. OF STA. 1122+53 ELEV. 412.24  
 B.M. #137 SPIKE IN ROOT OF 12" CHERRY 18.5' LT. OF STA. 1126+91 ELEV. 402.85  
 B.M. #138 SPIKE IN ROOT OF 24" ELM 23' FT. OF STA. 1133+89 ELEV. 382.94

SERIES F No. 60-L  
 SHEET 58 OF 141