

GUIDE POST OF HOOD REQUIRED		
STATION	RT.	LT.
1018+03	1	1

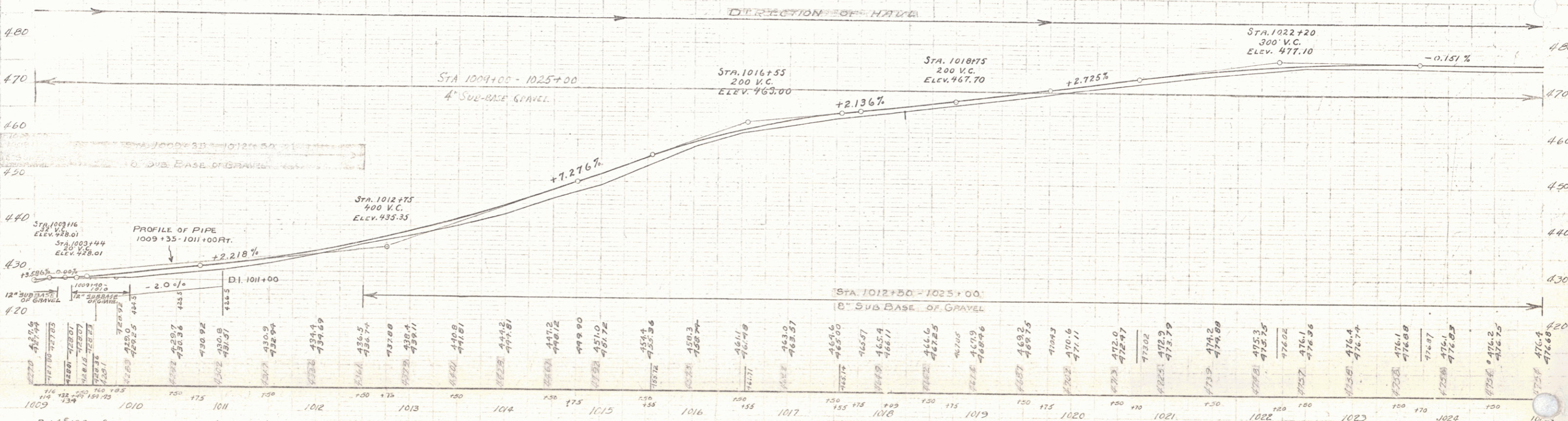
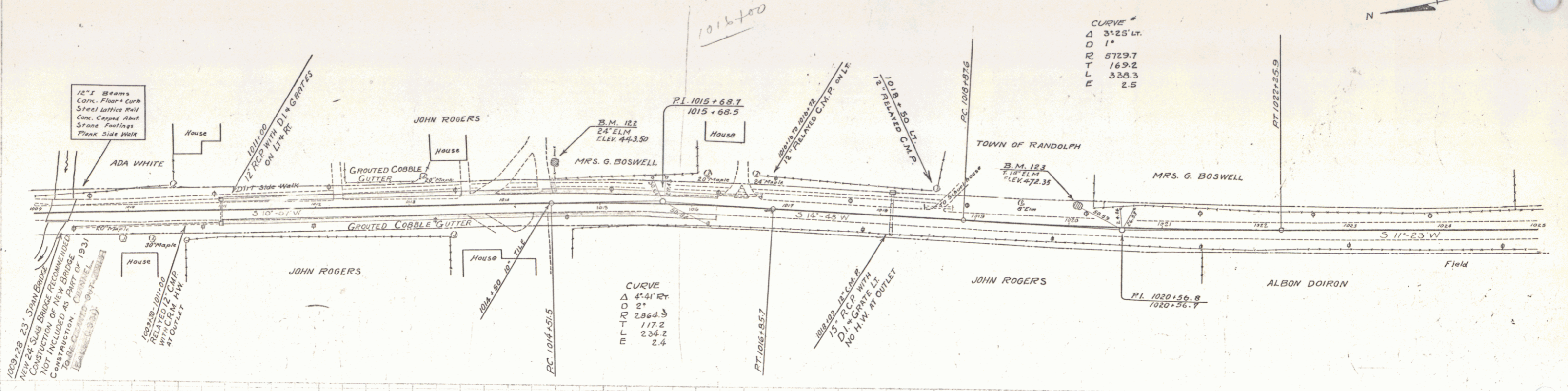
REIN. CONC. PIPE CULVERTS REQUIRED					
STATION	DIAM	LENG	CONC. A	CONC. C	STEEL GRATE
1018+03	24"	4.25'	1.4 cr	1.2 cr	116"

GROUTED COBBLE GUTTER REQUIRED				
STATION	L OR R	WIDTH	LENG	AREA
1010+00-1016+25	L	5'-0"	525'	292 sq
1010+00-1016+25	R	5'-0"	525'	292 sq

RELAYED PIPE REQUIRED		
STATIONS	LENG	C.R.M.
1009+30-1011+00 RT		1.0 cr
1018+50- LT		2.0 cr
1016+16-1016+72 LT.		1.0 cr

STATE OF ILLINOIS
 DIVISION OF HIGHWAYS
 PROJECT NO. 80-L 1931 51 1-41

EAST RANDOLPH VILLAGE



B.M. 122 SPIKE IN ROOT OF 24" ELM. 44' LE OF STA. 1014+31 ELEV. 443.30
 B.M. 123 SPIKE IN ROOT OF 18" ELM. 18.5' LE OF STA. 1020+11 ELEV. 472.35

SERIES F. No 80-L
 SHEET 51 OF 141