

WOOD GUARD RAIL REQUIRED

Culvert Station	LT	RT
518+05	24	24

QUICK POSTS REQUIRED

Culvert Station	LT	RT
513+20	1	1
523+60	-	-

NEW REINFORCED CONCRETE PILES (EXISTING PILES)

STA	DIA	LENG	CONC	STEEL	GRADES
915+20	18	66'	1.75	1	
918+05	18	60	1.75	1	
918+05 + 30 FT. IS		60			
920+05 + 30 FT. IS		60			

FLYED LIFE CURBS REQUIRED

STA	LENG	DIA	CONC	STEEL	GRADES
913+20	10	18	1.75	1	

80-L 1931 95 14.1
 Bridge Project 80-D 1932 3D 16D

CABLE GUARD RAIL REQUIRED

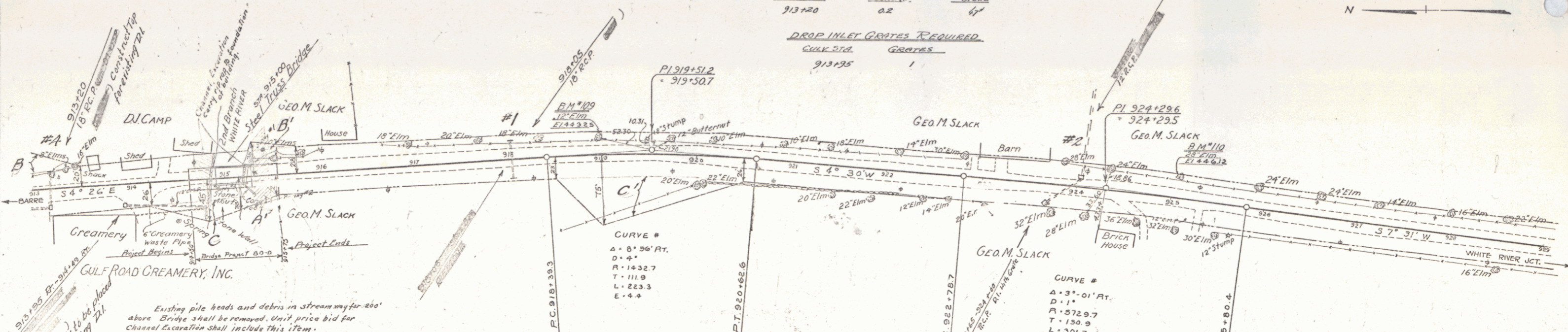
Sta	Le. 2	Le. 3	Le. 4	Le. 5
33+00	30	20	20	20
91+26	173	40	213	
91+26-96+99	173	40	213	

DROP INLET TOPS REQUIRED

CULVERT STA	CONC. R.	STEEL
913+20	02	4

DROP INLET GRATES REQUIRED

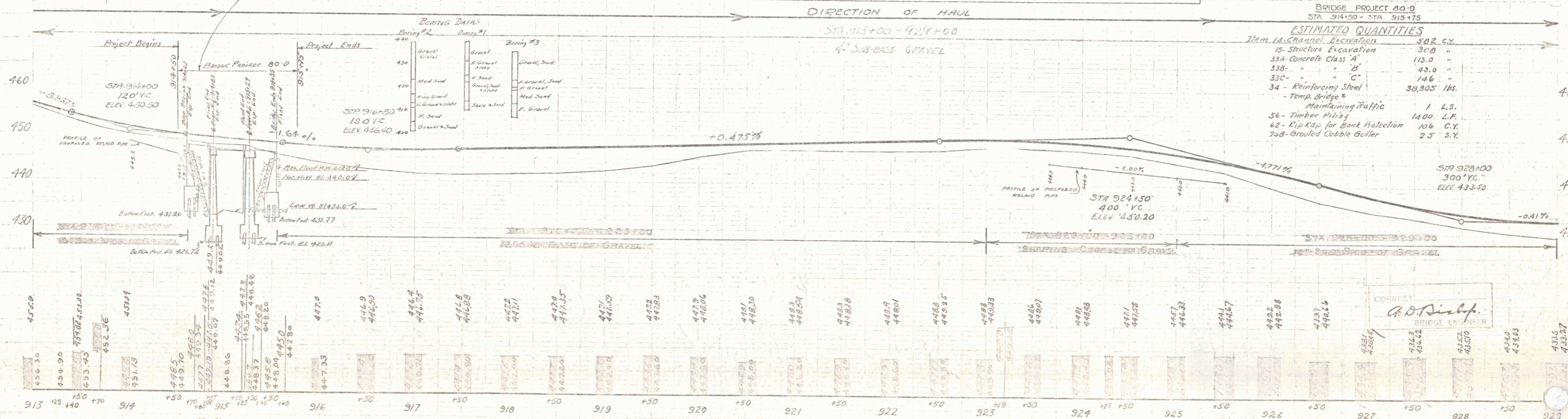
CULVERT STA	GRATES
913+95	1



Existing pile heads and debris in stream up to 200' above Bridge shall be removed. Unit price bid for Channel Excavation shall include this item.
 Note: Piles assumed to be 25' long for estimating purposes only.
 Gravel Sub-Base and Bituminous Surface not a part of this Project (80-D)

Any suitable Structure and Channel Excavation Parcel Kind of Date of Grantor Grantee Recorded Remarks shall be used as backfill and approach fill. Any excess material shall be disposed of as directed by the Engineer.

Parcel	Kind of	Date of	Grantor	Grantee	Recorded	Remarks
	Instrument	Instrument			Date	
B.C.C. #4	G.C.D.	11-9-31	D.I. H.C. Camp	St. of H.	30	283-A 2-3-32
P.B.C. #117	"	11-12-31	Gen. M. H. S. S. S.	"	50	283-B 2-3-32



B.M. No. 109 SPIKE IN ROOT OF 12" ELM. 135' LT. STA. 918+98 ELEV. 443.25
 B.M. No. 110 SPIKE IN ROOT OF 28" ELM. 19' LT. STA. 925+03 ELEV. 446.12

CORRECT
 A.D. Riehl
 BRIDGE ENGINEER

Series No. 80-L
 Sheet 1 of 14.1
 3D of 16D